



Marywood

UNIVERSITY



FACT BOOK 2011-2012

Office of Planning and Institutional Research



Mission Statement

A Catholic university sponsored by the Congregation of the Sisters, Servants of the Immaculate Heart of Mary, Marywood University roots itself in the principle of justice and a belief that education empowers people. Enacting its ideals, Marywood offers students a welcoming and supportive community that encourages men and women of all backgrounds to shape their lives as leaders in service to others. Proud of its liberal arts tradition and host of professional disciplines, Marywood challenges students to broaden their understanding of global issues and to make decisions based on spiritual, ethical, and religious values. Marywood calls upon students to seek their full potential and invites all to engage in a lifelong process of learning. Witnessing the efficacy of teaching and scholarship, Marywood educates students to live responsibly in a diverse and interdependent world.

MEMORANDUM

TO: Marywood University Colleagues

FROM: Dr. Ellen Boylan
Director of Institutional Research and Assessment

RE: *Fact Book 2011-2012*

DATE: December 2011

The Marywood University *Fact Book 2011-2012*, seventeenth edition, presents concise tables of data counts and trends on students, personnel, finances and facilities. Input is submitted by many campus departments and units and then assembled and published by the Office of Planning and Institutional Research. Sincere thanks to our campus colleagues for their assistance.

Reflected in this *Fact Book* are data on important recent activity:

- See the updates from Land and Building Inventory about the South Campus
- The Off-Campus Degree Program has been closed
- Where reported, race/ethnicity data reflect new required IPEDS categorizations

Footnotes on selected pages clarify important institutional changes.

The *Fact Book* is available for downloading and printing. For access, sign in to the MarywoodYou portal and click on the Documents tab. Find the Document Type: University, choose the Section: General, and the Factbook will appear in the documents listed. It is also available to the general public. Go to <http://www.marywood.edu/instresearch>, the Marywood University Office of Planning and Institutional Research web page.

We welcome your comments and suggestions for producing a *Fact Book* with the most timely and useful information possible for the entire campus. The contact person in the Office of Planning and Institutional Research for questions and comments on the *Fact Book 2011-2012* is Ms. Charlotte Woodward, Assistant Director of Institutional Research, who can be reached at woodward@marywood.edu or 570-348-6203.

/ld

TABLE OF CONTENTS

I STUDENTS

A.	Synopsis of Baccalaureate Degree Programs and Majors	1
B.	Synopsis of Graduate Degree Programs	3
C.	Degrees Granted by College and Department	5
D.	Admissions Activity	
1.	Undergraduate.....	9
♦	<i>Trends in Undergraduate Admissions Activity</i>	9
2.	Graduate.....	10
♦	<i>Graduate Admissions Funnel by College</i>	10
E.	Average SAT Scores for First-time Full-time Freshmen.....	11
♦	<i>Trends in SAT Scores of First-time Full-time Freshmen</i>	11
F.	Fall Headcount and FTE Enrollment by College and Time Status.....	12
G.	Fall Headcount Enrollment by College and Race/Ethnicity	16
♦	<i>Trends in Total Undergraduate Enrollment</i>	18
♦	<i>Trends in Total Graduate Enrollment</i>	18
H.	Fall Headcount Enrollment by College, Department and Level.....	19
I.	Fall Headcount Enrollment by College and Gender	21
J.	Fall Undergraduate Enrollment by On/Off-Campus Living.....	23
K.	Students with Disabilities	23
L.	Study Abroad Program - Location and Majors of Students.....	23
M.	International Student Enrollment	
1.	By Country.....	24
2.	By Major	24
N.	Honors Program	
1.	Majors Represented in Honors Program.....	25
2.	Honors Courses Offered	25
O.	Retention and Graduation Rates	
♦	<i>Trends in 6-year Graduation Rates of First-time Full-time Freshmen</i>	26
♦	<i>Trends in Freshman Class 1-Year Retention and 6-year Graduation</i>	27
P.	Athletics and Recreation	28

II PERSONNEL

A.	Employees by Ethnicity, EEO Category and Time Status.....	29
B.	Full-time Employees by Gender and Ethnicity.....	30
C.	Faculty	
1.	Number of Full-time and Pro-rata Faculty by College	31
2.	Tenure Status Among Full-time Faculty.....	31
3.	Number of Full-time Faculty by Rank and Gender	32
4.	Number of Full-time Faculty with Terminal Degrees	32

IV	FINANCES	
	A.	Unrestricted Operating Revenues 33
	B.	Percent Distribution of Unrestricted Operating Revenues..... 34
	C.	Unrestricted Operating Expenditures..... 35
	D.	Percent Distribution of Unrestricted Operating Expenditures 35
	E.	Externally Sponsored Research as a Percentage of Unrestricted Operating Expenditures 36
	F.	Endowment, Quasi-Endowment and Other Long-Term Investments..... 36
	G.	Tuition, Fees and Room & Board Charges..... 37
	H.	Total Cost at Marywood and AICUP Peer Institutions 38
		♦ <i>Tuition and Fees: AICUP Comparison Group Average v. Marywood</i> 39
	I.	Student Financial Aid 39
	J.	Total Gifts and Grants..... 40
	K.	Corporate/Foundation Relations Office Activity 40
	L.	Alumni Giving 40
	M.	Office of Research and Sponsored Programs 40
	N.	Comparison of Gift Levels by Campaign Year 41
		♦ <i>Total Presidential Society Giving</i> 41
V	FACILITIES	
	A.	Land and Building Inventory 42
	B.	University Library..... 43
	C.	Office of Information Technology..... 44
VI	ACCREDITATIONS 46
VII	STRATEGIC PLAN 2010-2015 GOALS AND OBJECTIVES 47

I. STUDENTS

Synopsis of Baccalaureate Degree Programs and Majors

(Total 59)

BA Advertising and Public Relations	BA History/Political Science (Pre-law)
BA Art Education	BA History-Social Science/ Secondary Education
BA Art Therapy	BA Musical Theatre
BA Arts Administration (Art)	BA Philosophy
BA Arts Administration (Corporate)	BA Religious Studies
BA Arts Administration (Music)	BA Spanish
BA Arts Administration (Theatre)	BA Spanish/Secondary Education
BA Broadcast Journalism	BA Theatre
BA Communication Arts/Secondary Education (Nonprint Media)	BArch Architecture
BA Communication Arts/Secondary Education (Theatre)	BBA Accounting
BA Comprehensive Social Sciences (General)	BBA Aviation Management (Airport/Airline Management)
BA Comprehensive Social Sciences (Sociology)	BBA Aviation Management (Professional Pilot/Flight Operations)
BA Criminal Justice	BBA Business Information Technology
BA Digital Media and Broadcast Production (Broadcast)	BBA Financial Planning
BA Digital Media and Broadcast Production (Corporate)	BBA Hospitality Management
BA English	BBA International Business
BA English/Secondary Education	BBA Management
BA French	BBA Marketing
BA French/Secondary Education	BBA Retail Business Management
BA Health Services Administration (General)	BEDA Environmental Design - Architecture
BA Health Services Administration (Gerontology)	BFA Design (Graphic Design)
BA History	BFA Design (Interior Architecture/Design)
BA History/Political Science	BFA Design (Photography)
	BFA Studio Art (Ceramics)
	BFA Studio Art (Illustration)
	BFA Studio Art (Painting)
	BFA Studio Art (Sculpture)

Synopsis of Baccalaureate Degree Programs and Majors

(Continued)

BM	Music Education	BS	General Science/Secondary Education
BM	Music Performance	BS	Health and Physical Education (Education)
BM	Music Therapy	BS	Health and Physical Education (Physical Activity)
BS	Athletic Training	BS	Health Sciences
BS	Biology	BS	Mathematics
BS	Biology (Pre-Chiropractic)	BS	Mathematics/Secondary Education
BS	Biology (Pre-Professional)	BS	Medical Laboratory Science
BS	Biology/Secondary Education	BS	Nutrition and Dietetics
BS	Biotechnology	BS	Psychology
BS	Communication Sciences and Disorders (Deaf Studies)	BS	Psychology (Clinical Practices)
BS	Communication Sciences and Disorders (Pre-Professional)	BS	Psychology (Industrial/Organizational)
BS	Early Childhood Education	BS	Special Education
BS	Elementary Education	BSN	Nursing – Pre-Service
BS	Environmental Science	BSN	Nursing – RN
BS	Family and Consumer Science Education	BSW	Social Work

Total Undergraduate Major Programs: 59

Synopsis of Graduate Degree Programs

(Total 36 Masters, 1 Educational Specialist, 2 Doctoral)

MA	Art Education	MFA	Visual Arts (Advertising Design)
MA	Art Therapy	MFA	Visual Arts (Clay)
MA	Communication Arts (Interdisciplinary)	MFA	Visual Arts (Graphic Design)
MA	Communication Arts (Media Management)	MFA	Visual Arts (Illustration)
MA	Communication Arts (Production)	MFA	Visual Arts (Painting)
MA	Mental Health Counseling (General)	MFA	Visual Arts (Photography)
MA	Music Education	MFA	Visual Arts (Printmaking)
MA	Psychology (Clinical Services)	MHSA	Health Services Administration
MA	Psychology (General Theoretical)	MMT	Music Therapy
MA	Studio Art (Advertising Design)	MPA	Public Administration
MA	Studio Art (Ceramics)	MS	Biotechnology
MA	Studio Art (Clay)	MS	Clinical Physician Assistant
MA	Studio Art (Graphic Design)	MS	Counselor Education-Elementary
MA	Studio Art (Illustration)	MS	Counselor Education-Secondary
MA	Studio Art (Interior Architecture)	MS	Criminal Justice
MA	Studio Art (Painting)	MS	Early Childhood Intervention
MA	Studio Art (Photography)	MS	Financial Information Systems
MA	Studio Art (Printmaking)	MS	Gerontology
MA	Studio Art (Sculpture)	MS	Higher Education Administration
MA	Studio Art (Weaving)	MS	Information Sciences (Library Science/Information Specialist)
MArch	Architecture	MS	Management Information Systems
MAT	Elementary Education	MS	Nutrition
MAT	Secondary/K-12 Education	MS	Physician Assistant Studies
MBA	Business Administration (Finance and Investments)	MS	Reading Education
MBA	Business Administration (General Management)	MS	School Leadership
MBA	Business Administration (Management Information Systems)	MS	Special Education
MEd	Instructional Leadership	MS	Special Education Administration and Supervision
		MS	Speech-Language Pathology

Synopsis of Graduate Degree Programs

(Continued)

MS	Sports Nutrition and Exercise Science	PhD	Human Development (Higher Education Administration)
MSW	Social Work		
EdS	School Psychology	PhD	Human Development (Instructional Leadership)
PhD	Human Development (Educational Administration)	PhD	Human Development (Social Work)
PhD	Human Development (Health Promotion)	PsyD	Clinical Psychology

Total Masters Degree Programs: 36
Educational Specialist Degrees: 1
Total Doctoral Degrees: 2, with 5 PhD tracks

**Degrees Granted by College and Department
July 1, 2006 to June 30, 2011**

School of Architecture

		<u>2006-07</u>	<u>2007-08</u>	<u>2008-09</u>	<u>2009-10</u>	<u>2010-11</u>
Architecture						
	B.F.A.					13
	M.A.					7
Total Bachelors						13
Total Masters						7

Insalaco College of Creative and Performing Arts

		<u>2006-07</u>	<u>2007-08</u>	<u>2008-09</u>	<u>2009-10</u>	<u>2010-11</u>
Art						
	B.A.	19	20	20	22	24
	B.F.A.	54	34	62	39	51
	M.A.	15	22	19	11	12
	M.F.A.	11	20	16	16	19
Communication Arts						
	B.A.	24	20	13	22	12
	M.A.	8	14	11	8	16
	M.S.	8	12	3	8	0
Music & Theatre						
	B.A.	1	3	4	7	8
	B.M.	11	16	9	9	10
	M.A.	5	1	3	4	0
Ad Hoc						
	B.A.	1	0	0	0	0
	M.A.	0	0	7	0	0
Total Bachelors		110	93	108	99	105
Total Masters		47	69	59	47	47

Degrees Granted by College and Department
July 1, 2006 to June 30, 2011
 (continued)

Reap College of Education and Human Development

	<u>2006-07</u>	<u>2007-08</u>	<u>2008-09</u>	<u>2009-10</u>	<u>2010-11</u>
Communication Science and Disorders					
B.S.	14	7	14	16	21
M.S.	12	23	18	21	15
Counseling/Psychology					
B.S.	26	24	28	27	30
M.A.	29	27	32	37	28
M.S.	15	12	7	18	11
Ed.S.	6	7	9	4	2
Psy.D.	1	6	7	11	10
Education					
B.S.	26	31	20	32	35
M.A.T.	17	11	12	28	19
M.Ed.	0	1	2	3	5
M.S.	14	14	22	12	20
Human Development					
Ph.D.	16	8	10	10	14
Special Education					
B.S.	5	8	13	6	3
M.S.	19	11	9	10	12
Total Bachelors	71	70	75	81	89
Total Masters	106	99	102	129	110
Total Educational Specialist	6	7	9	4	2
Total Doctoral	17	14	17	21	24

Degrees Granted by College and Department
July 1, 2006 to June 30, 2011
 (continued)

College of Health and Human Services

	<u>2006-07</u>	<u>2007-08</u>	<u>2008-09</u>	<u>2009-10</u>	<u>2010-11</u>
Health and Physical Education					
B.S.	18	17	15	16	25
M.S.	0	0	4	4	1
Nursing/Public Administration					
B.A.	1	0	2	3	2
B.S.	0	0	0	0	1
B.S.N.	25	33	27	23	23
M.H.S.A.	4	5	6	4	9
M.P.A.	8	6	9	6	2
M.S.	3	3	7	8	0
Nutrition and Dietetics					
B.S.	20	21	23	22	32
M.S.	9	3	14	10	7
Physician Assistant					
B.S.	9	8	10	15	0
M.S.	29	29	27	28	29
Social Work					
B.S.W.	10	13	6	10	12
M.P.A.					7
M.S.					2
M.S.W.	104	118	125	117	113
Total Bachelors	83	92	83	89	95
Total Masters	157	164	192	177	170

Degrees Granted by College and Department
July 1, 2006 to June 30, 2011
 (continued)

College of Liberal Arts and Sciences

	<u>2006-07</u>	<u>2007-08</u>	<u>2008-09</u>	<u>2009-10</u>	<u>2010-11</u>
Business and Managerial Science					
B.A.	0	0	0	1	0
B.B.A.	33	40	53	54	68
B.S.	0	1	0	0	0
M.B.A.	11	15	18	13	22
M.S.	0	0	0	0	0
English					
B.A.	27	20	23	19	13
Foreign Languages					
B.A.	4	5	5	2	4
Mathematics					
B.S.	1	1	4	4	5
Philosophy					
B.A.	0	0	0	0	1
Religious Studies					
B.A.	0	1	2	0	2
Science					
B (Pre PA)	0	0	1	0	0
B.S.	23	10	21	29	50
M.S.	0	7	6	11	8
Social Sciences					
B.A.	24	22	25	25	32
M.S.	3	10	3	11	7
Ad Hoc					
B.A.	0	0	0	0	1
Total Bachelors	112	100	134	135	176
Total Masters	14	32	27	33	37

University Overall

	<u>2006-07</u>	<u>2007-08</u>	<u>2008-09</u>	<u>2009-10</u>	<u>2010-11</u>
Total Bachelors Awarded	376	355	400	418	478
Total Masters Awarded	324	364	380	388	371
Total Educational Specialist Awarded	6	7	9	4	2
Total Doctoral Awarded	17	14	17	21	23
Total All Degrees Awarded	723	740	806	831	874

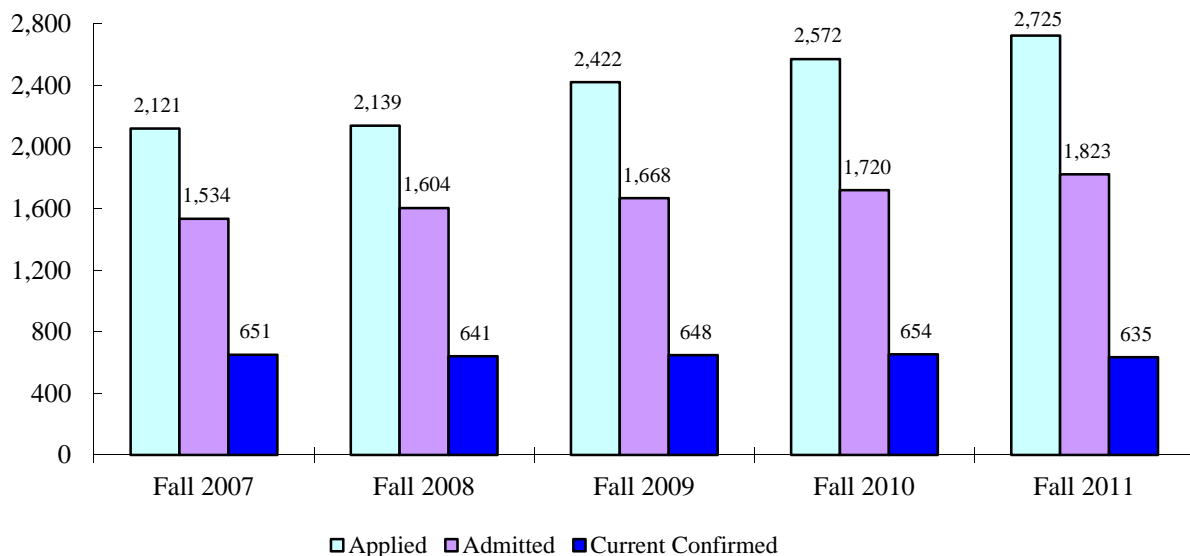
Admissions Activity

Undergraduate

Fall Full- and Part-time New Students

	2007	2008	2009	2010	2011	2007-11 % change
Applied	2,121	2,139	2,422	2,572	2,725	28.5
Freshman	1,756	1,774	1,923	2,062	2,203	25.5
Transfer	356	356	481	492	508	42.7
Other	9	9	18	18	14	55.6
Offered Admission	1,534	1,604	1,668	1,720	1,823	18.8
Freshman	1,289	1,377	1,392	1,455	1,543	19.7
Transfer	241	222	261	257	272	12.9
Other	4	5	15	8	8	100.0
Offer Rate	72.3%	75.0%	68.9%	66.9%	66.9%	
Freshman	73.4%	77.6%	72.3%	70.6%	70.0%	
Transfer	67.7%	62.4%	54.3%	52.2%	53.5%	
Other	44.4%	55.6%	83.3%	44.4%	57.1%	
Current Confirmed	651	641	648	654	635	-2.5
Freshman	478	487	473	507	466	-2.5
Transfer	169	150	162	144	164	-3.0
Other	4	4	13	3	5	25.0
Yield Rate	42.4%	40.0%	38.8%	38.0%	34.8%	
Freshman	37.1%	35.4%	34.0%	34.8%	30.2%	
Transfer	70.1%	67.6%	62.1%	56.0%	60.3%	
Other	100.0%	80.0%	86.7%	37.5%	62.5%	

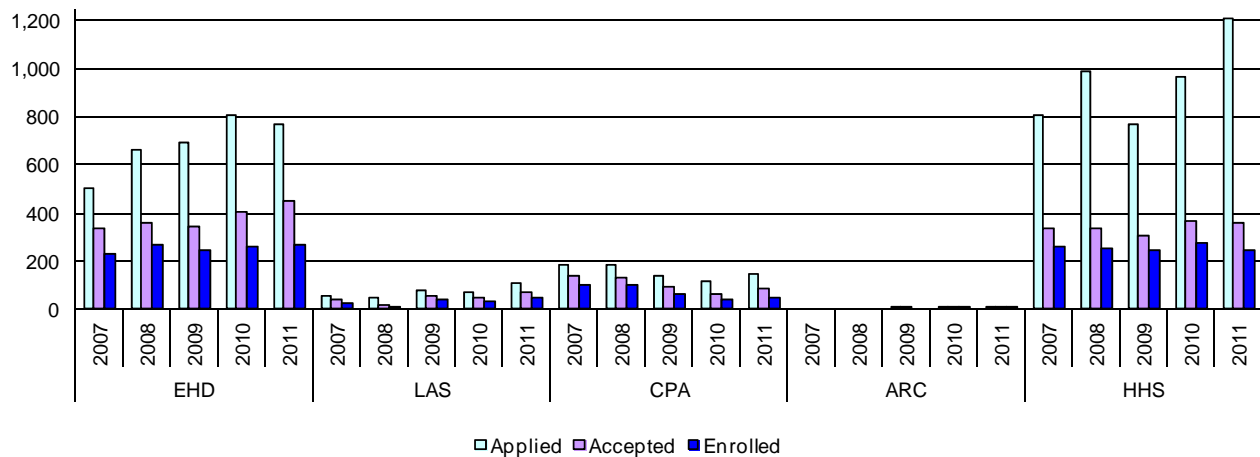
Trends in Undergraduate Admissions Activity Fall 2007 to Fall 2011



Admissions Activity (continued)
Graduate
Full- and Part-time New Students (by calendar year)

	2007	2008	2009	2010	2011	
CPA¹						
Applied	188	183	140	117	150	
Accepted	137	135	91	65	86	
Enrolled	100	99	65	45	46	
EHD						
Applied	506	660	693	809	768	
Accepted	337	357	343	409	449	
Enrolled	231	269	245	264	266	
HHS						
Applied	811	993	767	964	1,206	
Accepted	334	338	310	366	357	
Enrolled	259	257	250	280	250	
LAS²						
Applied	57	47	82	71	112	
Accepted	42	19	53	48	75	
Enrolled	28	14	40	35	48	
ARC³						
Applied			4	13	12	
Accepted			2	9	9	
Enrolled			0	9	8	
TOTAL						2007-11 % change
Applied	1,562	1,883	1,686	1,974	2,248	43.9
Accepted	850	849	799	897	976	14.8
Enrolled	618	639	600	633	618	0.0

**Graduate Admissions Funnel by College/School
2007 - 2011**



¹ As of July 1, 2009, the Business Department was moved from CAM to LAS and CAM was renamed CPA. The School of Architecture (ARC) was opened and the BFA Design (Interior Design) and MA Studio Art (Interior Architecture) programs were moved from the Art Department in CAM to ARC.

² As of July 1, 2009, the Business Department was moved from CAM to LAS.

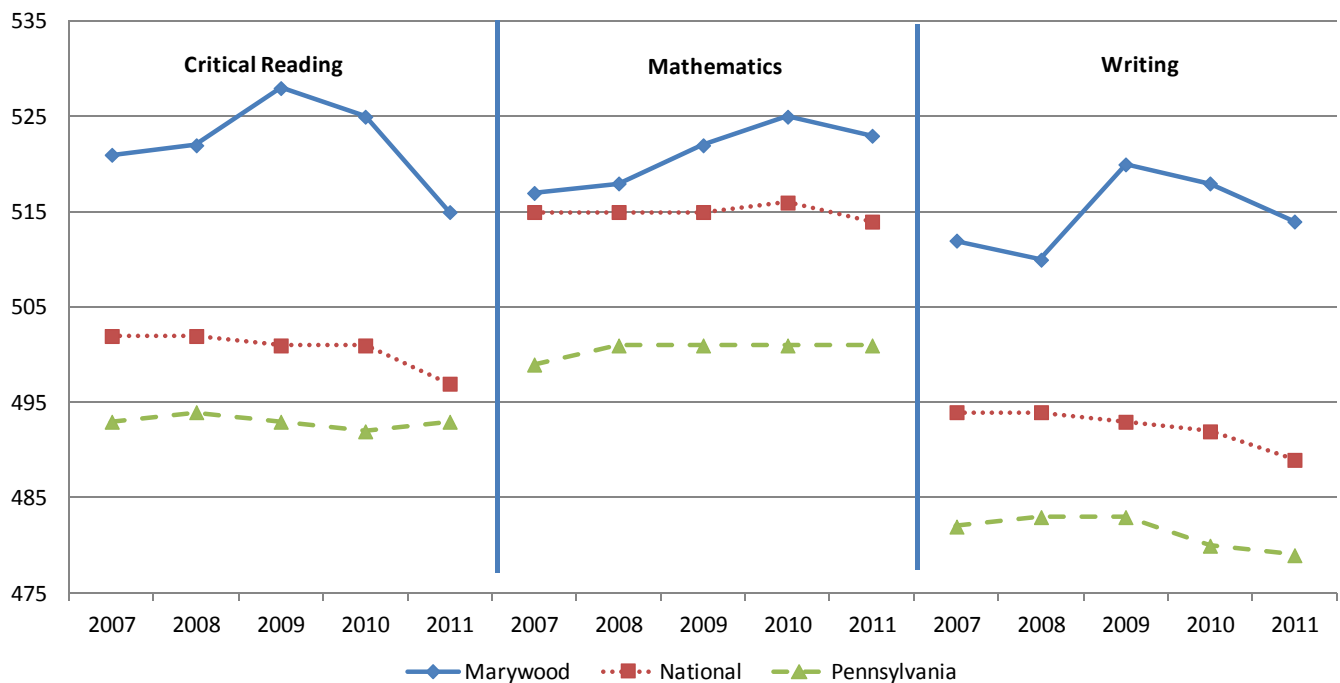
³ As of July 1, 2009, the School of Architecture (ARC) was opened and the BFA Design (Interior Design) and MA Studio Art (Interior Architecture) programs were moved from the Art Department in CAM to ARC.

Average SAT Scores for First-time Full-time Freshmen

	Critical Reading*	Math	Reading + Math	Writing
Fall '05	527	521	1049	
Fall '06	513	514	1027	
Fall '07	521	517	1038	512
Fall '08	522	518	1039	510
Fall '09	528	522	1050	520
Fall '10	525	525	1050	518
Fall '11	515	523	1038	514

* Prior to Fall 2007, old SAT Verbal score

Trends in SAT Scores of First-time Full-time Students



Fall Headcount and FTE* Enrollment by College and Time Status

Insalaco College of Creative and Performing Arts⁴

	2007	2008	2009	2010	2011
Undergraduate					
FT	406	430	430	438	396
PT	<u>21</u>	<u>25</u>	<u>16</u>	<u>25</u>	<u>11</u>
Total	427	455	446	463	407
FTE – Internal	413.9	440.0	435.9	447.8	400.1
FTE – IPEDS	413.0	438.3	435.3	446.3	399.7
Graduate					
FT	58	61	62	68	49
PT	<u>101</u>	<u>97</u>	<u>96</u>	<u>71</u>	<u>68</u>
Total	159	168	158	139	117
FTE – Internal	95.1	98.2	98.5	95.6	72.7
FTE – IPEDS	91.7	93.3	94.0	91.7	71.7
Total					
FT	464	491	492	506	445
PT	<u>122</u>	<u>122</u>	<u>112</u>	<u>96</u>	<u>79</u>
Total	586	613	604	602	524
FTE – Internal	509.0	538.2	534.4	543.4	472.8
FTE – IPEDS	504.7	531.7	529.3	538.0	471.3

Reap College of Education and Human Development

	2007	2008	2009	2010	2011
Undergraduate					
FT	360	370	381	382	363
PT	<u>14</u>	<u>5</u>	<u>7</u>	<u>9</u>	<u>11</u>
Total	374	375	388	391	374
FTE – Internal	365.7	372.0	383.5	385.3	367.5
FTE – IPEDS	364.7	371.7	383.3	385.0	366.7
Graduate					
FT	180	199	172	196	200
PT	<u>346</u>	<u>342</u>	<u>370</u>	<u>283</u>	<u>256</u>
Total	526	541	542	479	456
FTE – Internal	303.1	321.6	306.2	300.8	291.0
FTE – IPEDS	295.3	313.0	295.3	290.3	285.3
Total					
FT	540	569	553	578	563
PT	<u>360</u>	<u>347</u>	<u>377</u>	<u>292</u>	<u>267</u>
Total	900	916	930	870	830
FTE – Internal	668.8	693.6	689.7	686.1	658.6
FTE – IPEDS	660.0	684.7	678.7	675.3	652.0

* FTE Internal = FT headcount + (PT credits/15 for undergraduate or PT credits/12 for graduate)

FTE IPEDS = FT headcount + PT headcount/3

⁴ As of July 1, 2009, the Business Department was moved from CAM to LAS and CAM was renamed CPA. The School of Architecture (ARC) was opened and the BFA Design (Interior Design) and MA Studio Art (Interior Architecture) programs were moved from the Art Department in CAM to ARC.

Fall Headcount and FTE* Enrollment by College and Time Status

(continued)

College of Health and Human Services

	<u>2007</u>	<u>2008</u>	<u>2009</u>	<u>2010</u>	<u>2011</u>
Undergraduate					
FT	350	357	361	402	412
PT	<u>17</u>	<u>17</u>	<u>21</u>	<u>17</u>	<u>18</u>
Total	367	374	382	419	430
FTE – Internal	357.6	364.5	369.8	411.5	420.5
FTE – IPEDS	355.7	362.7	368.0	407.7	418.0
Graduate					
FT	276	277	278	316	288
PT	<u>245</u>	<u>246</u>	<u>224</u>	<u>190</u>	<u>193</u>
Total	521	523	502	506	481
FTE – Internal	383.3	385.2	379.3	397.8	376.5
FTE – IPEDS	357.7	359.0	352.7	379.3	352.3
Total					
FT	626	634	639	718	700
PT	<u>262</u>	<u>263</u>	<u>245</u>	<u>207</u>	<u>211</u>
Total	888	897	884	925	911
FTE – Internal	740.9	749.7	749.1	809.3	797.1
FTE – IPEDS	713.3	721.7	720.7	787.0	770.3

College of Liberal Arts and Sciences⁵

	<u>2007</u>	<u>2008</u>	<u>2009</u>	<u>2010</u>	<u>2011</u>
Undergraduate					
FT	670	714	766	731	748
PT	<u>62</u>	<u>58</u>	<u>52</u>	<u>55</u>	<u>44</u>
Total	732	772	818	786	792
FTE – Internal	696.1	736.6	785.3	751.4	763.9
FTE – IPEDS	690.7	733.3	783.3	749.3	762.7
Graduate					
FT	22	19	26	30	37
PT	<u>74</u>	<u>56</u>	<u>57</u>	<u>51</u>	<u>43</u>
Total	96	75	83	81	80
FTE – Internal	51.8	40.3	47.7	50.3	53.9
FTE – IPEDS	46.7	22.2	45.0	47.0	51.3
Total					
FT	692	733	792	761	785
PT	<u>136</u>	<u>114</u>	<u>109</u>	<u>106</u>	<u>87</u>
Total	828	847	901	867	872
FTE	747.9	776.9	833.0	801.7	817.8
FTE – IPEDS	737.3	771.0	828.3	796.3	814.0

* FTE Internal = FT headcount + (PT credits/15 for undergraduate or PT credits/12 for graduate)

FTE IPEDS = FT headcount + PT headcount/3

⁵ As of July 1, 2009, the Business Department was moved from CAM to LAS and CAM was renamed CPA.

Fall Headcount and FTE* Enrollment by College and Time Status
(continued)

School of Architecture⁶

	2007	2008	2009	2010	2011
Undergraduate					
FT	49	60	112	146	187
PT	<u>1</u>	<u>3</u>	<u>4</u>	<u>1</u>	<u>2</u>
Total	50	63	116	147	189
FTE – Internal	49.4		113.0	146.6	189.0
FTE – IPEDS	49.3	61.0	113.3	146.3	189.0
Graduate					
FT	1	1	0	6	8
PT	<u>11</u>	<u>9</u>	<u>2</u>	<u>1</u>	<u>1</u>
Total	12	10	2	7	9
FTE – Internal	6.5		1.0	6.5	8.5
FTE – IPEDS	4.7	4.0	0.67	6.3	8.3
Total					
FT	50	61	112	152	195
PT	<u>12</u>	<u>12</u>	<u>6</u>	<u>2</u>	<u>3</u>
Total	62	73	118	154	198
FTE – Internal	55.9	66.7	114.0	153.1	197.5
FTE – IPEDS	54.0	65.0	114.0	152.7	197.3

Registrar

	2007	2008	2009	2010	2011
Undergraduate					
FT	3	0	3	7	2
PT	<u>49</u>	<u>32</u>	<u>31</u>	<u>54</u>	<u>61</u>
Total	52	32	34	61	63
FTE – Internal	11.3	4.33	9.1	17.9	12.4
FTE – IPEDS	19.3	10.7	13.3	25.0	22.3

* FTE Internal = FT headcount + (PT credits/15 for undergraduate or PT credits/12 for graduate)

FTE IPEDS = FT headcount + PT headcount/3

⁶ As of July 1, 2009, the School of Architecture (ARC) was opened and the BFA Design (Interior Design) and MA Studio Art (Interior Architecture) programs were moved from the Art Department in CAM to ARC.

Fall Headcount and FTE* Enrollment by College and Time Status
(continued)

Total University

	<u>2007</u>	<u>2008</u>	<u>2009</u>	<u>2010</u>	<u>2011</u>
Undergraduate					
FT	1,838	1,933	2,053	2,106	2,110
PT	<u>164</u>	<u>138</u>	<u>131</u>	<u>161</u>	<u>145</u>
Total	2,002	2,071	2,184	2,267	2,255
FTE – Internal	1,894.0	1,978.9	2,096.6	2,160.6	2,153.5
FTE – IPEDS	1,892.7	1,977.7	2,096.7	2,159.7	2,158.3
Graduate					
FT	537	557	538	616	582
PT	<u>777</u>	<u>750</u>	<u>749</u>	<u>596</u>	<u>561</u>
Total	1,314	1,307	1,287	1,212	1,143
FTE – Internal	839.7	850.5	832.7	850.1	802.7
FTE – IPEDS	796.0	807.0	787.7	814.7	769.0
Total					
FT	2,375	2,488	2,591	2,722	2,692
PT	<u>941</u>	<u>890</u>	<u>880</u>	<u>757</u>	<u>706</u>
Total	3,316	3,378	3,471	3,479	3,398
FTE – Internal	2,733.7	2,829.4	2,929.3	3,011.5	2,956.2
FTE – IPEDS	2,688.7	2,784.7	2,884.3	2,974.3	2,927.3

* FTE Internal = FT headcount + (PT credits/15 for undergraduate or PT credits/12 for graduate)
FTE IPEDS = FT headcount + (PT headcount/3)

Fall Headcount Enrollment by College and Ethnicity/Race⁷

	2007	2008	2009	2010	2011
Insalaco College of Creative and Performing Arts⁸					
Hispanic	21	15	18	20	18
White	485	512	501	510	431
Other/Unknown	72	77	82	69	68
Two or more					3
Non-resident Alien	8	9	3	3	4
Reap College of Education and Human Development					
Hispanic	11	14	16	18	14
White	779	786	809	768	719
Other/Unknown	102	109	101	77	84
Two or more					5
Non-resident Alien	8	7	4	7	8
College of Health and Human Services					
Hispanic	26	23	31	27	27
White	732	747	720	753	724
Other/Unknown	120	118	120	134	152
Two or more					3
Non-resident Alien	10	9	13	11	5
College of Liberal Arts and Sciences⁹					
Hispanic	22	29	28	34	38
White	660	681	750	743	708
Other/Unknown	133	124	110	77	114
Two or more					2
Non-resident Alien	13	13	13	13	10
School of Architecture					
Hispanic	3	3	5	5	11
White	52	61	99	131	163
Other/Unknown	6	8	14	18	23
Two or more					1
Non-resident Alien	1	1	0	0	0
Registrar					
Hispanic	0	0	0	1	1
White	7	10	6	24	24
Other/Unknown	32	11	22	20	23
Non-resident Alien	13	11	6	16	15

⁷ As of July 1, 2011, expanded IPEDS category, Race/Ethnicity, included "Two or more"

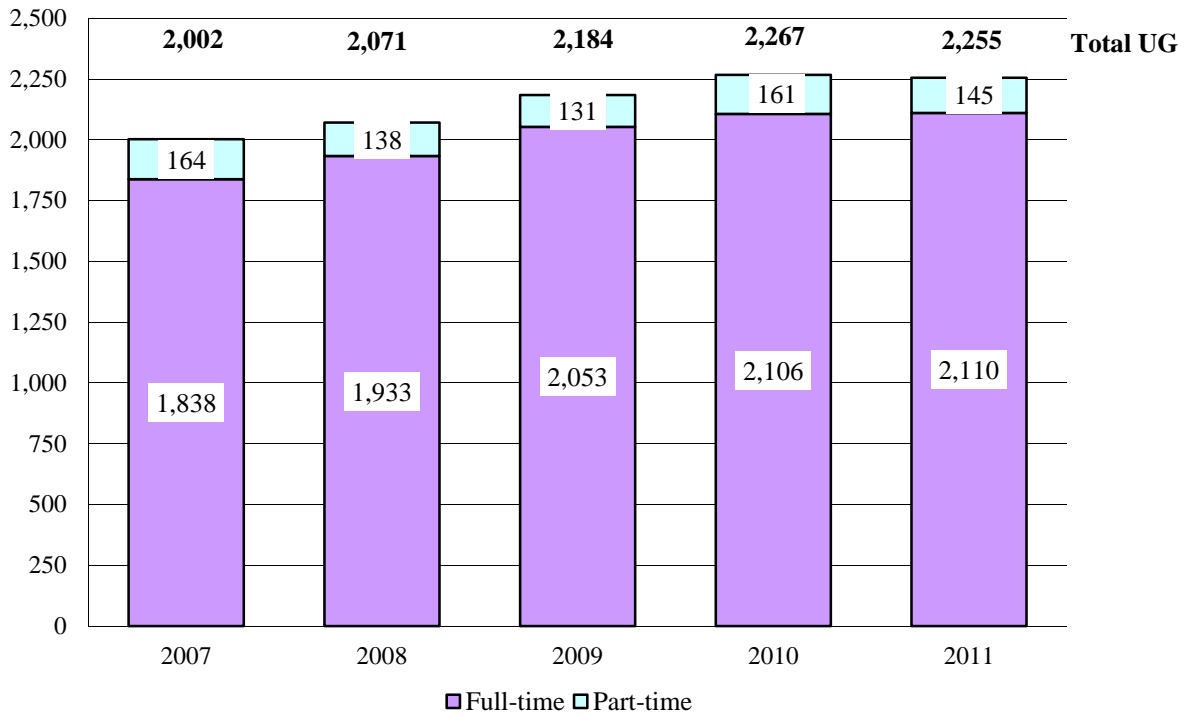
⁸ As of July 1, 2009, the Business Department was moved from CAM to LAS and CAM was renamed to CPA. The School of Architecture (ARC) was opened and the BFA Design (Interior Design) and MA Studio Art (Interior Architecture) programs were moved from the Art Department in CAM to ARC.

⁹ As of July 1, 2009, the Business Department was moved from CAM to LAS.

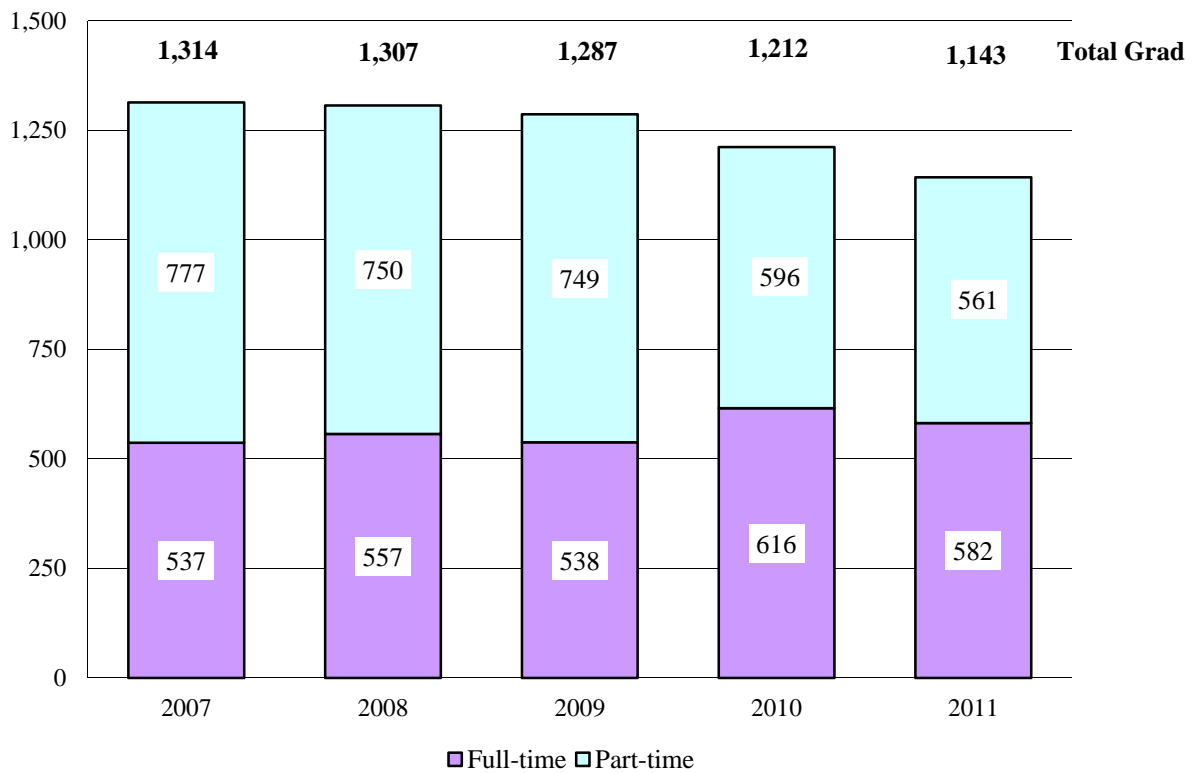
Fall Headcount Enrollment by College and Ethnicity/Race (continued)

	2007	2008	2009	2010	2011
TOTAL UNDERGRADUATE					
Hispanic	57	56	60	71	81
White	1,635	1,725	1,857	1,950	1,877
Other/Unknown	277	257	244	215	263
Two or more					8
Non-resident Alien	33	33	23	31	25
TOTAL GRADUATE					
Hispanic	26	28	38	34	28
White	1,080	1,072	1,028	979	892
Other/Unknown	188	190	205	180	200
Two or more					6
Non-resident Alien	20	17	16	19	17
TOTAL UNIVERSITY					
Hispanic	83	84	98	105	109
White	2,715	2,797	2,885	2,929	2,769
Other/Unknown	465	447	449	395	464
Two or more					14
Non-resident Alien	53	50	39	50	42

Trends in Total Undergraduate Enrollment Fall 2007 to Fall 2011



Trends in Total Graduate Enrollment Fall 2007 to Fall 2011



Headcount Enrollment by College, Department and Level – Fall 2007 to Fall 2011

		2007	2008	2009	2010	2011
Insalaco College of Creative and Performing Arts¹⁰						
Art ¹¹	Undergraduate	279	301	286	296	251
	Graduate	77	87	95	91	77
Communication Arts ¹²	Undergraduate	60	68	70	73	76
	Graduate	52	46	42	34	28
Music, Theatre & Dance ¹³	Undergraduate	85	86	90	91	76
	Graduate	12	14	11	8	5
Dean/Academic Advising ¹⁴	Undergraduate	3	0	0	3	4
	Graduate	18	11	10	6	7
Reap College of Education and Human Development						
Communication Disorders	Undergraduate	61	73	77	85	77
	Graduate	35	40	30	20	29
Counseling/Psychology	Undergraduate	115	118	117	121	126
	Graduate	170	168	168	163	168
Education	Undergraduate	127	123	139	142	125
	Graduate	162	187	177	155	128
Human Development	Graduate	90	93	99	87	76
Special Education	Undergraduate	30	23	13	7	25
	Graduate	33	33	35	40	41
Dean/Academic Advising	Undergraduate	41	38	42	36	21
	Graduate	36	20	33	14	14

¹⁰ As of July 1, 2009, the Business Department was moved from CAM to LAS and CAM was renamed CPA. The School of Architecture (ARC) was opened and the BFA Design (Interior Design) and MA Studio Art (Interior Architecture) programs were moved from the Art Department in CAM to ARC.

¹¹ As of July 1, 2009, the School of Architecture (ARC) was opened and the BFA Design (Interior Design) and MA Studio Art (Interior Architecture) programs were moved from the Art Department in CAM to ARC.

¹² As of July 1, 2009 the BA Theatre program was moved from the Communication Arts Department to the Music Department and the BA Musical Theatre program was moved from the Dean to the Department of Music, Theatre & Dance.

¹³ As of July 1, 2009, the BA Theatre program was moved from the Communication Arts Department to the Music, Theatre & Dance Department and the BA Musical Theatre program was moved from the Dean of CAM to the Department of Music, Theatre & Dance.

¹⁴ As of July 1, 2009, the BA Musical Theatre program was moved from the Dean of CAM to the Department of Music, Theatre & Dance.

Headcount by College, Department and Level – Fall 2007 to Fall 2011

(continued)

		2007	2008	2009	2010	2011
College of Health and Human Services						
Health & Physical Education	Undergraduate	93	99	105	112	116
	Graduate	0	8	5	4	2
Nursing ¹⁵	Undergraduate	116	113	104	109	115
	Graduate	12	13	7	3	2
Nutrition and Dietetics	Undergraduate	96	115	112	125	137
	Graduate	68	68	49	60	62
Physician Assistant	Undergraduate	8	0	0	0	0
	Graduate	44	43	45	51	54
School of Social Work and Administrative Studies ¹⁶	Undergraduate	48	45	52	61	59
	Graduate	366	367	371	372	341
Dean/Academic Advising	Undergraduate	6	2	9	12	3
	Graduate	31	24	25	16	20
College of Liberal Arts and Sciences¹⁷						
Business	Undergraduate	225	236	247	252	228
	Graduate	58	43	45	45	42
English	Undergraduate	78	85	68	57	59
Foreign Languages	Undergraduate	20	14	9	12	17
Mathematics	Undergraduate	25	31	26	25	25
Philosophy	Undergraduate	0	2	1	6	3
Religious Studies	Undergraduate	4	4	3	3	3
Science	Undergraduate	155	174	214	214	224
	Graduate	14	8	8	11	14
Social Science	Undergraduate	120	130	137	137	135
	Graduate	20	18	28	21	16
Dean/Academic Advising	Undergraduate	105	96	113	80	98
	Graduate	4	6	2	4	8
School of Architecture¹⁸						
	Undergraduate	50	63	116	147	189
	Graduate	12	10	2	7	9
Registrar						
	IEP	14	11	6	16	15
	Undergraduate	38	21	28	45	48

¹⁵ As of July 1, 2011, the MPA Public Administration program and the BA and MHSA Health Services Administration programs were moved from the Nursing department to the School of Social Work and Administrative Studies.

¹⁶ Ibid.

¹⁷ As of July 1, 2009, the Business Department was moved from CAM to LAS.

¹⁸ As of July 1, 2009, the School of Architecture (ARC) was opened and the BFA Design (Interior Design) and the MA Studio Art (Interior Architecture) programs were moved from the Art Department in CAM to ARC.

Headcount Enrollment by College and Gender

	2007	2008	2009	2010	2011	
					N	%
Insalaco College of Creative and Performing Arts¹⁹						
Undergraduate						
Women	302	327	321	340	301	74.0
Men	<u>125</u>	<u>128</u>	<u>125</u>	<u>123</u>	<u>106</u>	26.0
Total	427	455	446	463	407	
Graduate						
Women	118	112	112	102	79	67.5
Men	<u>41</u>	<u>46</u>	<u>46</u>	<u>37</u>	<u>38</u>	32.5
Total	159	158	158	139	117	
Reap College of Education and Human Development						
Undergraduate						
Women	324	321	345	354	339	90.6
Men	<u>50</u>	<u>54</u>	<u>43</u>	<u>37</u>	<u>35</u>	9.4
Total	374	375	388	391	374	
Graduate						
Women	426	429	446	386	354	77.6
Men	<u>100</u>	<u>112</u>	<u>96</u>	<u>93</u>	<u>102</u>	22.4
Total	526	541	542	479	456	
College of Health and Human Services						
Undergraduate						
Women	291	286	294	323	323	75.1
Men	<u>76</u>	<u>88</u>	<u>88</u>	<u>96</u>	<u>107</u>	24.9
Total	367	374	382	419	430	
Graduate						
Women	439	435	422	419	410	85.2
Men	<u>82</u>	<u>88</u>	<u>80</u>	<u>87</u>	<u>71</u>	14.8
Total	521	523	502	506	481	
College of Liberal Arts and Sciences²⁰						
Undergraduate						
Women	420	435	460	437	456	57.6
Men	<u>312</u>	<u>337</u>	<u>358</u>	<u>349</u>	<u>336</u>	42.4
Total	732	772	818	786	792	
Graduate						
Women	63	37	41	46	44	55.0
Men	<u>33</u>	<u>38</u>	<u>42</u>	<u>35</u>	<u>36</u>	45.0
Total	96	75	83	81	80	

(continued)

¹⁹ As of July 1, 2009, the Business Department was moved from CAM to LAS and CAM was renamed CPA. The School of Architecture (ARC) was opened and the BFA Design (Interior Design) and MA Studio Art (Interior Architecture) programs were moved from the Art Department in CAM to ARC.

²⁰ As of July 1, 2009, the Business Department was moved from CAM to LAS.

Headcount Enrollment by College and Gender

(continued)

	2007	2008	2009	2010	2011	
					N	%
School of Architecture²¹						
Undergraduate						
Women	49	58	76	85	106	56.1
Men	<u>1</u>	<u>5</u>	<u>40</u>	<u>62</u>	<u>83</u>	43.9
Total	50	63	116	147	189	
Graduate						
Women	9	9	2	7	8	88.9
Men	<u>3</u>	<u>1</u>	<u>0</u>	<u>0</u>	<u>1</u>	11.1
Total	12	10	2	7	9	
Registrar						
Undergraduate						
Women	38	22	23	42	33	52.4
Men	<u>14</u>	<u>10</u>	<u>11</u>	<u>19</u>	<u>30</u>	47.6
Total	52	32	34	61	63	
Total University						
Undergraduate						
Women	1,424	1,449	1,519	1,581	1,558	69.1
Men	<u>578</u>	<u>622</u>	<u>665</u>	<u>686</u>	<u>697</u>	30.9
Total	2,002	2,071	2,184	2,267	2,255	
Graduate						
Women	1,055	1,022	1,023	960	895	78.3
Men	<u>259</u>	<u>285</u>	<u>264</u>	<u>252</u>	<u>248</u>	21.7
Total	1,314	1,307	1,287	1,212	1,143	

²¹ As of July 1, 2009, the School of Architecture (ARC) was opened and the BFA Design (Interior Design) and MA Studio Art (Interior Architecture) programs were moved from the Art Department in CAM to ARC.

Fall Full-time Undergraduate Enrollment by On/Off-Campus Living

		Fall 2007	Fall 2008	Fall 2009	Fall 2010	Fall 2011
On-Campus						
Freshmen		380	423	386	388	393
Total	Women	659	694	703	764	783
	Men	<u>214</u>	<u>246</u>	<u>259</u>	<u>249</u>	<u>282</u>
	Total	873	940	962	1,013	1,065
Percent of Total Full-time		47%	49%	47%	48%	50%
Off-Campus						
Full-time	Women	657	666	731	708	695
	Men	<u>309</u>	<u>327</u>	<u>356</u>	<u>378</u>	<u>352</u>
	Total	956	993	1,087	1,086	1,047
Part-time	Women	70	89	59	66	80
	Men	<u>41</u>	<u>49</u>	<u>36</u>	<u>38</u>	<u>63</u>
	Total	111	138	95	104	143

Students with Disabilities

Undergraduate: 128 (5.7%)

Graduate: 32 (2.8%)

Study Abroad Program – Locations and Majors of Students

American Institute for Foreign Study	Spain	BS Psychology
Council on International Educational Exchange	Jordan	BA Criminal Justice
Studio Art Centers International	Italy	BFA Studio Art (Painting)
Studio Art Centers International	Italy	BFA Studio Art (Painting)
Studio Art Centers International	Italy	BA Art Education
Studio Art Centers International	Italy	BFA Studio Art (Sculpture)
Studio Art Centers International	Italy	BFA Design (Illustration)
Trinity Saint David	Wales	BBA Marketing
Queen Mary	England	BA Digital Media & Broadcast Production (Broadcast)

9 students are currently studying abroad

Fall 2011 International Student Enrollment

By Country of Origin

Undergraduate:

Brazil	1
Bulgaria	1
China	1
Columbia	1
Honduras	1
Indonesia	1
Japan	1
Republic of Cameroon	1
Saudi Arabia	11
South Korea	4
Tanzania	1
Trinidad & Tobago	1
Total Undergraduate:	25 (1.1%)

Graduate:

China	2
Czech Republic	1
India	3
Indonesia	1
Kenya	4
Peru	1
Saudi Arabia	2
Singapore	1
Taiwan	1
Turkey	1
Total Graduate:	17 (1.5%)

By Major Course of Study

Undergraduate:

B (Undeclared, with interest in Education)
 BA Art Therapy
 BBA Aviation Management (Prof Pilot/
 Flight Operations)
 BBA Computer Information &
 Telecommunication Systems
 BBA Financial Planning
 BBA Management
 BM Music Performance
 BS Medical Laboratory Science
 BS Psychology (Industrial/Organizational)
 Intensive English Program
 Transfer Credit

Graduate:

Admission in Process (HHS)
 MA Communication Arts (Interdisciplinary)
 MA Communication Arts (Media
 Management)
 MA Psychology (General Theoretical)
 MAT Secondary/K-12 Education
 MBA Bus Adm (General Management)
 MEd Instructional Leadership
 MHSA Health Services Administration
 MSW Social Work
 Ph.D. Human Development (Instructional
 Leadership)

Honors Program - Majors Represented

B (Pre-Physician Asst Studies)	BFA Studio Art (Illustration)
B (Undeclared, Interest Unspecified)	BM Music Education
BA Arts Administration (Music)	BM Music Therapy
BA Comprehensive Social Science (Sociology)	BS Biology (Pre-Professional)
BA Criminal Justice	BS Biotechnology
BA English	BS Communication Sciences and Disorders (Pre-Professional)
BA English/Secondary Education	BS Early Childhood Education
BA History	BS Mathematics
BA History-Social Science/Secondary Education	BS Mathematics/Secondary Education
BA Philosophy	BS Nutrition & Dietetics
BA Spanish/Secondary Education	BS Psychology
BBA Accounting	BS Psychology (Clinical Practice)
BBA International Business	BS Special Education
BBA Marketing	BSN Nursing – Pre-Service
BEDA Environmental Design-Architecture	BSW Social Work
BFA Graphic Design	

Honors Courses Offered in 2011-2012

Fall 2011

ART History of Art I	MATH History of Mathematics
ART Postmodern Women: Literature & Art	Theory of Numbers
BIOL Introduction to Biotechnology	PHIL Introduction to Philosophy
BUS Marketing Research	Ethics
CHEM Organic Chemistry	Philosophy of Music
CSD Audiology	Senior Honors Thesis
Communication Disorders in Adults	P S American Government and Politics
C J Criminal Law and Procedure	PSY General Psychology
ENGL Writing Skills	Developmental Psychology
Chaucer	Contemporary Approaches to Learning
HIST Roots of the Modern World	Theories of Personality
Ethnicity and Diversity in the Modern World	R ST Modern Belief
Hunger in the 21 st Century	Introduction to the Bible
Senior Honors Thesis	SPAN Spanish for the Health Professional
MUSC History of Music I	Advanced Spanish Composition and Conversation I

Spring 2012

ART Art in the Modern Era	MUSC History of Music II
CSD Articulation and Phonologic Disorders	PHIL Introduction to Philosophy
ENGL Introduction to World Literature	PSY Developmental Psychology
HIST Global History of the Twentieth Century	R ST Foundations of Christian Morality

83 students are enrolled in honors courses for Fall 2011

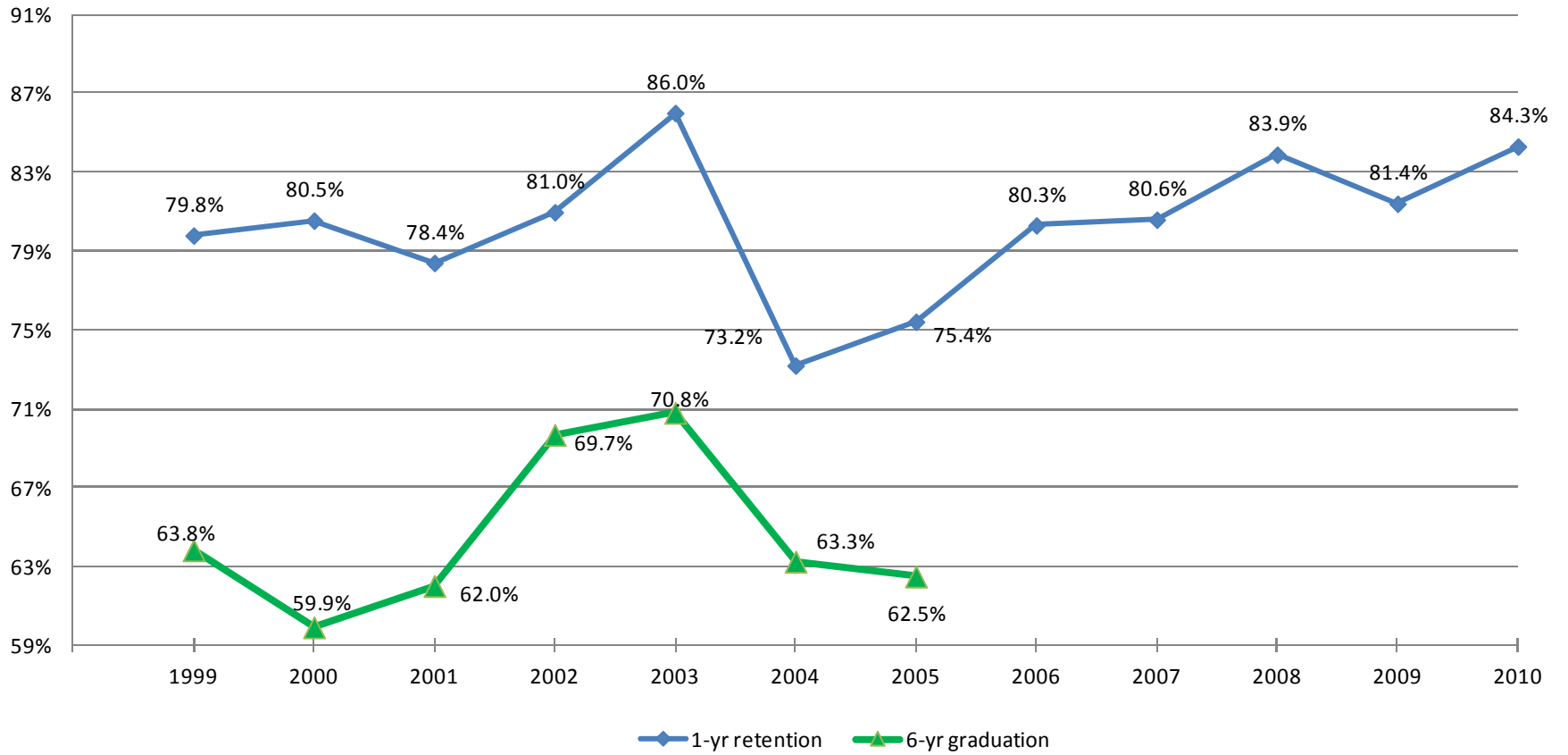
Retention and Graduation Rates for First-Time Full-Time Freshmen by Year of Entry - Fall 1999 to Fall 2011

Entering Fall Term	Retention Rates								Graduation Rates			
	1st Fall	2nd Fall	3rd Fall	4th Fall	5th Fall	6th Fall	7th Fall	8th Fall	within 4 yrs	within 5 yrs	within 6 yrs	within 7 yrs
1999 N	282	225	194	184	70	12	7	2		171	180	183
% enrollment	100%	79.8%	68.8%	65.2%	24.8%	4.3%	2.5%	0.7%	41.8%	60.6%	63.8%	64.9%
2000* N	257	207	174	163	59	11	7	3	118	150	154	157
% enrollment	100%	80.5%	67.7%	63.4%	23.0%	4.3%	2.7%	1.2%	39.3%	58.4%	59.9%	61.1%
2001 N	287	225	200	191	78	9	2	1	101	170	178	180
% enrollment	100%	78.4%	69.7%	66.6%	27.2%	3.1%	0.7%	0.3%	39.7%	59.2%	62.0%	62.7%
2002 N	310	251	225	225	58	7	2	0	114	213	218	222
% enrollment	100%	81.0%	72.6%	72.6%	18.7%	2.3%	0.6%	0.0%	53.5%	68.7%	70.3%	71.6%
2003* N	277	239	210	203	45	6	0	0	166	188	196	199
% enrollment	100%	86.3%	75.8%	73.3%	16.2%	2.2%	0.0%	0.0%	54.9%	67.9%	70.8%	71.8%
2004 N	332	243	221	216	61	11	2	2	152	200	210	211
% enrollment	100%	73.2%	66.6%	65.1%	18.4%	3.3%	0.6%	0.6%	44.9%	60.2%	63.3%	63.6%
2005* N	301	227	201	193	33	3	0		149	184	188	
% enrollment	100%	75.4%	66.8%	64.1%	11.0%	1.0%	0.0%		50.8%	61.1%	62.5%	
2006* N	383	307	285	270	67	9			153	197	254	
% enrollment	100%	80.2%	74.4%	70.5%	17.5%	2.3%			51.4%	66.3%		
2007* N	407	328	283	274	48				218			
% enrollment	100%	80.6%	69.5%	67.3%	11.8%				53.6%			
2008 N	422	354	306	296					5			
% enrollment	100%	83.9%	72.5%	70.1%					1.2%			
2009* N	412	335	296									
% enrollment	100%	81.3%	72.3%									
2010* N	451	380										
% enrollment	100%	84.3%										
2011 N	456											
% enrollment	100%											

NOTE: Average graduation rate computed by Student Right to Know (SRK) formula for 4-year programs is 66.6%

*Student(s) removed from cohort

Trends in 1-Year Retention and 6-year Graduation Rates of First-year Full-time Freshmen Fall 1999 to Fall 2010 Cohorts



Athletics and Recreation

Marywood sponsors highly competitive intercollegiate teams in seventeen varsity sports. Marywood is a member of the National Collegiate Athletic Association (NCAA) Division III, the Colonial States Athletic Conference (CSAC), the Eastern College Athletic Conference (ECAC), and Landmark Conference. Marywood currently offers nine sports for females and eight for males:

Female	Male
Basketball	Basketball
Cross Country	Cross Country
Field Hockey	Golf
Lacrosse	Lacrosse
Soccer	Soccer
Softball	Baseball
Swimming/Diving	Swimming/Diving
Tennis	Tennis
Volleyball	

A diverse selection of coed intramural and club sports is available. Sponsored club sports have included climbing, dance team, cheerleading and soccer to name a few. Intramural sports offer a wide range of physical activities. Traditional programs such as basketball, volleyball, flag football, tennis and softball are offered in addition to innovative programs such as ultimate Frisbee and kickboard water polo. Recreation programs include land and water aerobic classes (free for students), special competitive events, and fitness challenges.

The \$14 million dollar Robert J. Mellow Center for Athletics and Wellness opened in the fall of 2006. The Mellow Center offers state-of-the-art fitness, recreation, and athletic opportunities and includes a premier fitness center, a climbing wall, an elevated running track, a dance/aerobic studio, an arena to showcase Pacer sports, and high tech athletic training areas. A new Aquatics Center adjacent to the Mellow Center opened in the spring 2011 semester and features eight lanes, one-meter and three-meter diving boards, spectator seating and team rooms. This represents the final phase of a \$25 million dollar expansion to Marywood's athletic and recreation facilities. Additional outdoor facilities include a new multipurpose turf field, tennis courts, sand volleyball court, basketball courts, and three grass fields.

- Student Athlete Academic Honor Roll Participation:

Fall 2010	65
Spring 2011	60

- Intramural Participation:

Fall 2010	225
Spring 2011	247

- Athletic Honors/Achievements (1992-2011):
 - ECAC South Region Championship – 1
 - CSAC Overall President's Cup – 1
 - CSAC Men's President's Cup – 1
 - CSAC Women's President's Cup – 1
 - Team PAC Championships: 26
 - Team Conference Runners-up – 24
 - Conference Coach of the Year – 34
 - Conference Female Scholar Athlete of the Year – 2001, 2006, 2008, 2009
 - Conference Male Scholar Athlete of the Year – 2005
 - All Conference Team Members

First Team – 240	Honorable Mention – 111
Second Team – 207	All Sportsmanship Team – 92
 - Men's Cross Country Conference Individual Champion – 1998, 2000
 - Women's Soccer Conference Player of the Year – 2002, 2008, 2009
 - Women's Soccer Rookie of the Year – 1999, 2009
 - Women's Cross Country Conference Individual Champion – 2004, 2006, 2010
 - Women's Field Hockey Conference Player of the Year – 2001
 - Volleyball Conference Player of the Year – 1992
 - Women's Tennis Conference Player of the Year - 1999
 - Women's Lacrosse Conference Rookie of the Year - 2009
 - Men's Tennis Conference Player of the Year – 2008
 - NCAA Post Graduate Scholarships – 2001, 2002, 2006

II. PERSONNEL

Employees by Ethnicity, EEO Category and Time Status

EEO-6 CATEGORY		07-08	08-09	09-10	10-11	11-12
<u>Executive/Administrative/Managerial</u>						
Full-Time	White	37	42	41	46	44
	Other	2	2	2	0	3
Part-Time	White	2	2	1	0	0
<u>Faculty (instructional only)</u>						
Full-Time	White	124	127	133.25	137.25	132
	Other	8	10	12	14	21
Part-Time	White	180	181	222	237	231
	Other	10	9	18	11	57
<u>Professional (includes librarians)</u>						
Full-Time	White	108	104	115	114.5	108
	Other	6	5	5	8	9
Part-Time	White	38	28	28	36	27
	Other	1	1	0	2	3
<u>Secretarial/Clerical</u>						
Full-Time	White	114	103	97	97	103
	Other	1	3	3	2	1
Part-Time	White	24	24	24	26	18
	Other	2	5	4	3	5
<u>Technical/Paraprofessional</u>						
Full-Time	White	23	24	21	18	20
	Other	0	0	1	1	1
Part-Time	White	14	7	5	5	5
	Other	3	3	0	0	0
<u>Skilled Craft</u>						
Full-Time	White	18	21	22	20	22
<u>Service/Maintenance</u>						
Full-Time	White	89	84	82	79	81
	Other	0	0	0	1	4
Part-Time	White	16	13	12	16	8
	Other	0	0	1	1	2
Total						
Full-Time	White	513	505	511.25	511.75	510
	Other	17	20	23	26	39
Part-Time	White	274	255	292	320	289
	Other	16	18	23	17	67

Full-time Employees by Gender and Ethnicity

EEO-6 CATEGORY	07-08		08-09		09-10		10-11		11-12	
	M	F	M	F	M	F	M	F	M	F
<u>Executive/Administrative/Managerial</u>										
White	16	21	20	22	21	20	22	24	20	24
Black	0	0	0	0	0	0	0	0	0	1
Asian/Pacific Islander	0	0	0	0	0	0	0	0	0	0
Amer Ind/Alaskan Native	0	1	0	1	0	1	0	0	0	0
Other	1	0	1	0	1	0	0	0	1	1
<u>Faculty (instructional only)</u>										
White	54	70	48	68	57.5	75.75	57	80.25	63	69
Black	2	0	2	0	2	1	2	1	1	1
Hispanic	1	0	1	1	2	1	1	2	1	2
Asian/Pacific Islander	4	1	4	2	4	2	5	3	6	3
Other	0	0	0	0	0	0	0	0	2	5
<u>Professional (includes librarians)</u>										
White	18	90	20	84	25	90	31	83.5	31	77
Black	1	1	0	1	0	1	1	1	0	1
Hispanic	1	0	0	0	0	0	0	1	0	1
Asian/Pacific Islander	1	2	1	3	1	3	1	4	1	2
Other	0	0	0	0	0	0	0	0	2	2
<u>Secretarial/Clerical</u>										
White	8	106	5	99	5	92	4	93	3	100
Black	0	1	0	2	0	2	0	2	0	0
Hispanic	0	0	0	0	0	1	0	0	0	0
Other	0	0	0	0	0	0	0	0	0	1
<u>Technical/Paraprofessional</u>										
White	13	10	12	11	11	10	10	8	12	8
Hispanic	0	0	0	0	0	1	0	1	0	1
<u>Skilled Craft</u>										
White	18	0	21	0	22	0	20	0	22	0
<u>Service/Maintenance</u>										
White	48	41	44	40	43	39	38	41	39	42
Black	0	0	0	0	0	0	1	0	0	1
Other	0	0	0	0	0	0	0	0	2	1
Total										
White	175	338	170	324	184.5	326.75	182	329.75	190	320
Black	3	2	2	3	2	4	4	4	1	4
Hispanic	2	0	1	1	2	3	1	4	1	4
Asian/Pacific Islander	5	3	5	5	5	5	6	7	7	5
Amer Ind/Alaskan Native	0	1	0	1	0	1	0	0	0	0
Other	1	0	1	0	1	0	0	0	7	10
	186	344	175	334	194.5	339.75	193	344.75	206	343

Number of Full-time and Pro-rata Faculty by College

	<u>2007</u>	<u>2008</u>	<u>2009</u>	<u>2010</u>	<u>2011</u>
Reap College of Education and Human Development					
Full-time	26	24	29	29	32
Pro-rata	3	2	2	2	1
FTE	27.5	25	30	30	32.75
Insalaco College of Creative and Performing Arts					
Full-time	33	33	24	25	26
Pro-rata	13	14	8	5	6
FTE	39.5	40	28	27.5	29
College of Health and Human Services					
Full-time	33	34	33	37	40
Pro-rata	3	4	4	5	8
FTE	34.5	36	35	39.5	44
College of Liberal Arts and Sciences					
Full-time	33	33	45	46	49
Pro-rata	3	4	6	6	4
FTE	34.5	35	48	49	51
School of Architecture					
Full-time			3	5	6
Pro-rata			0	0	0
FTE			3	5	6
Librarians					
Full-time	8	8	8	7	5
Pro-rata	0	0	0	1	0
FTE	8	8	8	7.5	5
TOTAL					
Full-time	133	132	142	149	158
Pro-rata	22	24	20	19	19
FTE	144	144	152	158.5	167.75

Tenure Status Among Full-time Faculty

	2007		2008		2009		2010		2011	
	<u>N</u>	<u>%</u>	<u>N</u>	<u>%</u>	<u>N</u>	<u>%</u>	<u>N</u>	<u>%</u>	<u>N</u>	<u>%</u>
Professor	29	100.0	25	100.0	25	100.0	22	100.0	23	100.0
Assoc Professor	35	81.4	29	76.3	31	73.8	28	68.3	34	75.6
Asst Professor	9	16.7	8	14.3	5	15.6	6	9.1	5	6.8
Instructor	<u>0</u>	<u>0.0</u>	<u>0</u>	<u>0.0</u>	<u>0</u>	<u>0.0</u>	<u>0</u>	<u>0.0</u>	<u>0</u>	<u>0.0</u>
Total University	73	54.9	62	50.0	61	43.7	56	37.3	62	40.0

Number of Full-time Faculty by Rank and Gender

	<u>2007</u>	<u>2008</u>	<u>2009</u>	<u>2010</u>	<u>2011</u>
Professor					
Male	17	14	14	12	13
Female	12	11	11	10	10
Total	29	25	25	22	23 (14.56%)
Associate Prof.					
Male	16	12	16	17	19
Female	27	26	26	23	26
Total	43	38	42	40	45 (28.48%)
Assistant Prof.					
Male	27	30	31	34	42
Female	27	26	28	31	35
Total	54	56	59	65	77 (48.73%)
Instructor					
Male	2	1	2	2	1
Female	5	12	10	12	1
Total	7	13	12	14	2 (1.27%)
Clinical Instructor					
Male			0	0	0
Female			4	8	11
Total			4	8	11 (6.96%)
Total Full-time	133	132	142	149	158

Number of Full-time Faculty with Terminal Degrees

	2007		2008		2009		2010		2011	
	<u>N</u>	<u>%</u>	<u>N</u>	<u>%</u>	<u>N</u>	<u>%</u>	<u>N</u>	<u>%</u>	<u>N</u>	<u>%</u>
Doctorate	96	72.2	91	68.9	99	69.7	100	67.1	121	76.6
MSLS/MLIS	7	5.3	7	5.3	8	5.6	7	4.7	5	3.2
MFA/MPhys Asst/ MArch	11	8.3	12	9.1	12	8.5	15	10.1	17	10.8
JD/MD	<u>0</u>	<u>0.0</u>	<u>0</u>	<u>0.0</u>	<u>2</u>	<u>1.4</u>	<u>1</u>	<u>0.7</u>	<u>0</u>	<u>0.0</u>
Total University	114	85.7	110	83.3	121	85.2	123	82.6	143	90.5

III. FINANCES

Unrestricted Operating Revenues

	FY 08-09	FY 09-10	FY 10-11
Tuition and fees:			
Tuition:			
Undergraduate School - On Campus	\$48,310,110	\$52,402,219	\$55,012,880
Undergraduate - OCDP	109,110	93,678	62,400
Graduate School of Arts & Sciences	11,118,634	10,743,447	10,587,656
Graduate School of Social Work	4,530,436	4,607,054	4,701,231
Total Tuition	64,068,290	67,846,398	70,364,167
Less Scholarship Allowances	-24,324,749	-27,011,038	-29,266,163
Net Tuition	\$39,743,541	\$40,835,360	\$41,098,004
Fees:			
Registration and Application	132,465	88,705	88,035
General	2,154,240	2,316,560	2,540,112
Music Lessons	166,641	167,383	158,462
Student Teaching	4,200	3,300	2,460
Graduation	178,000	186,750	195,075
Orientation	131,927	145,027	156,133
Student Activities Fees	438,130	454,206	457,801
Non-credit Offerings	402,679	325,148	393,590
Miscellaneous	770,942	849,072	937,957
Total Fees	\$4,379,224	\$4,536,151	\$4,934,625
Total Tuition and Fees (Net)	\$44,122,765	\$45,371,511	\$46,938,129
Federal Grants and Contracts	\$1,048,467	\$1,256,494	\$1,029,385
State Grants and Contracts	1,811,864	1,078,208	2,411,037
Private Gifts and Grants	1,081,198	859,611	830,894
Income on Long-Term Investments	387,889	6,240	526,202
Other Investment Income	528,377	439,472	167,184
Net Unrealized and Realized Gains on Long-Term Investments	-166,768	191,408	-1,108,523
Sales and Services of Educational Activities	311,288	299,736	314,726
Contributed Services, Net	0	0	0
Other Sources	615,425	693,870	551,442
	\$5,617,740	\$4,825,039	\$4,722,347
Sales and Services of Auxiliary Enterprises:			
Food Service	\$4,364,026	\$4,689,553	\$5,322,364
Resident Halls	6,219,675	6,690,732	7,435,199
Bookstore	1,432,758	1,324,237	1,168,490
Fricchione Day Care Center	504,831	524,910	565,014
Total Sales and Services of Auxiliary Enterprises	\$12,521,290	\$13,229,432	\$14,491,067
Total Net Assets Released From Restrictions	2,818,568	2,862,225	2,824,083
Total Current Revenues	\$65,080,363	\$66,288,207	\$68,070,124

Percent Distribution of Unrestricted Operating Revenues

	FY 08-09 <u>% of Total</u>	FY 09-10 <u>% of Total</u>	FY 10-11 <u>% of Total</u>
Tuition and fees:			
Tuition:			
Undergraduate School - On Campus	74.2	79.1	80.8
Undergraduate - OCDP	0.2	0.1	0.1
Graduate School of Arts & Sciences	17.1	16.2	15.6
Graduate School of Social Work	7.0	7.0	6.9
Total Tuition	<u>98.4</u>	<u>102.4</u>	<u>103.4</u>
Less Scholarship Allowances	<u>-37.4</u>	<u>-40.7</u>	<u>-43.0</u>
Net Tuition	<u>61.1</u>	<u>61.6</u>	<u>60.4</u>
Fees:			
Registration and application	0.2	0.1	.01
General	3.3	3.5	3.7
Music lessons	0.3	0.3	0.2
Student teaching	0.0	0.0	0.0
Graduation	0.3	0.3	0.3
Orientation	0.2	0.2	0.2
Student Activities Fees	0.7	0.7	0.7
Non-credit offerings	0.6	0.5	0.6
Miscellaneous	1.2	1.3	1.4
Total Fees	<u>6.7</u>	<u>6.8</u>	<u>7.2</u>
Total Tuition and Fees (Net)	<u>67.8</u>	<u>68.4</u>	<u>67.6</u>
Federal Grants and Contracts	1.6	1.9	1.5
State Grants and Contracts	2.8	1.6	3.5
Private Gifts and Grants	1.7	1.3	1.2
Income on Long-Term Investments	0.6	0.0	0.8
Other Investment Income	0.8	0.7	0.2
Net Unrealized and Realized Gains on Long-Term Investments	-0.3	0.3	-1.6
Sales and Services of Educational Activities	0.5	0.5	0.4
Contributed Services, Net	0.0	0.0	0.0
Other Sources	0.9	1.0	0.8
	<u>8.6</u>	<u>7.3</u>	<u>6.8</u>
Sales and Services of Auxiliary Enterprises:			
Food service	6.7	7.1	7.8
Resident halls	9.6	10.1	10.9
Bookstore	2.2	2.0	1.7
Fricchione Day Care Center	0.8	0.8	0.8
Total Sales and Services of Auxiliary Enterprises	<u>19.2</u>	<u>20.0</u>	<u>21.3</u>
Total Net Assets Released From Restrictions	4.3	4.3	4.1
Total Current Revenues	<u>100.0</u>	<u>100.0</u>	<u>100.0</u>

Unrestricted Operating Expenditures

	FY 08-09	FY 09-10	FY 10-11
Educational and General:			
Instruction	\$21,219,701	\$22,764,241	\$24,117,752
Research	777,979	347,841	264,944
Academic Support	7,506,077	7,615,282	7,393,454
Student Services	9,715,367	9,668,228	9,951,461
Institutional Support	11,721,389	12,044,173	12,693,535
Student Aid	348,687	325,467	389,081
Educational and General Expenditures	\$51,289,200	\$52,765,232	\$54,810,227
Auxiliary Enterprises	10,024,270	10,167,061	11,089,059
Total Expenditures	\$61,313,470	\$62,932,293	\$65,899,286

Percent Distribution of Unrestricted Operating Expenditures

	FY 08-09 % of Total	FY 09-10 % of Total	FY 10-11 % of Total
Educational and General:			
Instruction	34.6	36.2	36.6
Research	1.3	0.6	0.4
Academic Support	12.2	12.1	11.2
Student Services	15.8	15.4	15.1
Institutional Support	19.1	19.1	19.6
Student Aid	0.6	0.5	0.6
Educational and General Expenditures	83.7	83.8	83.2
Auxiliary Enterprises	16.3	16.2	16.8
Total Expenditures	100.0	100.0	100.0

**Externally Sponsored Research
as a Percentage of
Unrestricted Operating Expenditures**

	<u>FY 08-09</u>	<u>FY 09-10</u>	<u>FY 10-11</u>
Total Unrestricted Operating Expenditures	\$61,313,470	\$62,932,293	\$65,899,286
Externally Sponsored Research Expenditures	777,979	347,841	264,944
Research Support as Percent of Total	1.27%	0.55%	0.40%

Endowment, Quasi-Endowment and Other Long-Term Investments

	<u>2008-09</u>	<u>2009-10</u>	<u>2010-11</u>
Endowment and Similar Funds:			
Quasi-Endowment, income designated for Graduate School of Arts and Sciences	\$465,451	\$465,451	\$465,451
Quasi-Endowment, income designated for scholarship aid	491,066	493,162	501,312
Quasi-Endowment, income not designated	14,325,086	17,894,898	19,731,095
Total Quasi-Endowment	<u>\$15,281,603</u>	<u>\$18,853,511</u>	<u>\$20,697,858</u>
Life Income Trust	26,980	28,490	28,863
Endowment	<u>15,087,174</u>	<u>16,269,869</u>	<u>17,364,785</u>
Total Endowment and Similar Funds	\$30,395,757	\$35,151,870	\$38,091,506
Other Long-Term Investments:			
Beneficial Interest in Perpetual Trusts	818,898	878,259	1,001,524
For matching funds under Federal Student Loan Program	267,455	267,409	243,862
Other	<u>639,614</u>	<u>727,724</u>	<u>859,953</u>
Total Other Long-Term Investments	<u>\$1,725,967</u>	<u>\$1,873,392</u>	<u>\$2,105,339</u>
Total Long-Term Investments	<u>\$32,121,724</u>	<u>\$37,025,262</u>	<u>\$40,196,845</u>

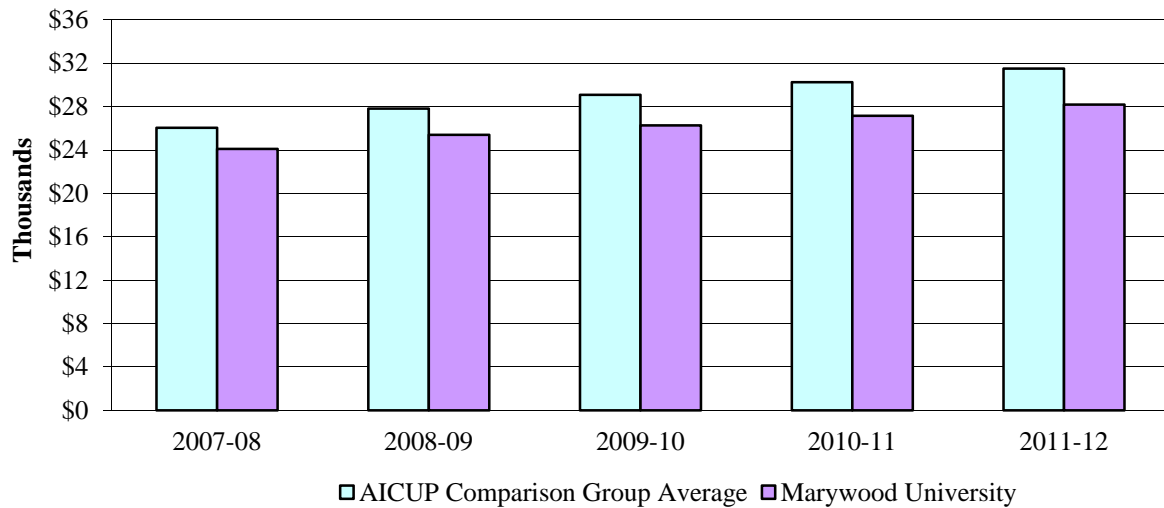
Tuition, Fees, Room and Board Charges

	<u>FY 07-08</u>	<u>FY 08-09</u>	<u>FY 09-10</u>	<u>FY 10-11</u>	<u>FY 11-12</u>
<u>Tuition Rates Per Credit</u>					
<i>Undergraduate</i>	\$550	\$550	\$575	\$590	\$600
<i>Distance Learning</i>	395	450	460	470	478
<i>Masters Level</i>	695	695	715	735	750
<i>Master of Fine Arts</i>	695	695	715	735	750
<i>Master of Social Work</i>	695	695	715	735	750
<i>Master of Public Administration</i>	695	695	715	735	750
<i>Master of Social Work (off-campus)</i>	695	695	715	735	750
<i>Master of Social Work (Bloomsburg Program)</i>	560	560	575	590	600
<i>Doctoral Level</i>	750	785	810	830	840
<i>Ph.D. (Hershey)</i>	780	815	840	860	870
<i>Keystone Professional Studies</i>	560				
<u>General Fee Per Year</u>					
<i>Full-Time</i>	\$850	\$890	\$920	\$950	\$975
<i>Part-Time</i>	300	340	370	400	425
<u>Student Activities Fee Per Year</u>					
<i>UG - Full-Time</i>	\$200	\$200	\$200	\$200	\$200
<i>UG - Part-Time</i>	100	100	100	100	100
<i>GR – Full- & Part-Time</i>	40	40	40	40	40
<u>Registration Fee Per Year</u>					
	\$100	\$100	\$100	\$100	\$100
<u>Room & Meals Per Year</u>					
<i>Double Room and 24 Meals/Week-\$100 PP</i>	10,620	\$11,330	\$11,728	\$12,172	\$12,520
<i>Double Room and 19 Meals/Week-\$200 PP</i>	10,410	11,108	11,498	12,172	12,520
<i>Double Room and 15 Meals/Week-\$300 PP</i>	10,410	11,108	11,498	12,172	12,520
<i>Double Room and 185 Block Plan-\$100 PP</i>	10,410	11,108	11,498	11,934	12,270
<i>Double Room and 150 Block Plan-\$100 PP</i>	9,780	10,458	10,826	11,238	11,550
<i>Single Room Fee (additional charge)</i>	850	1,255	1,414	1,552	1,584
<u>Other Major Fees</u>					
<i>New Student Matriculation Fee</i>	\$200	\$200	\$225	\$225	\$225
<i>Graduation Fee</i>	200	225	225	225	225
<i>Music Lessons (per half hour per credit charge in addition to tuition)</i>	395	395	395	395	395
<u>Undergraduate Cost of Attendance</u>					
<i>Tuition for Full-Time Students</i>	\$23,040	\$24,300	\$25,150	\$26,000	\$27,000
<i>Room & Meals (19 meals)</i>	10,410	11,108	11,498	12,172	12,520
<i>General Fee</i>	850	890	920	950	975
<i>Student Activities Fee</i>	200	200	200	200	200
Total Cost Per Year	\$34,500	\$36,498	\$37,768	\$39,322	40,695

**Total Cost for Tuition & Required Fees and Room and Board
Marywood University and AICUP Peer Institutions**

	2009-10 \$	2010-11 \$	2011-12 \$	most recent increase %
<u>Tuition and Fees</u>				
Marywood University	26,270	27,150	28,175	3.8%
Arcadia University	31,260	32,720	34,150	4.4%
Gannon University	23,574	24,582	25,522	3.8%
Immaculata University	26,540	27,870	28,850	3.5%
King's College	25,644	26,644	27,680	3.9%
La Roche College	21,638	22,476	23,160	3.0%
La Salle University	32,700	33,700	35,140	4.3%
Misericordia University	24,050	24,990	25,990	4.0%
St. Francis University	25,554	26,534	27,808	4.8%
St. Joseph's University	34,090	35,230	36,640	4.0%
Susquehanna University	32,450	34,070	35,860	5.3%
University of Scranton	33,124	34,536	36,042	4.4%
Villanova University	38,563	39,930	41,110	3.0%
Widener University	31,840	33,270	34,762	4.5%
Wilkes University	26,010	27,178	28,210	3.8%
<u>Room & Board</u>				
Marywood University	11,498	12,172	12,520	2.9%
Arcadia University	10,680	11,150	11,640	4.4%
Gannon University	9,330	9,720	10,230	5.2%
Immaculata University	10,920	11,460	11,460	0.0%
King's College	9,838	10,068	10,670	6.0%
La Roche College	8,756	8,916	9,182	3.0%
La Salle University	11,150	11,540	12,010	4.1%
Misericordia University	10,050	10,410	10,760	3.4%
St. Francis University	8,718	9,066	9,520	5.0%
St. Joseph's University	11,575	11,925	12,206	2.4%
Susquehanna University	8,800	9,230	9,600	4.0%
University of Scranton	11,440	11,862	12,432	4.8%
Villanova University	10,340	10,640	10,960	3.0%
Widener University	11,270	11,720	11,896	1.5%
Wilkes University	11,100	11,470	11,698	2.0%

Tuition and Fees: AICUP Comparison Group Average v. Marywood University



Student Financial Aid

Funding Source	FY 06-07	FY 07-08	FY 08-09	FY 09-10	FY 10-11
Institutional Aid					
Marywood University	\$17,956,688	\$20,937,917	\$23,631,961	\$26,318,023	\$28,811,004
Endowments	47,126	44,183	47,730	50,380	38,650
Institutional Aid	\$18,003,814	\$20,982,100	\$23,679,691	\$26,368,403	\$28,849,654
Federal, State, and Private Aid					
Federal	2,093,412	2,433,434	2,654,429	3,736,795	3,990,402
State	2,915,731	2,965,606	2,534,390	2,525,943	2,511,828
Private	182,989	196,412	192,645	129,137	74,280
Federal, State and Private Aid	\$5,192,132	\$5,595,452	\$5,381,464	\$6,391,875	\$6,576,510
Grand Total	\$23,195,946	\$26,577,552	\$29,061,155	\$32,760,278	\$35,426,164

For comparability, Pell and PHEAA grants (listed below) are included in the above federal and state sources, respectively. These amounts are excluded from the audited financial statements.

Pell Grants	\$1,512,921	\$1,809,117	\$1,959,345	\$2,995,400	\$3,290,094
PHEAA Grants	\$2,838,451	\$2,806,108	\$2,428,375	\$2,806,468	\$2,480,826

Total Gifts and Grants (Fiscal Gifts)

<u>Source</u>	<u>FY '07</u> <u>Amount</u>	<u>FY '08</u> <u>Amount</u>	<u>FY '09</u> <u>Amount</u>	<u>FY '10</u> <u>Amount</u>	<u>FY '11</u> <u>Amount</u>	<u>Five Year</u> <u>Amount</u>
Alumni	\$1,460,944	\$1,723,107	\$890,149	\$587,763	\$625,042	\$5,287,005
Foundations/Corporations	1,961,994	1,760,720	1,902,118	1,865,504	2,295,853	9,786,189
Friends	2,425,930	1,538,072	922,478	1,181,142	1,293,190	7,360,812
Parents	33,729	95,539	43,616	37,659	38,310	248,853
Sub-total	\$5,882,597	\$5,117,437	\$3,758,362	\$3,672,068	\$4,252,395	\$22,682,859
Sisters, Servants of the Immaculate Heart of Mary						
I.H.M. Scholarship Gift	250,000	255,000	250,000	225,000	200,000	1,180,000
Competitive Government Grants and Contracts	557,827	3,068,439	1,583,218	648,319	398,163	6,255,966
Sub-total	\$ 807,827	3,323,439	\$1,833,218	\$873,319	\$598,163	\$7,435,966
Grand Total	\$6,690,424	\$8,440,875	\$5,591,580	\$4,545,387	\$4,850,558	\$30,118,824

Corporate/Foundation Relations Office Activity

Externally Awarded Grants*

<u>Area</u>	<u>FY 2009</u>		<u>FY 2010</u>		<u>FY 2011</u>	
	<u>N</u>	<u>Amount</u>	<u>N</u>	<u>Amount</u>	<u>N</u>	<u>Amount</u>
Insalaco College of Creative Arts and Management	3	\$22,892	3	\$9,782		\$9,821
Reap College of Education and Human Development	0	0	2	\$298,734		\$340,029
College of Health and Human Services	3	\$58,847	5	\$103,824		\$14,755
College of Liberal Arts and Sciences	0	0	2	\$9,500		\$9,500
Student Life	1	\$11,500	1	\$11,350		0
Institutional	7	\$2,575,439	6	\$586,400		\$500,625
TOTAL	14	\$2,688,439	19	\$1,019,590		\$874,730

*Some grants may be duplicated between Corporate/Foundation Relations and Office of Research and Sponsored Programs

Alumni Giving Fiscal Years 2007 – 2011

<u>Fiscal Year</u>	<u>Number of Donors</u>	<u>% Participation</u>	<u>Total Giving</u>	<u>Average Gift</u>
2007	3,821	16.5	1,460,944	382.35
2008	3,967	16.7	1,723,107	434.36
2009	4,134	16.2	890,149	215.32
2010	3,913	15.1	587,763	150.21
2011	3,385	12.7	625,042	184.65

Office of Research and Sponsored Programs

Academic Affairs Research and Program Grants and Contracts (Public and Private Funds)

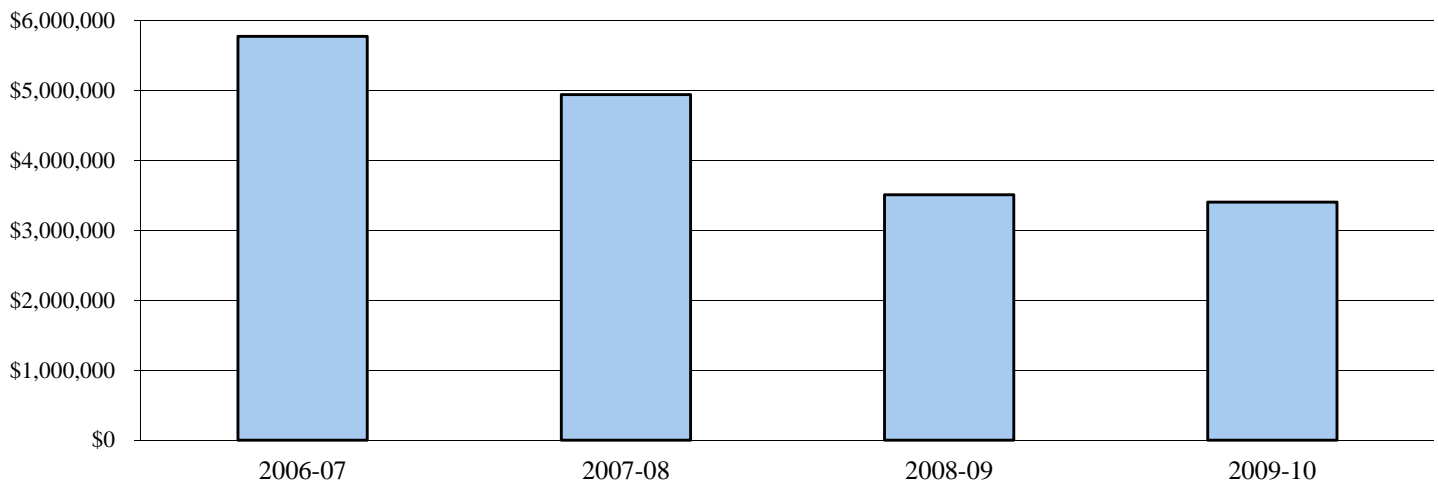
FY 2005-06	\$1,064,825	FY 2008-09	\$2,218,130
FY 2006-07	\$1,191,032	FY 2009-10	\$1,333,016
FY 2007-08	\$1,920,238	FY 2010-11	\$1,457,680

Gift* Levels by Campaign Year Giving by Gift Size

Current Operations	2007-08		2008-09		2009-10		2010-11	
	N	\$	N	\$	N	\$	N	\$
\$5,000	36	1,638,505	29	1,574,469	38	1,537,443	26	1,662,688
\$2,500-4,999	32	94,493	31	88,078	34	89,853	39	128,865
\$1,000-2,499	116	131,519	104	133,281	124	141,967	105	145,123
\$250-999	336	119,587	352	103,234	377	143,191	367	144,434
\$100-249	1076	138,719	1,137	134,433	1015	120,969	1008	126,192
\$1-99	2354	86,177	2,588	79,651	2,371	81,190	2351	81,629
Totals	3,950	2,209,000	4,241	2,113,146	3,959	2,114,613	3,896	2,288,931
Capital and Endowment								
\$5,000	63	2,921,676	44	1,715,106	48	1,595,727	48	2,029,434
\$2,500-4,999	23	65,245	11	36,280	21	54,754	15	40,081
\$1,000-2,499	74	95,726	59	77,619	68	85,529	38	51,446
\$250-999	120	48,985	80	40,471	71	26,901	51	24,035
\$100-249	199	25,051	150	18,645	136	16,790	109	14,033
\$1-99	176	6,753	182	7,007	79	2,755	109	4,436
Totals	655	3,163,436	526	1,895,218	423	1,782,456	370	2,163,465
Total Giving by Year								
Current Operations & Capital and Endowment	4,605	5,372,436	4,767	4,008,364	4,382	3,897,069	4,266	4,452,396
Presidential Society	356	4,947,164	212	3,511,931	230	3,408,491	220	3,971,372

* Does not include Competitive Government Grants and Contracts

Total Presidential Society Giving



IV. FACILITIES

Land and Building Inventory

Land (In Acres):

	<u>June 30, 2007</u>	<u>June 30, 2008</u>	<u>June 30, 2009</u>	<u>June 30, 2010</u>	<u>June 30, 2011</u>
Land in Scranton, PA	70.0	70.0	70.0	70.3	71.3
Land in Dunmore, PA	43.4	43.4	43.4	43.4	51.4
Total	113.4	113.4	113.4	113.7	122.7

Buildings:

<u>Building</u>	<u>Predominant Function</u>	<u>Usable Square Footage</u>
Aquatic Center	Academic/Athletics/Recreation	16,372
Adams Avenue Property (#2205)	President's Residence	3,190
Adams Avenue Property (#2305)	Administrative	2,924
Adams Avenue Property (#2349)	Student Life Residence	2,857
Bethany Hall and Garage	Student Residence	4,970
Center for Architectural Studies	Academic	25,698
Center For Natural and Health Sciences	Academic	45,535
Chemical Room	Chemical Storage	320
Domiano Early Childhood Center	Special	2,810
Emmanuel Hall	Student Residence	8,359
Fricchione Day Care Center	Special	8,397
Immaculata Hall	Administration/Student Residence	31,994
Insalaco Center for Studio Arts	Academic	56,020
Keith J. O'Neill Center for Healthy Families	Academic/Special	24,828
Learning Resources Center	Library	66,182
Liberal Arts Center	Academic/Administrative	70,263
Loughran Hall	Student Residence/Administrative	109,247
Madonna Hall	Student Residence	51,674
Maria Hall	Administrative	5,020
McCarty Hall	Student Residence	4,921
McGowan Center for Graduate and Professional Studies	Academic	55,252
Perpetual Help Hall	Student Residence	3,574
Power Plant and Maintenance Building	Support	19,924
Printing and Mailing Center	Support	3,674
Regina Hall	Student Residence/Administrative	56,907
Richmont Street Property (#1210)	Student Residence/Administrative	4,269
Robert J. Mellow Center	Academic/Athletics/Recreation	62,727
Sette La Verghetta Center for Performing Arts	Academic	39,769
Shields Visual Arts Center	Academic	56,707
South Campus	Academic/Administrative	199,250
Student Center (Nazareth Hall)	Campus Life	52,197
Washington Avenue Property (#2400)	IHM Residence	3,183
Woodland Residences I	Student Residences	10,442
Woodland Residences II	Student Residences	26,190
Woodland Residences III	Student Residences	14,617
Total Square Footage		1,150,253
Net Book Value of Buildings (historical cost less accumulated depreciation)		\$101,317,200
Cost of Replacement		\$189,537,400

Leased facilities:

DeSales University - School of Social Work

University Library

	<u>2008/09</u>	<u>2009/10</u>	<u>2010/11</u>
<u>Resources</u>			
<i>Print Collection</i>			
Books and Bound Periodicals	220,998	220,530	222,033
Books Added	2,502	2,367	2,261
Print Journal Titles	414	404	411
Distinct Journal Titles (Electronic and Print)	17,923	28,091	29,756
Microfiche	364,677	364,677	364,677
Reels of Microfilm	13,471	13,497	13,567
<i>Media Collection</i>			
Art Prints	339	337	337
Audiotapes	7,530	7,520	2,791
Compact Discs	5,296	7,191	7,434
Computer Software	21	21	16
DVDs	3,046	3,911	4,174
Records	5,228	5,227	5,271
Slides	22,584	22,584	10,268
Sound Slidesets	27	27	14
Study Prints	418	418	418
Videorecordings	6,694	6,614	6,571
<i>Electronic Resources</i>			
Internet Databases	63	53	52
Full-Text Databases	52	51	51
<u>Expenditures</u>			
Books and Periodicals	\$226,526	\$209,862	\$204,151
Electronic Resources	115,015	110,253	134,984
Bindings	6,486	6,636	6,452
Non-Print Media	22,850	20,022	15,434
Supplies	19,554	8,560	7,923
<i>Interlibrary Loan</i>			
Borrowed	3,163	4,302	3,108
Loaned	6,893	4,852	4,816
<i>Staff</i>			
Professionals	9.0	9.0	8.5
Clerical	13.9	12.7	12.7
Student Assistants	26	25	23
Circulation – Total	26,953	29,752	21,146
Hours of Service/Week	84.5	86.5	92.5
Reference Transactions in a Typical Week	88	157	169
Gate Count in a Typical Week	2,419	3,668	4,450
No. of Presentations, Workshops, Etc.	134	138	181
No. of Students, Faculty Attending	2,073	2,089	2,320

Office of Information Technology

The Office of Information Technology (OIT) is responsible for providing technology support to the Marywood University campus. As the central organization of all IT resources on campus, it is made up of four departments: User Support Services, Application Programming Services, Network & Systems Administration Services, and Academic Computing Services.

User Support Services

User Support Services provides Help Desk and Training support. The Help Desk is centralized and multi-campus-wide, and provides desktop and software support, problem solving, response to new and other OIT service requests, and with the OIT staff answers all service requests. Training by expert User Support staff is given on Office products and specialized software.

User Support provides student lab assistants who take care of basic problems and maintain the computer labs located throughout campus that provide technology as needed for the completion of course requirements. Drop-in areas are dispersed in dorms and academic buildings, and are connected to the Internet with high speed fiber optics and wireless hubs throughout campus. See <http://www.marywood.edu/helpdesk/> for specifics on software, documentation, lab locations and hours as well as other aspects of OIT user support.

Application Programming Services

Application Programming Services supports administrators and staff in management and student services, and gives ongoing technical and staff support for effective data and process operations. This includes programming for over 5,000 applications that manage the University's business functions, such as registration, paying tuition fees, and viewing course requirements on line.

Network and System Administration

Marywood University is committed to providing high quality, usable technology for its students, faculty and staff, including access to the Internet and World Wide Web, and sharing institutional data, as appropriate, in a real-time, on-line environment. The Marywood data infrastructure began in 1987 and continues to grow with added fiber optic backbone, voice, data and video wiring, desktop and laptop computers, midrange computers, the campus-wide information system (CWIS), computer labs, networks operating under the client-server architecture, gateways to the Internet and World Wide Web, multi-media instruction and demonstration theaters.

The fiber optic backbone connects all major classroom, administrative buildings, and residence halls. Nineteen buildings are wired for voice, data and video with wireless capabilities widespread throughout the campus. Users regularly access the Internet through 220 MB of internet connectivity. Over six hundred student computers connect to our network in dorms.

Academic Computing

This division advises and assists faculty in the use of information technology for the creation, organization, analysis, and presentation of scholarly, scientific, and curricular resources. In courses using the learning management system called Moodle, syllabi, course information, chat, assignment, and test capabilities are all on line. In helping to drive the technology evolution on

campus, Academic Computing trains faculty on the utilization of technology at hand and collaborates them to identify and find technical solutions to instructional needs.

Computer Labs

Throughout locations in every major building, the Office of Information Technology maintains 11 computer labs (12 to 21 computers per lab) that are used as classes or drop-in areas when not reserved for class. Also available are seventeen smaller drop-in labs for use by any student, faculty, or staff member. A 24/7 computing facility is located in our largest dormitory, Loughran Hall. Most labs are Windows-based PCs with Macintosh computers in buildings housing graphic arts or education. All have a high-speed Internet connection and Microsoft Office as well as a number of specialized programs as needed by various departments.

Peer-to-Peer Policy Statement

Marywood University prohibits Peer to Peer (P2P) network traffic from the campus network because of its widespread use in distributing illegal or copyrighted material. The Office of Information Technology reserves the right to remove any computer in question from the network entirely if it is found to be distributing or collecting illegal or copyrighted material, or using excessive amounts of network bandwidth to the detriment of other computers on the network.

Definitions

On the Internet, P2P is a type of transient Internet network that allows a group of computer users with the same networking program to connect with each other and directly access files from one another's hard drives. The files can include music, videos, photos, games and other files.

These P2P programs include, but are not limited to, BitTorrent, Limewire, Gnutella, Vuze, Ares and Ants. Marywood University blocks the use of peer-to-peer applications on all network segments. The use of these applications can expose considerable vulnerabilities. P2P networks have been used to distribute viruses, malware and corrupted or mislabeled files, a threat that can severely impact university operations and online academic research. Malware exposure is a primary staging platform for identity and electronic financial theft.

Marywood University expects that all computers and networks on the campus will be used in a manner consistent with the Conditions of Computer Use Policy and compliant with applicable law. Marywood University is under no obligation to protect a user from a complaint or action arising from violation, or alleged violation, of the law. Users should understand that the fact that material is available for free on the Internet does not mean that accessing such material is authorized by third party rights-holders.

Marywood University prohibits the download and distribution of any copyrighted material, such as music, video, photos and software. Disproportionate bandwidth usage and copyright infringement are violations of the University's Conditions of Computer Use Policy.

Some Legal Alternatives for Downloading: AOL Music, ESPN360, Hulu Movies & TV, iTunes Movies, Music & TV, MTV Video, MySpace Music, Netflix Movies & TV, Pandora, VH1 Videos, Xbox Live Marketplace.

V. ACCREDITATIONS

Marywood University Accreditations/Approvals

Regional

Marywood University is accredited by the **Middle States Commission on Higher Education**,

3524 Market Street, Philadelphia, PA 19104

Phone: 267-284-5000

The Commission on Higher Education is the unit of the Middle States Association of Colleges and Schools that accredits degree-granting colleges and universities in the Middle States region, which includes Delaware, the District of Columbia, Maryland, New Jersey, New York, Pennsylvania, Puerto Rico, the U.S. Virgin Islands, and several locations abroad.

Professional

Business and Managerial Science Programs granting the B.B.A. Degrees at the Undergraduate Level and the M.B.A. and M.S. in Management Information System Degrees at the Graduate Level
Accreditation Council for Business Schools and Programs,
7007 College Boulevard, Suite 420, Overland Park, KS 66211
Phone: 913-339-9356

The Masters Degree in Physician Assistant Studies
Accreditation Review Committee on Education for the Physician Assistant, Inc.,
12000 Findley Road, Suite 240, Duluth, GA 30097
Phone: 770-476-1224

The Graduate Art Therapy Program of the Department of Art
American Art Therapy Association, Inc.,
5999 Stevenson Ave., Alexandria, VA 22304
Phone: 888-290-0878 or 1-703-212-2238

The Didactic Program, Coordinated Program, and Internship and Distance Internship Programs in the Nutrition and Dietetics Department
Commission on Accreditation for Dietetics Education, American Dietetic Association,
120 South Riverside Plaza, Suite 2000, Chicago, IL 60606
Phone: 312-899-4817 ext. 5400

The Masters Program in Speech-Language Pathology
Council on Academic Accreditation, American Speech-Language-Hearing Association,
10801 Rockville Pike, Rockville, MD 20852
Phone: 800-498-2071

The Athletic Training Program in the Health and Physical Education Department
Commission on Accreditation of Athletic Training Education,
2201 Double Creek Drive, Suite 5006, Round Rock, TX 78664
Phone: 512-733-9700

Counseling Programs in Elementary Counseling, Secondary School Counseling and Mental Health Counseling
Council for Accreditation of Counseling and Related Educational Programs,
5999 Stevenson Avenue, Alexandria, VA 22304
Phone: 703-823-9800 ext. 301

The Masters and Baccalaureate of Social Work degree programs in the School of Social Work and Administrative Studies
Council on Social Work Education,
1725 Duke Street, Suite 500, Alexandria, VA 22314
Phone: 703-683-8080

Programs in Art and Design of the Department of Art
National Association of Schools of Art and Design,
11250 Roger Bacon Drive, Suite 21, Reston, VA 20190
Phone: 703-437-0700

Programs in Music
National Association of Schools of Music,
11250 Roger Bacon Drive, Suite 21, Reston, VA 20190
Phone: 703-437-0700

Programs for the preparation of elementary, secondary, K-12 and special education teachers and for the preparation of other school personnel including school psychologists, guidance counselors, principals, superintendents, librarians, reading specialists, speech and language pathologists, home school visitors, and supervisory personnel
National Council for Accreditation of Teacher Education,
2010 Massachusetts Ave NW, Suite 500,
Washington, DC 20036
Phone: 202-466-7496

The Graduate and Undergraduate Department of Nursing
National League for Nursing Accrediting Commission,
3343 Peachtree Road NE, Suite 850, Atlanta, GA 30326
Phone: 1-800-669-1656

The Doctor of Psychology (Psy.D.) program in Clinical Psychology is accredited as a doctoral program in clinical psychology by the **American Psychological Association (APA)**, Office of Program Consultation and Accreditation,
750 First Street, NE, Washington, DC 20002-4242
Phone: 202-336-5979

VI. STRATEGIC PLAN GOALS AND OBJECTIVES

Marywood University

STRATEGIC PLAN GOALS AND OBJECTIVES 2010 - 2015

- GOAL 1: Create both academic and physical infrastructure to provide a learning environment that enables students to succeed academically and professionally.**
- Objective A:** *Enhance the quality of the Marywood educational experience.*
 - Objective B:** *Enhance and promote Marywood University's academic reputation.*
 - Objective C:** *Continue to expand research opportunities for faculty and students.*
 - Objective D:** *Improve physical environment for delivering instruction, conducting research, and accommodating alternative learning styles.*
- GOAL 2: Create a culturally diverse and global educational experience to educate students to live responsibly in a diverse and interdependent world.**
- Objective A:** *Increase the number of culturally diverse students, faculty, and staff.*
 - Objective B:** *Enhance curriculum to reflect the current global perspective.*
 - Objective C:** *Develop more sensitive and positive attitudes and behaviors toward cultural diversity by faculty, staff and students including attention to providing a welcoming and supportive campus.*
 - Objective D:** *Increase opportunities for study abroad and other cultural exchange experiences for students and faculty.*
- GOAL 3: Align resources to achieve institutional goals, with a focus on environmental stewardship.**
- Objective A:** *Improve information services and access for students, faculty, staff, and external audiences.*
 - Objective B:** *Improve financial position through revenue enhancement activity.*
 - Objective C:** *Improve the quality and efficiency of infrastructure.*
 - Objective D:** *Align human resource initiatives to institutional goals.*
 - Objective E:** *Create a campus-wide initiative to implement Sustainable Design Practices in all building and campus maintenance and operations, building renovations, and new construction.*