



Faculty Development Committee

Introduction

University Standing Committees

Policy

Descriptions

Alphabetical List

Reporting List

Members

Annual Reports

Annual Report for 2005 - 2006

Members:

- Dr. David Renjilian (Chair), At-large representative
- Dr. Ron Bulbulian, Dean, College of Health and Human Services
- Dr. Mary Anne Fedrick, Dean, College of Education and Human Development
- Dr. Lou Furmanski, Dean, College of Liberal Arts and Sciences
- Dr. Devorah Namm, Dean, College of Creative Arts and Management
- Dr. Jan Bisset, CEHD representative
- Dr. Arthur Comstock, CCAM representative
- Dr. Marianne Borja, CHHS representative
- Dr. Michael Fuchs, CLAS representative
- Dr. Deborah Brassard, At-large representative

Meetings

Eight meetings were held between September 1, 2005 and May 5, 2006.

Accomplishments

The committee reviewed 85 Faculty Development Proposals in the 2005 – 2006 academic year. Faculty Development Plans and Profiles, Sabbatical Applications, and Applications for Release Time for Scholarship were also reviewed. The committee web site developed two years ago (www.marywood.edu/faudev) was revised to include changes to guidelines, updated downloadable forms, and new dates of submission deadlines for various materials.

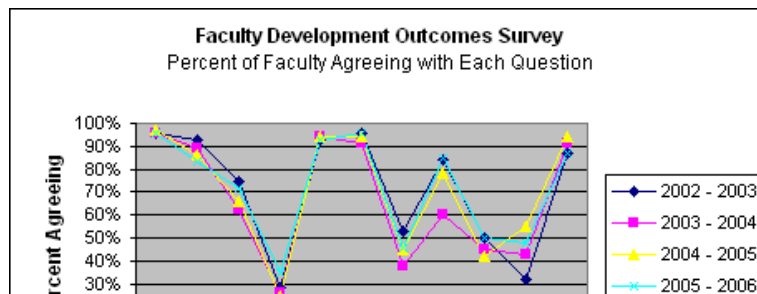
Number Receiving Funds

The committee received 85 Proposals for funding, a decrease over the 94 received last year, but consistent with prior years (e.g., 81 requests were received in 2004 – 2005). There were no group proposals. Overall, 47% of all full-time and pro-rata faculty received support from Faculty Development, consistent with the usage rate of 46% last year.

Outcomes data

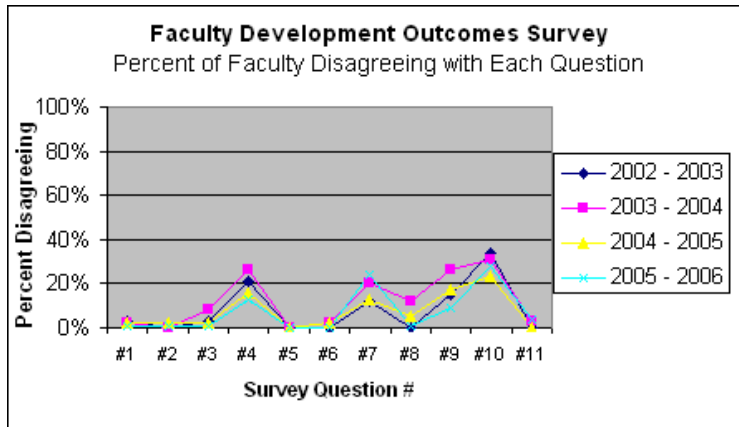
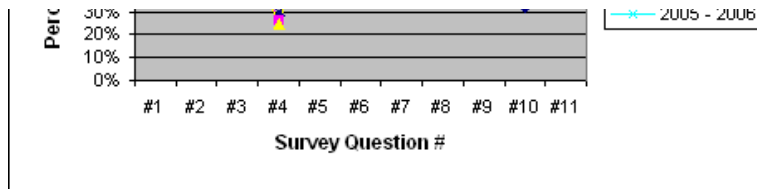
For the fourth year, the committee collected outcomes data from faculty funded through Faculty Development. For the 85 requests received, 46 surveys were completed representing a return rate of 54%. This compliance rate is below that of previous years. The survey asks faculty to rate 11 questions using a 5-point Likert type scale. The table below reports the data using the “high-two box/low-two box” method. This involves reporting the percentage of respondents who rated each item as true (4 or 5 on the scale) or not true (1 or 2 on the scale). The survey questions and the resulting statistics are presented on the following page.

Survey Question	Percent endorsing “true”	Percent endorsing “not true”
1. During my professional activity I had the opportunity to interact with colleagues.	96	1
2. I have the opportunity to apply what I learned during my professional activity to my teaching.	83	1
3. As a result of my professional activity I have the opportunity to apply the feedback I received to future scholarship or creative endeavor (such as the advancement of a manuscript).	72	1
4. My professional activity gave me the opportunity to earn credits toward certification, licensure or a degree.	35	13
5. My professional activity will help me to broaden my horizons as a teacher or scholar.	93	0
6. My activity enhanced my interest in an important aspect of my professional life.	96	0
7. My activity helped me to develop a new professional interest.	46	24
8. My activity allowed me to make a contribution to my discipline or profession.	85	1
9. My activity enabled me to share professional ideas with an international audience.	50	9
10. The funding I received was sufficient to cover the costs of the activity.	48	28
11. I am satisfied with the process of applying for Faculty Development funds	87	4



Data Trends

As evidenced by the following graphs, faculty responses have been fairly consistent over the past four years.



Submitted by

Dr. David Renjilian
Faculty Development Chairperson.

July 20, 2006

MARYWOOD UNIVERSITY
UNIVERSITY STANDING COMMITTEES
Go to [top of this page](#) - [Alphabetical List](#) - [Reporting List](#)

Dolores M. Filicko, IHM
Secretary of the University

Search for

[Site Search](#)

[| Academics](#) | [| Admissions](#) | [| Library](#) | [| Student Services](#) | [| Athletics & Recreation](#) | [| News & Events](#) | [| About Marywood](#) |

[| Prospective Students](#) | [| Current Students](#) | [| Alumni & Friends](#) | [| Faculty, Staff, Administration](#) | [| Media](#) |

[| Campus Services](#) | [| Contact Information](#) | [| E-Mail](#) | [| Request Information](#) | [| Index](#)

[| Campus Map/Tour](#) | [| Marywood Cam](#) | [| Positions Available](#) | [| Webmaster's Corner](#) |

Apply Today! [Undergraduate](#) -- [Master's](#) -- [Ph.D.](#) -- [Psy.D.](#)

[Return to](#)

[Marywood's Home Page](#)

Last update July 20, 2006
Copyright © 2005 by Marywood University. All rights reserved.