



Marywood

UNIVERSITY



FACT BOOK 2008-2009

Office of Planning and Institutional Research

November 2008



Mission Statement

A Catholic university sponsored by the Congregation of the Sisters, Servants of the Immaculate Heart of Mary, Marywood University roots itself in the principle of justice and a belief that education empowers people. Enacting its ideals, Marywood offers students a welcoming and supportive community that encourages men and women of all backgrounds to shape their lives as leaders in service to others. Proud of its liberal arts tradition and host of professional disciplines, Marywood challenges students to broaden their understanding of global issues and to make decisions based on spiritual, ethical, and religious values. Marywood calls upon students to seek their full potential and invites all to engage in a lifelong process of learning. Witnessing the efficacy of teaching and scholarship, Marywood educates students to live responsibly in a diverse and interdependent world.

Front Cover: Recently renovated Madonna Hall student residence

MEMORANDUM

TO: Marywood University Colleagues

FROM: Dr. Ellen Boylan
Director of Institutional Research and Assessment

RE: *Fact Book 2008-2009*

DATE: November 2008

The Marywood University *Fact Book 2008-2009* offers concise tabular trend information on Marywood University students, personnel, finances and facilities. The annual *Fact Book* is assembled and published by the Office of Planning and Institutional Research, but there are many campus colleagues who contribute information each year, and we thank them.

The *Fact Book 2008-2009*, in the fourteenth year of publication, provides a consistent source of information on important institutional measures, and is produced in a format designed to be easily accessible to all members of the Marywood community. There are new entries this year on International Student majors (p.20), as well as expanded information on Honors Program offerings and Study Abroad sites (p.21). Also, computing and network services now appear within pages for the Office of Information Technology (OIT) (p.40-42). The report on Career Services, produced every other year, reappears in the next issue. We welcome your comments and suggestions for producing a *Fact Book* that has the most timely and useful information possible for the entire campus.

The *Fact Book* is publicly available for downloading and printing. For access, go to <http://www.marywood.edu/instresearch/Factbk.pdf>, the Marywood University Planning and Institutional Research web page.

The point person in the Office of Institutional Research for questions and comments on the *Fact Book 2008-2009* is Ms. Charlotte Woodward, Assistant Director of Institutional Research. Contact her at 570-348-6203 or by email at woodward@marywood.edu

/ld

TABLE OF CONTENTS

I STUDENTS

A.	Synopsis of Associate and Baccalaureate Degree Programs and Majors	1
B.	Synopsis of Graduate Degree Programs	3
C.	Degrees Granted by College and Department	5
D.	Admissions Activity	
1.	Undergraduate.....	8
♦	<i>Trends in Undergraduate Admissions Activity</i>	8
2.	Graduate.....	9
♦	<i>Graduate Admissions Funnel by College</i>	9
E.	Average SAT Scores for First-time Full-time Freshmen.....	10
♦	<i>Trends in SAT Scores of First-time Full-time Freshmen</i>	10
F.	Fall Headcount and FTE Enrollment by College and Time Status.....	11
G.	Fall Headcount Enrollment by College and Ethnicity	14
♦	<i>Trends in Total Undergraduate Enrollment</i>	15
♦	<i>Trends in Total Graduate Enrollment</i>	15
H.	Fall Headcount Enrollment by College, Department and Level.....	16
I.	Fall Headcount Enrollment by College and Gender	18
J.	Fall Undergraduate Enrollment by On/Off-Campus Living.....	19
K.	Students with Disabilities	19
L.	International Student Enrollment	
1.	By Country.....	20
2.	By Major	20
M.	Honors Program	
1.	Majors Represented in Honors Program.....	21
2.	Honors Courses Offered	21
N.	Study Abroad Program - Location and Majors of Students.....	21
O.	Retention and Graduation Rates	22
♦	<i>Trends in Freshman Class 1-Year Retention</i>	23
♦	<i>Trends in 6-year Graduation Rates of First-time Full-time Freshmen</i>	23
P.	Athletics and Recreation.....	24

II PERSONNEL

A.	Employees by Ethnicity, EEO Category and Time Status.....	25
B.	Full-time Employees by Gender and Ethnicity.....	26
C.	Faculty	
1.	Number of Full-time and Pro-rata Faculty.....	27
2.	Tenure Status Among Full-time Faculty.....	27
3.	Number of Full-time Faculty by Rank and Gender	28
4.	Number of Full-time Faculty with Terminal Degrees	28

IV	FINANCES	
	A.	Unrestricted Operating Revenues 29
	B.	Percent Distribution of Unrestricted Operating Revenues..... 30
	C.	Unrestricted Operating Expenditures..... 31
	D.	Percent Distribution of Unrestricted Operating Expenditures 31
	E.	Externally Sponsored Research as a Percentage of Unrestricted Operating Expenditures 32
	F.	Endowment, Quasi-Endowment and Other Long-Term Investments..... 32
	G.	Tuition, Fees and Room & Board Charges..... 33
	H.	Total Cost at Marywood and CICU Institutions 34
		♦ <i>Tuition and Fees: AICUP Comparison Group Average</i>
		<i>v. Marywood University</i> 35
	I.	Student Financial Aid 35
	J.	Total Gifts and Grants..... 36
	K.	Corporate/Foundation Relations Office Activity 36
	L.	Alumni Giving 36
	M.	Office of Research and Community Collaboration 36
	N.	Comparison of Gift Levels by Campaign Year 37
		♦ <i>Total Presidential Society Giving</i> 37
V	FACILITIES	
	A.	Land and Building Inventory 38
	B.	University Library..... 39
	C.	Office of Information Technology..... 40
VI	ACCREDITATIONS 43
VII	STRATEGIC PLAN GOALS AND OBJECTIVES 44

I. STUDENTS

Synopsis of Baccalaureate Degree Programs and Majors (Total 59)

BA Advertising and Public Relations	BA History-Social Science/ Secondary Education
BA Art Education	
BA Art Therapy	BA Musical Theatre
BA Arts Administration (Art)	BA Philosophy
BA Arts Administration (Corporate)	BA Religious Studies
BA Arts Administration (Music)	BA Spanish
BA Arts Administration (Theatre)	BA Spanish/Secondary Education
BA Communication Arts/Secondary Education (Nonprint Media)	BA Theatre
BA Communication Arts/Secondary Education (Theatre)	BArch Architecture
BA Comprehensive Social Sciences (General)	BBA Accounting
BA Comprehensive Social Sciences (Sociology)	BBA Aviation Management (Airport/Airline Management)
BA Criminal Justice	BBA Aviation Management (Professional Pilot/Flight Operations)
BA Digital Media and Broadcast Production (Broadcast)	BBA Computer Information and Telecommunications Systems
BA Digital Media and Broadcast Production (Corporate)	BBA Financial Planning
BA English	BBA Hospitality Management
BA English/Secondary Education	BBA International Business
BA French	BBA Management
BA French/Secondary Education	BBA Marketing
BA Health Services Administration (General)	BBA Retail Business Management
BA Health Services Administration (Gerontology)	BEDA Environmental Design - Architecture
BA History	BFA Design (Graphic Design)
BA History/Political Science	BFA Design (Interior Design)
BA History/Political Science (Pre-law)	BFA Design (Photography)
	BFA Studio Art (Ceramics)
	BFA Studio Art (Illustration)
	BFA Studio Art (Painting)
	BFA Studio Art (Sculpture)

Synopsis of Baccalaureate Degree Programs and Majors

(Continued)

BM	Music Education	BS	Elementary Education/Mathematics
BM	Music Performance	BS	Elementary Education/Music
BM	Music Therapy	BS	Elementary Education/Psychology
BS	Athletic Training	BS	Elementary Education/Religious Studies
BS	Biology	BS	Elementary Education/Science
BS	Biology (Pre-Chiropractic)	BS	Elementary Education/Social Science
BS	Biology (Pre-Professional)	BS	Elementary Education/Special Education
BS	Biology/Secondary Education	BS	Elementary Education/TESOL
BS	Biotechnology	BS	Environmental Science
BS	Communication Sciences and Disorders (Deaf Studies)	BS	Family and Consumer Science Education
BS	Communication Sciences and Disorders (Pre-Professional)	BS	General Science/Secondary Education
BS	Early Childhood Education	BS	Health and Physical Education (Education)
BS	Early Childhood Special Education	BS	Health and Physical Education (Physical Activity)
BS	Elementary Education/Art	BS	Health Sciences
BS	Elementary Education/ Communication Arts	BS	Mathematics
BS	Elementary Education/ Communication Disorders	BS	Mathematics/Secondary Education
BS	Elementary Education/Dance	BS	Medical Technology
BS	Elementary Education/Deaf Studies	BS	Nutrition and Dietetics
BS	Elementary Education/ Early Childhood Education	BS	Psychology
BS	Elementary Education/English	BS	Psychology (Clinical Practices)
BS	Elementary Education/ Foreign Languages	BS	Psychology (Industrial/Organizational)
BS	Elementary Education/ Health and Physical Education	BS	Special Education
BS	Elementary Education/History	BSN	Nursing – Pre-Service
		BSN	Nursing – RN
		BSW	Social Work

Total Undergraduate Major Programs: 59

Synopsis of Graduate Degree Programs

(Total 35 Masters, 2 Doctoral)

MA	Art Education	MBA	Business Administration (General Management)
MA	Art Therapy		
MA	Communication Arts (Interdisciplinary)	MBA	Business Administration (Management Information Systems)
MA	Communication Arts (Media Management)	MEd	Instructional Leadership
MA	Communication Arts (Production)	MFA	Visual Arts (Advertising Design)
MA	Mental Health Counseling (Addictions)	MFA	Visual Arts (Clay)
MA	Mental Health Counseling (General)	MFA	Visual Arts (Fibers)
MA	Mental Health Counseling (Pastoral)	MFA	Visual Arts (Graphic Design)
MA	Music Education	MFA	Visual Arts (Illustration)
MA	Professional Studies	MFA	Visual Arts (Metals)
MA	Psychology (Child Clinical/School)	MFA	Visual Arts (Painting)
MA	Psychology (Clinical Services)	MFA	Visual Arts (Photography)
MA	Psychology (General Theoretical)	MFA	Visual Arts (Printmaking)
MA	Studio Art (Advertising Design)	MHSA	Health Services Administration (Long Term Care Management)
MA	Studio Art (Ceramics)	MHSA	Health Services Administration (Managed Care)
MA	Studio Art (Clay)	MMT	Music Therapy
MA	Studio Art (Graphic Design)	MPA	Public Administration
MA	Studio Art (Illustration)	MPA	Public Administration (Criminal Justice)
MA	Studio Art (Interior Architecture)	MPA	Public Administration (Nonprofit Management)
MA	Studio Art (Painting)		
MA	Studio Art (Photography)	MS	Biotechnology
MA	Studio Art (Printmaking)	MS	Clinical Physician Assistant
MA	Studio Art (Sculpture)	MS	Counselor Education-Elementary
MA	Studio Art (Weaving)	MS	Counselor Education-Secondary
MArch	Architecture	MS	Criminal Justice
MAT	Elementary Education	MS	Early Childhood Intervention
MAT	Secondary/K-12 Education	MS	Gerontology
MBA	Business Administration (Finance and Investments)	MS	Higher Education Administration

Synopsis of Graduate Degree Programs

(Continued)

MS	Information Sciences (Corporate Communication)	MS	Special Education Administration and Supervision
MS	Information Sciences (e-Business)	MS	Speech-Language Pathology
MS	Information Sciences (Health Communication)	MS	Sports Nutrition and Exercise Science
MS	Information Sciences (Instructional Technology)	MSW	Social Work
MS	Information Sciences (Library Science/Information Specialist)	EdS	School Psychology
MS	Kinesiology	PhD	Human Development
MS	Management Information Systems	PhD	Human Development (Educational Administration)
MS	Nursing Administration	PhD	Human Development (Health Promotion)
MS	Nutrition	PhD	Human Development (Higher Education Administration)
MS	Physician Assistant Studies	PhD	Human Development (Instructional Leadership)
MS	Reading Education	PhD	Human Development (Social Work)
MS	School Leadership	PhD	Human Development (Social Work)
MS	Special Education	PsyD	Clinical Psychology

Total Masters Degree Programs: 35
Educational Specialist Degrees: 1
Total Doctoral Degrees: 2, with 5 PhD tracks

**Degrees Granted by College and Department
July 1, 2003 to June 30, 2008**

Insalaco College of Creative Arts and Management

	<u>2003-04</u>	<u>2004-05</u>	<u>2005-06</u>	<u>2006-07</u>	<u>2007-08</u>
Art					
B.A.	7	17	18	19	20
B.F.A.	43	42	50	54	34
M.A.	8	5	5	15	22
M.F.A.	8	16	22	11	20
Business and Managerial Science					
B.B.A.	29	34	39	33	40
B.S.	1	0	0	0	1
M.B.A.	17	17	12	11	15
M.S.	4	1	1	0	0
Communication Arts					
B.A.	19	22	23	24	20
M.A.	3	11	18	8	14
M.S.	3	5	6	8	12
Music					
B.A.	3	1	2	1	3
B.M.	11	12	13	11	16
M.A.	3	1	1	5	1
Ad Hoc					
B.A.	0	0	0	1	0
Total Bachelor's	113	128	145	143	134
Total Master's	46	56	65	58	84

Reap College of Education and Human Development

Communication Science and Disorders					
B.S.	13	14	18	14	7
MS	12	9	19	12	23
Counseling/Psychology					
B.S.	26	20	28	26	24
M.A.	19	26	23	29	27
M.S.	11	10	8	15	12
Ed.S.	0	0	0	6	7
Psy.D.	0	0	0	1	6
Education					
B.S.	23	29	24	26	31
M.A.T.	25	16	13	17	11
M.Ed.	1	2	2	0	1
M.S.	16	15	23	14	14
Human Development					
Ph.D.	11	13	18	16	8
Special Education					
B.S.	11	14	20	5	8
M.S.	43	48	29	19	11
Total Bachelor's	73	77	90	71	70
Total Master's	127	126	117	106	99
Total Educational Specialist	0	0	0	6	7
Total Doctoral	11	13	18	17	14

**Degrees Granted by College and Department
July 1, 2003 to June 30, 2008**

(Continued)

College of Health and Human Services

	<u>2003-04</u>	<u>2004-05</u>	<u>2005-06</u>	<u>2006-07</u>	<u>2007-08</u>
Health and Physical Education					
B.S.	13	14	17	18	17
Nursing/Public Administration					
B.A.	1	0	1	1	0
B.S.	0	0	1	0	0
B.S.N.	6	15	19	25	33
M.H.S.A.	2	5	10	4	5
M.P.A.	8	9	9	8	6
M.S.	3	3	1	3	3
Nutrition and Dietetics					
B.S.	9	17	16	20	21
M.S.	5	8	6	9	3
Physician Assistant					
B.S.	14	25	5	9	8
M.S.	0	0	15	29	29
Social Work					
B.S.W.	15	8	11	10	13
M.S.W.	129	154	93	104	118
Ad Hoc					
B.S.	1	0	0	0	0
Total Bachelor's	59	79	70	83	92
Total Master's	147	179	134	157	164

College of Liberal Arts and Sciences

English					
B.A.	21	18	17	27	20
Foreign Languages					
B.A.	2	2	2	4	5
Mathematics					
B.S.	2	6	5	1	1
Religious Studies					
B.A.	3	1	2	0	1
Science					
B.S.	12	14	12	23	10
M.S.	0	0	0	0	7
Social Sciences					
A.A.	4	0	0	0	0
B.A.	16	22	31	24	22
M.S.	3	3	4	3	10
Total Associate's	4	0	0	0	0
Total Bachelor's	56	63	69	79	59
Total Master's	3	3	4	3	17

Off Campus Degree Program

B.S.	0	2	4	0	0
------	---	---	---	---	---

Degrees Granted by College and Department
July 1, 2003 to June 30, 2008
(Continued)

University Overall

	<u>2003-04</u>	<u>2004-05</u>	<u>2005-06</u>	<u>2006-07</u>	<u>2007-08</u>
Total Associate's Awarded	4	0	0	0	0
Total Bachelor's Awarded	301	349	378	376	355
Total Master's Awarded	324	364	320	324	364
Total Educational Specialist Awarded	0	0	0	6	7
Total Doctoral Awarded	11	13	18	17	14
Total All Degrees Awarded	639	726	716	723	740

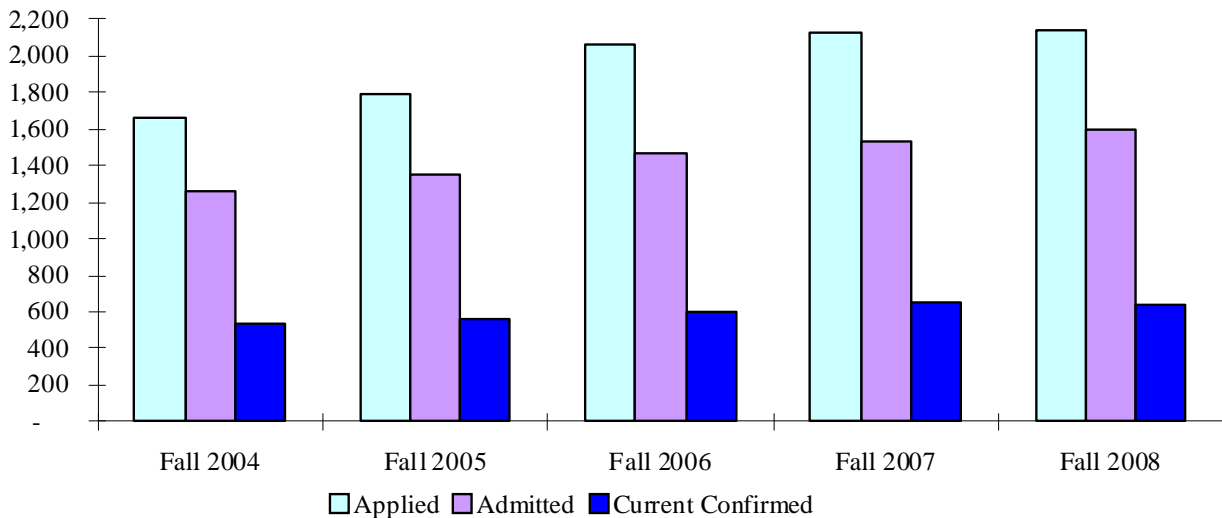
Admissions Activity

Undergraduate

Fall Full- and Part-time New Students

	2004	2005	2006	2007	2008	2004-08 % change
Applied	1,660	1,788	2,058	2,121	2,139	28.9
Freshman	1,377	1,441	1,707	1,756	1,774	28.8
Transfer	256	329	342	356	356	39.1
Other	27	18	9	9	9	(66.7)
Offered Admission	1,262	1,349	1,471	1,534	1,604	27.1
Freshman	1,050	1,104	1,257	1,289	1,377	31.1
Transfer	191	230	209	241	222	16.2
Other	21	15	5	4	5	(76.2)
Offer Rate	76.0%	75.4%	71.2%	72.3%	75.0%	
Freshman	76.3%	76.6%	73.6%	73.4%	77.6%	
Transfer	74.6%	69.9%	61.1%	67.7%	62.4%	
Other	77.8%	83.3%	55.6%	44.4%	55.6%	
Current Confirmed	542	559	608	651	641	18.3
Freshman	394	393	462	478	487	23.6
Transfer	134	157	142	169	150	11.9
Other	14	9	4	4	4	(71.4)
Yield Rate	42.9%	41.4%	41.3%	42.4%	40.0%	
Freshman	37.5%	35.6%	36.8%	37.1%	35.4%	
Transfer	70.2%	68.3%	67.9%	70.1%	67.6%	
Other	66.7%	60.0%	80.0%	100.0%	80.0%	

Trends in Undergraduate Admissions Activity Fall 2004 to Fall 2008



Admissions Activity

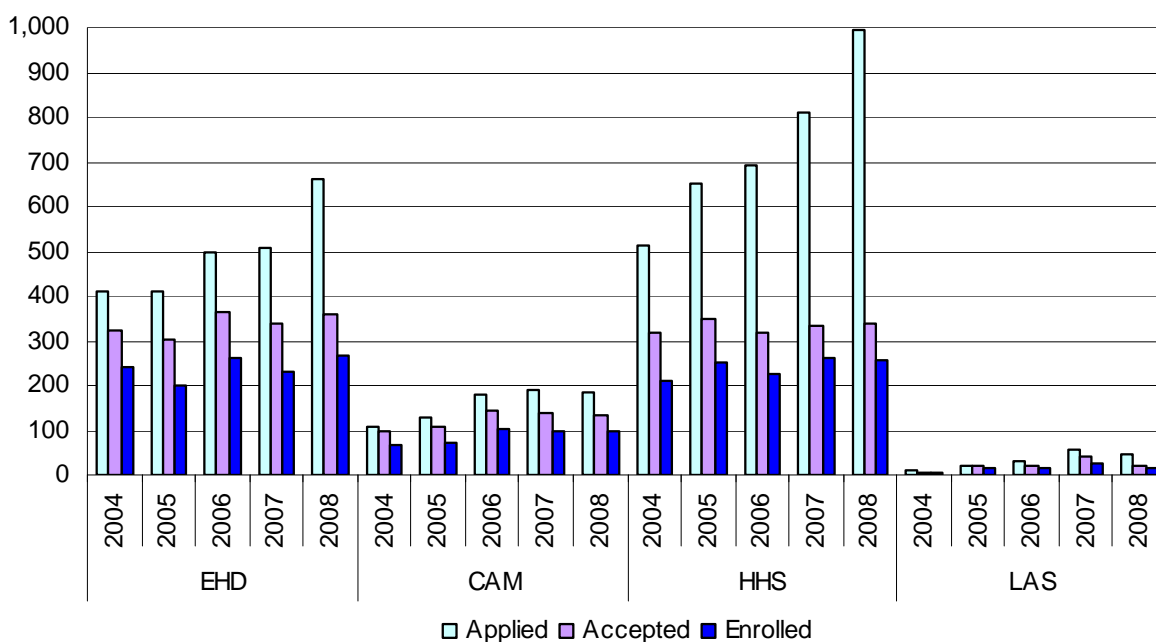
(continued)

Graduate

Full- and Part-time New Students (by calendar year)

	2004	2005	2006	2007	2008	2004-08 % change
CAM						
Applied	108	129	180	188	183	69.4
Accepted	95	109	145	137	135	42.1
Enrolled	65	72	103	100	99	52.3
EHD						
Applied	412	412	499	506	660	60.2
Accepted	321	302	366	337	357	11.2
Enrolled	242	202	264	231	269	11.2
HHS						
Applied	515	652	694	811	993	92.8
Accepted	320	351	316	334	338	5.6
Enrolled	210	252	225	259	257	22.4
LAS						
Applied	10	19	32	57	47	370.0
Accepted	6	19	19	42	19	216.7
Enrolled	3	16	14	28	14	366.7
TOTAL						
Applied	1,045	1,212	1,405	1,562	1,883	80.2
Accepted	742	781	804	850	849	14.4
Enrolled	520	542	606	618	639	22.9

Graduate Admissions Funnel by College 2004 - 2008

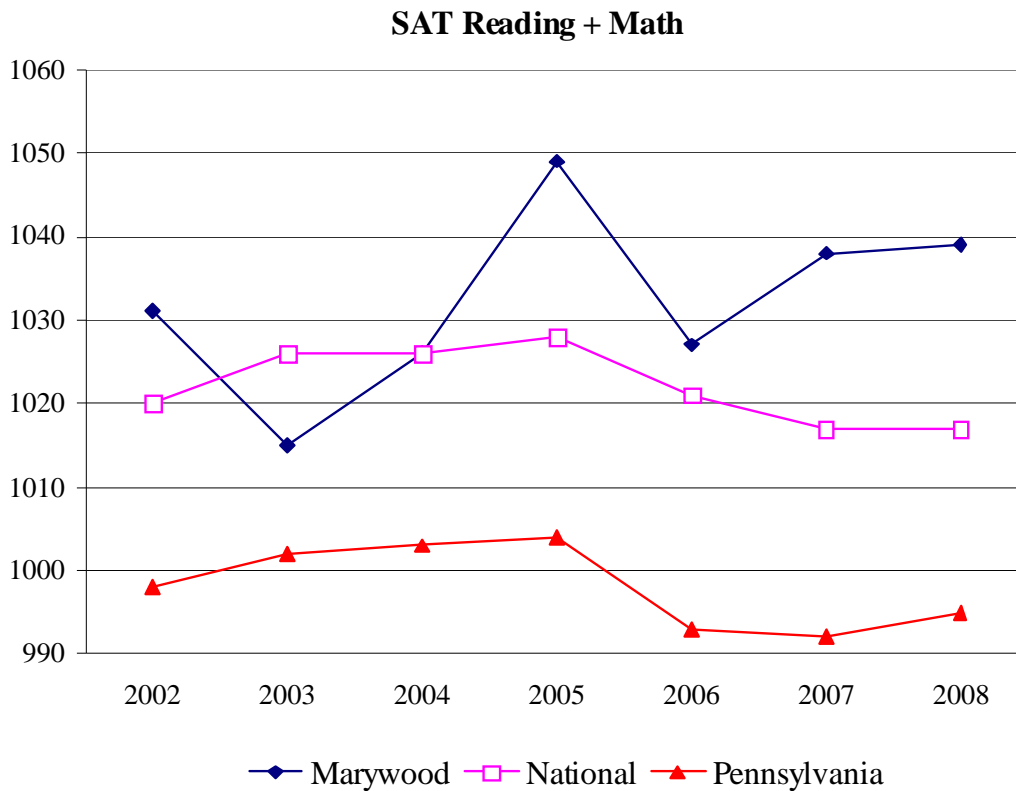


Average SAT Scores for First-time Full-time Freshmen

	Critical Reading*	Math	Reading + Math	Writing
Fall '02	525	506	1031	
Fall '03	518	498	1015	
Fall '04	524	503	1026	
Fall '05	527	521	1049	
Fall '06	513	514	1027	
Fall '07	521	517	1038	512
Fall '08	522	518	1039	510

* Prior to Fall 2007, old SAT Verbal score

Trends in SAT Scores of First-time Full-time Freshmen



Fall Headcount and FTE* Enrollment by College and Time Status

Insalaco College of Creative Arts and Management

	2004	2005	2006	2007	2008	2004-08 % Change
Undergraduate						
FT	599	624	621	655	700	16.9
PT	<u>63</u>	<u>52</u>	<u>41</u>	<u>47</u>	<u>54</u>	<u>(14.3)</u>
Total	662	676	662	702	754	13.9
FTE – Internal	623.4	645.6	637.4	673.8	719.2	
FTE – IPEDS	620.0	641.3	634.7	670.7	718.0	
Graduate						
FT	48	43	58	66	71	47.9
PT	<u>155</u>	<u>152</u>	<u>154</u>	<u>163</u>	<u>140</u>	<u>(9.7)</u>
Total	203	195	212	229	211	8.0
FTE – Internal	102.4	96.7	116.3	127.8	125.0	
FTE – IPEDS	99.7	93.7	109.3	120.3	117.7	
Total						
FT	647	667	679	721	771	19.2
PT	<u>218</u>	<u>204</u>	<u>195</u>	<u>210</u>	<u>194</u>	<u>(11.0)</u>
Total	865	871	874	931	965	11.6
FTE – Internal	725.8	742.3	753.6	801.7	844.2	
FTE – IPEDS	719.7	735.0	744.0	791.0	835.7	

Reap College of Education and Human Development

	2004	2005	2006	2007	2008	2004-08 % Change
Undergraduate						
FT	348	336	333	360	370	6.3
PT	<u>20</u>	<u>28</u>	<u>24</u>	<u>14</u>	<u>5</u>	<u>(75.0)</u>
Total	368	364	357	374	375	1.9
FTE – Internal	356.9	346.2	342.5	365.7	372.0	
FTE – IPEDS	354.7	345.3	341.0	364.7	371.7	
Graduate						
FT	173	171	183	180	199	15.0
PT	<u>445</u>	<u>393</u>	<u>377</u>	<u>346</u>	<u>342</u>	<u>(23.1)</u>
Total	618	564	560	526	541	(12.5)
FTE – Internal	327.3	312.0	321.9	303.1	321.6	
FTE – IPEDS	321.3	302.0	308.7	295.3	313.0	
Total						
FT	521	507	516	540	569	9.2
PT	<u>465</u>	<u>421</u>	<u>401</u>	<u>360</u>	<u>347</u>	<u>(25.4)</u>
Total	986	928	917	900	916	(7.1)
FTE – Internal	684.2	658.1	664.5	668.8	693.6	
FTE – IPEDS	676.0	647.3	649.7	660.0	684.7	

* FTE Internal = FT headcount + (PT credits/15 for undergraduate or PT credits/12 for graduate)
 FTE IPEDS = FT headcount + PT headcount/3

Fall Headcount and FTE* Enrollment by College and Time Status
(continued)

College of Health and Human Services

	2004	2005	2006	2007	2008	2004-08 % Change
Undergraduate						
FT	266	301	332	350	357	34.2
PT	<u>17</u>	<u>21</u>	<u>25</u>	<u>17</u>	<u>17</u>	<u>0.0</u>
Total	283	322	357	367	374	32.2
FTE – Internal	273.9	310.1	343.2	357.6	364.5	
FTE – IPEDS	271.7	308.0	340.3	355.7	362.7	
Graduate						
FT	249	270	270	276	277	11.2
PT	<u>237</u>	<u>252</u>	<u>222</u>	<u>245</u>	<u>246</u>	<u>3.8</u>
Total	486	522	492	521	523	7.6
FTE – Internal	353.6	379.0	367.8	383.3	385.2	
FTE – IPEDS	328.0	354.0	344.0	357.7	359.0	
Total						
FT	515	571	620	626	634	23.1
PT	<u>254</u>	<u>273</u>	<u>247</u>	<u>262</u>	<u>263</u>	<u>3.5</u>
Total	769	844	876	888	897	16.6
FTE – Internal	627.5	689.1	711.0	740.9	749.7	
FTE – IPEDS	599.7	662.0	684.3	713.3	721.7	

College of Liberal Arts and Sciences

	2004	2005	2006	2007	2008	2004-08 % Change
Undergraduate						
FT	383	399	446	470	495	29.2
PT	<u>48</u>	<u>41</u>	<u>32</u>	<u>37</u>	<u>41</u>	<u>(14.6)</u>
Total	431	440	478	507	536	24.4
FTE – Internal	403.9	411.4	458.7	485.6	509.8	
FTE – IPEDS	399.0	408.7	456.7	482.3	508.7	
Graduate						
FT	3	4	5	15	10	233.3
PT	<u>6</u>	<u>12</u>	<u>15</u>	<u>23</u>	<u>22</u>	<u>266.7</u>
Total	9	16	20	38	32	255.6
FTE – Internal	5.3	9.0	10.5	25.5	18.8	
FTE – IPEDS	5.0	8.0	10.0	22.7	17.3	
Total						
FT	386	403	451	485	505	30.8
PT	<u>54</u>	<u>53</u>	<u>47</u>	<u>60</u>	<u>63</u>	<u>16.7</u>
Total	440	456	498	545	568	29.1
FTE	409.1	424.4	469.2	511.1	528.6	
FTE – IPEDS	404.0	420.7	466.7	505.0	526.0	

* FTE Internal = FT headcount + (PT credits/15 for undergraduate or PT credits/12 for graduate)
FTE IPEDS = FT headcount + PT headcount/3

Fall Headcount and FTE* Enrollment by College and Time Status

(continued)

Registrar**

	2004	2005	2006	2007	2008	2004-08 % Change
Undergraduate						
FT	2	2	2	3	11	450.0
PT	<u>65</u>	<u>63</u>	<u>40</u>	<u>49</u>	<u>21</u>	<u>(67.7)</u>
Total	67	65	42	52	32	(52.2)
FTE – Internal	10.6	13.7	7.2	11.3	15.1	
FTE – IPEDS	23.7	23.0	15.3	19.3	18.0	

Total University

	2004	2005	2006	2007	2008	2004-08 % Change
Undergraduate						
FT	1,598	1,662	1,734	1,838	1,933	21.0
PT	<u>213</u>	<u>205</u>	<u>162</u>	<u>164</u>	<u>138</u>	<u>(35.2)</u>
Total	1,811	1,867	1,896	2,002	2,071	14.4
FTE – Internal	1,668.6	1,730.9	1,789.0	1,894.0	1,980.7	
FTE – IPEDS	1,669.0	1,730.3	1,788.0	1,892.7	1,979.0	
Graduate						
FT	473	488	516	537	557	17.8
PT	<u>843</u>	<u>809</u>	<u>768</u>	<u>777</u>	<u>750</u>	<u>(11.0)</u>
Total	1,316	1,297	1,284	1,314	1,307	(0.7)
FTE – Internal	788.5	796.7	816.5	839.7	850.5	
FTE – IPEDS	754.0	757.7	772.0	796.0	807.0	
Total						
FT	2,071	2,150	2,250	2,375	2,490	20.2
PT	<u>1,056</u>	<u>1,014</u>	<u>930</u>	<u>941</u>	<u>888</u>	<u>(15.9)</u>
Total	3,127	3,164	3,180	3,316	3,378	8.0
FTE – Internal	2,457.1	2,527.6	2,605.5	2,733.7	2,831.2	15.2
FTE – IPEDS	2,423.0	2,488.0	2,560.0	2,688.7	2,786.0	15.0

* FTE Internal = FT headcount + (PT credits/15 for undergraduate or PT credits/12 for graduate)

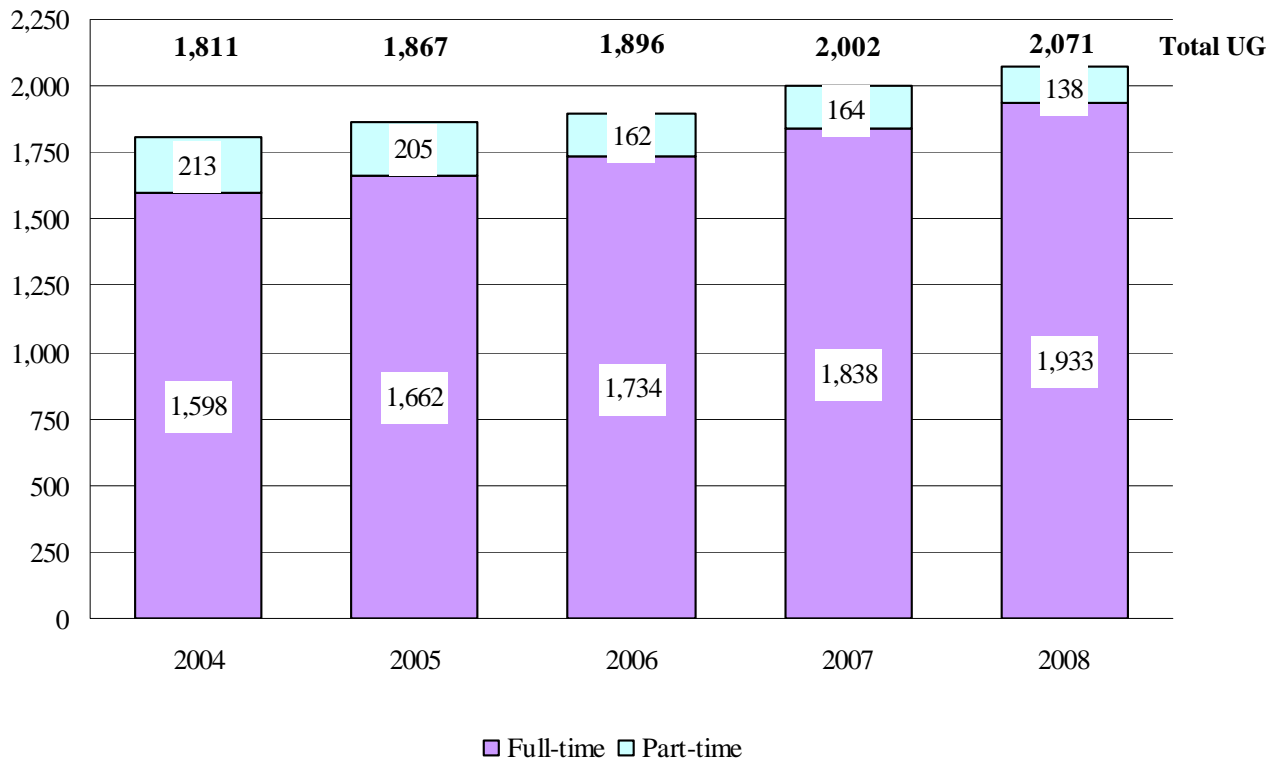
FTE IPEDS = FT headcount + (PT headcount/3)

**Continuing Education and OCPD were combined under Registrar in Fall 2007

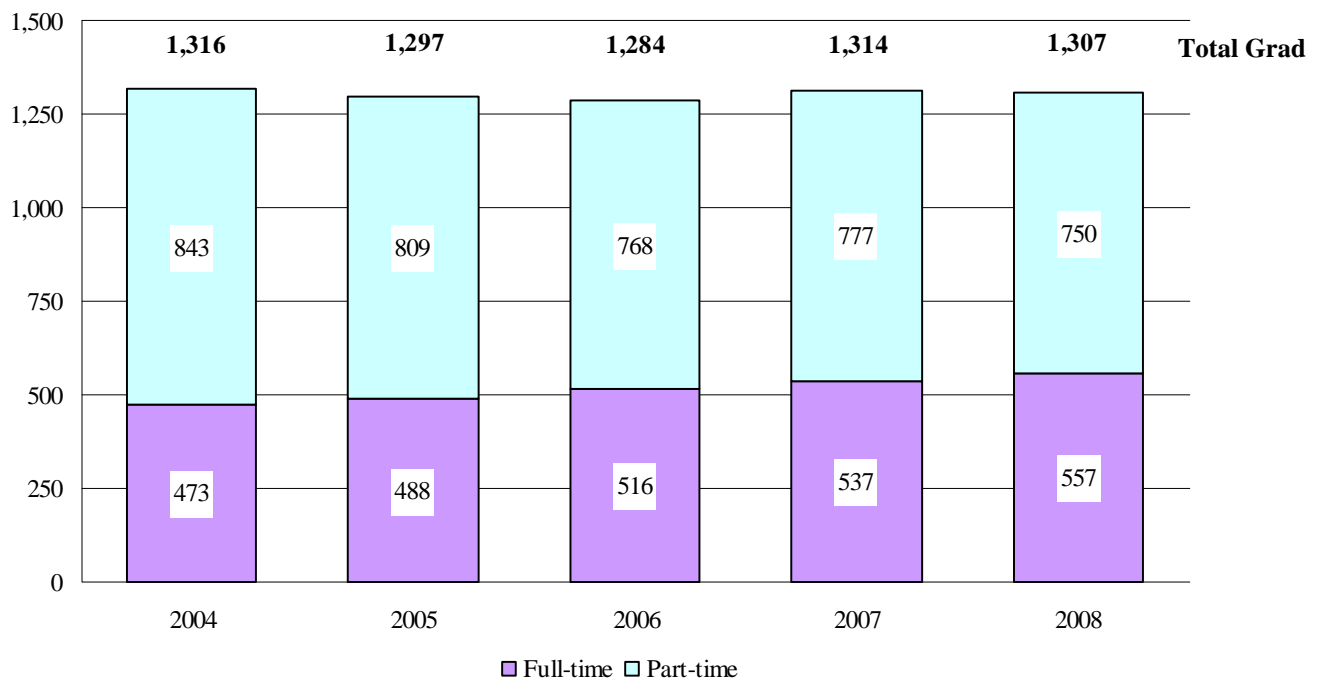
Fall Headcount Enrollment by College and Ethnicity

	2004	2005	2006	2007	2008	
Insalaco College of Creative Arts and Management						
Caucasian/No Response	804	808	793	840	870	90.2%
Other	43	50	65	76	79	8.2
Non-resident Alien	18	13	16	15	16	1.7
Reap College of Education and Human Development						
Caucasian/No Response	948	888	879	855	867	94.7
Other	33	37	31	36	42	4.6
Non-resident Alien	5	3	7	9	7	0.8
College of Health and Human Services						
Caucasian/No Response	715	774	769	804	822	91.6
Other	50	65	71	74	66	7.4
Non-resident Alien	4	5	9	10	9	1.0
College of Liberal Arts and Sciences						
Caucasian/No Response	406	414	447	495	513	90.3
Other	30	34	43	43	48	8.5
Non-resident Alien	4	8	8	7	7	1.2
Registrar						
Caucasian/No Response	46	43	26	39	21	65.6
Other	5	0	3	0	0	0.0
Non-resident Alien	16	12	13	13	11	34.4
TOTAL UNDERGRADUATE						
Caucasian/No Response	1,670	1,715	1,714	1,821	1,884	91.0
Other	102	119	146	148	154	7.4
Non-resident Alien	39	33	36	33	33	1.6
TOTAL GRADUATE						
Caucasian/No Response	1,249	1,222	1,199	1,212	1,209	92.5
Other	59	67	68	81	81	6.2
Non-resident Alien	8	8	17	21	17	1.3
TOTAL UNIVERSITY						
Caucasian/No Response	2,919	2,937	2,913	3,033	3,093	91.6
Other	161	186	214	229	235	7.0
Non-resident Alien	47	41	53	54	50	1.5

Trends in Total Undergraduate Enrollment Fall 2004 to Fall 2008



Trends in Total Graduate Enrollment Fall 2004 to Fall 2008



Headcount Enrollment by College, Department and Level – Fall 2004 to Fall 2008

		2004	2005	2006	2007	2008
Insalaco College of Creative Arts and Management						
Art	Undergraduate	293	336	319	239	364
	Graduate	87	79	90	89	97
Business	Undergraduate	177	180	180	225	236
	Graduate	45	39	51	58	43
Communication Arts	Undergraduate	99	83	86	70	82
	Graduate	48	53	49	52	46
Music	Undergraduate	91	69	67	67	65
	Graduate	7	9	12	12	14
Dean/Academic Advising	Undergraduate	2	8	10	11	7
	Graduate	16	15	10	18	11
Reap College of Education and Human Development						
Communication Disorders	Undergraduate	55	57	59	61	73
	Graduate	32	34	36	35	40
Counseling/Psychology	Undergraduate	111	114	111	115	118
	Graduate	142	148	176	170	168
Education	Undergraduate	106	111	112	127	123
	Graduate	203	180	172	162	187
Human Development	Graduate	98	99	90	90	93
Special Education	Undergraduate	52	45	25	30	23
	Graduate	82	51	52	33	33
Dean/Academic Advising	Undergraduate	44	37	50	41	38
	Graduate	61	52	34	36	20

Headcount by College, Department and Level – Fall 2004 to Fall 2008

(continued)

		2004	2005	2006	2007	2008
College of Health and Human Services						
Health & Physical Education	Undergraduate	74	73	87	93	99
	Graduate	0	0	0	0	8
Nursing/Public Admin	Undergraduate	81	102	123	121	122
	Graduate	57	56	47	49	52
Nutrition and Dietetics	Undergraduate	68	82	91	96	115
	Graduate	46	61	33	68	68
Physician Assistant	Undergraduate	0	2	0	8	0
	Graduate	40	67	41	44	43
Social Work	Undergraduate	44	45	47	43	36
	Graduate	318	304	307	329	328
Dean/Academic Advising	Undergraduate	16	18	9	6	2
	Graduate	25	34	39	31	24
College of Liberal Arts and Sciences						
English	Undergraduate	77	77	72	78	85
Foreign Languages	Undergraduate	11	15	19	20	14
Mathematics	Undergraduate	26	19	26	25	31
Philosophy	Undergraduate	0	0	0	0	2
Religious Studies	Undergraduate	2	2	3	4	4
Science	Undergraduate	85	100	124	155	174
	Graduate	---	---	4	14	8
Social Science	Undergraduate	128	129	122	120	130
	Graduate	6	14	13	20	18
Dean/Academic Advising	Undergraduate	102	98	112	105	96
	Graduate	3	2	3	4	6
Registrar						
	IEP	21	13	13	14	11
	Undergraduate	39	46	29	38	21
	Off-Campus Program	7	6	0	0	0

Headcount Enrollment by College and Gender

	2004	2005	2006	2007	2008	
Insalaco College of Creative Arts and Management						
Undergraduate						
Women	467	454	439	446	940	65.0%
Men	<u>195</u>	<u>222</u>	<u>223</u>	<u>256</u>	<u>264</u>	35.0
Total	662	669	662	702	754	
Graduate						
Women	131	130	136	165	141	66.8
Men	<u>72</u>	<u>65</u>	<u>76</u>	<u>64</u>	<u>70</u>	33.2
Total	203	195	212	229	211	
Reap College of Education and Human Development						
Undergraduate						
Women	321	309	303	324	321	85.6
Men	<u>47</u>	<u>55</u>	<u>54</u>	<u>50</u>	<u>54</u>	14.4
Total	368	364	357	374	375	
Graduate						
Women	491	442	447	426	429	79.3
Men	<u>127</u>	<u>122</u>	<u>113</u>	<u>100</u>	<u>112</u>	20.7
Total	618	564	560	526	541	
College of Health and Human Services						
Undergraduate						
Women	233	274	289	291	286	76.5
Men	<u>50</u>	<u>48</u>	<u>68</u>	<u>76</u>	<u>88</u>	23.5
Total	283	322	357	367	374	
Graduate						
Women	391	418	408	439	435	83.2
Men	<u>95</u>	<u>104</u>	<u>84</u>	<u>82</u>	<u>88</u>	16.8
Total	486	522	492	521	523	
College of Liberal Arts and Sciences						
Undergraduate						
Women	274	283	309	325	330	61.6
Men	<u>157</u>	<u>157</u>	<u>169</u>	<u>182</u>	<u>206</u>	38.4
Total	431	436	478	507	536	
Graduate						
Women	2	7	15	25	17	53.1
Men	<u>7</u>	<u>9</u>	<u>5</u>	<u>13</u>	<u>15</u>	46.9
Total	9	16	20	38	32	

(continued)

Headcount Enrollment by College and Gender

(continued)

	2004	2005	2006	2007	2008		
Registrar							
Undergraduate							
Women	42	41	27	38	22	68.8%	
Men	<u>25</u>	<u>24</u>	<u>15</u>	<u>14</u>	<u>10</u>		31.2
Total	67	65	42	52	32		
Total University							
Undergraduate							
Women	1,337	1,360	1,367	1,424	1,449	70.0	
Men	<u>474</u>	<u>506</u>	<u>529</u>	<u>578</u>	<u>622</u>	30.0	
Total	1,811	1,866	1,896	2,002	2,071		
Graduate							
Women	1,015	997	1,006	1,055	1,022	78.2	
Men	<u>301</u>	<u>300</u>	<u>278</u>	<u>259</u>	<u>285</u>	21.8	
Total	1,316	1,297	1,284	1,314	1,307		

Fall Full-time Undergraduate Enrollment by On/Off-Campus Living

	Fall 2004	Fall 2005	Fall 2006	Fall 2007	Fall 2008
On-Campus					
Freshmen	280	292	346	380	423
Total					
Women	493	525	580	659	694
Men	<u>158</u>	<u>152</u>	<u>179</u>	<u>214</u>	<u>246</u>
Total	651	677	759	873	940
Percent of Total Full-time	41%	41%	43%	47%	49%
Off-Campus					
Full-time					
Women	696	684	682	657	666
Men	<u>251</u>	<u>290</u>	<u>300</u>	<u>309</u>	<u>327</u>
Total	947	974	982	956	993
Part-time					
Women	143	141	105	70	89
Men	<u>58</u>	<u>56</u>	<u>50</u>	<u>41</u>	<u>49</u>
Total	201	197	155	111	138

Students with Disabilities

Academic Year 2008-09

Undergraduates: 123 (5.9%)

Graduates: 28 (2.1%)

Fall 2008 International Student Enrollment

By Country of Origin

Undergraduate:

Brazil	1	Nepal	2
Bulgaria	1	Nigeria	1
Costa Rica	1	Peru	1
Czech Republic	2	South Korea	6
Dominican Republic	1	Switzerland	1
India	1	Taiwan	4
Indonesia	2	Trinidad & Tobago	2
Israel	1	West Indies	1
Japan	4	Zimbabwe	1
Kenya	4		

Total Undergraduate: 33 (1.6%)

Graduate:

Bulgaria	2	Pakistan	1
China	1	Philippines	1
India	3	Taiwan	1
Indonesia	1	Tanzania	1
Jamaica	1	Turkey	2
Kenya	1	US Virgin Islands	1
Nigeria	1		

Total Graduate: 17 (1.3%)

By Major Course of Study

Undergraduate:

B {Und, program interest unspecified}	BS Biology/Secondary Education
BA Art Therapy	BS General Science/Secondary Education
BA Spanish	BS Health & Physical Education (Athletic Training)
BBA Computer Information and Telecommunications	BS Mathematics
BBA International Business	BS Psychology
BBA Management	BS Psychology (Industrial/ Organizational)
BM Music Performance	BSN Nursing - Pre-Service
BM Music Therapy	Intensive English Program
BS Biology	

Graduate:

MA Art Therapy	MS Biotechnology
MA Communication Arts (Media Management)	MS Kinesiology
MA Mental Hlth Couns (Pastoral)	MS Nutrition
MA Studio Art (Interior Architecture)	MS Sports Nutrition and Exercise Science
MBA Bus Adm (General Management)	Ph.D. Human Development (Higher Education Administration)
MFA Visual Arts (Graphic Design)	Ph.D. Human Development (Instructional Leadership)
MFA Visual Arts (Photography)	

Honors Program - Majors Represented

B (Pre-Physician Asst Studies)	BFA Studio Art (Illustration)
B (Undeclared, Interest Unspecified)	BS Biology (Pre-Professional)
BA Art Education	BS Biology/Secondary Education
BA Art Therapy	BS Communication Sciences and Disorders (Pre-Professional)
BA Arts Administration (Art)	BS Early Childhood Special Education
BA Criminal Justice	BS Elementary Education
BA English	BS Elementary Education/ECE
BA English/Secondary Education	BS Elementary Education/Math
BA History	BS Elementary Education/Music
BA History/Political Science (Pre-law)	BS Elementary Education/ Special Education
BA History-Social Science (Secondary Education)	BS Nutrition & Dietetics
BBA Accounting	BS Psychology
BBA Financial Planning	BS Psychology (Clinical Practice)
BBA Hospitality Management	BS Psychology (Industrial/Organizational)
BBA International Business	BS Special Education
BBA Management	
BFA Design (Graphic Design)	

Honors Courses Offered in 2008-2009

Fall 2008

ART	History of American Illustration
BUS	Money and Banking
ENGL	Writing Skills
HIST	Hunger in the 21 st Century
MUSC	History of Music I
PHIL	Introduction to Philosophy Philosophy of Art
PSY	General Psychology Developmental Psychology Contemporary Approaches to Learning Theories of Personality
R ST	Modern Belief

Spring 2009

ART	Art in the Modern Era
ENGL	Introduction to World Literature Early Modern British Women Writers
HIST	Global History of the Twentieth Century Women in the Developing World
PHIL	Introduction to Philosophy Biomedical Ethics
PSY	Developmental Psychology Psychology of Friendship and Peer Relations
R ST	Foundations of Christian Morality

124 students are currently enrolled in honors courses

Study Abroad Program - Locations and Majors of Students

James Cook University	BFA Design (Photography)	Queensland, Australia
University of New South Wales	BBA Aviation Mgt (PL/Flgt)	Sydney, Australia
University of New South Wales	BS Biotechnology	Sydney, Australia
University of Salzburg	BA English	Salzburg, Austria
Studio Arts Center International	BFA Studio Art (Painting)	Florence, Italy
Studio Arts Center International	BFA Design (Illustration)	Florence, Italy
American Institute for Foreign Study	BFA Design (Photography)	London, England
American Institute for Foreign Study	BA Criminal Justice	London, England

9 students are currently studying abroad

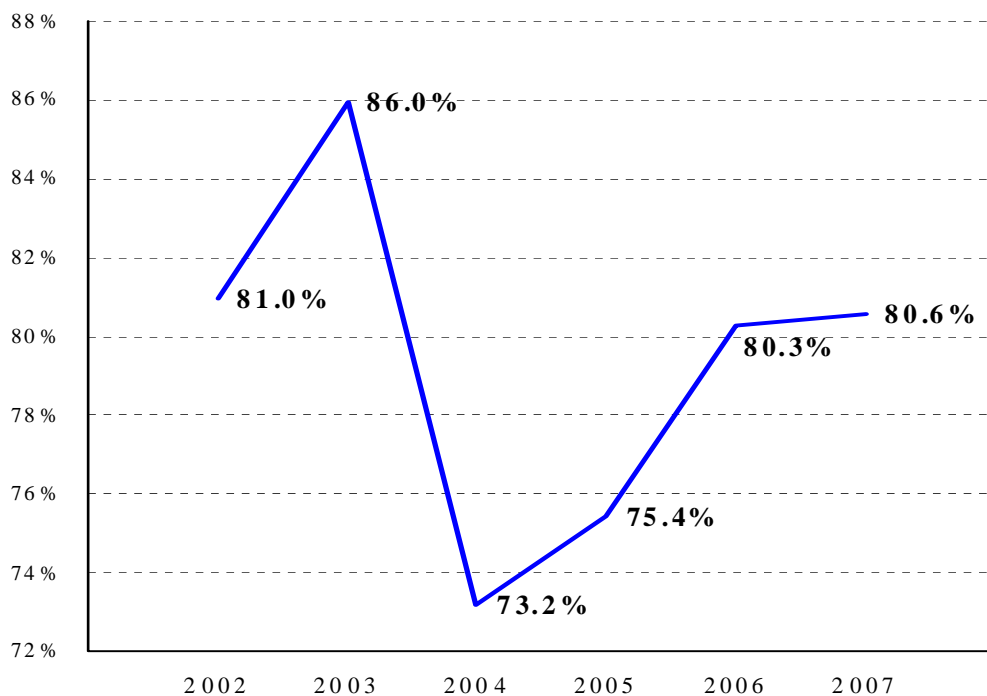
Retention and Graduation Rates for First-Time Full-Time Freshmen by Year of Entry - Fall 1997 to Fall 2008

Entering Fall Term	Retention Rates										Graduation Rates			
	1st Fall	2nd Fall	3rd Fall	4th Fall	5th Fall	6th Fall	7th Fall	8th Fall	within 4 yrs	within 5 yrs	within 6 yrs	within 7 yrs		
1997 N	276	216	186	177	72	8	3	3	103	163	168	171		
% enrollment	100%	78.3%	67.4%	64.1%	26.1%	2.9%	1.1%	1.1%	37.3%	59.1%	60.9%	62.0%		
1998 N	241	195	176	176	69	18	4	1	102	150	165	169		
% enrollment	100%	80.9%	73.0%	73.0%	28.6%	7.5%	1.7%	0.4%	42.3%	62.2%	68.5%	70.1%		
1999 N	282	225	194	184	70	12	7	2	118	171	180	183		
% enrollment	100%	79.8%	68.8%	65.2%	24.8%	4.3%	2.5%	0.7%	41.8%	60.6%	63.8%	64.9%		
2000* N	257	207	174	163	59	11	7	3	101	150	154	157		
% enrollment	100%	80.5%	68.2%	62.4%	23.0%	4.3%	2.7%	1.2%	39.3%	58.4%	59.9%	61.1%		
2001 N	287	225	200	191	78	9	2	1	114	170	178	180		
% enrollment	100%	78.4%	69.7%	66.6%	27.2%	3.1%	0.7%	0.3%	39.7%	59.2%	62.0%	62.7%		
2002 N	310	251	225	225	58	7	2		166	213	216			
% enrollment	100%	81.0%	72.6%	72.6%	18.7%	2.3%	0.6%		53.5%	68.7%	69.7%			
2003 N	278	239	210	203	45	6			152	188				
% enrollment	100%	86.0%	75.5%	73.0%	16.2%	2.2%			54.7%	67.6%				
2004 N	332	243	221	216	61				149					
% enrollment	100%	73.2%	66.6%	65.1%	18.4%				44.9%					
2005* N	301	227	201	193										
% enrollment	100%	75.4%	66.8%	64.1%										
2006 N	385	309	286											
% enrollment	100%	80.3%	74.3%											
2007* N	407	328												
% enrollment	100%	80.6%												
2008 N	422													
% enrollment	100%													

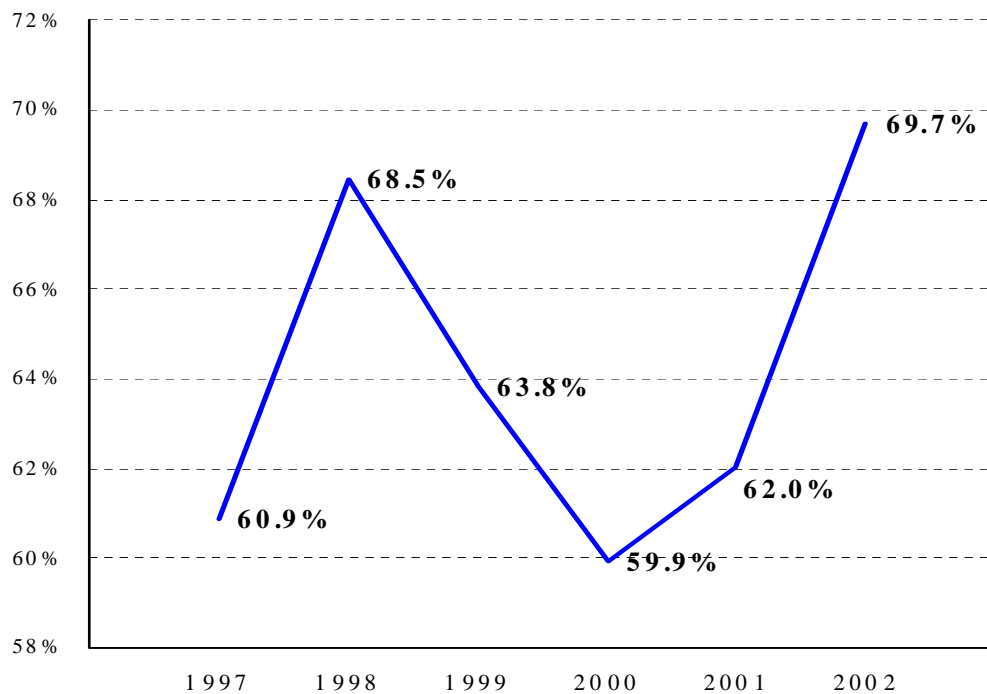
NOTE: Average graduation rate computed by Student Right to Know
(**SRK**) formula for 4-year programs is 64.1%

*1 student removed from cohort (death)

Trends in 1-Year Retention of First-year Full-time Freshmen Fall 2002 to Fall 2007 Cohorts



Trends in 6-Year Graduation Rates of First-year Full-time Freshmen Fall 1997 to Fall 2002 Cohorts



Athletics and Recreation

Marywood sponsors highly competitive intercollegiate teams in fourteen varsity sports. Marywood is a member of the National Collegiate Athletic Association (NCAA) Division III, and the Colonial States Athletic Conference (CSAC), formerly the Pennsylvania Athletic Conference (PAC). Marywood currently offers eight sports for females and six for males:

Female	Male
Basketball	Basketball
Cross Country	Cross Country
Soccer	Soccer
Softball	Baseball
Tennis	Tennis
Lacrosse	Lacrosse
Field Hockey	
Volleyball	

A diverse selection of coed intramural and club sports is available. Sponsored club sports have included golf, swimming, lacrosse, dance team, cheerleading and running. Intramural sports offer a wide range of physical activities. Traditional programs such as basketball, volleyball, flag football, tennis and softball are offered in addition to innovative programs such as Frisbee golf and walleyball. Recreation programs include land and water aerobic classes (free for students), karate club, special competitive events and physical activity organizations.

The new \$14 million dollar Robert J. Mellow Center for Athletics and Wellness opened in the Fall of 2006. The Mellow Center offers state-of-the-art fitness, recreation, and athletic opportunities and includes a premier fitness center, a climbing wall, an elevated running track, a dance/aerobic studio, an arena to showcase Pacer sports, and high tech athletic training areas. The Mellow Center compliments those activity areas within the current Health & Physical Education Center, which houses a 25-meter indoor swimming pool, recreation gym, and racquetball courts. Additional outdoor facilities include newly refurbished tennis courts, sand volleyball court, basketball courts, and three fields.

- Student Athlete Academic Honor Roll Participation:

Fall 2007	65
Spring 2008	47

- Intramural Participation:

Fall 2007	281
Spring 2008	225

- Athletic Honors/Achievements (1992-2008):
 - Team PAC Championships: 22
 - Women's Tennis: 1992, 1994, 1995, 1997, 1998, 1999, 2000, 2002, 2003
 - Men's Tennis: 1998, 2006
 - Field Hockey: 1992, 1993, 1998
 - Women's Cross Country: 1999, 2003, 2004, 2005, 2006, 2007
 - Softball: 1995
 - Volleyball; 1993
 - Team Conference Runners-up – 16
 - Conference Coach of the Year – 29
 - Conference Female Scholar Athlete of the Year – 2001, 2006, 2008
 - Conference Male Scholar Athlete of the Year – 2005
 - PAC All Conference Team Members

First Team – 164	Honorable Mention – 62
Second Team – 143	All Sportsmanship Team – 50
 - Women's Tennis Conference Player of the Year – 1999
 - Women's Soccer Conference Co-Rookie of the Year – 1999
 - Men's Cross Country Conference Individual Champion – 1998, 2000
 - Women's Soccer Conference Player of the Year – 2002
 - Women's Cross Country Conference Individual Champion – 2004, 2006
 - Women's Field Hockey Conference Player of the Year – 2001
 - Men's Tennis Conference Player of the Year – 2008
 - NCAA Post Graduate Scholarships – 2001, 2002, 2006

II. PERSONNEL

Employees by Ethnicity, EEO Category and Time Status

EEO-6 CATEGORY		04-05*	05-06**	06-07**	07-08**	08-09**
<u>Executive/Administrative/Managerial</u>						
Full-Time	White	36	37	36	37	42
	Other	2	2	3	2	2
Part-Time	White	0	0	1	2	2
<u>Faculty (instructional only)</u>						
Full-Time	White	124.75	125.25	123.5	124	127
	Other	5	8	8	8	10
Part-Time	White	165.54	166.54	166	180	181
	Other	9	8	9	10	9
<u>Professional (includes librarians)</u>						
Full-Time	White	83	84	95	108	104
	Other	5	5	4	6	5
Part-Time	White	40	48	47	38	28
	Other	1	1	0	1	1
<u>Secretarial/Clerical</u>						
Full-Time	White	117	109	114	114	103
	Other	1	1	1	1	3
Part-Time	White	23	29	35	24	24
	Other	1	5	0	2	5
<u>Technical/Paraprofessional</u>						
Full-Time	White	22	23	23	23	24
Part-Time	White	6	11	14	14	7
	Other	2	3	0	3	3
<u>Skilled Craft</u>						
Full-Time	White	16	18	18	18	21
<u>Service/Maintenance</u>						
Full-Time	White	80	81	82	89	84
	Other	0	1	1	0	0
Part-Time	White	16	17	17	16	13
	Other	0	3	2	0	0
Total						
Full-Time	White	478.75	477.25	491.5	513	505
	Other	13	17	17	17	20
Part-Time	White	250.54	271.54	280	274	255
	Other	13	20	11	16	18

* Data as of end of December

** Data as of end of September

Full-time Employees by Gender and Ethnicity

EEO-6 CATEGORY	04-05*		05-06**		06-07		07-08		08-09	
	M	F	M	F	M	F	M	F	M	F
<u>Executive/Administrative/Managerial</u>										
White	15	21	15	22	14	22	16	21	20	22
Black	1	0	1	0	1	0	0	0	0	0
Asian/Pacific Islander	0	1	0	1	0	1	0	0	0	0
Amer Ind/Alaskan Native	0	0	0	0	0	1	0	1	0	1
Other	0	0	0	0	0	0	1	0	1	0
<u>Faculty (instructional only)</u>										
White	54.5 ^A	70.3	51.5	73.8	52.3	71.3	54	70	48	68
Black	1	1	1	0	2	0	2	0	2	0
Hispanic	2	1	2	1	1	0	1	0	1	1
Asian/Pacific Islander	0	0	3	1	4	0	4	1	4	2
<u>Professional (includes librarians)</u>										
White	15	68	15	69	14	81	18	90	20	84
Black	0	1	0	1	0	1	1	1	0	1
Hispanic	2	0	2	0	1	0	1	0	0	0
Asian/Pacific Islander	1	1	1	1	1	1	1	2	1	3
<u>Secretarial/Clerical</u>										
White	8	109	8	101	7	107	8	106	5	99
Black	0	1	0	1	0	1	0	1	0	2
<u>Technical/Paraprofessional</u>										
White	12	10	13	10	13	10	13	10	12	11
<u>Skilled Craft</u>										
White	16	0	18	0	18	0	18	0	21	0
<u>Service/Maintenance</u>										
White	47	33	47	34	45	37	48	41	44	40
Black	0	0	0	1	1	0	0	0	0	0
Total										
White	167.5	311.3	167.5	309.8	163.3	328.3	175	338	170	324
Black	2	3	2	3	4	2	3	2	2	3
Hispanic	4	1	4	1	2	0	2	0	1	1
Asian/Pacific Islander	1	2	4	3	5	3	5	3	5	5
Amer Ind/Alaskan Native	0	0	0	0	0	1	0	1	0	1
Other	0	0	0	0	0	0	1	0	1	0
	<u>174.5</u>	<u>317.3</u>	<u>177.5</u>	<u>316.8</u>	<u>174.3</u>	<u>333.3</u>	<u>186</u>	<u>344</u>	<u>175</u>	<u>334</u>

* Data as of end of December

** Data as of end of September

Number of Full-time and Pro-rata Faculty by College

	2004	2005	2006	2007	2008
Reap College of Education and Human Development					
Full-time	26	27	27	26	24
Pro-rata	4	4	4	3	2
FTE	28.25	29.25	29.25	28.0	25.0
Insalaco College of Creative Arts and Management					
Full-time	31	32	32	33	33
Pro-rata	12	12	11	13	14
FTE	37.0	38.0	37.5	39.5	40.0
College of Health and Human Services					
Full-time	33	29	30	33	34
Pro-rata	3	5	5	3	4
FTE	34.5	31.5	32.5	34.5	36.0
College of Liberal Arts and Sciences					
Full-time	31	33	30	33	33
Pro-rata	2	3	5	3	4
FTE	32.0	34.5	32.5	34.5	35.0
Librarians					
Full-time	8	8	8	8	8
Pro-rata	0	0	0	0	0
FTE	8.0	8.0	8.0	8.0	8.0
TOTAL					
Full-time	129	129	127	133	132
Pro-rata	21	24	25	22	24
FTE	139.75	141.25	139.75	144.5	144.0

Tenure Status Among Full-time Faculty

	2004		2005		2006		2007		2008	
	N	%	N	%	N	%	N	%	N	%
Professor	33	97.1	33	100.0	33	100.0	29	100.0	25	100.0
Assoc Professor	34	80.9	32	71.1	30	73.2	35	81.4	29	76.3
Asst Professor	10	20.4	10	20.4	7	14.3	9	16.7	8	14.3
Instructor	0	0.0	0	0.0	0	0.0	0	0.0	0	0.0
Total University	77	59.7	75	58.1	70	55.1	73	54.9	62	50.0

Number of Full-time Faculty by Rank and Gender

	2004	2005	2006	2007	2008
Professor					
Male	18	17	18	17	14
Female	16	16	15	12	11
Total	34	33	33	29	25 (18.9%)
Associate Prof.					
Male	19	17	16	16	12
Female	23	28	25	27	26
Total	42	45	41	43	38 (28.8%)
Assistant Prof.					
Male	21	23	25	27	30
Female	28	26	24	27	26
Total	49	49	49	54	56 (42.4%)
Instructor					
Male	1	0	2	2	1
Female	3	2	2	5	12
Total	4	2	4	7	13 (9.8%)
Total Full-time	129	129	127	133	132

Number of Full-time Faculty with Terminal Degrees

	2004		2005		2006		2007		2008	
	N	%	N	%	N	%	N	%	N	%
Doctorate	91	70.5	94	72.8	89	70.1	95	71.4	88	66.7
MSLS	8	6.2	8	6.2	8	6.3	7	5.3	7	5.3
MFA	10	7.8	10	7.8	9	7.1	9	6.8	9	6.8
JD/MD	1	0.7	1	0.7	2	1.6	1	0.8	3	2.3
Recognized Equiv	1	0.7	0	0.0	0	0.0	0	0.0	0	0.0
Total University	111	86.1	113	87.6	108	85.1	112	84.2	107	81.1

III. FINANCES

Unrestricted Operating Revenues

	FY 05-06	FY 06-07	FY 07-08
Tuition and fees:			
Tuition:			
Undergraduate School - On Campus	\$35,492,453	\$38,236,652	\$42,891,563
Undergraduate - OCDP	850,607	1,252,125	696,187
Graduate School of Arts & Sciences	9,704,228	10,040,212	10,931,339
Graduate School of Social Work	3,961,610	4,246,501	4,601,839
Total Tuition	50,008,898	53,775,490	59,120,928
Less Scholarship Allowances	-16,758,530	-18,526,002	-21,636,948
Net Tuition	\$33,250,368	\$35,249,488	\$37,483,980
Fees:			
Registration and Application	188,475	192,575	205,340
General	1,671,950	1,790,795	1,948,320
Music Lessons	179,070	176,962	162,936
Student Teaching	18,720	8,160	6,900
Graduation	122,175	141,075	147,225
Orientation	91,479	134,639	133,271
Student Activities Fees	149,587	154,234	415,569
Non-credit Offerings	581,997	596,761	640,871
Miscellaneous	454,913	553,028	629,734
Total Fees	\$3,458,366	\$3,748,229	\$4,290,166
Total Tuition and Fees (Net)	\$36,708,734	\$38,997,717	\$41,774,146
Federal Grants and Contracts	\$1,218,048	\$1,084,795	\$1,007,485
State Grants and Contracts	1,273,905	1,127,827	1,445,063
Private Gifts and Grants	766,616	951,588	455,284
Income on Long-Term Investments	138,889	121,883	178,312
Other Investment Income	983,200	1,063,897	1,013,016
Net Unrealized and Realized Gains on Long-Term Investments	372,500	699,660	4,476,040
Sales and Services of Educational Activities	272,633	387,870	325,718
Other Sources	560,367	511,005	484,319
	\$5,586,158	\$5,948,525	\$9,385,237
Sales and Services of Auxiliary Enterprises:			
Food Service	\$2,573,918	\$3,039,489	\$3,810,247
Resident Halls	3,703,414	4,290,721	5,514,483
Bookstore	1,218,376	1,356,639	1,393,108
Fricchione Day Care Center	384,384	367,937	481,615
Total Sales and Services of Auxiliary Enterprises	\$7,880,092	\$9,054,786	\$11,199,453
Total Net Assets Released From Restrictions	3,384,625	6,719,467	4,327,956
Total Current Revenues	\$53,559,609	\$60,720,495	\$66,686,792

Percent Distribution of Unrestricted Operating Revenues

	FY 05-06 % of Total	FY 06-07 % of Total	FY 07-08 % of Total
Tuition and fees:			
Tuition:			
Undergraduate School - On Campus	66.3	63.0	64.3
Undergraduate - OCDP	1.6	2.1	1.0
Graduate School of Arts & Sciences	18.1	16.5	16.4
Graduate School of Social Work	7.4	7.0	6.9
Total Tuition	93.4	88.6	88.7
Less Scholarship Allowances	-31.3	-30.5	-32.4
Net Tuition	62.1	58.1	56.2
Fees:			
Registration and application	0.4	0.3	0.3
General	3.1	2.9	2.9
Music lessons	0.3	0.3	0.2
Student teaching	0.0	0.0	0.0
Graduation	0.2	0.2	0.2
Orientation	0.2	0.2	0.2
Student Activities Fees	0.3	0.3	0.6
Non-credit offerings	1.1	1.0	1.0
Miscellaneous	0.8	0.9	0.9
Total Fees	6.4	6.2	6.4
Total Tuition and Fees (Net)	68.5	64.2	62.6
Federal Grants and Contracts	2.3	1.8	1.5
State Grants and Contracts	2.4	1.9	2.2
Private Gifts and Grants	1.4	1.6	0.7
Income on Long-Term Investments	0.3	0.2	0.3
Other Investment Income	1.8	1.8	1.5
Net Unrealized and Realized Gains on Long-Term Investments	0.7	1.2	6.7
Sales and Services of Educational Activities	0.5	0.6	0.5
Other Sources	1.0	0.8	0.7
	10.4	9.8	14.1
Sales and Services of Auxiliary Enterprises:			
Food service	4.8	5.0	5.7
Resident halls	6.9	7.1	8.3
Bookstore	2.3	2.2	2.1
Fricchione Day Care Center	0.7	0.6	0.7
Total Sales and Services of Auxiliary Enterprises	14.7	14.9	16.8
Total Net Assets Released From Restrictions	6.3	11.1	6.5
Total Current Revenues	100.0	100.0	100.0

Unrestricted Operating Expenditures

	FY 05-06	FY 06-07	FY 07-08
Educational and General:			
Instruction	\$19,202,082	\$19,357,535	\$19,713,469
Research	338,535	398,548	474,690
Academic Support	6,139,682	5,964,049	6,710,050
Student Services	7,282,789	8,610,138	9,365,455
Institutional Support	9,486,865	9,864,205	11,258,506
Student Aid	323,752	318,572	325,379
Educational and General Expenditures	\$42,773,705	\$44,513,047	\$47,847,549
Auxiliary Enterprises	6,855,942	7,957,008	9,074,675
Total Expenditures	\$49,629,647	\$52,470,055	\$56,922,224

Percent Distribution of Unrestricted Operating Expenditures

	FY 05-06 % of Total	FY 06-07 % of Total	FY 07-08 % of Total
Educational and General:			
Instruction	38.7	36.9	34.6
Research	0.7	0.7	0.8
Academic Support	12.4	11.4	11.8
Student Services	14.7	16.4	16.5
Institutional Support	19.1	18.8	19.8
Student Aid	0.7	0.6	0.6
Educational and General Expenditures	86.2	84.8	84.1
Auxiliary Enterprises	13.8	15.2	15.9
Total Expenditures	100.0	100.0	100.0

**Externally Sponsored Research
as a Percentage of
Unrestricted Operating Expenditures**

	<u>FY 05-06</u>	<u>FY 06-07</u>	<u>FY 07-08</u>
Total Unrestricted Operating Expenditures	\$49,629,647	\$52,470,055	\$56,922,224
Externally Sponsored Research Expenditures	\$338,535	398,548	474,690
Research Support as Percent of Total	0.68%	0.76%	0.83%

Endowment, Quasi-Endowment and Other Long-Term Investments

	<u>2005-06</u>	<u>2006-07</u>	<u>2007-08</u>
Endowment and Similar Funds:			
Quasi-Endowment, income designated for Graduate School of Arts and Sciences	\$465,451	\$465,451	\$465,451
Quasi-Endowment, income designated for scholarship aid	411,322	465,046	465,966
Quasi-Endowment, income not designated	17,573,980	18,630,870	23,747,337
Total Quasi-Endowment	<u>18,450,753</u>	<u>19,561,367</u>	<u>24,678,754</u>
Life Income Trust	26,699	26,427	27,027
Endowment	<u>8,999,936</u>	<u>14,610,301</u>	<u>14,371,003</u>
Total Endowment and Similar Funds	27,477,388	34,198,095	39,076,784
Other Long-Term Investments:			
Beneficial Interest in Perpetual Trusts	800,256	1,122,585	1,007,351
For matching funds under Federal Student Loan Program	248,561	254,724	263,261
Other	690,050	703,480	899,219
Total Other Long-Term Investments	<u>1,738,867</u>	<u>2,080,789</u>	<u>2,169,831</u>
Total Long-Term Investments	<u>\$29,216,255</u>	<u>\$36,278,884</u>	<u>\$41,246,615</u>

Tuition, Fees, Room and Board Charges

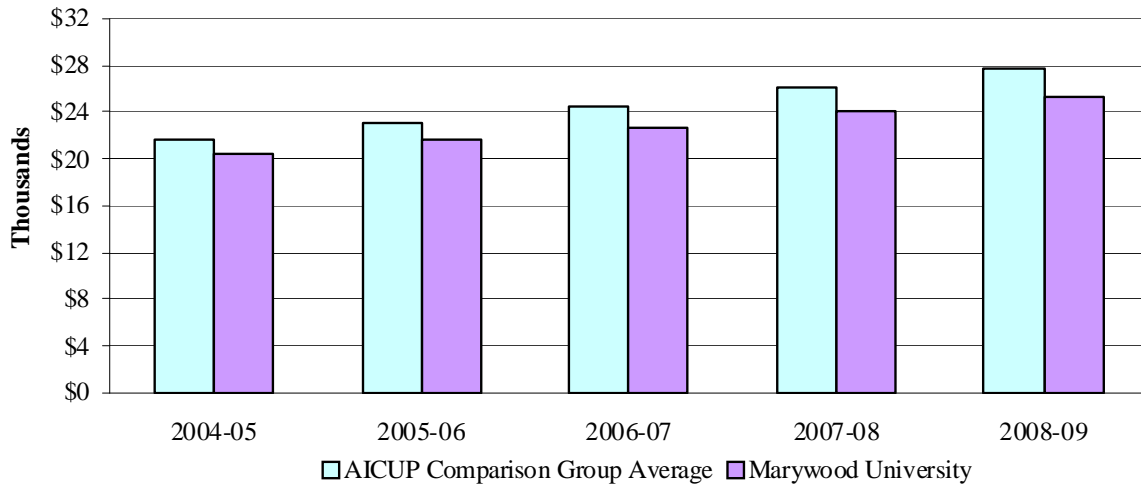
	<u>FY 04-05</u>	<u>FY 05-06</u>	<u>FY 06-07</u>	<u>FY 07-08</u>	<u>FY 08-09</u>
<u>Tuition Rates Per Credit</u>					
<i>Undergraduate</i>	\$612	\$643	\$600	\$550	\$550
<i>Off-Campus Degree Program</i>	367	388	395	395	450
<i>Master's Level</i>	617	643	672	695	695
<i>Master of Fine Arts</i>	627	658	690	695	695
<i>Master of Social Work</i>	627	658	690	695	695
<i>Master of Public Administration</i>	632	663	695	695	695
<i>Master of Social Work (off-campus)</i>	632	663	695	695	695
<i>Master of Social Work (Bloomsburg Program)</i>				560	560
<i>Doctoral Level</i>	652	683	716	750	785
<i>Ph.D. (Hershey)</i>	682	713	745	780	815
<i>Keystone Professional Studies</i>				560	
<u>General Fee Per Year</u>					
<i>Full-Time</i>	\$750	\$790	\$830	\$850	\$890
<i>Part-Time</i>	270	280	280	300	340
<u>Student Activities Fee Per Year</u>					
<i>UG - Full-Time</i>	\$90	\$90	\$90	\$200	\$200
<i>UG - Part-Time</i>	50	50	50	100	100
<i>GR - Full- & Part-Time</i>	-	-	-	40	40
<u>Registration Fee Per Year</u>					
	\$100	\$100	\$100	\$100	\$100
<u>Room & Meals Per Year</u>					
<i>Double Room and 19 Meals/Week</i>	\$8,582	\$9,100	\$9,690	\$10,410	\$11,108
<i>Double Room and 185 Block Plan</i>	8,582	9,100	9,690	10,410	11,108
<i>Double Room and 12 Meals/Week</i>	8,072	8,566	9,100	9,780	10,458
<i>Double Room and 150 Block Plan</i>	8,072	8,566	9,100	9,780	10,458
<i>Single Room Fee (additional charge)</i>	800	850	850	850	1,255
<u>Other Major Fees</u>					
<i>New Student Matriculation Fee</i>	\$175	\$175	\$200	\$200	\$200
<i>Graduation Fee</i>	150	175	200	200	225
<i>Music Lessons (per credit charge in addition to tuition)</i>	385	385	395	395	395
<u>Undergraduate Cost of Attendance</u>					
<i>Tuition for Full-Time Students*</i>	\$19,584	\$20,700	\$21,840	\$23,040	\$24,300
<i>Room & Meals (19 meals)</i>	8,582	9,100	9,690	10,410	11,108
<i>General Fee</i>	750	790	830	850	890
<i>Student Activities Fee</i>	90	90	90	200	200
Total Cost Per Year	\$29,006	\$30,680	\$32,450	\$34,500	\$36,498

* For Academic Year 2004-05, all **new** incoming full-time undergrads were charged at a Block Tuition Rate. For all years subsequent to 2004-05, Block Tuition will be charged.

**Total Cost for Tuition & Required Fees and Room and Board
Marywood University and CICU Institutions**

	2006-07 \$	2007-08 \$	2008-09 \$	most recent increase %
<u>Tuition and Fees</u>				
Marywood University	22,760	24,090	25,390	5.4
Arcadia University	25,990	27,800	29,700	6.8
Gannon University	19,996	21,346	22,662	6.2
Immaculata University	20,575	22,650	24,575	8.5
King's College	22,280	23,450	24,680	5.2
La Roche College	18,220	19,270	20,330	5.5
La Salle University	27,700	29,400	31,200	6.1
Misericordia University	20,860	21,950	23,150	5.5
St. Francis University	22,224	23,494	24,840	5.7
St. Joseph's University	29,095	30,985	32,860	6.1
Susquehanna University	27,620	29,330	31,080	6.0
University of Scranton	25,938	28,758	31,576	9.8
Villanova University	31,650	33,561	36,079	7.5
Widener University	26,750	28,630	30,450	6.4
Wilkes University	22,990	24,080	25,170	4.5
<u>Room & Board</u>				
Marywood University	9,690	10,410	11,108	6.7
Arcadia University	9,660	9,980	10,280	6.3
Gannon University	7,880	8,300	8,710	4.9
Immaculata University	9,335	9,800	10,400	6.1
King's College	8,590	8,930	9,370	4.9
La Roche College	7,564	7,942	8,340	5.0
La Salle University	10,300	10,380	10,690	3.0
Misericordia University	8,640	9,100	9,650	6.0
St. Francis University	7,640	7,984	8,422	5.5
St. Joseph's University	10,170	10,550	11,230	6.4
Susquehanna University	7,600	8,000	8,400	5.0
University of Scranton	10,224	10,610	10,990	3.6
Villanova University	10,141	10,312	10,596	2.8
Widener University	9,640	10,240	10,840	5.9
Wilkes University	9,860	10,310	10,780	4.6

Tuition and Fees: AICUP Comparison Group Average v. Marywood University



Student Financial Aid

Funding Source	FY 03-04	FY 04-05	FY 05-06	FY 06-07	FY 07-08
Institutional Aid					
Marywood University	\$13,100,428	\$14,968,376	\$16,359,652	\$17,956,688	\$20,937,917
Endowments	415,954	197,625	88,301	47,126	44,183
Institutional Aid	\$13,516,382	\$15,166,001	\$16,447,953	\$18,003,814	\$20,982,100
Federal, State, and Private Aid					
Federal	1,910,676	1,972,003	1,840,984	2,093,412	2,433,434
State	2,273,502	2,295,504	2,510,888	2,915,731	2,965,606
Private	76,191	91,386	102,690	182,989	196,412
Federal, State and Private Aid	\$4,260,369	\$4,358,893	\$4,454,562	\$5,192,132	\$5,595,452
Grand Total	\$17,776,751	\$19,524,894	\$20,902,515	\$23,195,946	\$26,577,552

For comparability, Pell and PHEAA grants (listed below) are included in the above federal and state sources, respectively. These amounts are excluded from the audited financial statements.

Pell Grants	\$1,486,743	\$1,530,028	\$1,440,709	\$1,512,921	\$1,809,117
PHEAA Grants	\$2,239,506	\$2,277,272	\$2,379,524	\$2,838,451	\$2,806,108

Total Gifts and Grants (Fiscal Gifts)

<u>Source</u>	<u>FY '04</u> <u>Amount</u>	<u>FY '05</u> <u>Amount</u>	<u>FY '06</u> <u>Amount</u>	<u>FY '07</u> <u>Amount</u>	<u>FY '08</u> <u>Amount</u>	<u>Five Year</u> <u>Amount</u>
Alumni	\$1,524,840	\$4,321,318	\$2,194,449	\$1,460,944	\$1,723,787	\$11,225,338
Foundations/Corporations	789,032	663,882	795,688	1,961,994	1,742,628	5,953,224
Friends	905,484	756,884	1,168,070	2,425,930	1,606,027	6,862,395
Parents	43,072	30,897	19,842	33,729	94,554	222,093
Sub-total	<u>\$3,262,428</u>	<u>\$5,772,981</u>	<u>\$4,178,049</u>	<u>\$5,882,597</u>	<u>\$5,166,996</u>	<u>\$24,263,050</u>
Sisters, Servants of the Immaculate Heart of Mary						
I.H.M. Scholarship Gift	340,000	325,000	300,000	250,000	255,000	1,470,000
Competitive Government Grants and Contracts	221,174	907,590	938,858	557,827	2,818,439	5,443,899
Sub-total	<u>\$ 561,174</u>	<u>\$1,232,590</u>	<u>\$1,238,858</u>	<u>\$ 807,827</u>	<u>\$3,073,439</u>	<u>\$6,913,889</u>
Grand Total	<u>\$3,823,602</u>	<u>\$7,005,571</u>	<u>\$5,416,907</u>	<u>\$6,690,424</u>	<u>\$8,240,434</u>	<u>\$31,176,939</u>

Corporate/Foundation Relations Office Activity

Externally Awarded Grants

<u>Area</u>	<u>FY 2007</u>		<u>FY 2008</u>	
	<u>N</u>	<u>Amount</u>	<u>N</u>	<u>Amount</u>
Insalaco College of Creative Arts and Management	6	\$ 2,315,876	5	\$26,906
Reap College of Education and Human Development	1	10,000	1	\$19,525
College of Health and Human Services	3	42,950	6	\$236,435
College of Liberal Arts and Sciences	0	0	2	\$282,525
Student Life	1	11,500	1	\$11,500
Institutional	7	389,338	7	\$238,660
TOTAL	<u>18</u>	<u>\$ 2,769,664</u>	<u>22</u>	<u>\$815,551</u>

Alumni Giving Fiscal Years 2004 – 2008

<u>Fiscal Year</u>	<u>Number of Donors</u>	<u>% Participation</u>	<u>Total Giving</u>	<u>Average Gift</u>
2004	3,449	22.1	\$1,435,655	\$ 416.25
2005	3,139	19.9	\$4,214,413	\$1,342.60
2006	3,219	20.1	\$2,194,449	\$ 681.72
2007	3,821	16.5	\$1,460,944	\$ 382.35
2008	3,967	16.7	\$1,723,787	\$ 434.53

Office of Research and Community Collaboration

Academic Affairs

Research and Program Grants and Contracts

(Public and Private Funds)

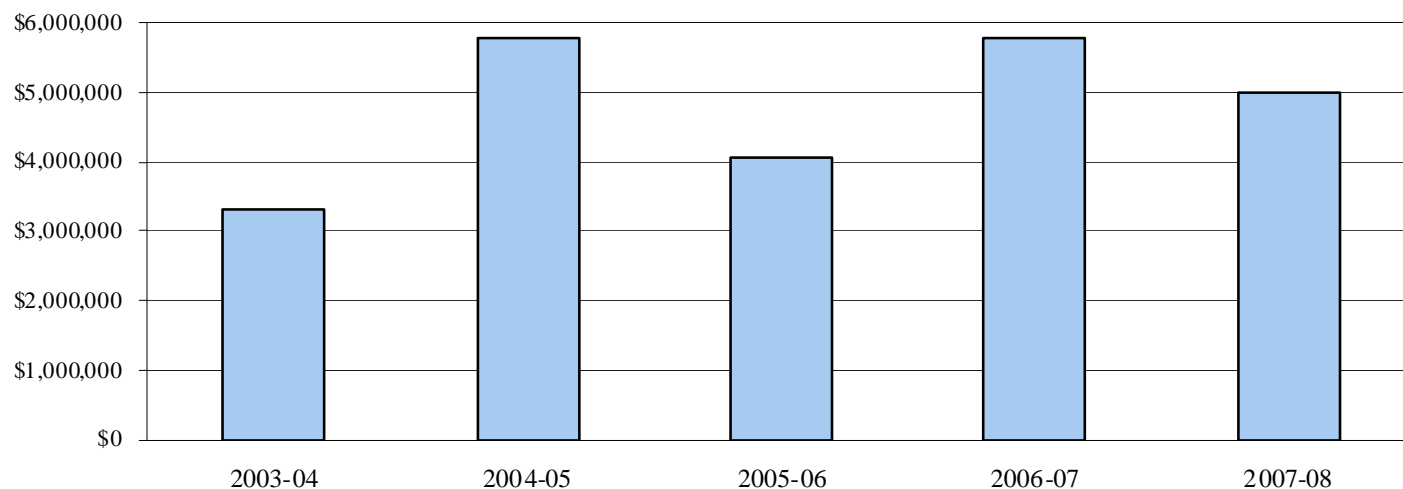
FY 2004/2005	\$1,177,328
FY 2005/2006	\$1,064,825
FY 2006/2007	\$1,191,032
FY 2007/2008	\$1,920,238

Gift* Levels by Campaign Year Giving by Gift Size

Current Operations	2004-05		2005-06		2006-07		2007-08	
	N	\$	N	\$	N	\$	N	\$
\$5,000	38	3,279,081	42	2,236,896	39	1,654,376	36	1,633,463
\$2,500-4,999	22	61,516	36	109,583	31	89,333	32	94,493
\$1,000-2,499	145	170,497	123	145,778	130	156,295	116	131,519
\$250-999	287	109,770	362	139,202	248	89,467	336	119,587
\$100-249	926	106,488	1079	125,249	944	107,295	1076	138,719
\$1-99	2,443	77,962	2753	86,287	2613	83,414	2354	86,177
Totals	3,861	3,805,314	4,395	2,842,995	4,005	2,180,180	3,950	2,203,958
Capital and Endowment								
\$5,000	45	2,127,904	57	1,391,903	67	3,738,800	63	2,976,277
\$2,500-4,999	19	62,054	28	85,075	15	45,323	23	65,245
\$1,000-2,499	48	62,224	73	86,488	72	96,016	74	95,726
\$250-999	50	20,790	118	49,683	102	45,557	120	48,985
\$100-249	98	13,902	120	16,018	164	20,278	199	25,051
\$1-99	164	5,794	187	5,887	183	6,441	176	6,753
Totals	424	2,292,668	583	1,635,054	603	3,952,415	655	3,218,037
Total Giving by Year								
Current Operations & Capital and Endowment	4,285	6,097,982	4,978	4,478,049	4,608	6,132,595	4,605	5,421,955
Presidential Society	323	5,783,944	359	4,055,723	354	5,780,143	356	\$5,000,399

* Does not include Competitive Government Grants and Contracts

Total Presidential Society Giving



IV. FACILITIES

Land and Building Inventory

Land (In Acres):

	<u>June 30, 2004</u>	<u>June 30, 2005</u>	<u>June 30, 2006</u>	<u>June 30, 2007</u>	<u>June 30, 2008</u>
Land in Scranton, PA	70.0	70.0	70.0	70.0	70.0
Land in Dunmore, PA	43.4	43.4	43.4	43.4	43.4
Total	113.4	113.4	113.4	113.4	113.4

Buildings:

<u>Building</u>	<u>Predominant Function</u>	<u>Usable Square Footage</u>
Adams Avenue Property (#2349)	Student Life Residence	2,855
Bethany Hall and Garage	Student Residence	4,969
Center For Natural and Health Sciences	Academic	45,681
Domiano Early Childhood Center	Special	2,809
Emmanuel Hall	Administrative	8,359
Fricchione Day Care Center	Special	8,395
Health and Physical Education Center	Physical Education/Recreation	47,655
Immaculata Hall	Administration/Student Residence	32,002
Insalaco Center for Studio Arts	Academic	55,843
Keith J. O'Neill Center for Healthy Families	Academic/Special	24,828
Learning Resources Center	Library	66,231
Liberal Arts Center	Academic/Administrative	70,216
Loughran Hall	Student Residence/Administrative	109,250
Madonna Hall	Student Residence	51,685
Maria Hall	Administrative	5,012
McCarty Hall	Student Residence	4,920
McGowan Center for Graduate and Professional Studies	Academic	55,278
Perpetual Help Hall	Student Residence	3,576
Power Plant and Maintenance Building	Support	19,676
Printing and Mailing Center	Support	3,676
Regina Hall	Student Residence/Campus Ministry/Chapel	56,928
Richmont Street Property (#1210)	Presidential Residence	4,267
Robert J. Mellow Center	Academic	62,722
Sette La Verghetta Center for Performing Arts	Academic	39,774
Student Center (Nazareth Hall)	Campus Life	52,231
Visual Arts Center	Academic	23,507
Washington Avenue Property (#2400)	IHM Residence	3,181
Woodland Apartments (Original)	Student Residences	10,947
Woodland Apartments (New)	Student Residences	14,129
Total Square Footage		890,602
Net Book Value of Buildings (historical cost less accumulated depreciation)		\$88,554,272
Cost of Replacement		\$177,174,620

Leased facilities:

Allentown College - School of Social Work

University Library 2007-08

Resources:	Print Collection	
	Books and Bound Periodicals	220,365
	Books Added FY '07-'08	2,543
	Print Journal Titles	434
	Distinct Journal Titles (Electronic and Print)	15,904
	Microfiche	364,677
	Reels of Microfilm	13,363
	Media Collection	
	Art Prints	339
	Audiotapes	7,647
	Compact Discs	4,421
	Computer Software	21
	DVDs	2,496
	Records	5,240
	Slides	22,584
	Sound Slidesets	27
	Study Prints	418
	Videorecordings	6,769
	Electronic Resources	
	WWW Databases	56
	Full-Text Databases	38
Expenditures:	Books and Periodicals	\$229,792
	Electronic Resources	\$ 97,420
	Bindings	\$ 6,244
	Non-Print Media	\$ 20,439
	Supplies	\$ 13,820
Interlibrary Loan:	Borrowed	1,391
	Loaned	3,016
Staff:	Professionals	9.0
	Clerical	14.8
	Student Assistants	28.0
Hours of Service/Week		83
Reference Transactions in a Typical Week		108
Gate Count in a Typical Week		1,812
No. of Presentations, Workshops, Etc.		137
No. of Students, Faculty Attending		2,056

Office of Information Technology

The Office of Information Technology (OIT) is responsible for providing the appropriate level of tech service support to the Marywood University campus. It is the centralized organization of all IT resources on campus. It is made up of four departments: User Support Services, Application Programming Services, Network & Systems Administration Services, and Academic Computing Services.

User Support Services

Help Desk support service provides centralized multi-campus-wide support function to record, track and monitor requests for consulting, new service requests, desktop support, problem solving, software support and other OIT services. The Marywood University Centralized Call Center (CCC) will work with the OIT staff to resolve and coordinate resolution of service requests. Regardless of the need, the Call Center is available to handle the technology need.

Academic Lab Services provides the management and technical support required to provide an appropriate learning environment for students. This service promotes the smooth and reliable operation of the academic laboratory resources (including teaching labs and smart classrooms), provides that equipment is in good working order and that the computer laboratory environment is clean, secure and organized. The services provided for all fully supported labs. The Field Support organization is available with support technicians to provide support for Labs, Faculty, and Staff. The hours of support are:

Monday to Thursday: 8:00 am to 8:30 pm

Friday: 8:00 am to 4:30 pm

Saturday and Sunday: 9:00 am to 5:30 PM

Computer System availability on campus

Classrooms & Drop-in Areas

	Hardware	Software
39 rooms in 5 buildings	37 Pentium IV class computers 2 Macintoshes 2 laser printers	MS Office Specialized Software
17 drop-in areas in 8 buildings	78 Pentium IV computers 17 Macintoshes Laser and inkjet printers – pay per copy 9 flatbed scanners	MS Office Specialized software for Music, Nursing, Psychology, desktop publishing and statistics
Loughran Hall (24 hours)	18 Pentium IV class computers Laser printers – pay per copy	MS Office

Labs

Bldg/Room	Hardware	Software	
VAC 114 Graphic Design	20 Macintosh computers 3 printers 1 scanner	Specialized graphic design software	
HFC 207 Nutrition and Dietetics	21 Pentium IV computers 1 laser printer 1 scanner	MS Office Specialized Nutrition software	
LAC 211	21 Pentium IV computers 1 laser printer – pay per copy	Illustrator Quark Express HomePage	PhotoShop MS Office Lit Pro
MG 1056 Business Lab	21 Pentium IV computers 1 laser printer – pay per copy 1 flatbed scanner I 5 Series server	HomePage MS Office MS Visual Basic MS Visual C++ Peachtree Accounting	Client Access MS Project Visio Pro
MG 1057 General Purpose Lab	21 Pentium IV computers 1 laser printer – pay per copy 1 scanner	DSM IV MS Office SPSS Automatic Articulation	HLM 5 Phonetic Font Salt StatView
PAC 102	17 Pentium IV computers 1 laser printer – pay per copy 1 inkjet printer 1 flatbed scanner	PageMaker MS Office DesignCAD Pro Authorware Fusion Fireworks Fireworks Movie Magic	PhotoShop HyperStudio Infini-D Director
ISAC 252 Art Lab	24 Macintosh computers 1 laser printer – pay per copy 3 color inkjet printers 4 scanners	Illustrator Premiere Freehand PageMill	Photoshop Director MS Office Quark Express
SC 102 Business, Science, Nursing, Nutrition, Math and Social Science	21 Pentium IV computers 1 laser printer – pay per copy 1 scanner	Electronic Companion ASP Statistical Software HomePage MS Office 9-Month Miracle Nutritionist 5 Nvivo Nud*ist GeriMenu Modules 1 and 2 Food Works Specialized Nursing and Chemistry	Maple V Visual C++ SPSS Turbo Tax Shockwave NLN Practice
SC 103	17 Pentium IV computers 1 Plotter	MS Office Specialized software	
VAC 203 CAD Lab	25 Pentium IV computers 1 laser printer – pay per copy 2 plotters – E size 1 scanner	MS Office Architectural Desktop 2007 AutoDesk Viz 2007	

Application Programming Services

Application Programming Services supports administrators and staff in carrying out their respective service functions for institutional management and student services. This function provides the means to apply technology to administrative problems and provides ongoing technical and staff support for effective and efficient data and process operations. This would include providing programming support for some 5,871 applications necessary for managing the University's ERP system that provides support for the business functions of Marywood. They also provide programming support for applications on the University's website.

Network and System Administration

Marywood University is committed to providing high quality, usable technology for its students, faculty and staff. This commitment includes access to the Internet and World Wide Web, as well as sharing of institutional data, as appropriate, in a real-time, on-line environment. Evidence of this commitment is the Marywood data infrastructure, which began in 1987 and is continuing to grow. This infrastructure consists of fiber optic backbone, voice, data and video wiring, desktop and laptop computers, midrange computers, the campus-wide information system (CWIS), computer labs, networks operating under the client-server architecture, gateways to the Internet and World Wide Web, multi-media instruction and demonstration theaters. An impressive selection of technology is offered in the Insalaco Center for Studio Arts and the Shields Visual Arts Center. There are five labs with specialized CAD, graphic design, photographic, and illustration/drawing software.

The fiber optic backbone connects all major classroom and administrative buildings. All residence halls are connected. Nineteen buildings, which include the six residences, have been wired for voice, data and video. Students and faculty regularly access the Internet through our more than 5000 connections. More than 600 hundred students own computers and are connected to the campus network in their dorm rooms. There are two dedicated Ethernet connections to the Internet in each of the residence hall student rooms– 20 megabits for the residence halls and classrooms and 10 Megabits for administrative use. The Library employs a dedicated system using the SIRSI/DYNEX software capability that provides a web interface to the public access catalog, which can be accessed on and off campus. A WEBCT server is housing over 500 courses, used for on- and off-campus instruction and the Moodle CMS system is housing over 160 courses. Wireless access is available in most major buildings. All new construction and renovations incorporate wireless access as part of the planning and design process. Marywood is a member of the Northeastern Pennsylvania Library Network. The library subscribes to 58 Internet accessible databases/resources, which are available to both on- and off-campus students. There is an Electronic Reserve server in the LRC that provides access to our reserve materials over the Internet.

Academic Computing

The purpose is to advise and assist faculty in the use of information technology for the creation, organization, analysis, and presentation of scholarly, scientific, and curricular resources. Right now we support two Learning Management Systems – WebCT and Moodle, but will be utilizing just one system (Moodle) over the next two years. It is the intention of the department to drive the technology evolution on campus. This is being accomplished by training the faculty on the utilization of the technology we have available and conducting discussions with the faculty to identify and offer technical solutions to instructional needs.

V. ACCREDITATIONS

Marywood University Accreditations/Approvals

Regional

Marywood University is accredited by the **Middle States Commission on Higher Education**,

3524 Market Street, Philadelphia, PA 19104

Phone: 267-284-5000

The Commission on Higher Education is the unit of the Middle States Association of Colleges and Schools that accredits degree-granting colleges and universities in the Middle States region, which includes Delaware, the District of Columbia, Maryland, New Jersey, New York, Pennsylvania, Puerto Rico, the U.S. Virgin Islands, and several locations abroad.

Professional

The Master's degree in Physician Assistant Studies
Accreditation Review Committee on Education for the Physician Assistant, Inc.,

12000 Findley Road, Suite 240, Duluth, GA 30097

Phone: 770-476-1224

The Graduate Art Therapy Program of the Department of Art

American Art Therapy Association, Inc.,

5999 Stevenson Ave., Alexandria, VA 22304

Phone: 888-290-0878 or 1-703-212-2238

The Didactic Program, Coordinated Program, and Internship and Distance Internship Programs in the Nutrition and Dietetics Department

Commission on Accreditation for Dietetics Education, American Dietetic Association,

120 South Riverside Plaza, Suite 2000, Chicago, IL 60606

Phone: 312-899-4817 ext. 5400

The Undergraduate Music Therapy Program

American Music Therapy Association, Inc.,

8455 Colesville Road, Suite 1000, Silver Spring, MD 20910

Phone: 1-301-589-3300

The Master's Program in Speech-Language Pathology

Council on Academic Accreditation, American Speech-Language-Hearing Association,

10801 Rockville Pike, Rockville, MD 20852

Phone: 800-498-2071

Business and Managerial Science Programs granting the B.B.A. Degrees at the Undergraduate Level and the M.B.A. and M.S. in Management Information System Degrees at the Graduate Level

Association of Collegiate Business Schools and Programs,

7007 College Boulevard, Suite 420, Overland Park, KS 66211

Phone: 913-339-9356

The Athletic Training Program in the Health and Physical Education Department

Commission on Accreditation of Athletic Training Education,

2201 Double Creek Drive, Suite 5006, Round Rock, TX 78664

Phone: 512-733-9700

Counseling Programs in Elementary Counseling, Secondary School Counseling and Mental Health Counseling
Council for Accreditation of Counseling and Related Educational Programs,

5999 Stevenson Avenue, Alexandria, VA 22304

Phone: 703-823-9800 ext. 301

The Masters and Baccalaureate of Social Work degree programs in the School of Social Work

Council on Social Work Education,

1725 Duke Street, Suite 500, Alexandria, VA 22314

Phone: 703-683-8080

Programs in Art and Design of the Department of Art
National Association of Schools of Art and Design,

11250 Roger Bacon Drive, Suite 21, Reston, VA 20190

Phone: 703-437-0700

Programs in Music

National Association of Schools of Music,

11250 Roger Bacon Drive, Suite 21, Reston, VA 20190

Phone: 703-437-0700

Programs for the preparation of elementary, secondary, K-12 and special education teachers and for the preparation of other school personnel including school psychologists, guidance counselors, principals, superintendents, librarians, reading specialists, speech and language pathologists, home school visitors, and supervisory personnel

National Council for Accreditation of Teacher Education,

2010 Massachusetts Ave NW, Suite 500,

Washington, DC 20036

Phone: 202-466-7496

The Graduate and Undergraduate Department of Nursing

National League for Nursing Accrediting Commission,

61 Broadway, 33rd Floor, New York, NY 10006

Phone: 1-800-669-1656

The Doctor of Psychology (Psy.D.) program in Clinical Psychology is accredited as a doctoral program in clinical psychology by the **American Psychological Association (APA)**, Office of Program Consultation and Accreditation,

750 First Street, NE, Washington, DC 20002-4242

Phone: 202-336-5979

VI. STRATEGIC PLAN GOALS AND OBJECTIVES

Marywood University STRATEGIC PLAN GOALS AND OBJECTIVES 2006 - 2010

GOAL 1: Create both academic and physical infrastructure to provide a learning environment that enables students to succeed academically and professionally.

Objective A: *Enhance the quality of the Marywood educational experience*

Objective B: *Continue emphasis on research and model program development to expand opportunities for faculty, students, and the community.*

Objective C: *Improve physical environment for delivering instruction, conducting research, and accommodating alternative learning styles and delivery modalities.*

GOAL 2: Create a culturally diverse and global educational experience to educate students to live responsibly in a diverse and interdependent world.

Objective A: *Increase the number of culturally diverse students, faculty, and staff.*

Objective B: *Develop more sensitive and positive attitudes and behaviors toward cultural diversity by faculty and staff including attention to providing a welcoming and supportive campus.*

Objective C: *Develop more sensitive and positive attitudes and behaviors toward cultural diversity by students including attention to providing a welcoming and supportive campus.*

GOAL 3: Align resources to achieve institutional goals.

Objective A: *Improve information services and access for students, faculty, staff, and external audiences.*

Objective B: *Improve financial position through revenue enhancement activity.*

Objective C: *Improve the quality and efficiency of infrastructure.*

Objective D: *Align human resource initiatives to institutional goals.*