



# Marywood

UNIVERSITY



**FACT BOOK 2012-2013**

*Office of Planning and Institutional Research*



## **Mission Statement**

*Marywood University, sponsored by the Congregation of the Sisters, Servants of the Immaculate Heart of Mary, roots itself in the Catholic intellectual tradition, the principle of justice, and the belief that education empowers people. The University integrates an enduring liberal arts tradition and professional disciplines to create a comprehensive learning experience. Our undergraduate and graduate programs promote academic excellence, advance innovative scholarship, and foster leadership in service to others. Within a welcoming and supportive community, Marywood challenges individuals of all backgrounds to achieve their full potential and make choices based on spiritual and ethical values. Marywood University prepares students to seek sustainable solutions for the common good and educates global citizens to live responsibly in an interdependent world.*

## MEMORANDUM

TO: Marywood University Colleagues

FROM: Dr. Ellen Boylan  
Director of Planning and Institutional Research

RE: *Fact Book 2012-2013*

DATE: January 2013

The Marywood University *Fact Book 2012-2013*, eighteenth edition, presents concise tables of data counts and trends on students, personnel, finances and facilities. Input is submitted by many campus departments and units and then assembled and published by the Office of Planning and Institutional Research. Sincere thanks to our campus colleagues for their assistance.

Reflected in this *Fact Book* are data on important recent activity:

- Enhancements to OIT services
- Race/ethnicity data that reflect new required IPEDS categorizations

Footnotes on selected pages clarify important institutional changes.

The *Fact Book* is available for downloading and printing. For access, sign in to the MarywoodYou portal and click on the Documents tab. Find the Document Type: University, choose the Section: General and the Factbook will appear in the documents listed. It is also available to the general public. Go to the Marywood University Office of Planning and Institutional Research web page at <http://www.marywood.edu/instresearch>.

We welcome your comments and suggestions for producing a *Fact Book* with the most timely and useful information possible for the entire campus. The contact person in the Office of Planning and Institutional Research for questions and comments on the *Fact Book 2012-2013* is Ms. Charlotte Woodward, Assistant Director of Institutional Research, who can be reached at [woodward@marywood.edu](mailto:woodward@marywood.edu) or 570-348-6203.

/ld



# TABLE OF CONTENTS

## I STUDENTS

A.	Synopsis of Baccalaureate Degree Programs and Majors .....	1
B.	Synopsis of Graduate Degree Programs .....	3
C.	Degrees Granted by College and Department .....	5
D.	Admissions Activity	
1.	Undergraduate.....	9
♦	<i>Trends in Undergraduate Admissions Activity</i> .....	9
2.	Graduate.....	10
♦	<i>Graduate Admissions Funnel by College</i> .....	10
E.	Average SAT Scores for First-time Full-time Freshmen.....	11
♦	<i>Trends in SAT Scores of First-time Full-time Freshmen</i> .....	11
F.	Fall Headcount and FTE Enrollment by College and Time Status.....	12
G.	Fall Headcount Enrollment by College and Race/Ethnicity .....	16
♦	<i>Trends in Total Undergraduate Enrollment</i> .....	18
♦	<i>Trends in Total Graduate Enrollment</i> .....	18
H.	Fall Headcount Enrollment by College, Department and Level.....	19
I.	Fall Headcount Enrollment by College and Gender .....	21
J.	Fall Undergraduate Enrollment by On/Off-Campus Living.....	23
K.	Students with Disabilities .....	23
L.	Study Abroad Program - Location and Majors of Students.....	23
M.	International Student Enrollment	
1.	By Country.....	24
2.	By Major .....	24
N.	Honors Program	
1.	Majors Represented in Honors Program.....	25
2.	Honors Courses Offered .....	25
O.	Retention and Graduation Rates	
♦	<i>Trends in 6-year Graduation Rates of First-time Full-time Freshmen</i> .....	26
♦	<i>Trends in Freshman Class 1-Year Retention and 6-year Graduation</i> .....	27
P.	Athletics and Recreation .....	28

## II PERSONNEL

A.	Employees by Ethnicity, EEO Category and Time Status.....	29
B.	Full-time Employees by Gender and Ethnicity.....	30
C.	Faculty	
1.	Number of Full-time and Pro-rata Faculty by College .....	31
2.	Tenure Status Among Full-time Faculty.....	31
3.	Number of Full-time Faculty by Rank and Gender .....	32
4.	Number of Full-time Faculty with Terminal Degrees .....	32

IV	FINANCES	
	A.	Unrestricted Operating Revenues ..... 33
	B.	Percent Distribution of Unrestricted Operating Revenues..... 34
	C.	Unrestricted Operating Expenditures..... 35
	D.	Percent Distribution of Unrestricted Operating Expenditures ..... 35
	E.	Externally Sponsored Research as a Percentage of Unrestricted Operating Expenditures ..... 36
	F.	Endowment, Quasi-Endowment and Other Long-Term Investments..... 36
	G.	Tuition, Fees and Room & Board Charges..... 37
	H.	Total Cost at Marywood and AICUP Peer Institutions ..... 38
		♦ <i>Tuition and Fees: AICUP Comparison Group Average v. Marywood</i> ..... 39
	I.	Student Financial Aid ..... 39
	J.	Total Gifts and Grants..... 40
	K.	Alumni Giving ..... 40
	L.	Office of Research and Sponsored Programs ..... 40
	M.	Comparison of Gift Levels by Campaign Year ..... 41
		♦ <i>Total Presidential Society Giving</i> ..... 41
V	FACILITIES	
	A.	Land and Building Inventory ..... 42
	B.	University Library..... 43
	C.	Office of Information Technology..... 44
VI	ACCREDITATIONS	..... 46
VII	STRATEGIC PLAN 2010-2015 GOALS AND OBJECTIVES	..... 47

## I. STUDENTS

### Synopsis of Baccalaureate Degree Programs and Majors

(Total 63)

BA Advertising and Public Relations	BA History/Political Science (Pre-law)
BA Art Education	BA History-Social Science/ Secondary Education
BA Art Therapy	BA Musical Theatre
BA Arts Administration (Art)	BA Philosophy
BA Arts Administration (Corporate)	BA Religious Studies
BA Arts Administration (Music)	BA Spanish
BA Arts Administration (Theatre)	BA Spanish/Secondary Education
BA Broadcast Journalism	BA Theatre
BA Communication Arts/Secondary Education (Nonprint Media)	BArch Architecture
BA Communication Arts/Secondary Education (Theatre)	BBA Accounting
BA Comprehensive Social Sciences (General)	BBA Aviation Management (Airport/Airline Management)
BA Comprehensive Social Sciences (Sociology)	BBA Aviation Management (Professional Pilot/Flight Operations)
BA Criminal Justice	BBA Business Information Technology
BA Digital Media and Broadcast Production (Broadcast)	BBA Financial Planning
BA Digital Media and Broadcast Production (Corporate)	BBA Hospitality Management
BA English	BBA International Business
BA English/Secondary Education	BBA Management
BA French	BBA Marketing
BA French/Secondary Education	BBA Retail Business Management
BA Health Services Administration (General)	BEDA Environmental Design - Architecture
BA Health Services Administration (Gerontology)	BFA Design (Graphic Design)
BA History	BFA Design (Interior Architecture/Design)
BA History/Political Science	BFA Design (Photography)
	BFA Studio Art (Ceramics)
	BFA Studio Art (Illustration)
	BFA Studio Art (Painting)
	BFA Studio Art (Sculpture)

## Synopsis of Baccalaureate Degree Programs and Majors

(Continued)

BM	Music Education	BS	Health Sciences
BM	Music Performance	BS	Mathematics
BM	Music Therapy	BS	Mathematics/Secondary Education
BS	Athletic Training	BS	Medical Laboratory Science
BS	Biology	BS	Nutrition and Dietetics
BS	Biology (Pre-Chiropractic)	BS	Nutrition and Dietetics/Spanish
BS	Biology (Pre-Professional)	BS	Pre-Physician Assistant Studies
BS	Biology/Secondary Education	BS	Psychology
BS	Biotechnology	BS	Psychology (Clinical Practices)
BS	Communication Sciences and Disorders (Deaf Studies)	BS	Psychology (Industrial/Organizational)
BS	Communication Sciences and Disorders (Pre-Professional)	BS	Special Education
BS	Early Childhood Education	BS	Special Education/English Secondary
BS	Early Childhood Education/Special Education	BS	Special Education/English-Science
BS	Elementary Education	BS	Special Education/Mathematics Secondary
BS	Environmental Science	BS	Special Education/Math-English
BS	Family and Consumer Science Education	BS	Special Education/Math-Science
BS	General Science/Secondary Education	BS	Special Education/Math-Social Studies
BS	Health and Physical Education (Education)	BS	Special Education/Social Studies- Science
BS	Health and Physical Education (Physical Activity)	BSN	Nursing – Pre-Service
		BSN	Nursing – RN
		BSW	Social Work

**Total Undergraduate Major Programs: 63**



## Synopsis of Graduate Degree Programs

(Total 36 Masters, 1 Educational Specialist, 2 Doctoral)

MA	Art Education	MFA	Visual Arts (Graphic Design)
MA	Art Therapy	MFA	Visual Arts (Illustration)
MA	Communication Arts (Interdisciplinary)	MFA	Visual Arts (Painting)
MA	Communication Arts (Media Management)	MFA	Visual Arts (Photography)
MA	Communication Arts (Production)	MFA	Visual Arts (Printmaking)
MA	Mental Health Counseling (General)	MFA	Visual Arts (Sculpture)
MA	Music Education	MHSA	Health Services Administration
MA	Psychology (Clinical Services)	MMT	Music Therapy
MA	Psychology (General Theoretical)	MPA	Public Administration
MA	Studio Art (Advertising Design)	MS	Biotechnology
MA	Studio Art (Ceramics)	MS	Clinical Physician Assistant
MA	Studio Art (Clay)	MS	Counselor Education-Elementary
MA	Studio Art (Graphic Design)	MS	Counselor Education – K-12
MA	Studio Art (Illustration)	MS	Counselor Education-Secondary
MA	Studio Art (Interior Architecture)	MS	Criminal Justice
MA	Studio Art (Painting)	MS	Early Childhood Intervention
MA	Studio Art (Photography)	MS	Financial Information Systems
MA	Studio Art (Printmaking)	MS	Gerontology
MA	Studio Art (Sculpture)	MS	Higher Education Administration
MA	Studio Art (Weaving)	MS	Management Information Systems
MArch	Architecture	MS	Nutrition
MAT	PK-4 Education	MS	Physician Assistant Studies
MAT	Secondary/K-12 Education	MS	Reading Education
MBA	Business Administration (Finance and Investments)	MS	School Leadership
MBA	Business Administration (Management Information Systems)	MS	Special Education
MEd	Instructional Leadership	MS	Special Education Administration and Supervision
MFA	Visual Arts (Advertising Design)	MS	Speech-Language Pathology
MFA	Visual Arts (Clay)	MS	Sports Nutrition and Exercise Science
		MSW	Social Work
		EdS	School Psychology

## Synopsis of Graduate Degree Programs

(Continued)

PhD	Human Development (Educational Administration)	PhD	Human Development (Instructional Leadership)
PhD	Human Development (Health Promotion)	PhD	Human Development (Social Work)
PhD	Human Development (Higher Education Administration)	PsyD	Clinical Psychology

**Total Master's Degree Programs: 36**  
**Educational Specialist Degrees: 1**  
**Total Doctoral Degrees: 2, with 5 PhD tracks**

**Degrees Granted by College and Department  
July 1, 2007 to June 30, 2012**

**School of Architecture**

		<u>2007-08</u>	<u>2008-09</u>	<u>2009-10</u>	<u>2010-11</u>	<u>2011-12</u>
<b>Architecture</b>						
	B.F.A.				13	13
	M.A.				7	9
<b>Total Bachelors</b>					<b>13</b>	<b>13</b>
<b>Total Masters</b>					<b>7</b>	<b>9</b>

**Insalaco College of Creative and Performing Arts**

		<u>2006-07</u>	<u>2007-08</u>	<u>2008-09</u>	<u>2009-10</u>	<u>2010-11</u>
<b>Art</b>						
	B.A.	20	20	22	24	18
	B.F.A.	34	62	39	51	44
	M.A.	22	19	11	12	16
	M.F.A.	20	16	16	19	13
<b>Communication Arts</b>						
	B.A.	20	13	22	12	26
	M.A.	14	11	8	16	9
	M.S.	12	3	8	0	0
<b>Music, Theatre &amp; Dance</b>						
	B.A.	3	4	7	8	7
	B.M.	16	9	9	10	10
	M.A.	1	3	4	0	1
<b>Ad Hoc</b>						
	M.A.	0	7	0	0	0
<b>Total Bachelors</b>		<b>93</b>	<b>108</b>	<b>99</b>	<b>105</b>	<b>105</b>
<b>Total Masters</b>		<b>69</b>	<b>59</b>	<b>47</b>	<b>47</b>	<b>39</b>

**Degrees Granted by College and Department**  
**July 1, 2007 to June 30, 2012**  
 (continued)

**Reap College of Education and Human Development**

	<u>2007-08</u>	<u>2008-09</u>	<u>2009-10</u>	<u>2010-11</u>	<u>2011-12</u>
<b>Communication Science and Disorders</b>					
B.S.	7	14	16	21	24
M.S.	23	18	21	15	21
<b>Counseling/Psychology</b>					
B.S.	24	28	27	30	25
M.A.	27	32	37	28	45
M.S.	12	7	18	11	8
Ed.S.	7	9	4	2	16
Psy.D.	6	7	11	10	5
<b>Education</b>					
B.S.	31	20	32	35	36
M.A.T.	11	12	28	19	20
M.Ed.	1	2	3	5	1
M.S.	14	22	12	20	17
<b>Human Development</b>					
Ph.D.	8	10	10	14	17
<b>Special Education</b>					
B.S.	8	13	6	3	0
M.S.	11	9	10	12	12
<b>Total Bachelors</b>	<b>70</b>	<b>75</b>	<b>81</b>	<b>89</b>	<b>85</b>
<b>Total Masters</b>	<b>99</b>	<b>102</b>	<b>129</b>	<b>110</b>	<b>124</b>
<b>Total Educational Specialist</b>	<b>7</b>	<b>9</b>	<b>4</b>	<b>2</b>	<b>16</b>
<b>Total Doctoral</b>	<b>14</b>	<b>17</b>	<b>21</b>	<b>24</b>	<b>22</b>

**Degrees Granted by College and Department**  
**July 1, 2007 to June 30, 2012**  
 (continued)

**College of Health and Human Services**

	<u>2007-08</u>	<u>2008-09</u>	<u>2009-10</u>	<u>2010-11</u>	<u>2011-12</u>
<b>Health and Physical Education</b>					
B.S.	17	15	16	25	30
M.S.	0	4	4	1	2
<b>Nursing</b>					
B.A.	0	2	3	2	0
B.S.	0	0	0	1	1
B.S.N.	33	27	23	23	18
M.P.A.	6	9	6	2	4
M.S.	3	7	8	0	1
<b>Nutrition and Dietetics</b>					
B.S.	21	23	22	32	30
M.S.	3	14	10	7	9
<b>Physician Assistant</b>					
B.S.	8	10	15	0	0
M.S.	29	27	28	29	29
<b>Social Work/Administrative Studies</b>					
B.A.	0	0	0	0	6
B.S.W.	13	6	10	12	14
M.H.S.A.	5	6	4	9	13
M.P.A.				7	7
M.S.				2	1
M.S.W.	118	125	117	113	124
<b>Total Bachelors</b>	<b>92</b>	<b>83</b>	<b>89</b>	<b>95</b>	<b>99</b>
<b>Total Masters</b>	<b>164</b>	<b>192</b>	<b>177</b>	<b>170</b>	<b>190</b>

**Degrees Granted by College and Department**  
**July 1, 2007 to June 30, 2012**  
 (continued)

**College of Liberal Arts and Sciences**

	<u>2007-08</u>	<u>2008-09</u>	<u>2009-10</u>	<u>2010-11</u>	<u>2011-12</u>
<b>Business and Managerial Science</b>					
B.A.	0	0	1	0	0
B.B.A.	40	53	54	68	64
B.S.	1	0	0	0	0
M.B.A.	15	18	13	22	17
M.S.	0	0	0	0	1
<b>English</b>					
B.A.	20	23	19	13	19
<b>Foreign Languages</b>					
B.A.	5	5	2	4	2
<b>Mathematics</b>					
B.S.	1	4	4	5	3
<b>Philosophy</b>					
B.A.	0	0	0	1	3
<b>Religious Studies</b>					
B.A.	1	2	0	2	2
<b>Science</b>					
B (Pre PA)	0	1	0	0	0
B.S.	10	21	29	50	51
M.S.	7	6	11	8	17
<b>Social Sciences</b>					
B.A.	22	25	25	32	40
B.S.	0	0	0	0	1
M.S.	10	3	11	7	8
<b>Ad Hoc</b>					
B.A.	0	0	0	1	0
<b>Total Bachelors</b>	<b>100</b>	<b>134</b>	<b>135</b>	<b>176</b>	<b>185</b>
<b>Total Masters</b>	<b>32</b>	<b>27</b>	<b>33</b>	<b>37</b>	<b>43</b>

**University Overall**

	<u>2007-08</u>	<u>2008-09</u>	<u>2009-10</u>	<u>2010-11</u>	<u>2011-12</u>
<b>Total Bachelors Awarded</b>	<b>355</b>	<b>400</b>	<b>418</b>	<b>478</b>	<b>487</b>
<b>Total Masters Awarded</b>	<b>364</b>	<b>380</b>	<b>388</b>	<b>371</b>	<b>405</b>
<b>Total Educational Specialist Awarded</b>	<b>7</b>	<b>9</b>	<b>4</b>	<b>2</b>	<b>16</b>
<b>Total Doctoral Awarded</b>	<b>14</b>	<b>17</b>	<b>21</b>	<b>23</b>	<b>22</b>
<b>Total All Degrees Awarded</b>	<b>740</b>	<b>806</b>	<b>831</b>	<b>874</b>	<b>930</b>

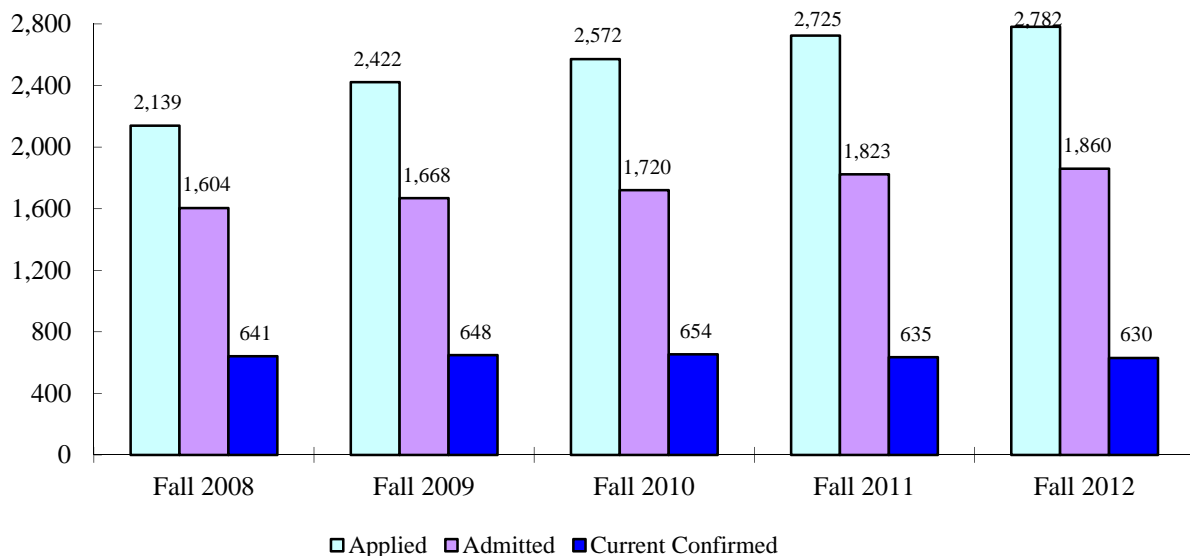
## Admissions Activity

### Undergraduate

#### Fall Full- and Part-time New Students

	2008	2009	2010	2011	2012	2008-12 % change
<b>Applied</b>	<b>2,139</b>	<b>2,422</b>	<b>2,572</b>	<b>2,725</b>	<b>2,782</b>	<b>30.1</b>
Freshman	1,774	1,923	2,062	2,203	2,284	28.7
Transfer	356	481	492	508	498	39.9
Other	9	18	18	14	0	
<b>Offered Admission</b>	<b>1,604</b>	<b>1,668</b>	<b>1,720</b>	<b>1,823</b>	<b>1,860</b>	<b>16.0</b>
Freshman	1,377	1,392	1,455	1,543	1,578	14.6
Transfer	222	261	257	272	282	27.0
Other	5	15	8	8	0	
<b>Offer Rate</b>	<b>75.0%</b>	<b>68.9%</b>	<b>66.9%</b>	<b>66.9%</b>	<b>66.9%</b>	
Freshman	77.6%	72.3%	70.6%	70.0%	69.1%	
Transfer	62.4%	54.3%	52.2%	53.5%	56.6%	
Other	55.6%	83.3%	44.4%	57.1%		
<b>Current Confirmed</b>	<b>641</b>	<b>648</b>	<b>654</b>	<b>635</b>	<b>630</b>	<b>-1.7</b>
Freshman	487	473	507	466	472	-3.1
Transfer	150	162	144	164	158	5.3
Other	4	13	3	5	0	
<b>Yield Rate</b>	<b>40.0%</b>	<b>38.8%</b>	<b>38.0%</b>	<b>34.8%</b>	<b>33.9%</b>	
Freshman	35.4%	34.0%	34.8%	30.2%	29.9%	
Transfer	67.6%	62.1%	56.0%	60.3%	56.0%	
Other	80.0%	86.7%	37.5%	62.5%		

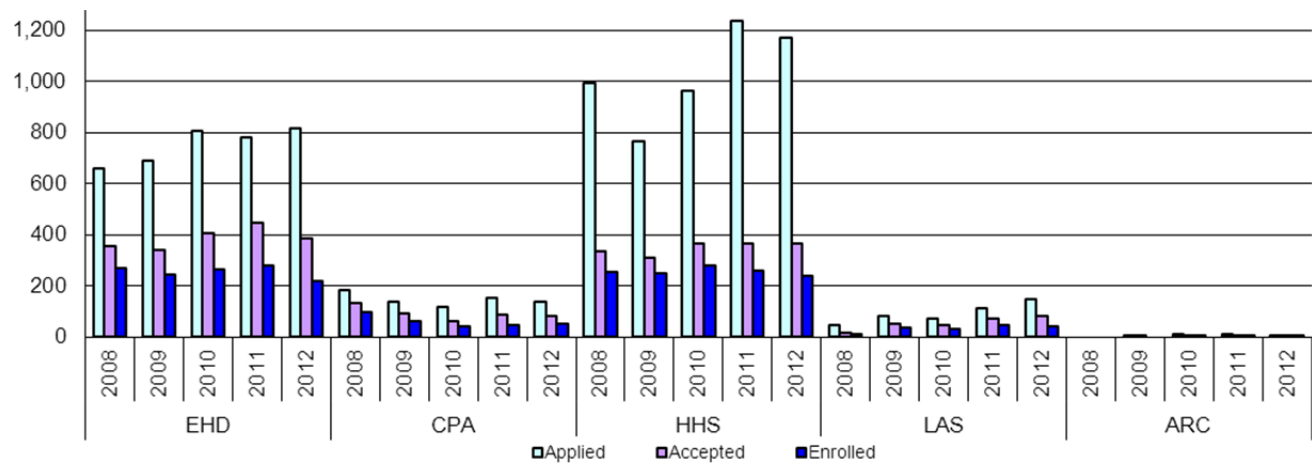
**Trends in Undergraduate Admissions Activity**  
**Fall 2008 to Fall 2012**



**Admissions Activity** (continued)  
**Graduate**  
**Full- and Part-time New Students (by calendar year)**

	2008	2009	2010	2011	2012	
<b>CPA<sup>1</sup></b>						
Applied	183	140	117	152	not available	
Accepted	135	91	65	87	82	
Enrolled	99	65	45	50	51	
<b>EHD</b>						
Applied	660	693	809	783	not available	
Accepted	357	343	409	448	386	
Enrolled	269	245	264	281	222	
<b>HHS</b>						
Applied	993	767	964	1,236	not available	
Accepted	338	310	366	365	367	
Enrolled	257	250	280	263	239	
<b>LAS<sup>2</sup></b>						
Applied	47	82	71	115	not available	
Accepted	19	53	48	75	81	
Enrolled	14	40	35	50	45	
<b>ARC<sup>3</sup></b>						
Applied		4	13	12	not available	
Accepted		2	9	9	8	
Enrolled		0	9	8	4	
<b>TOTAL</b>						<b>2008-12 % change</b>
<b>Applied</b>	<b>1,883</b>	<b>1,686</b>	<b>1,974</b>	<b>2,298</b>	<b>not available</b>	<b>21.3</b>
<b>Accepted</b>	<b>849</b>	<b>799</b>	<b>897</b>	<b>989</b>	<b>924</b>	<b>8.8</b>
<b>Enrolled</b>	<b>639</b>	<b>600</b>	<b>633</b>	<b>652</b>	<b>561</b>	<b>-12.2</b>

**Graduate Admissions Funnel by College/School**  
**2008 - 2012**



<sup>1</sup> As of July 1, 2009, the Business Department was moved from CAM to LAS and CAM was renamed CPA. The School of Architecture (ARC) was opened and the BFA Design (Interior Design) and MA Studio Art (Interior Architecture) programs were moved from the Art Department in CAM to ARC.

<sup>2</sup> As of July 1, 2009, the Business Department was moved from CAM to LAS.

<sup>3</sup> As of July 1, 2009, the School of Architecture (ARC) was opened and the BFA Design (Interior Design) and MA Studio Art (Interior Architecture) programs were moved from the Art Department in CAM to ARC.

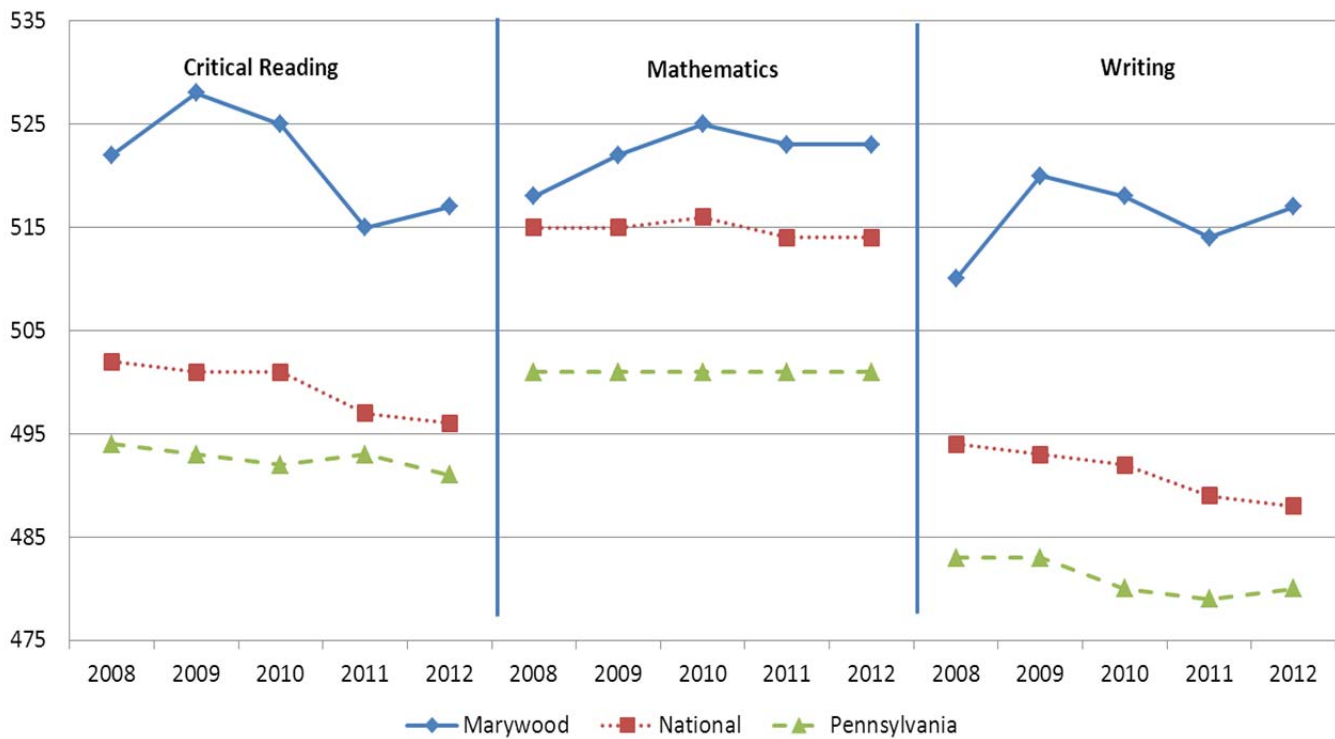


### Average SAT Scores for First-time Full-time Freshmen

	Critical Reading*	Math	Reading + Math	Writing
Fall '06	513	514	1027	
Fall '07	521	517	1038	512
Fall '08	522	518	1039	510
Fall '09	528	522	1050	520
Fall '10	525	525	1050	518
Fall '11	515	523	1038	514
Fall '12	517	523	1040	517

\* Prior to Fall 2007, old SAT Verbal score

### Trends in SAT Scores of First-time Full-time Students



## Fall Headcount and FTE\* Enrollment by College and Time Status

### Insalaco College of Creative and Performing Arts<sup>4</sup>

	2008	2009	2010	2011	2012
Undergraduate					
FT	430	430	438	396	375
PT	<u>25</u>	<u>16</u>	<u>25</u>	<u>11</u>	<u>21</u>
Total	<b>455</b>	<b>446</b>	<b>463</b>	<b>407</b>	<b>396</b>
FTE – Internal	440.0	435.9	447.8	400.1	382.2
FTE – IPEDS	438.3	435.3	446.3	399.7	382.0
Graduate					
FT	61	62	68	49	44
PT	<u>97</u>	<u>96</u>	<u>71</u>	<u>68</u>	<u>55</u>
Total	<b>168</b>	<b>158</b>	<b>139</b>	<b>117</b>	<b>99</b>
FTE – Internal	98.2	98.5	95.6	72.7	64.2
FTE – IPEDS	93.3	94.0	91.7	71.7	62.3
Total					
FT	491	492	506	445	419
PT	<u>122</u>	<u>112</u>	<u>96</u>	<u>79</u>	<u>76</u>
Total	<b>613</b>	<b>604</b>	<b>602</b>	<b>524</b>	<b>494</b>
FTE – Internal	538.2	534.4	543.4	472.8	446.4
FTE – IPEDS	531.7	529.3	538.0	471.3	444.3

### Reap College of Education and Human Development

	2008	2009	2010	2011	2012
Undergraduate					
FT	370	381	382	363	342
PT	<u>5</u>	<u>7</u>	<u>9</u>	<u>11</u>	<u>6</u>
Total	<b>375</b>	<b>388</b>	<b>391</b>	<b>374</b>	<b>348</b>
FTE – Internal	372.0	383.5	385.3	367.5	344.9
FTE – IPEDS	371.7	383.3	385.0	366.7	344.0
Graduate					
FT	199	172	196	200	202
PT	<u>342</u>	<u>370</u>	<u>283</u>	<u>256</u>	<u>207</u>
Total	<b>541</b>	<b>542</b>	<b>479</b>	<b>456</b>	<b>409</b>
FTE – Internal	321.6	306.2	300.8	291.0	276.3
FTE – IPEDS	313.0	295.3	290.3	285.3	271.0
Total					
FT	569	553	578	563	544
PT	<u>347</u>	<u>377</u>	<u>292</u>	<u>267</u>	<u>213</u>
Total	<b>916</b>	<b>930</b>	<b>870</b>	<b>830</b>	<b>758</b>
FTE – Internal	693.6	689.7	686.1	658.6	621.2
FTE – IPEDS	684.7	678.7	675.3	652.0	615.0

\* FTE Internal = FT headcount + (PT credits/15 for undergraduate or PT credits/12 for graduate)

FTE IPEDS = FT headcount + PT headcount/3

<sup>4</sup> As of July 1, 2009, the Business Department was moved from CAM to LAS and CAM was renamed CPA. The School of Architecture (ARC) was opened and the BFA Design (Interior Design) and MA Studio Art (Interior Architecture) programs were moved from the Art Department in CAM to ARC.

## Fall Headcount and FTE\* Enrollment by College and Time Status

(continued)

### College of Health and Human Services

	<u>2008</u>	<u>2009</u>	<u>2010</u>	<u>2011</u>	<u>2012</u>
Undergraduate					
FT	357	361	402	412	390
PT	<u>17</u>	<u>21</u>	<u>17</u>	<u>18</u>	<u>22</u>
Total	<b>374</b>	<b>382</b>	<b>419</b>	<b>430</b>	<b>412</b>
FTE – Internal	364.5	369.8	411.5	420.5	398.7
FTE – IPEDS	362.7	368.0	407.7	418.0	397.3
Graduate					
FT	277	278	316	288	304
PT	<u>246</u>	<u>224</u>	<u>190</u>	<u>193</u>	<u>136</u>
Total	<b>523</b>	<b>502</b>	<b>506</b>	<b>481</b>	<b>440</b>
FTE – Internal	385.2	379.3	397.8	376.5	363.8
FTE – IPEDS	359.0	352.7	379.3	352.3	349.3
Total					
FT	634	639	718	700	694
PT	<u>263</u>	<u>245</u>	<u>207</u>	<u>211</u>	<u>158</u>
Total	<b>897</b>	<b>884</b>	<b>925</b>	<b>911</b>	<b>852</b>
FTE – Internal	749.7	749.1	809.3	797.1	762.5
FTE – IPEDS	721.7	720.7	787.0	770.3	746.7

### College of Liberal Arts and Sciences<sup>5</sup>

	<u>2008</u>	<u>2009</u>	<u>2010</u>	<u>2011</u>	<u>2012</u>
Undergraduate					
FT	714	766	731	748	745
PT	<u>58</u>	<u>52</u>	<u>55</u>	<u>44</u>	<u>42</u>
Total	<b>772</b>	<b>818</b>	<b>786</b>	<b>792</b>	<b>787</b>
FTE – Internal	736.6	785.3	751.4	763.9	763.1
FTE – IPEDS	733.3	783.3	749.3	762.7	759.0
Graduate					
FT	19	26	30	37	28
PT	<u>56</u>	<u>57</u>	<u>51</u>	<u>43</u>	<u>41</u>
Total	<b>75</b>	<b>83</b>	<b>81</b>	<b>80</b>	<b>69</b>
FTE – Internal	40.3	47.7	50.3	53.9	43.9
FTE – IPEDS	22.2	45.0	47.0	51.3	41.7
Total					
FT	733	792	761	785	773
PT	<u>114</u>	<u>109</u>	<u>106</u>	<u>87</u>	<u>83</u>
Total	<b>847</b>	<b>901</b>	<b>867</b>	<b>872</b>	<b>856</b>
FTE	776.9	833.0	801.7	817.8	807.0
FTE – IPEDS	771.0	828.3	796.3	814.0	800.7

\* FTE Internal = FT headcount + (PT credits/15 for undergraduate or PT credits/12 for graduate)

FTE IPEDS = FT headcount + PT headcount/3

<sup>5</sup> As of July 1, 2009, the Business Department was moved from CAM to LAS and CAM was renamed CPA.

**Fall Headcount and FTE\* Enrollment by College and Time Status**  
(continued)

**School of Architecture<sup>6</sup>**

	2008	2009	2010	2011	2012
<b>Undergraduate</b>					
FT	60	112	146	187	230
PT	<u>3</u>	<u>4</u>	<u>1</u>	<u>2</u>	<u>1</u>
Total	<b>63</b>	<b>116</b>	<b>147</b>	<b>189</b>	<b>231</b>
FTE – Internal	60.3	113.0	146.6	189.0	230.7
FTE – IPEDS	61.0	113.3	146.3	189.0	230.3
<b>Graduate</b>					
FT	1	0	6	8	6
PT	<u>9</u>	<u>2</u>	<u>1</u>	<u>1</u>	<u>0</u>
Total	<b>10</b>	<b>2</b>	<b>7</b>	<b>9</b>	<b>6</b>
FTE – Internal	6.4	1.0	6.5	8.5	6.0
FTE – IPEDS	4.0	0.67	6.3	8.3	6.0
<b>Total</b>					
FT	61	112	152	195	236
PT	<u>12</u>	<u>6</u>	<u>2</u>	<u>3</u>	<u>1</u>
Total	<b>73</b>	<b>118</b>	<b>154</b>	<b>198</b>	<b>237</b>
FTE – Internal	66.7	114.0	153.1	197.5	236.7
FTE – IPEDS	65.0	114.0	152.7	197.3	236.3

**Registrar**

	2008	2009	2010	2011	2012
<b>Undergraduate</b>					
FT	0	3	7	2	25
PT	<u>32</u>	<u>31</u>	<u>54</u>	<u>61</u>	<u>45</u>
Total	<b>32</b>	<b>34</b>	<b>61</b>	<b>63</b>	<b>70</b>
FTE – Internal	4.3	9.1	17.9	12.4	35.8
FTE – IPEDS	10.7	13.3	25.0	22.3	40.0

\* FTE Internal = FT headcount + (PT credits/15 for undergraduate or PT credits/12 for graduate)

FTE IPEDS = FT headcount + PT headcount/3

<sup>6</sup> As of July 1, 2009, the School of Architecture (ARC) was opened and the BFA Design (Interior Design) and MA Studio Art (Interior Architecture) programs were moved from the Art Department in CAM to ARC.

**Fall Headcount and FTE\* Enrollment by College and Time Status**  
(continued)

**Total University**

	<u>2008</u>	<u>2009</u>	<u>2010</u>	<u>2011</u>	<u>2012</u>
Undergraduate					
FT	1,933	2,053	2,106	2,110	2,107
PT	<u>138</u>	<u>131</u>	<u>161</u>	<u>145</u>	<u>137</u>
<b>Total</b>	<b>2,071</b>	<b>2,184</b>	<b>2,267</b>	<b>2,255</b>	<b>2,244</b>
FTE – Internal	1,978.9	2,096.6	2,160.6	2,153.5	2,155.4
FTE – IPEDS	1,977.7	2,096.7	2,159.7	2,158.3	2,152.7
Graduate					
FT	557	538	616	582	584
PT	<u>750</u>	<u>749</u>	<u>596</u>	<u>561</u>	<u>439</u>
<b>Total</b>	<b>1,307</b>	<b>1,287</b>	<b>1,212</b>	<b>1,143</b>	<b>1,023</b>
FTE – Internal	850.5	832.7	850.1	802.7	754.2
FTE – IPEDS	807.0	787.7	814.7	769.0	730.3
Total					
FT	2,488	2,591	2,722	2,692	2,691
PT	<u>890</u>	<u>880</u>	<u>757</u>	<u>706</u>	<u>576</u>
<b>Total</b>	<b>3,378</b>	<b>3,471</b>	<b>3,479</b>	<b>3,398</b>	<b>3,267</b>
FTE – Internal	2,829.4	2,929.3	3,011.5	2,956.2	2,909.6
FTE – IPEDS	2,784.7	2,884.3	2,974.3	2,927.3	2,883.0

\* FTE Internal = FT headcount + (PT credits/15 for undergraduate or PT credits/12 for graduate)  
FTE IPEDS = FT headcount + (PT headcount/3)

## Fall Headcount Enrollment by College and Ethnicity/Race<sup>7</sup>

	2008	2009	2010	2011	2012
<b>Insalaco College of Creative and Performing Arts<sup>8</sup></b>					
Hispanic	15	18	20	18	20
White	512	501	510	431	399
Other/Unknown	77	82	69	68	70
Two or more				3	2
Non-resident Alien	9	3	3	4	4
<b>Reap College of Education and Human Development</b>					
Hispanic	14	16	18	14	17
White	786	809	768	719	624
Other/Unknown	109	101	77	84	106
Two or more				5	3
Non-resident Alien	7	4	7	8	7
<b>College of Health and Human Services</b>					
Hispanic	23	31	27	27	26
White	747	720	753	724	603
Other/Unknown	118	120	134	152	207
Two or more				3	2
Non-resident Alien	9	13	11	5	14
<b>College of Liberal Arts and Sciences<sup>9</sup></b>					
Hispanic	29	28	34	38	48
White	681	750	743	708	668
Other/Unknown	124	110	77	114	125
Two or more				2	8
Non-resident Alien	13	13	13	10	7
<b>School of Architecture</b>					
Hispanic	3	5	5	11	13
White	61	99	131	163	193
Other/Unknown	8	14	18	23	28
Two or more				1	1
Non-resident Alien	1	0	0	0	2
<b>Registrar</b>					
Hispanic	0	0	1	1	0
White	10	6	24	24	16
Other/Unknown	11	22	20	23	33
Non-resident Alien	11	6	16	15	21

<sup>7</sup> As of July 1, 2011, expanded IPEDS category, Race/Ethnicity, included "Two or more"

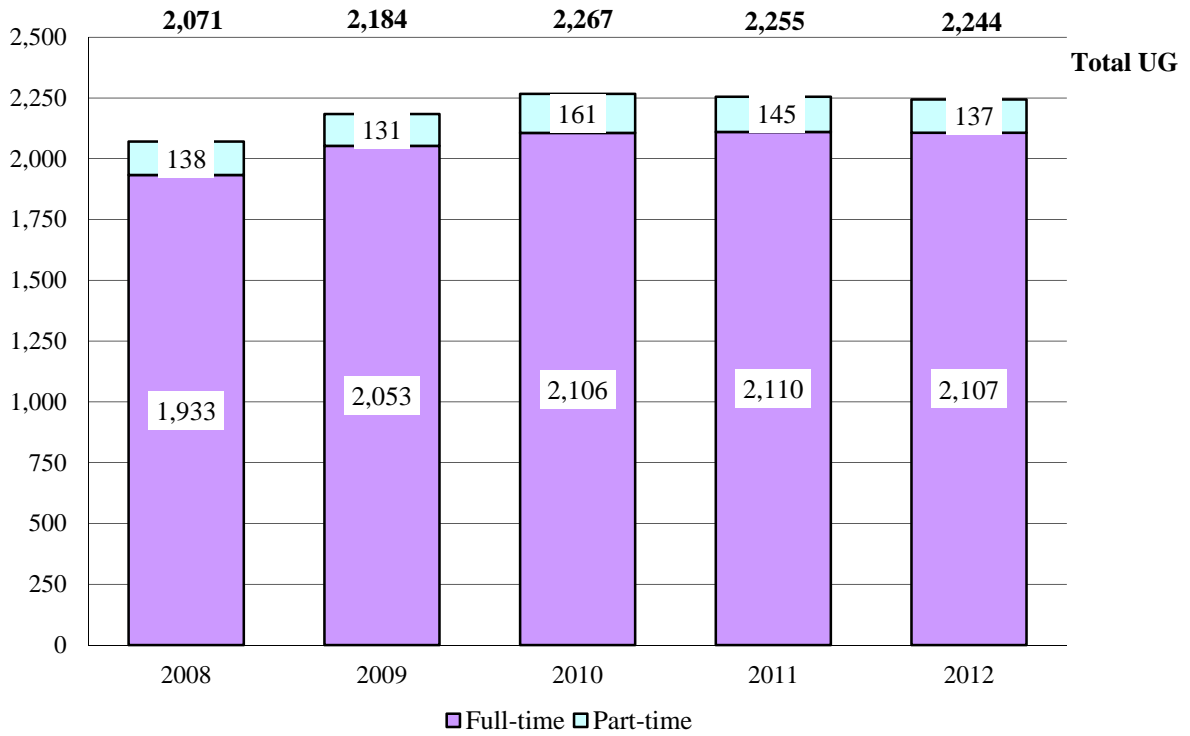
<sup>8</sup> As of July 1, 2009, the Business Department was moved from CAM to LAS and CAM was renamed to CPA. The School of Architecture (ARC) was opened and the BFA Design (Interior Design) and MA Studio Art (Interior Architecture) programs were moved from the Art Department in CAM to ARC.

<sup>9</sup> As of July 1, 2009, the Business Department was moved from CAM to LAS.

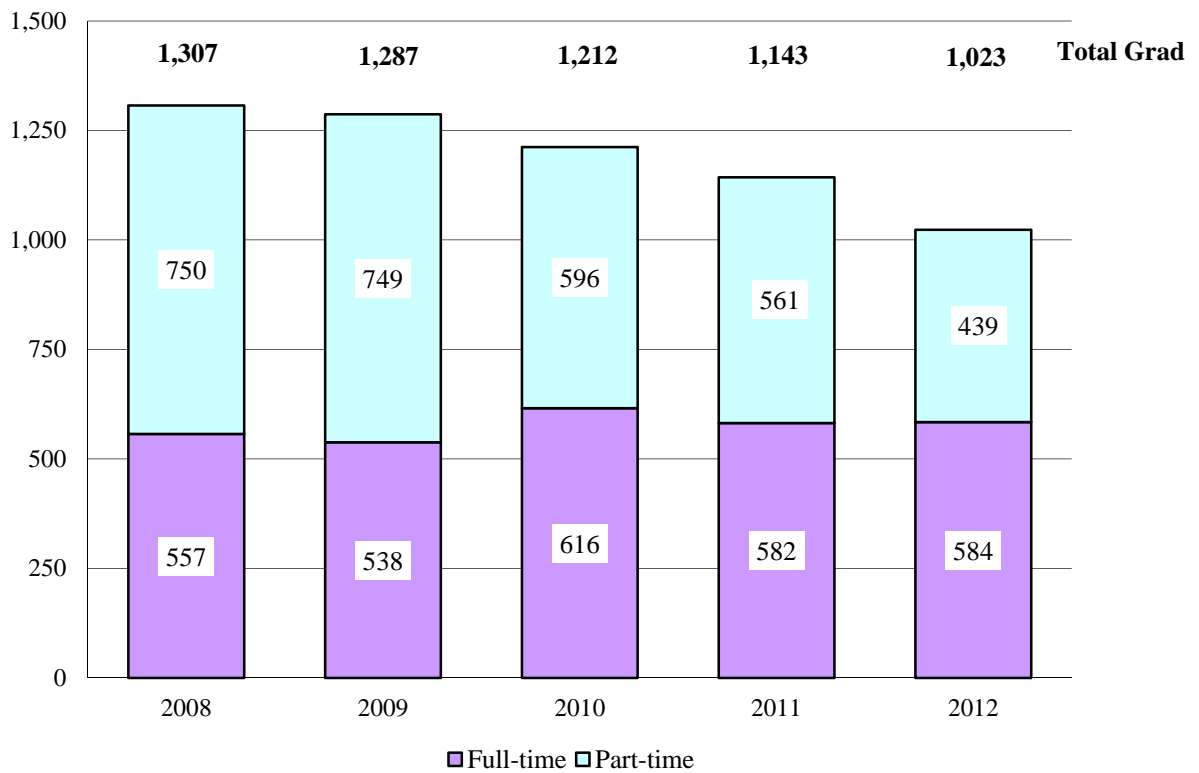
**Fall Headcount Enrollment by College and Ethnicity/Race** (continued)

	2008	2009	2010	2011	2012
<b>TOTAL UNDERGRADUATE</b>					
Hispanic	56	60	71	81	105
White	1,725	1,857	1,950	1,877	1,806
Other/Unknown	257	244	215	263	286
Two or more				8	16
Non-resident Alien	33	23	31	25	31
<b>TOTAL GRADUATE</b>					
Hispanic	28	38	34	28	19
White	1,072	1,028	979	892	697
Other/Unknown	190	205	180	200	283
Two or more				6	0
Non-resident Alien	17	16	19	17	24
<b>TOTAL UNIVERSITY</b>					
Hispanic	84	98	105	109	124
White	2,797	2,885	2,929	2,769	2,503
Other/Unknown	447	449	395	464	569
Two or more				14	16
Non-resident Alien	50	39	50	42	55

### Trends in Total Undergraduate Enrollment Fall 2008 to Fall 2012



### Trends in Total Graduate Enrollment Fall 2008 to Fall 2012





**Headcount Enrollment by College, Department and Level – Fall 2008 to Fall 2012**

		2008	2009	2010	2011	2012
<b>Insalaco College of Creative and Performing Arts<sup>10</sup></b>						
Art <sup>11</sup>	Undergraduate	301	286	296	251	228
	Graduate	87	95	91	77	65
Communication Arts <sup>12</sup>	Undergraduate	68	70	73	76	82
	Graduate	46	42	34	28	25
Music, Theatre & Dance <sup>13</sup>	Undergraduate	86	90	91	76	84
	Graduate	14	11	8	5	3
Dean/Academic Advising <sup>14</sup>	Undergraduate	0	0	3	4	2
	Graduate	11	10	6	7	6
<b>Reap College of Education and Human Development</b>						
Communication Disorders	Undergraduate	73	77	85	77	83
	Graduate	40	30	20	29	24
Counseling/Psychology	Undergraduate	118	117	121	126	131
	Graduate	168	168	163	168	166
Education <sup>15</sup>	Undergraduate	146	152	149	150	115
	Graduate	220	212	195	169	127
Human Development	Graduate	93	99	87	76	70
Dean/Academic Advising	Undergraduate	38	42	36	21	19
	Graduate	20	33	14	14	22

<sup>10</sup> As of July 1, 2009, the Business Department was moved from CAM to LAS and CAM was renamed CPA. The School of Architecture (SOA) was opened and the BFA Design (Interior Design) and MA Studio Art (Interior Architecture) programs were moved from the Art Department in CAM to ARC.

<sup>11</sup> As of July 1, 2009, the School of Architecture (ARC) was opened and the BFA Design (Interior Design) and MA Studio Art (Interior Architecture) programs were moved from the Art Department in CAM to ARC.

<sup>12</sup> As of July 1, 2009 the BA Theatre program was moved from the Communication Arts Department to the Music Department and the BA Musical Theatre program was moved from the Dean to the Department of Music, Theatre & Dance.

<sup>13</sup> As of July 1, 2009, the BA Theatre program was moved from the Communication Arts Department to the Music, Theatre & Dance Department and the BA Musical Theatre program was moved from the Dean of CAM to the Department of Music, Theatre & Dance.

<sup>14</sup> As of July 1, 2009, the BA Musical Theatre program was moved from the Dean of CAM to the Department of Music, Theatre & Dance.

<sup>15</sup> As of July 1, 2011, Special Education is part of the Education Department.

**Headcount by College, Department and Level – Fall 2008 to Fall 2012**

(continued)

		2008	2009	2010	2011	2012
<b>College of Health and Human Services</b>						
Health & Physical Education	Undergraduate	99	105	112	116	92
	Graduate	8	5	4	2	14
Nursing <sup>16</sup>	Undergraduate	113	104	109	115	123
	Graduate	13	7	3	2	1
Nutrition and Dietetics	Undergraduate	115	112	125	137	128
	Graduate	68	49	60	62	55
Physician Assistant	Graduate	43	45	51	54	62
School of Social Work and Administrative Studies <sup>17</sup>	Undergraduate	45	52	61	59	57
	Graduate	367	371	372	341	284
Dean/Academic Advising	Undergraduate	2	9	12	3	12
	Graduate	24	25	16	20	24
<b>College of Liberal Arts and Sciences<sup>18</sup></b>						
Business	Undergraduate	236	247	252	228	234
	Graduate	43	45	45	42	43
English	Undergraduate	85	68	57	59	54
Foreign Languages	Undergraduate	14	9	12	17	17
Mathematics	Undergraduate	31	26	25	25	22
Philosophy	Undergraduate	2	1	6	3	2
Religious Studies	Undergraduate	4	3	3	3	5
Science	Undergraduate	174	214	214	224	221
	Graduate	8	8	11	14	6
Social Science	Undergraduate	130	137	137	135	115
	Graduate	18	28	21	16	17
Dean/Academic Advising	Undergraduate	96	113	80	98	117
	Graduate	6	2	4	8	3
<b>School of Architecture<sup>19</sup></b>						
Environmental Design	Undergraduate		49	88	120	159
Interior Architecture	Undergraduate	63	67	59	69	72
	Graduate	10	2	7	9	6
<b>Registrar</b>						
	IEP	11	6	16	15	23
	Undergraduate	21	28	45	48	47

<sup>16</sup> As of July 1, 2011, the MPA Public Administration program and the BA and MHSA Health Services Administration programs were moved from the Nursing department to the School of Social Work and Administrative Studies.

<sup>17</sup> Ibid.

<sup>18</sup> As of July 1, 2009, the Business Department was moved from CAM to LAS.

<sup>19</sup> As of July 1, 2009, the School of Architecture (ARC) was opened and the BFA Design (Interior Design) and the MA Studio Art (Interior Architecture) programs were moved from the Art Department in CAM to ARC.

## Headcount Enrollment by College and Gender

	2008	2009	2010	2011	2012	
					N	%
<b>Insalaco College of Creative and Performing Arts<sup>20</sup></b>						
Undergraduate						
Women	327	321	340	301	306	77.3
Men	<u>128</u>	<u>125</u>	<u>123</u>	<u>106</u>	<u>90</u>	22.7
<b>Total</b>	<b>455</b>	<b>446</b>	<b>463</b>	<b>407</b>	<b>396</b>	
Graduate						
Women	112	112	102	79	75	75.8
Men	<u>46</u>	<u>46</u>	<u>37</u>	<u>38</u>	<u>24</u>	24.2
<b>Total</b>	<b>158</b>	<b>158</b>	<b>139</b>	<b>117</b>	<b>99</b>	
<b>Reap College of Education and Human Development</b>						
Undergraduate						
Women	321	345	354	339	313	89.9
Men	<u>54</u>	<u>43</u>	<u>37</u>	<u>35</u>	<u>35</u>	10.1
<b>Total</b>	<b>375</b>	<b>388</b>	<b>391</b>	<b>374</b>	<b>348</b>	
Graduate						
Women	429	446	386	354	328	80.2
Men	<u>112</u>	<u>96</u>	<u>93</u>	<u>102</u>	<u>81</u>	19.8
<b>Total</b>	<b>541</b>	<b>542</b>	<b>479</b>	<b>456</b>	<b>409</b>	
<b>College of Health and Human Services</b>						
Undergraduate						
Women	286	294	323	323	319	77.4
Men	<u>88</u>	<u>88</u>	<u>96</u>	<u>107</u>	<u>93</u>	22.6
<b>Total</b>	<b>374</b>	<b>382</b>	<b>419</b>	<b>430</b>	<b>412</b>	
Graduate						
Women	435	422	419	410	368	83.6
Men	<u>88</u>	<u>80</u>	<u>87</u>	<u>71</u>	<u>72</u>	16.4
<b>Total</b>	<b>523</b>	<b>502</b>	<b>506</b>	<b>481</b>	<b>440</b>	
<b>College of Liberal Arts and Sciences<sup>21</sup></b>						
Undergraduate						
Women	435	460	437	456	446	56.7
Men	<u>337</u>	<u>358</u>	<u>349</u>	<u>336</u>	<u>341</u>	43.3
<b>Total</b>	<b>772</b>	<b>818</b>	<b>786</b>	<b>792</b>	<b>787</b>	
Graduate						
Women	37	41	46	44	28	40.6
Men	<u>38</u>	<u>42</u>	<u>35</u>	<u>36</u>	<u>41</u>	59.4
<b>Total</b>	<b>75</b>	<b>83</b>	<b>81</b>	<b>80</b>	<b>69</b>	

(continued)

<sup>20</sup> As of July 1, 2009, the Business Department was moved from CAM to LAS and CAM was renamed CPA. The School of Architecture (ARC) was opened and the BFA Design (Interior Design) and MA Studio Art (Interior Architecture) programs were moved from the Art Department in CAM to ARC.

<sup>21</sup> As of July 1, 2009, the Business Department was moved from CAM to LAS.

**Headcount Enrollment by College and Gender**

(continued)

	2008	2009	2010	2011	2012	
					N	%
<b>School of Architecture<sup>22</sup></b>						
Undergraduate						
Women	58	76	85	106	122	52.8
Men	<u>5</u>	<u>40</u>	<u>62</u>	<u>83</u>	<u>109</u>	47.2
<b>Total</b>	<b>63</b>	<b>116</b>	<b>147</b>	<b>189</b>	<b>231</b>	
Graduate						
Women	9	2	7	8	6	100.0
Men	<u>1</u>	<u>0</u>	<u>0</u>	<u>1</u>	<u>0</u>	0.0
<b>Total</b>	<b>10</b>	<b>2</b>	<b>7</b>	<b>9</b>	<b>6</b>	
<b>Registrar</b>						
Undergraduate						
Women	22	23	42	33	44	62.9
Men	<u>10</u>	<u>11</u>	<u>19</u>	<u>30</u>	<u>26</u>	37.1
<b>Total</b>	<b>32</b>	<b>34</b>	<b>61</b>	<b>63</b>	<b>70</b>	
<b>Total University</b>						
Undergraduate						
Women	1,449	1,519	1,581	1,558	1,550	69.1
Men	<u>622</u>	<u>665</u>	<u>686</u>	<u>697</u>	<u>694</u>	30.9
<b>Total</b>	<b>2,071</b>	<b>2,184</b>	<b>2,267</b>	<b>2,255</b>	<b>2,244</b>	
Graduate						
Women	1,022	1,023	960	895	805	79.7
Men	<u>285</u>	<u>264</u>	<u>252</u>	<u>248</u>	<u>218</u>	21.3
<b>Total</b>	<b>1,307</b>	<b>1,287</b>	<b>1,212</b>	<b>1,143</b>	<b>1,023</b>	

<sup>22</sup> As of July 1, 2009, the School of Architecture (SOA) was opened and the BFA Design (Interior Design) and MA Studio Art (Interior Architecture) programs were moved from the Art Department in CAM to SOA.

## Fall Full-time Undergraduate Enrollment by On/Off-Campus Living

		Fall 2008	Fall 2009	Fall 2010	Fall 2011	Fall 2012
<b>On-Campus</b>						
Freshmen		423	386	388	393	371
Total	Women	694	703	764	783	771
	Men	<u>246</u>	<u>259</u>	<u>249</u>	<u>282</u>	<u>253</u>
	<b>Total</b>	<b>940</b>	<b>962</b>	<b>1,013</b>	<b>1,065</b>	<b>1,024</b>
Percent of Total Full-time		49%	47%	48%	50%	49%
<b>Off-Campus</b>						
Full-time	Women	666	731	708	695	699
	Men	<u>327</u>	<u>356</u>	<u>378</u>	<u>352</u>	<u>386</u>
	<b>Total</b>	<b>993</b>	<b>1,087</b>	<b>1,086</b>	<b>1,047</b>	<b>1,085</b>
Part-time	Women	89	59	66	80	80
	Men	<u>49</u>	<u>36</u>	<u>38</u>	<u>63</u>	<u>55</u>
	<b>Total</b>	<b>138</b>	<b>95</b>	<b>104</b>	<b>143</b>	<b>135</b>

### Students with Disabilities

Undergraduate: 134 (6.0%)

Graduate: 41 (4.0%)

### Study Abroad Program – Locations and Majors of Students

Studio Art Centers International	Italy	BA Art Education BA Art Therapy BFA Studio Art (Ceramics)
Queen Mary University	London	BA Communication Arts/Secondary Education (Theatre) BA English
St. Clare's	Oxford	BA English BFA Studio Art (Illustration)
University of Limerick	Ireland	BA English
Institute at Palazzo Rucellai	Italy	BEDA Environmental Design-Architecture
John Cabot University	Italy	BS Health & Physical Education (Physical Activity)
National University of Ireland - Galway	Ireland	BS Psychology

26 students are currently studying abroad

## Fall 2012 International Student Enrollment

### By Country of Origin

#### Undergraduate:

China	5
Columbia	1
Honduras	1
India	1
Japan	1
Libyan Arab Jamahiriya	1
Malaysia	2
Republic of Korea	3
Russian Federation	1
Saudi Arabia	11
South Korea	1
Taiwan	1
Tanzania	1
Trinidad & Tobago	1
<b>Total Undergraduate:</b>	<b>31 (1.4%)</b>

#### Graduate:

Canada	1
China	3
Haiti	1
India	4
Iraq	1
Kenya	2
Nigeria	1
Peru	1
Saudi Arabia	10
<b>Total Graduate:</b>	<b>24 (2.3%)</b>

### By Major Course of Study

#### Undergraduate:

Undeclared, Interest in Education  
 Undeclared, Interest in Nursing  
 BA Art Therapy  
 BBA Accounting  
 BBA International Business  
 BBA Management  
 BFA Design (Interior Architecture/Design)  
 BS Medical Laboratory Science  
 BS Nutrition and Dietetics  
 Intensive English Program  
 International Exchange

#### Graduate:

MA Art Therapy  
 MA Communication Arts (Media Management)  
 MA Psychology (Clinical Services)  
 MA Psychology (General Theoretical)  
 MA Studio Art (Interior Architecture)  
 MA Studio Art (Painting)  
 MAT Secondary/K-12 Education  
 MBA Bus Adm (General Management)  
 MEd Instructional Leadership  
 MHSA Health Services Administration  
 MPA Public Administration  
 MS Management Information Systems  
 MS Nutrition  
 MSW Social Work  
 Ph.D. Human Development (Health Promotion)

## Honors Program - Majors Represented

B Undeclared	BFA Studio Art (Painting)
B Pre-Physician Assistant Studies	BM Music Education
BA Art Education	BM Music Performance
BA Arts Admin (Art)	BM Music Therapy
BA English	BS Biology (Pre-professional)
BA English/Secondary Ed	BS Biotechnology
BA History-SocSci/Sec Ed	BS Comm Sc & Dis (Pre-pr)
BA History/Pol Sci (Pre-law)	BS Early Childhood Education
BA Philosophy	BS Elementary Education
BA Spanish	BS General Science/Sec Educ
BBA Accounting	BS Mathematics
BBA International Business	BS Mathematics/Sec Educ
BBA Management	BS Nutrition and Dietetics
BBA Marketing	BS Psychology (Clinical Prac)
BEDA Env Des-Architecture	BS Psychology
BFA Design (Graphic Design)	BS Special Education
BFA Design (Int Arch/Des)	BSN Nursing – Pre-service
BFA Studio Art (Illustration)	BSW Social Work

### Honors Courses Offered in 2012-2013

#### Fall 2012

ART	History of Art 19 <sup>th</sup> Century Art History of Graphics	ENGL	Composition Theory and Practice
BIOL	General Microbiology Biochemistry	HIST	Roots of the Modern World
BUS	Organizational Communication Operation Management/Quantitative Analysis International Finance	MATH	Linear Algebra
CSD	Audiology Communication Disorders	MUSC	History of Music I
EDUC	Educational Psychology Social Foundations	N D	Sports Nutrition
ENGL	Writing Skills Children's Literature Early Modern British Women Writers	PHIL	Introduction to Philosophy Ethics
		PSYC	General Psychology Contemporary Approaches to Learning Theories of Personality
		R ST	Modern Belief Introduction to the Bible
		SPAN	Intensive Grammar Review
		S ED	Curriculum Adaptations
		UNIV	Living Responsibly in an Interdependent World

#### Spring 2013

ARCH	Digital Media I Structures II	N D	Theory of Medicine
ART	History of Art	PHIL	Philosophy of Emotion
CSD	Articulation an Phonologic Disorders Auditory Amplification and Aural Skills	PSYC	General Psychology Developmental Psychology Psychology of Gender
EDUC	Child and the Family	R ST	Foundations of Christian Morality
ENGL	Introduction to World Literature	SPAN	Conversational Spanish Hispanic Women Writers Independent Study
HIST	Global History		
MATH	College Geometry		
MUSC	History of Music II		

85 students are enrolled in honors courses for Fall 2012

## Retention and Graduation Rates for First-Time Full-Time Freshmen by Year of Entry - Fall 2000 to Fall 2012

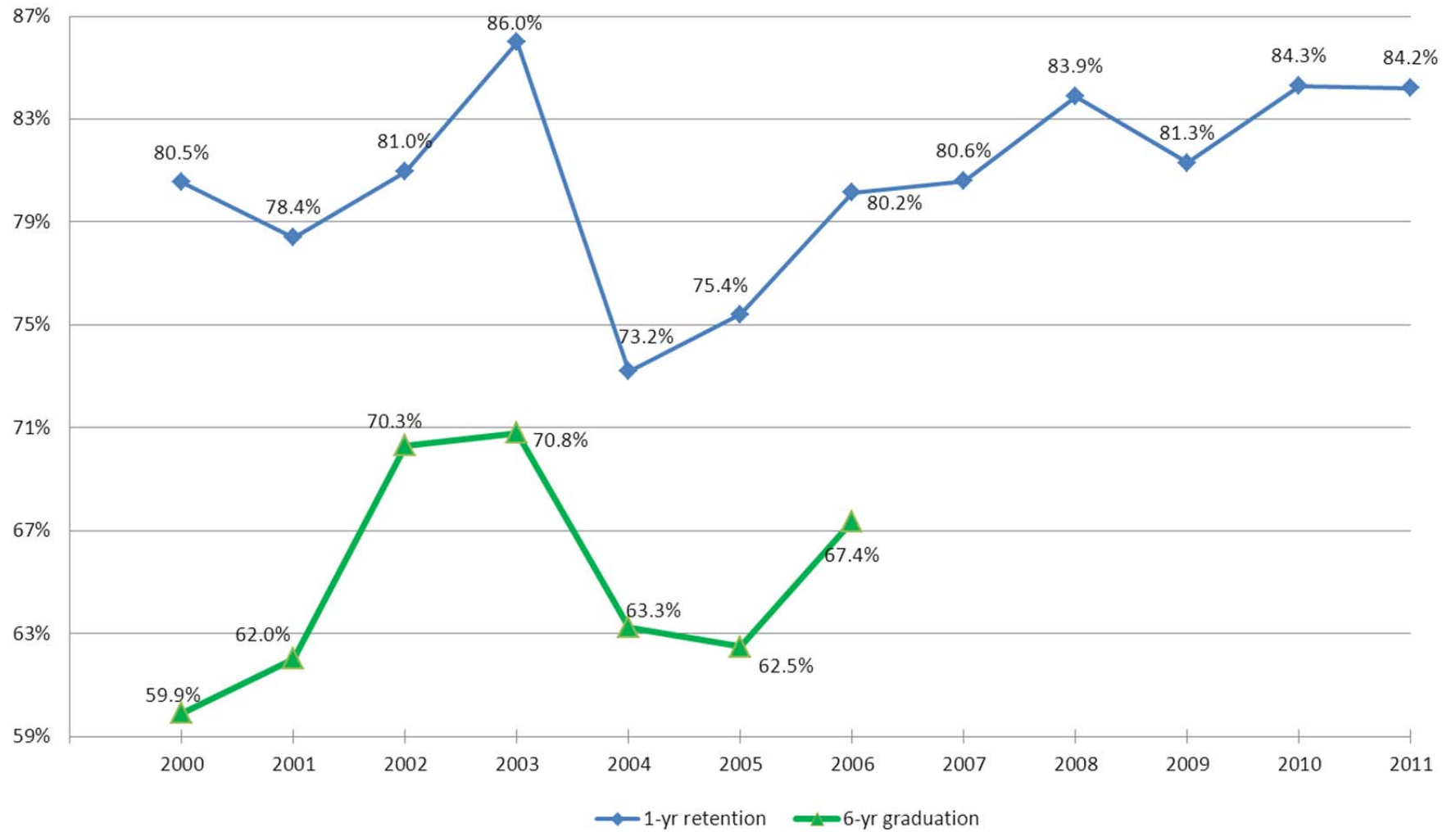
Entering Fall Term	Retention Rates								Graduation Rates			
	1st Fall	2nd Fall	3rd Fall	4th Fall	5th Fall	6th Fall	7th Fall	8th Fall	within 4 yrs	within 5 yrs	within 6 yrs	within 7 yrs
2000* N	257	207	174	163	59	11	7	3	101	150	154	157
% enrollment	100%	80.5%	67.7%	63.4%	23.0%	4.3%	2.7%	1.2%	39.3%	58.4%	59.9%	61.1%
2001 N	287	225	200	191	78	9	2	1	114	170	178	180
% enrollment	100%	78.4%	69.7%	66.6%	27.2%	3.1%	0.7%	0.3%	39.7%	59.2%	62.0%	62.7%
2002 N	310	251	225	225	58	7	2	0	166	213	218	222
% enrollment	100%	81.0%	72.6%	72.6%	18.7%	2.3%	0.6%	0.0%	53.5%	68.7%	70.3%	71.6%
2003* N	277	239	210	203	45	6	0	0	152	188	196	199
% enrollment	100%	86.3%	75.8%	73.3%	16.2%	2.2%	0.0%	0.0%	54.9%	67.9%	70.8%	71.8%
2004 N	332	243	221	216	61	11	2	2	149	200	210	211
% enrollment	100%	73.2%	66.6%	65.1%	18.4%	3.3%	0.6%	0.6%	44.9%	60.2%	63.3%	63.6%
2005* N	301	227	201	193	33	3	0	0	153	184	188	190
% enrollment	100%	75.4%	66.8%	64.1%	11.0%	1.0%	0.0%	0.0%	50.8%	61.1%	62.5%	63.1%
2006* N	383	307	285	270	67	9	5		197	254	260	
% enrollment	100%	80.2%	74.4%	70.5%	17.5%	2.3%	1.3%		51.4%	66.3%	67.9%	
2007* N	407	328	283	274	48	5			218	261		
% enrollment	100%	80.6%	69.5%	67.3%	11.8%	1.2%			53.6%	64.1%		
2008 N	422	354	306	296	51				238			
% enrollment	100%	83.9%	72.5%	70.1%	12.1%				56.4%			
2009* N	412	335	296	295					29			
% enrollment	100%	81.3%	72.3%	71.6%					7.0%			
2010* N	451	380	348									
% enrollment	100%	84.3%	77.2%									
2011 N	456	384										
% enrollment	100%	84.2%										
2012 N	452											
% enrollment	100%											

NOTE: Average graduation rate computed by Student Right to Know (SRK) formula for 4-year programs is 65.9%

\*Student(s) removed from cohort



### Trends in 1-Year Retention and 6-year Graduation Rates of First-year Full-time Freshmen Fall 2000 to Fall 2011 Cohorts



## Athletics and Recreation

Marywood sponsors highly competitive intercollegiate teams in seventeen varsity sports. Marywood is a member of the National Collegiate Athletic Association (NCAA) Division III, the Colonial States Athletic Conference (CSAC), the Eastern College Athletic Conference (ECAC), and Landmark Conference. Marywood currently offers nine sports for females and eight for males:

<b>Female</b>	<b>Male</b>
Basketball	Basketball
Cross Country	Cross Country
Field Hockey	Golf
Lacrosse	Lacrosse
Soccer	Soccer
Softball	Baseball
Swimming/Diving	Swimming/Diving
Tennis	Tennis
Volleyball	

A diverse selection of coed intramural and club sports is available. Sponsored club sports have included climbing, dance team, cheerleading and soccer to name a few. Intramural sports offer a wide range of physical activities. Traditional programs such as basketball, volleyball, flag football, tennis and softball are offered in addition to innovative programs such as ultimate Frisbee and kickboard water polo. Recreation programs include land and water aerobic classes (free for students), special competitive events, and fitness challenges.

The \$14 million dollar Robert J. Mellow Center for Athletics and Wellness opened in the fall of 2006. The Mellow Center offers state-of-the-art fitness, recreation, and athletic opportunities and includes a premier fitness center, a climbing wall, an elevated running track, a dance/aerobic studio, an arena to showcase Pacer sports, and high tech athletic training areas. A new Aquatics Center adjacent to the Mellow Center opened in the spring of 2011 semester and features eight lanes, one meter and three meter diving boards, spectator seating and team rooms. This represents the final phase of a \$25 million dollar expansion to Marywood's athletic and recreation facilities. Additional outdoor facilities include a new multipurpose turf field, tennis courts, sand volleyball court, basketball courts, and three grass fields.

- Student Athlete Academic Honor Roll Participation:
 

Fall 2011	74
Spring 2012	65
- Intramural Participation:
 

Fall 2011	233
Spring 2012	256
- Athletic Honors/Achievements (2004-2012):
  - ECAC South Region Championship – 1
  - CSAC Overall President's Cup – 1
  - CSAC Men's President's Cup – 1
  - CSAC Women's Presidents Cup - 2
  - Team Conference Championships: 30
  - Team Conference Runners-up – 27
  - Conference Coach of the Year – 39
  - All Conference Team Members
 

First Team – 291	Honorable Mention – 142
Second Team – 252	All Sportsmanship Team – 114
  - Women's Soccer Conference Player of the Year – 2002, 2008, 2009, 2012
  - Men's Soccer Rookie of the Year – 2012-2012
  - Women's Cross Country Conference Individual Champion – 2004, 2006, 2010, 2012
  - Men's Tennis Conference Player of the Year – 2008, 2012
  - Women's Lacrosse Player of the Year – 2012
  - Women's Tennis Rookie of the Year – 2011-2012
  - Men's Soccer Player of the Year – 2011-2012

## II. PERSONNEL

### Employees by Ethnicity, EEO Category and Time Status

EEO-6 CATEGORY		08-09	09-10	10-11	11-12	12-13
<u>Executive/Administrative/Managerial</u>						
Full-Time	White	42	41	46	44	46
	Other	2	2	0	3	2
Part-Time	White	2	1	0	0	0
<u>Faculty (instructional only)</u>						
Full-Time	White	127	133.25	137.25	132	142
	Other	10	12	14	21	15
Part-Time	White	181	222	237	231	265
	Other	9	18	11	57	20
<u>Professional (includes librarians)</u>						
Full-Time	White	104	115	114.5	108	122
	Other	5	5	8	9	5
Part-Time	White	28	28	36	27	28
	Other	1	0	2	3	6
<u>Secretarial/Clerical</u>						
Full-Time	White	103	97	97	103	98
	Other	3	3	2	1	1
Part-Time	White	24	24	26	18	19
	Other	5	4	3	5	2
<u>Technical/Paraprofessional</u>						
Full-Time	White	24	21	18	20	22
	Other	0	1	1	1	0
Part-Time	White	7	5	5	5	2
	Other	3	0	0	0	0
<u>Skilled Craft</u>						
Full-Time	White	21	22	20	22	21
<u>Service/Maintenance</u>						
Full-Time	White	84	82	79	81	85
	Other	0	0	1	4	1
Part-Time	White	13	12	16	8	10
	Other	0	1	1	2	1
<b>Total</b>						
Full-Time	White	505	511.25	511.75	510	536
	Other	20	23	26	39	24
Part-Time	White	255	292	320	289	324
	Other	18	23	17	67	29

### Full-time Employees by Gender and Ethnicity

EEO-6 CATEGORY	08-09		09-10		10-11		11-12		12-13	
	M	F	M	F	M	F	M	F	M	F
<u>Executive/Administrative/Managerial</u>										
White	20	22	21	20	22	24	20	24	21	25
Black	0	0	0	0	0	0	0	1	0	1
Amer Ind/Alaskan Native	0	1	0	1	0	0	0	0	0	0
Other	1	0	1	0	0	0	1	1	1	0
<u>Faculty (instructional only)</u>										
White	48	68	57.5	75.75	57	80.25	63	69	61	81
Black	2	0	2	1	2	1	1	1	1	1
Hispanic	1	1	2	1	1	2	1	2	1	2
Asian/Pacific Islander	4	2	4	2	5	3	6	3	5	4
Other	0	0	0	0	0	0	2	5	1	0
<u>Professional (includes librarians)</u>										
White	20	84	25	90	31	83.5	31	77	37	85
Black	0	1	0	1	1	1	0	1	0	1
Hispanic	0	0	0	0	0	1	0	1	0	1
Asian/Pacific Islander	1	3	1	3	1	4	1	2	1	2
Other	0	0	0	0	0	0	2	2	0	0
<u>Secretarial/Clerical</u>										
White	5	99	5	92	4	93	3	100	3	95
Black	0	2	0	2	0	2	0	0	0	0
Hispanic	0	0	0	1	0	0	0	0	0	0
Other	0	0	0	0	0	0	0	1	0	1
<u>Technical/Paraprofessional</u>										
White	12	11	11	10	10	8	12	8	14	8
Hispanic	0	0	0	1	0	1	0	1	0	0
<u>Skilled Craft</u>										
White	21	0	22	0	20	0	22	0	21	0
<u>Service/Maintenance</u>										
White	44	40	43	39	38	41	39	42	40	45
Black	0	0	0	0	1	0	0	1	0	1
Other	0	0	0	0	0	0	2	1	0	0
<b>Total</b>										
White	170	324	184.5	326.75	182	329.75	190	320	197	339
Black	2	3	2	4	4	4	1	4	1	4
Hispanic	1	1	2	3	1	4	1	4	1	3
Asian/Pacific Islander	5	5	5	5	6	7	7	5	6	6
Amer Ind/Alaskan Native	0	1	0	1	0	0	0	0	0	0
Other	1	0	1	0	0	0	7	10	2	1
	175	334	194.5	339.75	193	344.75	206	343	207	353

### Number of Full-time and Pro-rata Faculty by College

	2008	2009	2010	2011	2012
<b>Reap College of Education and Human Development</b>					
Full-time	24	29	29	32	32
Pro-rata	2	2	2	1	1
FTE	25	30	30	32.75	32.75
<b>Insalaco College of Creative and Performing Arts</b>					
Full-time	33	24	25	26	28
Pro-rata	14	8	5	6	5
FTE	40	28	27.5	29	30.5
<b>College of Health and Human Services</b>					
Full-time	34	33	37	40	39
Pro-rata	4	4	5	8	7
FTE	36	35	39.5	44	42.5
<b>College of Liberal Arts and Sciences</b>					
Full-time	33	45	46	49	50
Pro-rata	4	6	6	4	4
FTE	35	48	49	51	52
<b>School of Architecture</b>					
Full-time		3	5	6	8
Pro-rata		0	0	0	1
FTE		3	5	6	8.5
<b>Librarians</b>					
Full-time	8	8	7	5	8
Pro-rata	0	0	1	0	0
FTE	8	8	7.5	5	8
<b>TOTAL</b>					
<b>Full-time</b>	<b>132</b>	<b>142</b>	<b>149</b>	<b>158</b>	<b>165</b>
<b>Pro-rata</b>	<b>24</b>	<b>20</b>	<b>19</b>	<b>19</b>	<b>18</b>
<b>FTE</b>	<b>144</b>	<b>152</b>	<b>158.5</b>	<b>167.75</b>	<b>174.25</b>

### Tenure Status Among Full-time Faculty

	2008		2009		2010		2011		2012	
	N	%	N	%	N	%	N	%	N	%
Professor	25	100.0	25	100.0	22	100.0	23	100.0	23	100.0
Assoc Professor	29	76.3	31	73.8	28	68.3	34	75.6	35	72.9
Asst Professor	8	14.3	5	15.6	6	9.1	5	6.8	4	4.9
Instructor	0	0.0	0	0.0	0	0.0	0	0.0	0	0.0
<b>Total University</b>	<b>62</b>	<b>50.0</b>	<b>61</b>	<b>43.7</b>	<b>56</b>	<b>37.3</b>	<b>62</b>	<b>40.0</b>	<b>62</b>	<b>37.6</b>

**Number of Full-time Faculty by Rank and Gender**

	<u>2008</u>	<u>2009</u>	<u>2010</u>	<u>2011</u>	<u>2012</u>
Professor					
Male	14	14	12	13	11
Female	11	11	10	10	12
<b>Total</b>	<b>25</b>	<b>25</b>	<b>22</b>	<b>23</b>	<b>23 (13.94%)</b>
Associate Prof.					
Male	12	16	17	19	22
Female	26	26	23	26	26
<b>Total</b>	<b>38</b>	<b>42</b>	<b>40</b>	<b>45</b>	<b>48 (29.09%)</b>
Assistant Prof.					
Male	30	31	34	42	38
Female	26	28	31	35	43
<b>Total</b>	<b>56</b>	<b>59</b>	<b>65</b>	<b>77</b>	<b>81 (49.09%)</b>
Instructor					
Male	1	2	2	0	0
Female	12	10	12	2	3
<b>Total</b>	<b>13</b>	<b>12</b>	<b>14</b>	<b>2</b>	<b>3 (1.82%)</b>
Clinical Instructor					
Male		0	0	0	0
Female		4	8	11	10
<b>Total</b>		<b>4</b>	<b>8</b>	<b>11</b>	<b>10 (6.06%)</b>
<b>Total Full-time</b>	<b>132</b>	<b>142</b>	<b>149</b>	<b>158</b>	<b>165</b>

**Number of Full-time Faculty with Terminal Degrees**

	2008		2009		2010		2011		2012	
	<u>N</u>	<u>%</u>	<u>N</u>	<u>%</u>	<u>N</u>	<u>%</u>	<u>N</u>	<u>%</u>	<u>N</u>	<u>%</u>
Doctorate	91	68.9	99	69.7	100	67.1	121	76.6	119	72.1
MSLS/MLIS	7	5.3	8	5.6	7	4.7	5	3.2	8	4.9
MFA/MPhys Asst/ MArch	12	9.1	12	8.5	15	10.1	17	10.8	21	12.7
JD/MD	0	0.0	2	1.4	1	0.7	0	0.0	0	0.0
<b>Total University</b>	<b>110</b>	<b>83.3</b>	<b>121</b>	<b>85.2</b>	<b>123</b>	<b>82.6</b>	<b>143</b>	<b>90.5</b>	<b>148</b>	<b>89.7</b>

### III. FINANCES

#### Unrestricted Operating Revenues

	FY 09-10	FY 10-11	FY 11-12
Tuition and fees:			
Tuition:			
Undergraduate School - On Campus	\$52,402,219	\$55,012,880	\$57,630,432
Undergraduate - OCDP	93,678	62,400	34,009
Graduate School of Arts & Sciences	10,743,447	10,587,656	11,100,886
Graduate School of Social Work	4,607,054	4,701,231	4,533,660
Total Tuition	67,846,398	70,364,167	73,298,987
Less Scholarship Allowances	-27,011,038	-29,266,163	-30,911,661
Net Tuition	\$40,835,360	\$41,098,004	\$42,387,326
Fees:			
Registration and Application	88,705	88,035	85,870
General	2,316,560	2,540,112	2,521,163
Music Lessons	167,383	158,462	147,169
Student Teaching	3,300	2,460	11,550
Graduation	186,750	195,075	212,000
Orientation	145,027	156,133	148,651
Student Activities Fees	454,206	457,801	457,991
Non-credit Offerings	325,148	393,590	470,976
Miscellaneous	849,072	937,957	1,258,852
Total Fees	\$4,536,151	\$4,934,625	\$5,314,222
Total Tuition and Fees (Net)	\$45,371,511	\$46,938,129	\$47,701,548
Federal Grants and Contracts	\$1,256,494	\$1,029,385	\$864,905
State Grants and Contracts	1,078,208	2,411,037	795,567
Private Gifts and Grants	859,611	830,894	1,225,586
Income on Long-Term Investments	6,240	526,202	5,274
Other Investment Income	439,472	167,184	158,012
Net Unrealized and Realized Gains on Long-Term Investments	191,408	-1,108,523	574,003
Sales and Services of Educational Activities	299,736	314,726	322,140
Contributed Services, Net	0	0	0
Other Sources	693,870	551,442	868,569
	\$4,825,039	\$4,722,347	\$4,814,056
Sales and Services of Auxiliary Enterprises:			
Food Service	\$4,689,553	\$5,322,364	\$5,852,886
Resident Halls	6,690,732	7,435,199	7,957,875
Bookstore	1,324,237	1,168,490	209,977
Fricchione Day Care Center	524,910	565,014	542,750
Total Sales and Services of Auxiliary Enterprises	\$13,229,432	\$14,491,067	\$14,563,488
Total Net Assets Released From Restrictions	2,862,225	2,824,083	3,134,955
Total Current Revenues	\$66,288,207	\$68,070,124	\$70,214,047

### Percent Distribution of Unrestricted Operating Revenues

	FY 09-10 % of Total	FY 10-11 % of Total	FY 11-12 % of Total
Tuition and fees:			
Tuition:			
Undergraduate School - On Campus	79.1	80.8	82.1
Undergraduate - OCDP	0.1	0.1	0.0
Graduate School of Arts & Sciences	16.2	15.6	15.8
Graduate School of Social Work	7.0	6.9	6.5
Total Tuition	102.4	103.4	104.4
Less Scholarship Allowances	-40.7	-43.0	(44.0)
Net Tuition	61.6	60.4	60.4
Fees:			
Registration and application	0.1	0.1	0.1
General	3.5	3.7	3.6
Music lessons	0.3	0.2	0.2
Student teaching	0.0	0.0	0.0
Graduation	0.3	0.3	0.3
Orientation	0.2	0.2	0.2
Student Activities Fees	0.7	0.7	0.7
Non-credit offerings	0.5	0.6	0.7
Miscellaneous	1.3	1.4	1.8
Total Fees	6.8	7.2	7.6
Total Tuition and Fees (Net)	68.4	67.6	67.9
Federal Grants and Contracts	1.9	1.5	1.2
State Grants and Contracts	1.6	3.5	1.1
Private Gifts and Grants	1.3	1.2	1.7
Income on Long-Term Investments	0.0	0.8	0.0
Other Investment Income	0.7	0.2	0.2
Net Unrealized and Realized Gains on Long-Term Investments	0.3	-1.6	0.8
Sales and Services of Educational Activities	0.5	0.4	0.5
Contributed Services, Net	0.0	0.0	0.0
Other Sources	1.0	0.8	1.2
	7.3	6.8	6.9
Sales and Services of Auxiliary Enterprises:			
Food service	7.1	7.8	8.3
Resident halls	10.1	10.9	11.3
Bookstore	2.0	1.7	0.3
Fricchione Day Care Center	0.8	0.8	0.8
Total Sales and Services of Auxiliary Enterprises	20.0	21.3	20.7
Total Net Assets Released From Restrictions	4.3	4.1	4.5
Total Current Revenues	100.0	100.0	100.0



### Unrestricted Operating Expenditures

	FY 09-10	FY 10-11	FY 11-12
Educational and General:			
Instruction	\$22,764,241	\$24,117,752	\$27,108,806
Research	347,841	264,944	335,075
Academic Support	7,615,282	7,393,454	6,609,601
Student Services	9,668,228	9,951,461	10,142,741
Institutional Support	12,044,173	12,693,535	13,611,540
Student Aid	325,467	389,081	471,228
Educational and General Expenditures	\$52,765,232	\$54,810,227	\$58,278,991
Auxiliary Enterprises	10,167,061	11,089,059	10,438,214
Total Expenditures	\$62,932,293	\$65,899,286	\$68,717,205

### Percent Distribution of Unrestricted Operating Expenditures

	FY 09-10 % of Total	FY 10-11 % of Total	FY 11-12 % of Total
Educational and General:			
Instruction	36.2	36.6	39.4
Research	0.6	0.4	0.5
Academic Support	12.1	11.2	9.6
Student Services	15.4	15.1	14.8
Institutional Support	19.1	19.6	19.8
Student Aid	0.5	0.6	0.7
Educational and General Expenditures	83.8	83.2	84.8
Auxiliary Enterprises	16.2	16.8	15.2
Total Expenditures	100.0	100.0	100.0

**Externally Sponsored Research  
as a Percentage of  
Unrestricted Operating Expenditures**

	<u>FY 09-10</u>	<u>FY 10-11</u>	<u>FY 11-12</u>
Total Unrestricted Operating Expenditures	\$62,932,293	\$65,899,286	\$68,717,205
Externally Sponsored Research Expenditures	347,841	264,944	\$471,228
Research Support as Percent of Total	0.55%	0.40%	0.69%

**Endowment, Quasi-Endowment and Other Long-Term Investments**

	<u>2009-10</u>	<u>2010-11</u>	<u>2011-12</u>
Endowment and Similar Funds:			
Quasi-Endowment, income designated for Graduate School of Arts and Sciences	\$465,451	\$465,451	\$465,451
Quasi-Endowment, income designated for scholarship aid	493,162	501,312	514,097
Quasi-Endowment, income not designated	17,894,898	19,731,095	23,282,240
Total Quasi-Endowment	<u>\$18,853,511</u>	<u>\$20,697,858</u>	<u>\$24,261,788</u>
Life Income Trust	28,490	28,863	18,779
Endowment	<u>16,269,869</u>	<u>17,364,785</u>	<u>18,423,008</u>
Total Endowment and Similar Funds	\$35,151,870	\$38,091,506	\$42,703,575
Other Long-Term Investments:			
Beneficial Interest in Perpetual Trusts	878,259	1,001,524	952,698
For matching funds under Federal Student Loan Program	267,409	243,862	338,405
Other	<u>727,724</u>	<u>859,953</u>	<u>534,227</u>
Total Other Long-Term Investments	<u>\$1,873,392</u>	<u>\$2,105,339</u>	<u>\$1,825,330</u>
Total Long-Term Investments	<u>\$37,025,262</u>	<u>\$40,196,845</u>	<u>\$44,528,905</u>

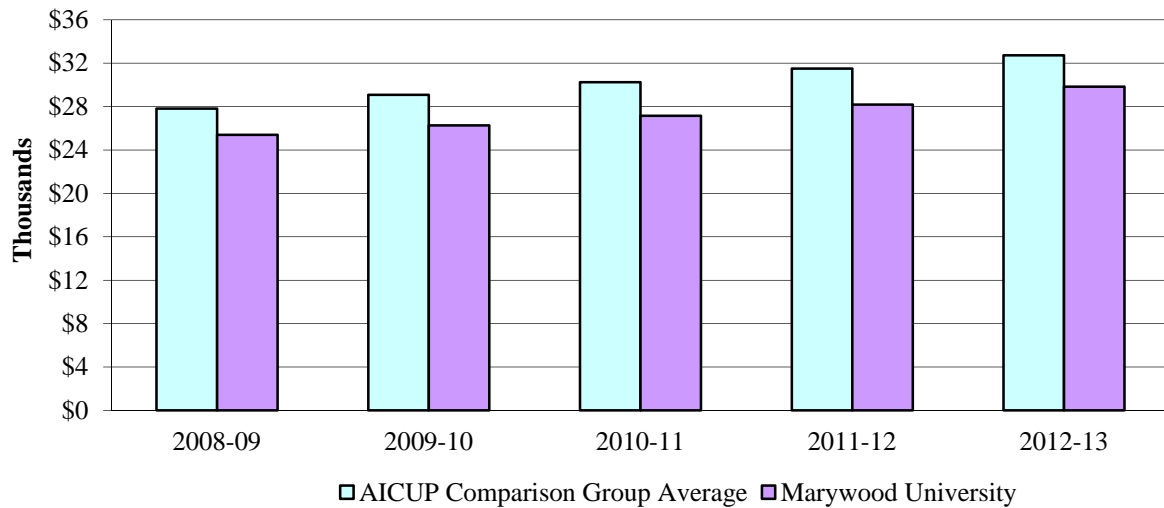
## Tuition, Fees, Room and Board Charges

	<u>FY 08-09</u>	<u>FY 09-10</u>	<u>FY 10-11</u>	<u>FY 11-12</u>	<u>FY 12-13</u>
<b><u>Tuition Rates Per Credit</u></b>					
<i>Undergraduate</i>	\$550	\$575	\$590	\$600	\$630
<i>Distance Learning</i>	450	460	470	478	500
<i>Masters Level</i>	695	715	735	750	775
<i>Master of Fine Arts</i>	695	715	735	750	775
<i>Master of Social Work</i>	695	715	735	750	775
<i>Master of Public Administration</i>	695	715	735	750	775
<i>Master of Social Work (off-campus)</i>	695	715	735	750	775
<i>Master of Social Work (Bloomsburg Program)</i>	560	575	590	600	630
<i>Doctoral Level</i>	785	810	830	840	870
<i>Ph.D. (Hershey)</i>	815	840	860	870	870
<b><u>General Fee Per Year</u></b>					
<i>Full-Time</i>	\$890	\$920	\$950	\$975	\$1,050
<i>Part-Time</i>	340	370	400	425	500
<b><u>Student Activities Fee Per Year</u></b>					
<i>UG - Full-Time</i>	\$200	\$200	\$200	\$200	\$250
<i>UG - Part-Time</i>	100	100	100	100	150
<i>GR – Full- &amp; Part-Time</i>	40	40	40	40	40
<b><u>Registration Fee Per Year</u></b>					
	\$100	\$100	\$100	\$100	\$100
<b><u>Room &amp; Meals Per Year</u></b>					
<i>Double Room and 24 Meals/Week-\$100 PP</i>	\$11,330	\$11,728	\$12,172	\$12,520	\$12,920
<i>Double Room and 19 Meals/Week-\$200 PP</i>	11,108	11,498	12,172	12,520	12,920
<i>Double Room and 15 Meals/Week-\$300 PP</i>	11,108	11,498	12,172	12,520	12,920
<i>Double Room and 185 Block Plan-\$100 PP</i>	11,108	11,498	11,934	12,270	12,650
<i>Double Room and 150 Block Plan-\$100 PP</i>	10,458	10,826	11,238	11,550	11,670
<i>Single Room Fee (additional charge)</i>	1,255	1,414	1,552	1,584	1,630
<b><u>Other Major Fees</u></b>					
<i>New Student Matriculation Fee</i>	\$200	\$225	\$225	\$225	\$225
<i>Graduation Fee</i>	225	225	225	225	225
<i>Music Lessons (per half hour per credit charge in addition to tuition)</i>	395	395	395	395	395
<b><u>Undergraduate Cost of Attendance</u></b>					
<i>Tuition for Full-Time Students</i>	\$24,300	\$25,150	\$26,000	\$27,000	\$28,080
<i>Room &amp; Meals (19 meals)</i>	11,108	11,498	12,172	12,520	12,920
<i>General Fee</i>	890	920	950	975	1,050
<i>Student Activities Fee</i>	200	200	200	200	250
<b>Total Cost Per Year</b>	<b>\$36,498</b>	<b>\$37,768</b>	<b>\$39,322</b>	<b>\$40,695</b>	<b>\$42,300</b>

**Total Cost for Tuition & Required Fees and Room and Board  
Marywood University and AICUP Peer Institutions**

	2010-11 \$	2011-12 \$	2012-13 \$	most recent increase %
<u>Tuition and Fees</u>				
<b>Marywood University</b>	<b>27,150</b>	<b>28,175</b>	<b>29,830</b>	<b>4.3</b>
Arcadia University	32,720	34,150	35,620	4.3
Gannon University	24,582	25,522	26,526	3.9
Immaculata University	27,870	28,850	29,000	0.5
King's College	26,644	27,680	29,174	5.4
La Roche College	22,476	23,160	24,058	3.9
La Salle University	33,700	35,140	36,550	4.0
Misericordia University	24,990	25,990	27,230	4.8
St. Francis University	26,534	27,808	28,878	3.8
St. Joseph's University	35,230	36,640	37,830	3.2
Susquehanna University	34,070	35,860	37,280	4.0
University of Scranton	34,536	36,042	37,456	3.9
Villanova University	39,930	41,110	42,740	4.0
Widener University	33,270	34,762	36,382	4.7
Wilkes University	27,178	28,210	29,326	4.0
<u>Room &amp; Board</u>				
<b>Marywood University</b>	<b>12,172</b>	<b>12,520</b>	<b>12,920</b>	<b>3.2</b>
Arcadia University	11,150	11,640	12,150	4.4
Gannon University	9,720	10,230	10,580	3.4
Immaculata University	11,460	11,460	11,740	2.4
King's College	10,068	10,470	11,020	5.3
La Roche College	8,916	9,182	9,732	6.0
La Salle University	11,540	12,010	12,510	4.2
Misericordia University	10,410	10,760	11,190	4.0
St. Francis University	9,066	9,520	9,900	4.0
St. Joseph's University	11,925	12,206	12,800	4.9
Susquehanna University	9,230	9,600	10,000	4.2
University of Scranton	11,862	12,432	12,804	3.0
Villanova University	10,640	10,960	11,393	4.0
Widener University	11,720	11,896	12,248	3.0
Wilkes University	11,470	11,698	12,034	2.9

### Tuition and Fees: AICUP Comparison Group Average v. Marywood University



### Student Financial Aid

<b>Funding Source</b>	<b>FY 07-08</b>	<b>FY 08-09</b>	<b>FY 09-10</b>	<b>FY 10-11</b>	<b>FY 11-12</b>
<b>Institutional Aid</b>					
Marywood University	\$20,937,917	\$23,631,961	\$26,318,023	\$28,811,004	\$30,758,668
Endowments	44,183	47,730	50,380	38,650	35,250
<b>Institutional Aid</b>	<b>\$20,982,100</b>	<b>\$23,679,691</b>	<b>\$26,368,403</b>	<b>\$28,849,654</b>	<b>\$30,793,918</b>
<b>Federal, State, and Private Aid</b>					
Federal	2,433,434	2,654,429	3,736,795	3,990,402	3,725,685
State	2,965,606	2,534,390	2,525,943	2,511,828	2,922,519
Private	196,412	192,645	129,137	74,280	84,275
<b>Federal, State and Private Aid</b>	<b>\$5,595,452</b>	<b>\$5,381,464</b>	<b>\$6,391,875</b>	<b>\$6,576,510</b>	<b>\$6,732,479</b>
<b>Grand Total</b>	<b>\$26,577,552</b>	<b>\$29,061,155</b>	<b>\$32,760,278</b>	<b>\$35,426,164</b>	<b>\$37,526,397</b>

For comparability, Pell and PHEAA grants (listed below) are included in the above federal and state sources, respectively. These amounts are excluded from the audited financial statements.

Pell Grants	\$1,809,117	\$1,959,345	\$2,995,400	\$3,290,094	\$3,230,090
PHEAA Grants	\$2,806,108	\$2,428,375	\$2,806,468	\$2,480,826	\$2,913,418

### Total Gifts and Grants (Fiscal Gifts)

Source	FY '08 Amount	FY '09 Amount	FY '10 Amount	FY '11 Amount	FY '12 Amount	Five Year Amount
Alumni	\$1,723,107	\$890,149	\$587,763	\$625,042	\$955,392	\$4,781,453
Foundations/Corporations	1,760,720	1,902,118	1,865,504	2,295,853	2,231,379	10,055,574
Friends	1,538,072	922,478	1,181,142	1,293,190	438,203	5,373,085
Parents	95,539	43,616	37,659	38,310	38,863	253,987
Sub-total	\$5,117,437	\$3,758,362	\$3,672,068	\$4,252,395	\$3,663,837	\$20,464,099
Sisters, Servants of the Immaculate Heart of Mary						
I.H.M. Scholarship Gift	\$255,000	\$250,000	\$225,000	\$200,000	\$183,933	\$1,113,933
Competitive Government Grants and Contracts	3,068,439	1,583,218	648,319	398,163	1,650,378	7,348,517
Sub-total	\$3,323,439	\$1,833,218	\$873,319	\$598,163	\$1,834,311	\$8,462,450
<b>Grand Total</b>	<b>\$8,440,875</b>	<b>\$5,591,580</b>	<b>\$4,545,387</b>	<b>\$4,850,558</b>	<b>\$5,498,148</b>	<b>\$28,926,548</b>

### Alumni Giving Fiscal Years 2008 – 2012

Fiscal Year	Number of Donors	% Participation	Total Giving	Average Gift
2008	3,967	16.7	1,723,107	434.36
2009	4,134	16.2	890,149	215.32
2010	3,913	15.1	587,763	150.21
2011	3,385	12.7	625,042	184.65
2012	3,136	11.8	955,392	304.65

### Office of Research and Sponsored Programs

Academic Affairs Research and Program Grants and Contracts (Public and Private Funds)

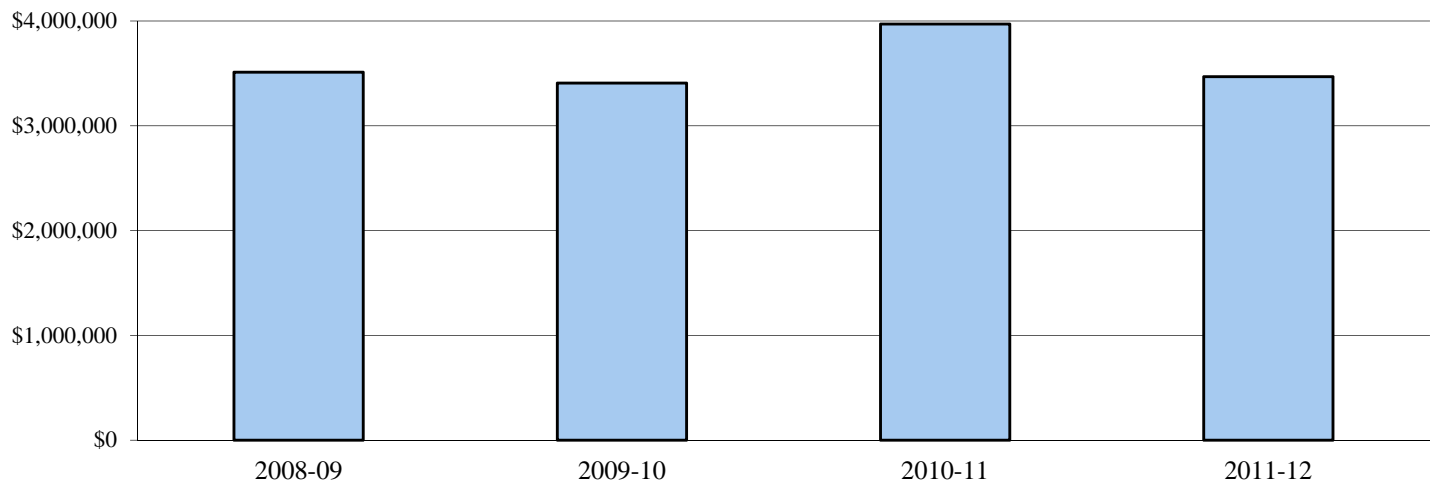
FY 2006-07	\$1,191,032	FY 2009-10	\$1,333,016
FY 2007-08	\$1,920,238	FY 2010-11	\$1,457,680
FY 2008-09	\$2,218,130	FY 2011-12	\$1,596,452

## Gift\* Levels by Campaign Year Giving by Gift Size

Current Operations	2008-09		2009-10		2010-11		2011-12	
	N	\$	N	\$	N	\$	N	\$
\$5,000	29	1,574,469	38	1,537,443	26	1,662,688	29	1,364,994
\$2,500-4,999	31	88,078	34	89,853	39	128,865	32	104,365
\$1,000-2,499	104	133,281	124	141,967	105	145,123	119	174,760
\$250-999	352	103,234	377	143,191	367	144,434	298	115,035
\$100-249	1,137	134,433	1015	120,969	1,008	126,192	836	102,296
\$1-99	2,588	79,651	2,371	81,190	2,351	81,629	2,163	73,144
<b>Totals</b>	<b>4,241</b>	<b>2,113,146</b>	<b>3,959</b>	<b>2,114,613</b>	<b>3,896</b>	<b>2,288,931</b>	<b>3,477</b>	<b>1,934,944</b>
<b>Capital and Endowment</b>								
\$5,000	44	1,715,106	48	1,595,727	48	2,029,434	41	1,758,076
\$2,500-4,999	11	36,280	21	54,754	15	40,081	16	56,046
\$1,000-2,499	59	77,619	68	85,529	38	51,446	42	62,021
\$250-999	80	40,471	71	26,901	51	24,035	50	19,842
\$100-249	150	18,645	136	16,790	109	14,033	106	13,494
\$1-99	182	7,007	79	2,755	109	4,436	78	3,347
<b>Totals</b>	<b>526</b>	<b>1,895,218</b>	<b>423</b>	<b>1,782,456</b>	<b>370</b>	<b>2,163,465</b>	<b>333</b>	<b>1,912,826</b>
<b>Total Giving by Year</b>								
<b>Current Operations &amp; Capital and Endowment</b>	<b>4,767</b>	<b>4,008,364</b>	<b>4,382</b>	<b>3,897,069</b>	<b>4,266</b>	<b>4,452,396</b>	<b>3,810</b>	<b>3,847,770</b>
<b>Presidential Society</b>	<b>212</b>	<b>3,511,931</b>	<b>230</b>	<b>3,408,491</b>	<b>220</b>	<b>3,971,372</b>	<b>226</b>	<b>3,469,720</b>

\* Does not include Competitive Government Grants and Contracts

### Total Presidential Society Giving



## IV. FACILITIES

### Land and Building Inventory

#### Land (In Acres):

	<u>June 30, 2008</u>	<u>June 30, 2009</u>	<u>June 30, 2010</u>	<u>June 30, 2011</u>	<u>June 30, 2012</u>
Land in Scranton, PA	70.0	70.0	70.3	71.3	71.3
Land in Dunmore, PA	43.4	43.4	43.4	51.4	51.4
<b>Total</b>	<b>113.4</b>	<b>113.4</b>	<b>113.7</b>	<b>122.7</b>	<b>122.7</b>

#### Buildings:

<u>Building</u>	<u>Predominant Function</u>	<u>Usable Square Footage</u>
Aquatic Center	Academic/Athletics/Recreation	16,372
Adams Avenue Property (#2205)	President's Residence	3,190
Adams Avenue Property (#2305)	Administrative	2,924
Adams Avenue Property (#2349)	Student Life Residence	2,857
Bethany Hall and Garage	Student Residence	4,970
Center for Architectural Studies	Academic	25,698
Center For Natural and Health Sciences	Academic	45,535
Chemical Room	Chemical Storage	320
Domiano Early Childhood Center	Special	2,810
Emmanuel Hall	Student Residence	8,359
Fricchione Day Care Center	Special	8,397
Immaculata Hall	Administration/Student Residence	31,994
Insalaco Center for Studio Arts	Academic	56,020
Keith J. O'Neill Center for Healthy Families	Academic/Special	24,828
Learning Resources Center	Library	66,182
Liberal Arts Center	Academic/Administrative	70,263
Loughran Hall	Student Residence/Administrative	109,247
Madonna Hall	Student Residence	51,674
Maria Hall	Administrative	5,020
McCarty Hall	Student Residence	4,921
McGowan Center for Graduate and Professional Studies	Academic	55,252
North Washington Avenue Property (#2501)	Residence	2,224
Perpetual Help Hall	Student Residence	3,574
Power Plant and Maintenance Building	Support	19,924
Printing and Mailing Center	Support	3,674
Regina Hall	Student Residence/Administrative	56,907
Richmont Street Property (#1210)	Student Residence/Administrative	4,269
Robert J. Mellow Center	Academic/Athletics/Recreation	62,727
Sette La Verghetta Center for Performing Arts	Academic	39,769
Shields Visual Arts Center	Academic	56,707
South Campus	Academic/Administrative	199,250
Student Center (Nazareth Hall)	Campus Life	55,592
Washington Avenue Property (#2400)	IHM Residence	3,183
Woodland Residences I	Student Residences	10,442
Woodland Residences II	Student Residences	26,190
Woodland Residences III	Student Residences	14,617
<b>Total Square Footage</b>		<b>1,301,968</b>
<b>Net Book Value of Buildings (historical cost less accumulated depreciation)</b>		<b>\$126,133,739</b>
<b>Cost of Replacement</b>		<b>\$239,186,670</b>

#### Leased facilities:

DeSales University - School of Social Work



## University Library

	<u>2009-10</u>	<u>2010-11</u>	<u>2011-12</u>
<b><u>Resources</u></b>			
<b><i>Print Collection</i></b>			
Books and Bound Periodicals	220,530	222,033	204,708
Books Added	2,367	2,261	1,870
Print Journal Titles	404	411	77
Distinct Journal Titles (Electronic and Print)	28,091	29,756	34,057
Microfiche	364,677	364,677	364,677
Reels of Microfilm	13,497	13,567	13,582
<b><i>Media Collection</i></b>			
Art Prints	337	337	337
Audiotapes	7,520	2,791	0
Compact Discs	7,191	7,434	7,476
Computer Software	21	16	16
DVDs	3,911	4,174	4,262
Records	5,227	5,271	5,216
Slides	22,584	10,268	10,268
Sound Slidesets	27	14	14
Study Prints	418	418	418
Videorecordings	6,614	6,571	6,572
<b><i>Electronic Resources</i></b>			
Internet Databases	53	52	52
Full-Text Databases	51	51	48
<b><u>Expenditures</u></b>			
Books and Periodicals	\$209,862	\$204,151	219,591
Electronic Resources	110,253	134,984	103,334
Bindings	6,636	6,452	5,437
Non-Print Media	20,022	15,434	4,970
Supplies	8,560	7,923	9,937
<b><i>Interlibrary Loan</i></b>			
Borrowed	4,302	3,108	3,856
Loaned	4,852	4,816	4,329
<b><i>Staff</i></b>			
Professionals	9.0	8.5	8.0
Clerical	12.7	12.7	12.7
Student Assistants	25	23	23
<b>Circulation – Total</b>	<b>29,752</b>	<b>21,146</b>	<b>21,452</b>
<b>Hours of Service/Week</b>	<b>86.5</b>	<b>92.5</b>	<b>98.5</b>
<b>Reference Transactions in a Typical Week</b>	<b>157</b>	<b>169</b>	<b>73</b>
<b>Gate Count in a Typical Week</b>	<b>3,668</b>	<b>4,450</b>	<b>4,489</b>
<b>No. of Presentations, Workshops, Etc.</b>	<b>138</b>	<b>181</b>	<b>170</b>
<b>No. of Students, Faculty Attending</b>	<b>2,089</b>	<b>2,320</b>	<b>2,702</b>

## **Office of Information Technology**

The Office of Information Technology (OIT) is responsible for providing technology and related support to the Marywood University campus. This central organization of all IT resources on campus is made up of four divisions: User Support Services, Application Programming Services, Network & Systems Administration Services, and Web Development.

### **User Support Services**

User Support Services provides Help Desk, Academic Computing and Training support. The Help Desk provides first level hardware, software, and network support to faculty, staff and students. A public walk-up window is housed on the main floor of the Library.

Academic computing staff assist faculty in the use of information technology for the creation, organization, analysis, and presentation of scholarly, scientific, and curricular resources. In courses using our learning management system (Moodle), syllabi, course information, chat, assignment, and test capabilities are all available online.

One-on-one and group training is conducted by various User Support staff members on applications such as Microsoft Office, Google Apps, SPSS, Moodle, and other specialized packages such as Colleague and the MarywoodYOU Portal.

User Support also employs lab supervisors and student lab assistants who troubleshoot basic problems and maintain the computer labs located throughout campus.

### **Application Programming Services**

Application Programming Services supports administrators and staff in management and student services, and gives ongoing technical and staff support for effective data and process operations. This includes programming for over 5,000 applications that manage the University's business functions, such as registration, paying tuition and fees, and viewing course requirements on line.

### **Network and System Administration**

Marywood University is committed to providing high quality technology for its students, faculty and staff. The Marywood data infrastructure began in 1987 and continues to grow with added fiber optic backbone, voice, data and video wiring, desktop and laptop computers, and mobile devices. The fiber optic backbone connects all major classroom, administrative buildings, and residence halls. Buildings are wired for voice, data and video with wireless capabilities widespread throughout the campus.

### **Web Development**

The Web Team comprises all of the pieces that make the webpage possible, from policy, to design, to implementation. They are responsible for the organization and maintenance of the website and have an array of skills, such as programming, graphic design, photography, and videography that helps make department pages functional and unique.

## **Computer Labs**

The Office of Information Technology maintains computer labs and drop-in areas in every major building on campus. A 24/7 computing facility is located in our largest dormitory, Loughran Hall. Most labs are Windows-based PCs with Macintosh computers in buildings housing graphic arts or education. All have a high-speed Internet connection and Microsoft Office as well as a number of specialized programs as needed by various departments.

## **Peer-to-Peer Policy Statement**

Marywood University prohibits Peer to Peer (P2P) network traffic from the campus network because of its widespread use in distributing illegal or copyrighted material. The Office of Information Technology reserves the right to remove any computer in question from the network entirely if it is found to be distributing or collecting illegal or copyrighted material, or using excessive amounts of network bandwidth to the detriment of other computers on the network.

### *Definitions*

On the Internet, P2P is a type of transient Internet network that allows a group of computer users with the same networking program to connect with each other and directly access files from one another's hard drives. The files can include music, videos, photos, games and other files.

These P2P programs include, but are not limited to, BitTorrent, Limewire, Gnutella, Vuze, Ares and Ants. Marywood University blocks the use of peer-to-peer applications on all network segments. The use of these applications can expose considerable vulnerabilities. P2P networks have been used to distribute viruses, malware and corrupted or mislabeled files, a threat that can severely impact university operations and online academic research. Malware exposure is a primary staging platform for identity and electronic financial theft.

Marywood University expects that all computers and networks on the campus will be used in a manner consistent with the Conditions of Computer Use Policy and compliant with applicable law. Marywood University is under no obligation to protect a user from a complaint or action arising from violation, or alleged violation, of the law. Users should understand that the fact that material is available for free on the Internet does not mean that accessing such material is authorized by third party rights-holders.

Marywood University prohibits the download and distribution of any copyrighted material, such as music, video, photos and software. Disproportionate bandwidth usage and copyright infringement are violations of the University's Conditions of Computer Use Policy.

**Some Legal Alternatives for Downloading:** AOL Music, ESPN360, Hulu Movies & TV, iTunes Movies, Music & TV, MTV Video, MySpace Music, Netflix Movies & TV, Pandora, VH1 Videos, Xbox Live Marketplace.

## V. ACCREDITATIONS

### Marywood University Accreditations/Approvals

#### Regional

Marywood University is accredited by the **Middle States Commission on Higher Education**,

3524 Market Street, Philadelphia, PA 19104

Phone: 267-284-5000

The Commission on Higher Education is the unit of the Middle States Association of Colleges and Schools that accredits degree-granting colleges and universities in the Middle States region, which includes Delaware, the District of Columbia, Maryland, New Jersey, New York, Pennsylvania, Puerto Rico, the U.S. Virgin Islands, and several locations abroad.

#### Professional

Business and Managerial Science Programs granting the B.B.A. Degrees at the Undergraduate Level and the M.B.A. and M.S. in Management Information System Degrees at the Graduate Level  
**Accreditation Council for Business Schools and Programs**,  
7007 College Boulevard, Suite 420, Overland Park, KS 66211  
Phone: 913-339-9356

The Masters Degree in Physician Assistant Studies  
**Accreditation Review Committee on Education for the Physician Assistant, Inc.**,  
12000 Findley Road, Suite 240, Duluth, GA 30097  
Phone: 770-476-1224

The Graduate Art Therapy Program of the Department of Art  
**American Art Therapy Association, Inc.**,  
5999 Stevenson Ave., Alexandria, VA 22304  
Phone: 888-290-0878 or 1-703-212-2238

The Didactic Program, Coordinated Program, and Internship and Distance Internship Programs in the Nutrition and Dietetics Department  
**Commission on Accreditation for Dietetics Education, American Dietetic Association**,  
120 South Riverside Plaza, Suite 2000, Chicago, IL 60606  
Phone: 312-899-4817 ext. 5400

The Masters Program in Speech-Language Pathology  
**Council on Academic Accreditation, American Speech-Language-Hearing Association**,  
10801 Rockville Pike, Rockville, MD 20852  
Phone: 800-498-2071

The Athletic Training Program in the Health and Physical Education Department  
**Commission on Accreditation of Athletic Training Education**,  
2201 Double Creek Drive, Suite 5006, Round Rock, TX 78664  
Phone: 512-733-9700

Counseling Programs in Elementary Counseling, Secondary School Counseling and Mental Health Counseling  
**Council for Accreditation of Counseling and Related Educational Programs**,  
5999 Stevenson Avenue, Alexandria, VA 22304  
Phone: 703-823-9800 ext. 301

The Masters and Baccalaureate of Social Work degree programs in the School of Social Work and Administrative Studies  
**Council on Social Work Education**,  
1725 Duke Street, Suite 500, Alexandria, VA 22314  
Phone: 703-683-8080

Programs in Art and Design of the Department of Art  
**National Association of Schools of Art and Design**,  
11250 Roger Bacon Drive, Suite 21, Reston, VA 20190  
Phone: 703-437-0700

Programs in Music  
**National Association of Schools of Music**,  
11250 Roger Bacon Drive, Suite 21, Reston, VA 20190  
Phone: 703-437-0700

Programs for the preparation of elementary, secondary, K-12 and special education teachers and for the preparation of other school personnel including school psychologists, guidance counselors, principals, superintendents, librarians, reading specialists, speech and language pathologists, home school visitors, and supervisory personnel  
**National Council for Accreditation of Teacher Education**,  
2010 Massachusetts Ave NW, Suite 500,  
Washington, DC 20036  
Phone: 202-466-7496

The Graduate and Undergraduate Department of Nursing  
**National League for Nursing Accrediting Commission**,  
3343 Peachtree Road NE, Suite 850, Atlanta, GA 30326  
Phone: 1-800-669-1656

The Doctor of Psychology (Psy.D.) program in Clinical Psychology is accredited as a doctoral program in clinical psychology by the **American Psychological Association (APA)**, Office of Program Consultation and Accreditation,  
750 First Street, NE, Washington, DC 20002-4242  
Phone: 202-336-5979

## VI. STRATEGIC PLAN GOALS AND OBJECTIVES

### Marywood University

#### STRATEGIC PLAN GOALS AND OBJECTIVES 2010 - 2015

- GOAL 1: Create both academic and physical infrastructure to provide a learning environment that enables students to succeed academically and professionally.**
- Objective A:** *Enhance the quality of the Marywood educational experience.*
  - Objective B:** *Enhance and promote Marywood University's academic reputation.*
  - Objective C:** *Continue to expand research opportunities for faculty and students.*
  - Objective D:** *Improve physical environment for delivering instruction, conducting research, and accommodating alternative learning styles.*
- GOAL 2: Create a culturally diverse and global educational experience to educate students to live responsibly in a diverse and interdependent world.**
- Objective A:** *Increase the number of culturally diverse students, faculty, and staff.*
  - Objective B:** *Enhance curriculum to reflect the current global perspective.*
  - Objective C:** *Develop more sensitive and positive attitudes and behaviors toward cultural diversity by faculty, staff and students including attention to providing a welcoming and supportive campus.*
  - Objective D:** *Increase opportunities for study abroad and other cultural exchange experiences for students and faculty.*
- GOAL 3: Align resources to achieve institutional goals, with a focus on environmental stewardship.**
- Objective A:** *Improve information services and access for students, faculty, staff, and external audiences.*
  - Objective B:** *Improve financial position through revenue enhancement activity.*
  - Objective C:** *Improve the quality and efficiency of infrastructure.*
  - Objective D:** *Align human resource initiatives to institutional goals.*
  - Objective E:** *Create a campus-wide initiative to implement Sustainable Design Practices in all building and campus maintenance and operations, building renovations, and new construction.*