



Marywood

UNIVERSITY



FACT BOOK 2014-2015

Office of Planning and Institutional Effectiveness



Mission Statement

Marywood University, sponsored by the Congregation of the Sisters, Servants of the Immaculate Heart of Mary, roots itself in the Catholic intellectual tradition, the principle of justice, and the belief that education empowers people. The University integrates an enduring liberal arts tradition and professional disciplines to create a comprehensive learning experience. Our undergraduate and graduate programs promote academic excellence, advance innovative scholarship, and foster leadership in service to others. Within a welcoming and supportive community, Marywood challenges individuals of all backgrounds to achieve their full potential and make choices based on spiritual and ethical values. Marywood University prepares students to seek sustainable solutions for the common good and educates global citizens to live responsibly in an interdependent world.

MEMORANDUM

TO: Marywood University Colleagues

FROM: Dr. Kathleen Ruthkosky
Associate VP for Planning and Institutional Effectiveness

RE: *Fact Book 2014-2015*

DATE: January 2015

The Marywood University *Fact Book 2014-2015*, twentieth edition, presents concise tables of data counts and trends on students, personnel, finances and facilities. Input is submitted by many campus departments and units and then assembled and published by the Office of Planning and Institutional Effectiveness. Sincere thanks to our campus colleagues for their assistance.

The *Fact Book* is available for download and printing. For access, sign in to the *MarywoodYou* portal and click on the Documents tab. Find the Document Type: Planning and IE, choose the Section: Factbook and the factbook will be listed. It is also available to the general public. Go to the Marywood University Office of Planning and Institutional Effectiveness web page at <http://www.marywood.edu/instresearch>. Footnotes on selected pages clarify important institutional changes.

We welcome your comments and suggestions for producing a *Fact Book* with the most timely and useful information possible for the entire campus. The contact person in the Office of Planning and Institutional Effectiveness for questions and comments on the *Fact Book 2014-2015* is Ms. Charlotte Woodward, Assistant Director of Institutional Research, who may be reached at woodward@marywood.edu or 570-348-6203.

/ld

TABLE OF CONTENTS

I STUDENTS

A.	Synopsis of Baccalaureate Degree Programs and Majors	1
B.	Synopsis of Graduate Degree Programs	3
C.	Degrees Granted by College and Department.....	5
D.	Admissions Activity	
1.	Undergraduate.....	9
♦	<i>Trends in Undergraduate Admissions Activity</i>	9
2.	Graduate	10
♦	<i>Graduate Admissions Funnel by College</i>	11
E.	Average SAT Scores for First-time Full-time Freshmen	12
♦	<i>Trends in SAT Scores of First-time Full-time Freshmen</i>	12
F.	Fall Headcount and FTE Enrollment by College and Time Status	13
G.	Fall Headcount Enrollment by College and Race/Ethnicity	17
♦	<i>Trends in Total Undergraduate Enrollment</i>	19
♦	<i>Trends in Total Graduate Enrollment</i>	19
H.	Fall Headcount Enrollment by College, Department and Level.....	20
I.	Fall Headcount Enrollment by College and Gender.....	22
J.	Fall Undergraduate Enrollment by On/Off-Campus Living.....	24
K.	Students with Disabilities.....	24
L.	Study Abroad Program - Location and Majors of Students	24
M.	International Student Enrollment	
1.	By Country.....	25
2.	By Major.....	25
N.	Honors Program	
1.	Majors Represented in Honors Program	26
2.	Honors Courses Offered.....	26
3.	Enrollment in Honors Courses	26
O.	Retention and Graduation Rates	
♦	<i>Trends in 6-year Graduation Rates of First-time Full-time Freshmen</i>	27
♦	<i>Trends in Freshman Class 1-Year Retention and 6-year Graduation</i>	28
P.	Athletics and Recreation.....	29

II PERSONNEL

A.	Employees by Ethnicity, EEO Category and Time Status	30
B.	Full-time Employees by Gender and Ethnicity.....	31
C.	Faculty	
1.	Number of Full-time and Pro-rata Faculty by College	32
2.	Tenure Status Among Full-time Faculty.....	32
3.	Number of Full-time Faculty by Rank and Gender	33
4.	Number of Full-time Faculty with Terminal Degrees	33

IV	FINANCES	
	A.	Unrestricted Operating Revenues 34
	B.	Percent Distribution of Unrestricted Operating Revenues 35
	C.	Unrestricted Operating Expenditures..... 36
	D.	Percent Distribution of Unrestricted Operating Expenditures..... 36
	E.	Externally Sponsored Research as a Percentage of Unrestricted Operating Expenditures 37
	F.	Endowment, Quasi-Endowment and Other Long-Term Investments 37
	G.	Tuition, Fees and Room & Board Charges 38
	H.	Total Cost at Marywood and AICUP Peer Institutions..... 39
		♦ <i>Tuition and Fees: AICUP Comparison Group Average v. Marywood</i> 40
	I.	Student Financial Aid 40
	J.	Total Gifts and Grants
		1. Purposes of Support..... 41
	K.	Donor Giving Levels 41
	L.	Sources of Support
		♦ <i>FY14 Sources of Support</i> 41
	M.	Undergraduate Alumni Giving 41
	N.	Office of Research and Sponsored Programs
		1. Program Grants and Contracts 41
V	FACILITIES	
	A.	Land and Building Inventory 42
	B.	University Library 43
	C.	Office of Information Technology..... 44
VI	ACCREDITATIONS 46
VII	STRATEGIC PLAN 2010-2015 GOALS AND OBJECTIVES Inside back cover

I. STUDENTS

Synopsis of Baccalaureate Degree Programs and Majors

(Total 63)

BA Advertising and Public Relations	BA Religious Studies
BA Art Education	BA Sociology
BA Art Therapy	BA Spanish
BA Arts Administration	BA Spanish/Secondary Education
<ul style="list-style-type: none"> • Art • Corporate • Music • Theatre 	BA Theatre
BA Broadcast Journalism	BArch Architecture
BA Communication Arts/Secondary Education	BBA Accounting
<ul style="list-style-type: none"> • Nonprint Media • Theatre 	BBA Aviation Management
BA Comprehensive Social Sciences (General)	<ul style="list-style-type: none"> • Airport/Airline Management • Professional Pilot/Flight Operations
BA Criminal Justice	BBA Business Information Technology
BA Digital Media and Broadcast Production	BBA Financial Planning
<ul style="list-style-type: none"> • Broadcast • Corporate 	BBA Hospitality Management
BA English	BBA International Business
BA English/Secondary Education	BBA Management
BA French	BBA Marketing
BA French/Secondary Education	BBA Retail Business Management
BA Health Services Administration	BEDA Environmental Design - Architecture
<ul style="list-style-type: none"> • General • Gerontology 	BFA Design
BA History	<ul style="list-style-type: none"> • Graphic Design • Interior Architecture/Design • Photography
BA History/Political Science	BFA Studio Art
<ul style="list-style-type: none"> • Pre-law 	<ul style="list-style-type: none"> • Ceramics • Illustration • Painting • Sculpture
BA History-Social Science/ Secondary Education	BM Music Education
BA Musical Theatre	BM Music Performance
BA Philosophy	BM Music Therapy

Synopsis of Baccalaureate Degree Programs and Majors

(Continued)

BS	Athletic Training	BS	Mathematics
BS	Biology	BS	Mathematics/Secondary Education
	<ul style="list-style-type: none"> • Pre-Chiropractic • Pre-Professional 	BS	Medical Laboratory Science
BS	Biology/Secondary Education	BS	Nutrition and Dietetics
BS	Biotechnology		<ul style="list-style-type: none"> • Spanish
BS	Communication Sciences and Disorders	BS	Pre-Physician Assistant Studies
	<ul style="list-style-type: none"> • Deaf Studies • Pre-Professional 	BS	Psychology
BS	Computer Science		<ul style="list-style-type: none"> • Clinical Practices • Industrial/Organizational
BS	Early Childhood Education	BS	Special Education
	<ul style="list-style-type: none"> • Special Education 		<ul style="list-style-type: none"> • English Secondary • English-Science • Mathematics Secondary • Math-English • Math-Science • Math-Social Studies • Social Studies-Science
BS	Elementary Education		
BS	Environmental Science		
BS	Family and Consumer Science Education		
BS	General Science/Secondary Education		
BS	Health and Physical Education	BSN	Nursing
	<ul style="list-style-type: none"> • Education • Physical Activity 		<ul style="list-style-type: none"> • Pre-Service • RN
BS	Health Sciences	BSW	Social Work
BS	Information Security		

Total Undergraduate Major Programs: 63

Synopsis of Graduate Degree Programs

(Total 34 Masters, 1 Educational Specialist, 2 Doctoral)

MA	Art Education	MFA	Visual Arts
MA	Art Therapy		<ul style="list-style-type: none"> • Advertising Design • Clay • Graphic Design • Illustration • Painting • Photography • Printmaking • Sculpture
MA	Communication Arts <ul style="list-style-type: none"> • Interdisciplinary • Media Management • Production 		
MA	Mental Health Counseling (General)		
MA	Music Education		
MA	Psychology <ul style="list-style-type: none"> • Clinical Services • General Theoretical 	MHSA	Health Services Administration
		MMT	Music Therapy
		MPA	Public Administration
MA	Studio Art <ul style="list-style-type: none"> • Advertising Design • Ceramics • Clay • Graphic Design • Illustration • Interior Architecture • Painting • Photography • Printmaking • Sculpture • Weaving 	MS	Biotechnology
		MS	Counselor Education <ul style="list-style-type: none"> • Elementary • K-12 • Secondary
		MS	Criminal Justice
		MS	Early Childhood Intervention
		MS	Financial Information Systems
		MS	Gerontology
		MS	Higher Education Administration
MArch	Architecture	MS	Information Security
MAT	PK-4 Education	MS	Management Information Systems
MAT	Secondary/K-12 Education	MS	Nutrition
MBA	Business Administration <ul style="list-style-type: none"> • General Management • Finance and Investments • Management Information Systems 	MS	Physician Assistant Studies
		MS	Reading Education
		MS	School Leadership
		MS	Special Education
MEd	Instructional Leadership	MS	Special Education Administration and Supervision

Synopsis of Graduate Degree Programs

(Continued)

MS	Speech-Language Pathology	PhD	Human Development
MS	Sports Nutrition and Exercise Science		<ul style="list-style-type: none"> • Educational Administration
MSW	Social Work		<ul style="list-style-type: none"> • Health Promotion
EdS	School Psychology		<ul style="list-style-type: none"> • Higher Education Administration • Instructional Leadership • Social Work
		PsyD	Clinical Psychology

Total Master's Degree Programs: 34
Educational Specialist Degrees: 1
Total Doctoral Degrees: 2, with 5 PhD tracks

**Degrees Granted by College and Department
July 1, 2009 to June 30, 2014**

School of Architecture

	<u>2009-10</u>	<u>2010-11</u>	<u>2011-12</u>	<u>2012-13</u>	<u>2013-14</u>
Architecture					
B. Arch					32
B.E.D.A				4	3
B.F.A.		13	13	16	15
M.A.		7	9	4	10
Total Bachelors		13	13	20	50
Total Masters		7	9	4	10

Insalaco College of Creative and Performing Arts

	<u>2009-10</u>	<u>2010-11</u>	<u>2011-12</u>	<u>2012-13</u>	<u>2013-14</u>
Art					
B.A.	22	24	18	19	31
B.F.A.	39	51	44	41	36
M.A.	11	12	16	18	5
M.F.A.	16	19	13	15	5
Communication Arts					
B.A.	22	12	26	18	25
M.A.	8	16	9	12	16
M.S.	8	0	0	0	0
Music, Theatre & Dance					
B.A.	7	8	7	7	2
B.M.	9	10	10	17	10
M.A.	4	0	1	1	0
M.M.T.					1
Total Bachelors	99	105	105	102	104
Total Masters	47	47	39	46	27

Degrees Granted by College and Department
July 1, 2009 to June 30, 2014
 (continued)

Reap College of Education and Human Development

	<u>2009-10</u>	<u>2010-11</u>	<u>2011-12</u>	<u>2012-13</u>	<u>2013-14</u>
Communication Science and Disorders					
B.S.	16	21	24	18	23
M.S.	21	15	21	22	21
Counseling/Psychology					
B.S.	27	30	25	32	31
M.A.	37	28	45	36	41
M.S.	18	11	8	5	6
Ed.S.	4	2	16	10	7
Psy.D.	11	10	5	5	12
Education¹					
B.S.	38	38	36	42	30
M.A.T.	28	19	20	23	10
M.Ed.	3	5	1	1	1
M.S.	22	32	29	25	14
Total Bachelors	81	89	85	92	84
Total Masters	129	110	124	112	93
Total Educational Specialist	4	2	16	10	7
Total Doctoral	11	10	5	5	12

Center for Interdisciplinary Studies²

	<u>2009-10</u>	<u>2010-11</u>	<u>2011-12</u>	<u>2012-13</u>	<u>2013-14</u>
Human Development					
Ph.D.	10	14	17	6	11

¹ Special Education is now being reported within the Education department

² The Center for Interdisciplinary Studies was created in July 2013. PhD Human Development was moved from EHD to CIS.

Degrees Granted by College and Department
July 1, 2009 to June 30, 2014
 (continued)

College of Health and Human Services

	<u>2009-10</u>	<u>2010-11</u>	<u>2011-12</u>	<u>2012-13</u>	<u>2013-14</u>
Health and Physical Education					
B.S.	16	25	30	23	25
M.S.	4	1	2	8	5
Nursing					
B.A.	3	2	0	0	0
B.S.	0	1	1	0	0
B.S.N.	23	23	18	21	4
M.S.	8	0	1	1	0
Nutrition and Dietetics					
B.S.	22	32	30	28	32
M.S.	10	7	9	13	9
Physician Assistant					
B.S.	15	0	0	0	0
M.S.	28	29	29	38	39
Social Work/Administrative Studies					
B.A.	0	0	6	4	4
B.S.W.	10	12	14	15	12
M.H.S.A.	4	9	13	8	15
M.P.A.	6	9	11	5	5
M.S.	0	2	1	0	2
M.S.W.	117	113	124	85	115
Total Bachelors	89	95	99	91	77
Total Masters	177	170	190	158	181

**Degrees Granted by College and Department
July 1, 2009 to June 30, 2014
(continued)**

Munley College of Liberal Arts and Sciences

	<u>2009-10</u>	<u>2010-11</u>	<u>2011-12</u>	<u>2012-13</u>	<u>2013-14</u>
School of Business and Global Innovation					
B.A.	1	0	0	0	0
B.B.A.	54	68	64	66	57
M.B.A.	13	22	17	10	15
M.S.	0	0	1	0	1
English					
B.A.	19	13	19	10	12
Foreign Languages					
B.A.	2	4	2	3	5
Mathematics					
B.S.	4	5	3	7	4
Philosophy					
B.A.	0	1	3	2	1
Religious Studies					
B.A.	0	2	2	1	2
Science					
B.S.	29	50	51	44	48
M.S.	11	8	17	1	12
Social Sciences					
B.A.	25	32	40	21	37
B.S.	0	0	1	0	0
M.S.	11	7	8	7	8
Ad Hoc					
B.A.	0	1	0	0	0
Total Bachelors	135	176	185	154	166
Total Masters	33	37	43	18	36

University Overall

	<u>2009-10</u>	<u>2010-11</u>	<u>2011-12</u>	<u>2012-13</u>	<u>2013-14</u>
Total Bachelors Awarded	418	478	487	459	481
Total Masters Awarded	388	371	405	338	362
Total Educational Specialist Awarded	4	2	16	10	7
Total Doctoral Awarded	21	23	22	11	23
Total All Degrees Awarded	831	874	930	818	873

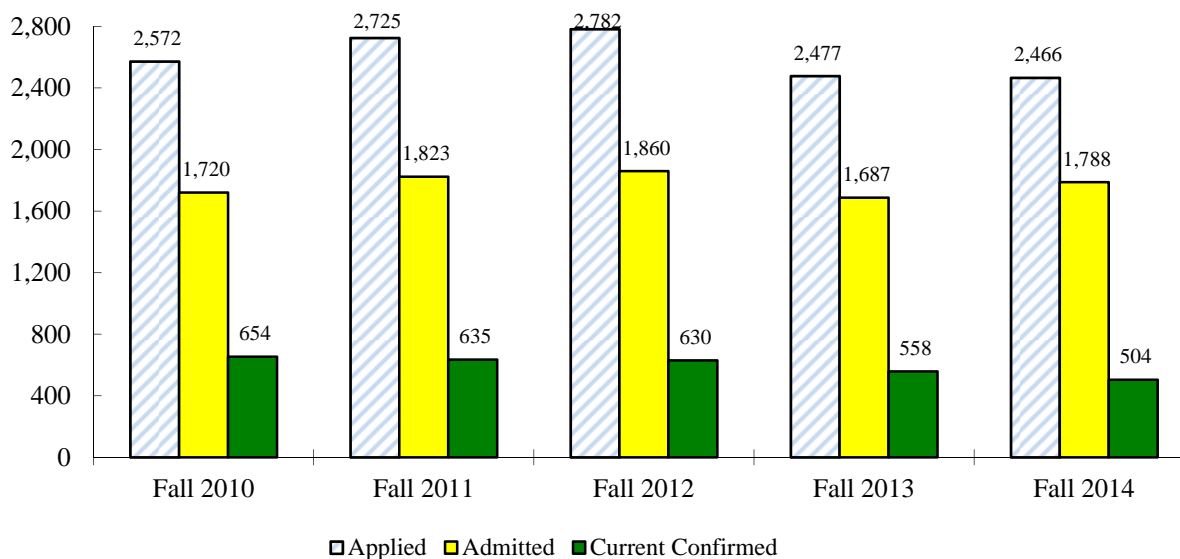
Admissions Activity

Undergraduate

Fall Full- and Part-time New Students

	2010	2011	2012	2013	2014	2010-14 % change
Applied	2,572	2,725	2,782	2,477	2,466	-4.1%
Freshman	2,062	2,203	2,284	2,021	2,111	2.4%
Transfer	492	508	498	456	355	-27.8%
Other	18	14	0	0	0	
Offered Admission	1,720	1,823	1,860	1,687	1,788	4.0%
Freshman	1,455	1,543	1,578	1,441	1,566	7.6%
Transfer	257	272	282	246	222	-13.6%
Other	8	8	0	0	0	
Offer Rate	66.9%	66.9%	66.9%	68.1%	72.5%	
Freshman	70.6%	70.0%	69.1%	71.3%	74.2%	
Transfer	52.2%	53.5%	56.6%	53.9%	62.5%	
Other	44.4%	57.1%				
Current Confirmed	654	635	630	558	504	-22.9%
Freshman	507	466	472	419	373	-26.4%
Transfer	144	164	158	139	131	-9.0%
Other	3	5	0	0	0	
Yield Rate	38.0%	34.8%	33.9%	33.1%	28.2%	
Freshman	34.8%	30.2%	29.9%	29.1%	23.8%	
Transfer	56.0%	60.3%	56.0%	56.5%	59.0%	
Other	37.5%	62.5%				

Trends in Undergraduate Admissions Activity
Fall 2010 to Fall 2014



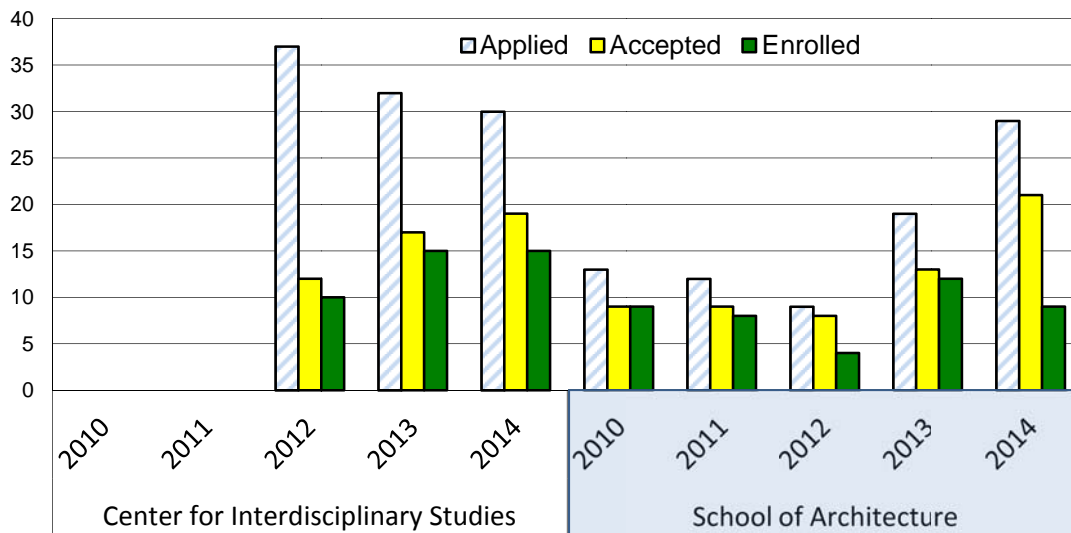
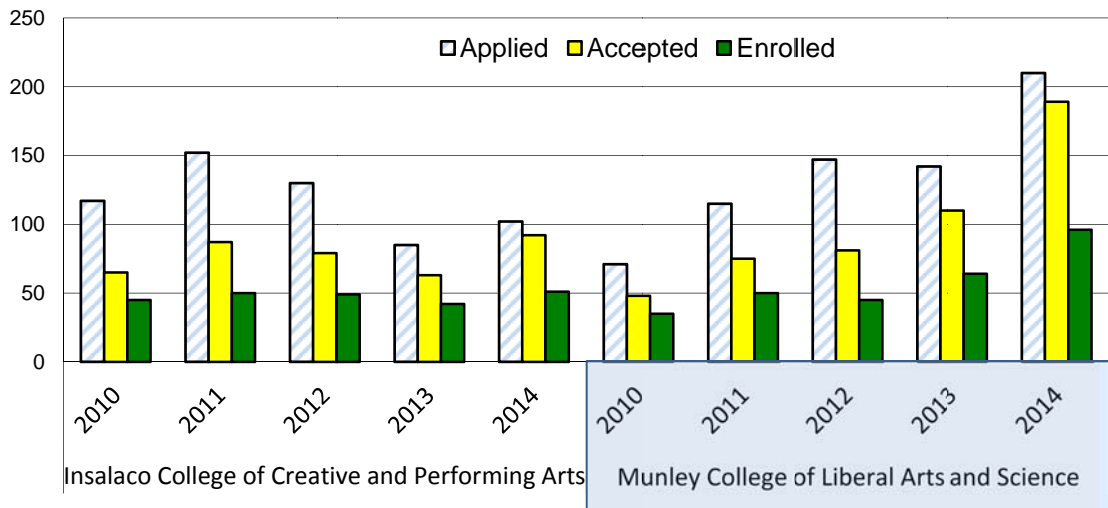
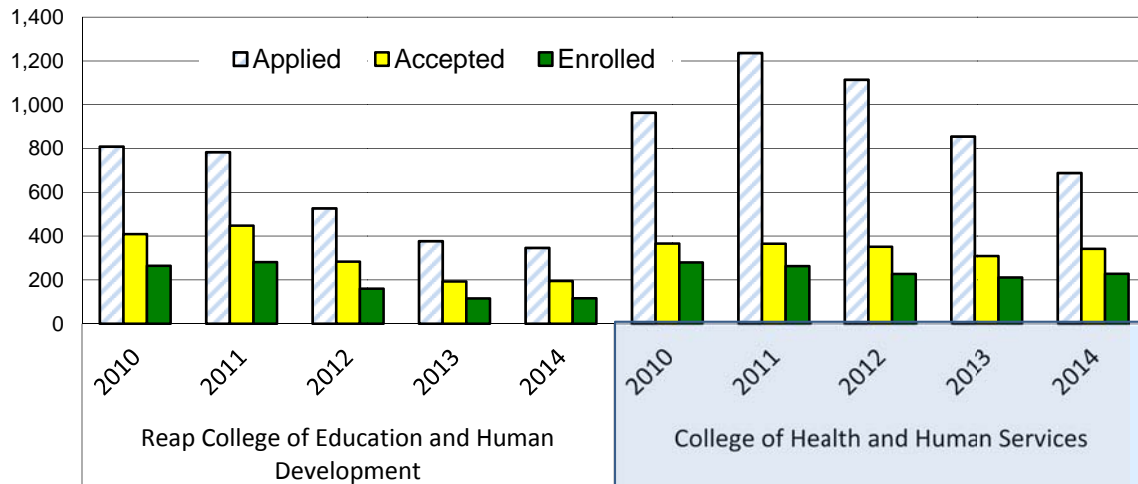
Admissions Activity (continued)
Graduate
Full- and Part-time New Students (by calendar year)

	<u>2010</u>	<u>2011</u>	<u>2012</u>	<u>2013</u>	<u>2014</u>	
CIS³						
Applied			37	32	30	
Accepted			12	17	19	
Enrolled			10	15	15	
CPA						
Applied	117	152	130	85	102	
Accepted	65	87	79	63	92	
Enrolled	45	50	49	42	51	
EHD⁴						
Applied	809	783	527	377	346	
Accepted	409	448	283	193	195	
Enrolled	264	281	160	115	116	
HHS						
Applied	964	1,236	1,114	855	688	
Accepted	366	365	351	309	342	
Enrolled	280	263	227	211	228	
LAS						
Applied	71	115	147	142	210	
Accepted	48	75	81	110	189	
Enrolled	35	50	45	64	96	
SOA						
Applied	13	12	9	19	29	
Accepted	9	9	8	13	21	
Enrolled	9	8	4	12	9	
TOTAL						2010-14 % change
Applied	1,974	2,298	1,964	1,510	1,405	-28.8
Accepted	897	989	814	705	858	-4.3
Enrolled	633	652	495	459	515	-18.6

³ The Center for Interdisciplinary Studies was created in July 2013. PhD Human Development was moved from EHD to CIS.

⁴ The Center for Interdisciplinary Studies was created in July 2013. PhD Human Development was moved from EHD to CIS.

Graduate Admissions Funnel by College/School⁵ 2010 - 2014



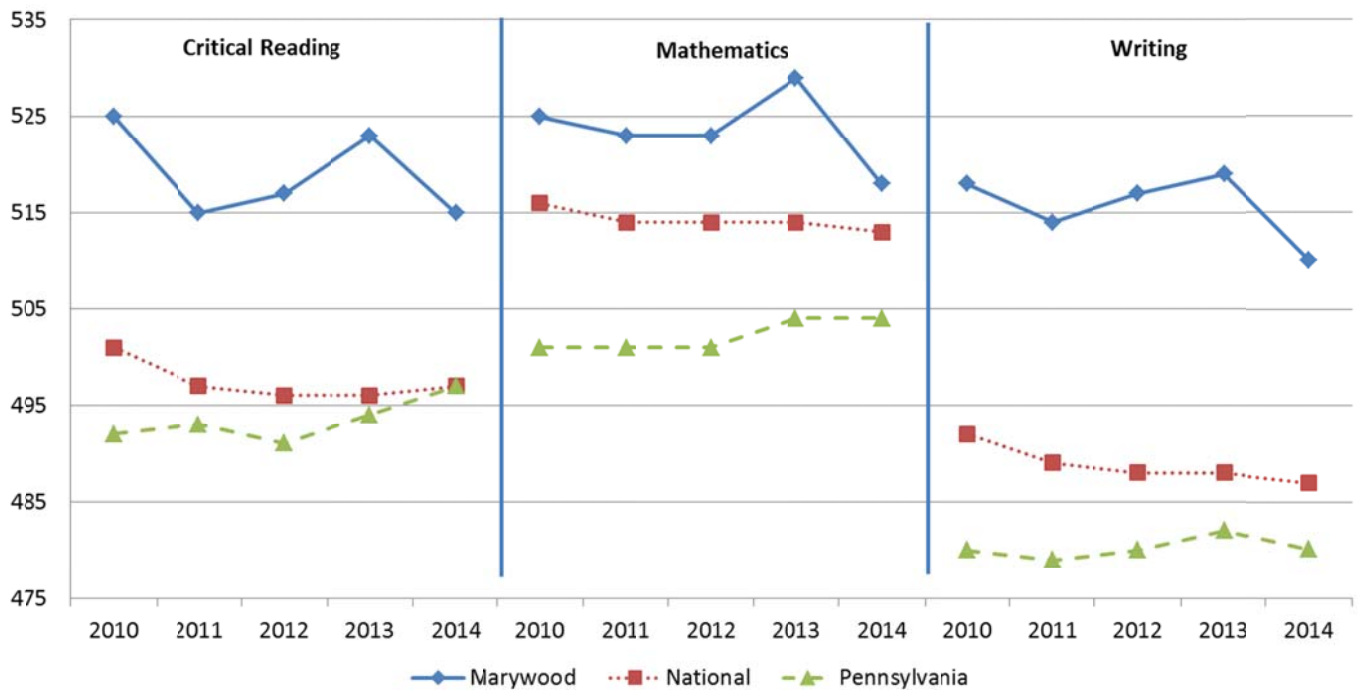
⁵ Note different scales on graph axes

Source: Marywood University Office of Admissions

Average SAT Scores for First-time Full-time Students

	Critical Reading	Math	Writing	Total
Fall '08	522	518	510	1550
Fall '09	528	522	520	1570
Fall '10	525	525	518	1568
Fall '11	515	523	514	1552
Fall '12	517	523	517	1557
Fall '13	523	529	519	1571
Fall '14	515	518	510	1541

Trends in SAT Scores of First-time Full-time Students



Fall Headcount and FTE* Enrollment by College and Time Status⁶

Insalaco College of Creative and Performing Arts

	<u>2010</u>	<u>2011</u>	<u>2012</u>	<u>2013</u>	<u>2014</u>
Undergraduate					
FT	438	396	375	362	328
PT	<u>25</u>	<u>11</u>	<u>21</u>	<u>17</u>	<u>14</u>
Total	463	407	396	379	342
FTE	446.3	399.7	382.0	367.7	333.5
Graduate					
FT	68	49	44	38	76
PT	<u>71</u>	<u>68</u>	<u>55</u>	<u>57</u>	<u>18</u>
Total	139	117	99	95	94
FTE	91.7	71.7	62.3	57.0	82.9
Total					
FT	506	445	419	400	404
PT	<u>96</u>	<u>79</u>	<u>76</u>	<u>74</u>	<u>32</u>
Total	602	524	494	474	436
FTE	538.0	471.3	444.3	424.7	416.4

Reap College of Education and Human Development⁷

	<u>2010</u>	<u>2011</u>	<u>2012</u>	<u>2013</u>	<u>2014</u>
Undergraduate					
FT	382	363	342	334 [†]	292
PT	<u>9</u>	<u>11</u>	<u>6</u>	<u>6</u>	<u>10</u>
Total	391	374	348	340[†]	302
FTE	385.0	366.7	344.0	336.0 [†]	295.9
Graduate					
FT	192	193	197	182	228
PT	<u>200</u>	<u>187</u>	<u>142</u>	<u>131</u>	<u>77</u>
Total	392	380	339	313	305
FTE	258.7	255.3	244.3	225.7	257.4
Total					
FT	574	556	539	516 [†]	520
PT	<u>209</u>	<u>198</u>	<u>148</u>	<u>137</u>	<u>87</u>
Total	783	754	687	653[†]	607
FTE	643.7	622.0	588.3	561.7 [†]	553.3

*Prior to Fall 2014, FTE = FT headcount + (PT headcount/3)

From Fall 2014 forward, using IPEDS methodology, FTE = FT headcount + (UG PT headcount * 0.392857) + (GR PT headcount * 0.382059)

[†] Students moved from LAS to correct college

⁶ Beginning in Fall 2014, the FT credit load for Graduate students was reduced from 9 credits to 6 credits.

⁷ The Center for Interdisciplinary Studies was created in July 2013. PhD Human Development was moved from EHD to CIS.

Fall Headcount and FTE* Enrollment by College and Time Status
(continued)

College of Health and Human Services

	<u>2010</u>	<u>2011</u>	<u>2012</u>	<u>2013</u>	<u>2014</u>
Undergraduate					
FT	402	412	390	309 [‡]	314
PT	<u>17</u>	<u>18</u>	<u>22</u>	<u>13</u>	<u>24</u>
Total	419	430	412	322[‡]	338
FTE	407.7	418.0	397.3	313.3 [‡]	323.4
Graduate					
FT	316	288	304	296	414
PT	<u>190</u>	<u>193</u>	<u>136</u>	<u>144</u>	<u>31</u>
Total	506	481	440	440	445
FTE	379.3	352.3	349.3	344.0	425.8
Total					
FT	718	700	694	605 [‡]	728
PT	<u>207</u>	<u>211</u>	<u>158</u>	<u>157</u>	<u>55</u>
Total	925	911	852	762[‡]	783
FTE	787.0	770.3	746.7	657.3 [‡]	749.3

Munley College of Liberal Arts and Sciences

	<u>2010</u>	<u>2011</u>	<u>2012</u>	<u>2013</u>	<u>2014</u>
Undergraduate					
FT	731	748	745	718 [‡]	656
PT	<u>55</u>	<u>44</u>	<u>42</u>	<u>42</u>	<u>38</u>
Total	786	792	787	760[‡]	694
FTE	751.4	763.9	763.1	732.0 [‡]	670.9
Graduate					
FT	30	37	28	44	118
PT	<u>51</u>	<u>43</u>	<u>41</u>	<u>57</u>	<u>16</u>
Total	81	80	69	101	134
FTE	50.3	53.9	43.9	63.7	124.1
Total					
FT	761	785	773	762 [‡]	774
PT	<u>106</u>	<u>87</u>	<u>83</u>	<u>99</u>	<u>54</u>
Total	867	872	856	861[‡]	828
FTE	801.7	817.8	807.0	795.0 [‡]	795.0

*Prior to Fall 2014, FTE = FT headcount + (PT headcount/3)

From Fall 2014 forward, using IPEDS methodology, FTE = FT headcount + (UG PT headcount * 0.392857) + (GR PT headcount * 0.382059)

[‡] Students moved from LAS to correct college

Fall Headcount and FTE* Enrollment by College and Time Status
(continued)

School of Architecture

	2010	2011	2012	2013	2014
Undergraduate					
FT	146	187	230	234	198
PT	<u>1</u>	<u>2</u>	<u>1</u>	<u>3</u>	<u>5</u>
Total	147	189	231	237	203
FTE	146.3	189.0	230.3	235.0	200.0
Graduate					
FT	6	8	6	10	8
PT	<u>1</u>	<u>1</u>	<u>0</u>	<u>1</u>	<u>0</u>
Total	7	9	6	11	8
FTE	6.3	8.3	6.0	10.3	8.0
Total					
FT	152	195	236	244	206
PT	<u>2</u>	<u>3</u>	<u>1</u>	<u>4</u>	<u>5</u>
Total	154	198	237	248	211
FTE	152.7	197.3	236.3	245.3	208.0

Center for Interdisciplinary Studies⁸

	2010	2011	2012	2013	2014
Graduate					
FT	4	7	5	6	31
PT	<u>83</u>	<u>69</u>	<u>65</u>	<u>61</u>	<u>36</u>
Total	87	76	70	67	67
FTE	31.7	30.0	26.7	26.3	44.8

Registrar

	2010	2011	2012	2013	2014
Undergraduate					
FT	7	2	25	47 [†]	48
PT	<u>54</u>	<u>61</u>	<u>45</u>	<u>63</u> [†]	<u>76</u>
Total	61	63	70	110	124
FTE	25.0	22.3	40.0	68.0 [†]	77.9

*Prior to Fall 2014, FTE = FT headcount + (PT headcount/3)

From Fall 2014 forward, using IPEDS methodology, FTE = FT headcount + (UG PT headcount * 0.392857) + (GR PT headcount * 0.382059)

[†] IEP students reclassified from PT to FT

⁸ The Center for Interdisciplinary Studies was created in July 2013. PhD Human Development was moved from EHD to CIS.

Fall Headcount and FTE* Enrollment by College and Time Status
(continued)

Total University

	<u>2010</u>	<u>2011</u>	<u>2012</u>	<u>2013</u>	<u>2014</u>
Undergraduate					
FT	2,106	2,110	2,107	2,004 [‡]	1,836
PT	<u>161</u>	<u>145</u>	<u>137</u>	<u>144[‡]</u>	<u>167</u>
Total	2,267	2,255	2,244	2,148	2,003
FTE	2,159.7	2,158.3	2,152.7	2,052.0 [‡]	1,901.6
Graduate					
FT	616	582	584	576	875
PT	<u>596</u>	<u>561</u>	<u>439</u>	<u>451</u>	<u>178</u>
Total	1,212	1,143	1,023	1,027	1,053
FTE	814.7	769.0	730.3	726.3	943.0
Total					
FT	2,722	2,692	2,691	2,580 [‡]	2,711
PT	<u>757</u>	<u>706</u>	<u>576</u>	<u>595[‡]</u>	<u>345</u>
Total	3,479	3,398	3,267	3,175	3,056
FTE	2,974.3	2,927.3	2,883.0	2,778.3 [‡]	2,844.6

*Prior to Fall 2014, FTE = FT headcount + (PT headcount/3)

From Fall 2014 forward, FTE = FT headcount + (UG PT headcount * 0.392857) + (GR PT headcount * 0.382059)

[‡] IEP students reclassified from PT to FT

Fall Headcount Enrollment by College and Ethnicity/Race⁹

	2010	2011	2012	2013	2014
Insalaco College of Creative and Performing Arts					
Non-resident Alien	3	4	4	7	16
Hispanic	20	18	20	16	21
Asian					1
Black, Non-Hispanic					8
White	510	431	399	372	335
Other/Unknown	69	68	70	76	47
Two or more		3	2	3	8
Reap College of Education and Human Development¹⁰					
Non-resident Alien	5	7	5	7	7
Hispanic	17	14	16	17*	23
Asian					10
Black, Non-Hispanic					6
White	692	653	566	543*	502
Other/Unknown	69	75	97	83	55
Two or more		5	3	3	4
College of Health and Human Services					
Non-resident Alien	11	5	14	23	28
Hispanic	27	26	45	45	44
Asian					8
Black, Non-Hispanic					32
Hawaiian/Pacific Islander					2
White	753	724	603	525*	559
Other/Unknown	134	152	207	165*	106
Two or more		3	2	4	4
Munley College of Liberal Arts and Sciences					
Non-resident Alien	13	10	7	32	59
Hispanic	34	38	48	49*	42
Asian					24
Black, Non-Hispanic					14
Hawaiian/Pacific Islander					1
White	743	708	668	633*	593
Other/Unknown	77	114	125	135*	77
Two or more		2	8	12	18
School of Architecture					
Non-resident Alien	0	0	2	1	3
Hispanic	5	11	13	13	11
Asian					3
Black, Non-Hispanic					4
Hawaiian/Pacific Islander					1
White	131	163	193	206*	168
Other/Unknown	18	23	28	26*	19
Two or more		1	1	2	2

*Students moved from LAS to correct college

⁹ As of July 1, 2011, expanded IPEDS category, Race/Ethnicity, included "Two or more"

¹⁰ As of July 1, 2013 the PhD program in Human Development was moved from the College of Education and Human Development to the Center for Interdisciplinary Studies.

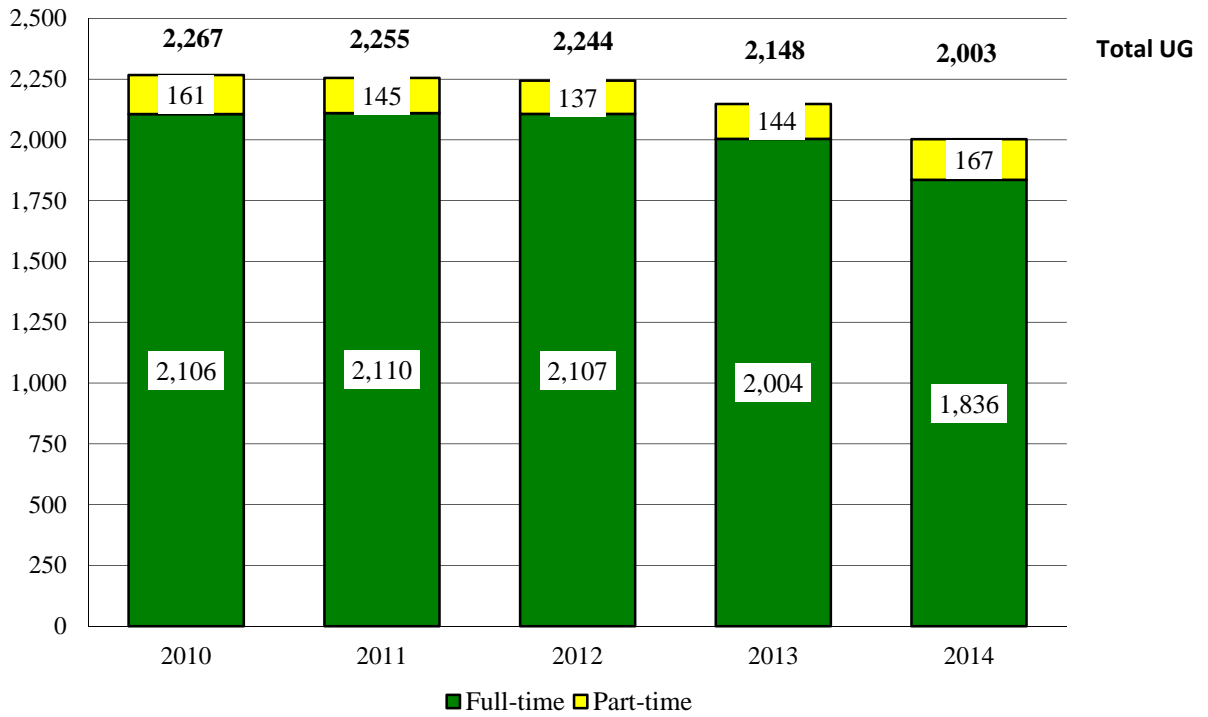
Fall Headcount Enrollment by College and Ethnicity/Race (continued)

	2010	2011	2012	2013	2014
Center for Interdisciplinary Studies¹¹					
Non-resident Alien	2	1	2	2	2
Hispanic	1	0	1	2	2
Black, Non-Hispanic					1
White	76	66	58	56	57
Other/Unknown	8	9	9	7	5
Registrar					
Non-resident Alien	16	15	21	46	45
Hispanic	1	1	0	1	0
White	24	24	16	10	9
Other/Unknown	20	23	33	53	70
TOTAL UNDERGRADUATE					
Non-resident Alien	31	25	31	68	68
Hispanic	71	81	105	104	111
Asian					32
Black, Non-Hispanic					40
Hawaiian/Pacific Islander					2
White	1,950	1,877	1,806	1,652	1,499
Other/Unknown	215	263	286	301	220
Two or more		8	16	23	31
TOTAL GRADUATE					
Non-resident Alien	19	17	24	50	92
Hispanic	34	28	19	39	32
Asian					14
Black, Non-Hispanic					25
Hawaiian/Pacific Islander					2
White	979	892	697	693	724
Other/Unknown	180	200	283	244	159
Two or more		6	0	1	5
TOTAL UNIVERSITY					
Non-resident Alien	50	42	55	118	160
Hispanic	105	109	124	143	143
Asian					46
Black, Non-Hispanic					65
Hawaiian/Pacific Islander					4
White	2,929	2,769	2,503	2,345	2,223
Other/Unknown	395	464	569	545*	379
Two or more		14	16	24	36

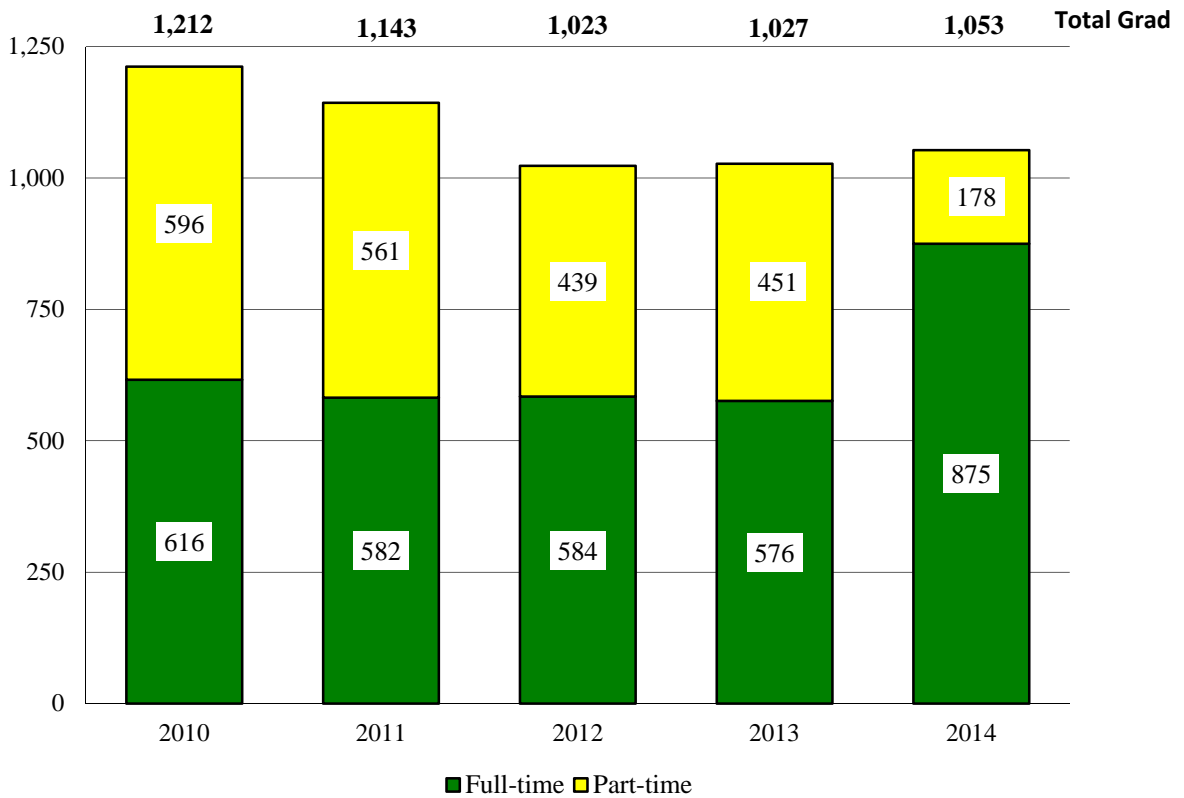
*Typographical error corrected

¹¹ As of July 1, 2013 the PhD program in Human Development was moved from the College of Education and Human Development to the Center for Interdisciplinary Studies.

Trends in Total Undergraduate Enrollment Fall 2010 to Fall 2014



Trends in Total Graduate Enrollment Fall 2010 to Fall 2014



Headcount Enrollment by College, Department and Level – Fall 2010 to Fall 2014

		2010	2011	2012	2013	2014
Insalaco College of Creative and Performing Arts						
Art	Undergraduate	296	251	228	213	181
	Graduate	91	77	65	66	62
Communication Arts	Undergraduate	73	76	82	77	74
	Graduate	34	28	25	17	26
Music, Theatre & Dance	Undergraduate	91	76	84	89	87
	Graduate	8	5	3	5	6
Dean/Academic Advising	Undergraduate	3	4	2	0	0
	Graduate	6	7	6	7	0
Reap College of Education and Human Development¹²						
Communication Disorders	Undergraduate	85	77	83	95	91
	Graduate	20	29	24	24	26
Counseling/Psychology	Undergraduate	121	126	131	139	122
	Graduate	163	168	166	180	171
Education	Undergraduate	149	150	115	106*	89
	Graduate	195	169	127	103	106
Dean/Academic Advising	Undergraduate	36	21	19	0	0
	Graduate	14	14	22	6	2
Center for Interdisciplinary Studies¹³						
Human Development	Graduate	87	76	70	67	67

*Students moved from LAS to correct college

¹² As of July 1, 2013, the Center for Interdisciplinary Studies was formed and the PhD Human Development program was moved to CIS.

¹³ Ibid

Headcount by College, Department and Level – Fall 2010 to Fall 2014

(continued)

		2010	2011	2012	2013	2014
College of Health and Human Services						
Health & Physical Education	Undergraduate	112	116	92	76	72
	Graduate	4	2	14	6	8
Nursing ¹⁴	Undergraduate	109	115	123	73*	103
	Graduate	3	2	1	0	0
Nutrition and Dietetics	Undergraduate	125	137	128	115	110
	Graduate	60	62	55	53	50
Physician Assistant	Undergraduate	0	0	0	1	0
	Graduate	51	54	62	67	68
School of Social Work and Administrative Studies ¹⁵	Undergraduate	61	59	57	57	53
	Graduate	372	341	284	308	315
Dean/Academic Advising	Undergraduate	12	3	12	0	0
	Graduate	16	20	24	6	4
Munley College of Liberal Arts and Sciences						
School of Business and Global Innovation ¹⁶	Undergraduate	252	228	234	230	223
	Graduate	45	42	43	73	107
English	Undergraduate	57	59	54	39	38
Foreign Languages	Undergraduate	12	17	17	15	14
Mathematics	Undergraduate	25	25	22	18	18
Philosophy	Undergraduate	6	3	2	3	3
Religious Studies	Undergraduate	3	3	5	2	4
Science	Undergraduate	214	224	221	250	212
	Graduate	11	14	6	13	13
Social Science	Undergraduate	137	135	115	123	115
	Graduate	21	16	17	12	13
Dean/Academic Advising	Undergraduate	80	98	117	80*	67
	Graduate	4	8	3	3	1
School of Architecture						
Architecture	Undergraduate	0	0	0	31	20
	Graduate					2
Environmental Design	Undergraduate	88	120	159	138*	123
Interior Architecture	Undergraduate	59	69	72	68*	60
	Graduate	7	9	6	11	6
Registrar						
	IEP	16	15	23	43	59
	Undergraduate	45	48	47	67	77

*Students moved from LAS to correct college

‡ Students assigned to correct major

¹⁴ As of July 1, 2011, the MPA Public Administration program and the BA and MHSA Health Services Administration programs were moved from the Nursing department to the School of Social Work and Administrative Studies.

¹⁵ Ibid.

¹⁶ As of July 1, 2014 the Business Department was renamed to the School of Business and Global Innovation.

Headcount Enrollment by College and Gender

	2010	2011	2012	2013	2014	
					N	%
Insalaco College of Creative and Performing Arts						
Undergraduate						
Women	340	301	306	290	255	74.6
Men	<u>123</u>	<u>106</u>	<u>90</u>	<u>89</u>	<u>87</u>	25.4
Total	463	407	396	379	342	
Graduate						
Women	102	79	75	72	67	71.3
Men	<u>37</u>	<u>38</u>	<u>24</u>	<u>23</u>	<u>27</u>	28.7
Total	139	117	99	95	94	
Reap College of Education and Human Development¹⁷						
Undergraduate						
Women	354	339	313	299*	269	89.1
Men	<u>37</u>	<u>35</u>	<u>35</u>	<u>41*</u>	<u>33</u>	10.9
Total	391	374	348	340*	302	
Graduate						
Women	324	301	282	249	239	78.4
Men	<u>68</u>	<u>79</u>	<u>57</u>	<u>64</u>	<u>66</u>	21.6
Total	392	380	339	313	305	
College of Health and Human Services						
Undergraduate						
Women	323	323	319	251*	271	80.2
Men	<u>96</u>	<u>107</u>	<u>93</u>	<u>71</u>	<u>67</u>	19.8
Total	419	430	412	322	338	
Graduate						
Women	419	410	368	355	359	80.7
Men	<u>87</u>	<u>71</u>	<u>72</u>	<u>85</u>	<u>86</u>	19.3
Total	506	481	440	440	445	
Munley College of Liberal Arts and Sciences						
Undergraduate						
Women	437	456	446	409*	361	52.0
Men	<u>349</u>	<u>336</u>	<u>341</u>	<u>351*</u>	<u>333</u>	48.0
Total	786	792	787	760*	694	
Graduate						
Women	46	44	28	42	75	56.0
Men	<u>35</u>	<u>36</u>	<u>41</u>	<u>59</u>	<u>59</u>	44.0
Total	81	80	69	101	134	

*Students moved from LAS to correct college

¹⁷ As of July 1, 2013, the Center for Interdisciplinary Studies was formed and the PhD Human Development program was moved to CIS.

Headcount Enrollment by College and Gender

(continued)

	<u>2010</u>	2011	2012	2013	2014	
					N	%
School of Architecture						
Undergraduate						
Women	85	106	122	115	101	49.8
Men	<u>62</u>	<u>83</u>	<u>109</u>	<u>122</u>	<u>102</u>	50.2
Total	147	189	231	237	203	
Graduate						
Women	7	8	6	11	6	75.0
Men	<u>0</u>	<u>1</u>	<u>0</u>	<u>0</u>	<u>2</u>	25.0
Total	7	9	6	11	8	
Center for Interdisciplinary Studies¹⁸						
Graduate						
Women	62	53	46	45	44	65.7
Men	<u>25</u>	<u>23</u>	<u>24</u>	<u>22</u>	<u>23</u>	34.3
Total	87	76	70	67	67	
Registrar						
Undergraduate						
Women	42	33	44	70	74	59.7
Men	<u>19</u>	<u>30</u>	<u>26</u>	<u>40</u>	<u>50</u>	40.3
Total	61	63	70	110	124	
Total University						
Undergraduate						
Women	1,581	1,558	1,550	1,434	1,331	66.5
Men	<u>686</u>	<u>697</u>	<u>694</u>	<u>714</u>	<u>672</u>	33.5
Total	2,267	2,255	2,244	2,148	2,003	
Graduate						
Women	960	895	805	774	790	75.0
Men	<u>252</u>	<u>248</u>	<u>218</u>	<u>253</u>	<u>263</u>	25.0
Total	1,212	1,143	1,023	1,027	1,053	

¹⁸ As of July 1, 2013, the Center for Interdisciplinary Studies was formed and the PhD Human Development program was moved to CIS.

Fall Full-time Undergraduate Enrollment by On/Off-Campus Living

		Fall 2010	Fall 2011	Fall 2012	Fall 2013	Fall 2014
On-Campus						
Freshmen		388	393	371	335	283
Total	Women	764	783	771	678	604
	Men	<u>249</u>	<u>282</u>	<u>253</u>	<u>248</u>	<u>217</u>
Total		1,013	1,065	1,024	926	821
Percent of Total Full-time		48%	50%	49%	47%	46%
Off-Campus						
Full-time	Women	708	695	699	636	589
	Men	<u>378</u>	<u>352</u>	<u>386</u>	<u>394</u>	<u>377</u>
Total		1,086	1,047	1,085	1,030	966
Part-time	Women	66	80	80	46	62
	Men	<u>38</u>	<u>63</u>	<u>55</u>	<u>30</u>	<u>27</u>
Total		104	143	135	76	89

Students with Disabilities

	<u>2010</u>	<u>2011</u>	<u>2012</u>	<u>2013</u>	<u>2014</u>
Undergraduate:	136 6.0%	128 5.7%	134 6.0%	155 7.2%	143 7.0%
Graduate:	34 2.8%	32 2.8%	41 4.0%	43 4.2%	40 3.8%

Study Abroad Program Locations and Majors of Students Fall 2014

China	CAPA Beijing Capital Normal University	BA Spanish
England	King's College	BA Philosophy
England	Queen Mary	BA English
Italy	Institute at Palazzo Rucellai	BEDA Environmental Design - Architecture
Italy	Institute at Palazzo Rucellai	BFA Design (Interior Architecture/Design)
Italy	SACI	BA Art Therapy
Italy	SACI	BFA Design (Graphic Design)

23 students are currently studying abroad

International Student Enrollment

	Fall 2010		Fall 2011		Fall 2012		Fall 2013		Fall 2014	
	N	%	N	%	N	%	N	%	N	%
Undergraduate	31	1.4	25	1.1	31	1.4	68	3.2	80	3.9
Graduate	19	1.6	17	1.5	24	2.3	50	4.9	92	8.7

By Country of Origin – Fall 2014

Undergraduate:

China	11
Congo	1
Honduras	1
Iraq	2
Malaysia	2
Mexico	1
Republic of Korea	2
Saudi Arabia	59
Tanzania	1

Total Undergraduate: 80 (4.0%)

Graduate:

China	10
Greece	1
Haiti	1
India	8
Iraq	10
Saudi Arabia	62
Total Graduate:	92 (8.7%)

By Major Course of Study – Fall 2014

Undergraduate:

Undeclared, Program Interest Unspecified
 BA English/Secondary Education
 BA History/Political Science (Pre-law)
 BBA Aviation Management (Airline/Port Mgt)
 BBA Aviation Management (Pilot/Flight Op)
 BBA Business Information Technology
 BBA Financial Planning
 BBA International Business
 BBA Management
 BFA Design (Graphic Design)
 BFA Design (Interior Arch/Design)
 BFA Studio Art (Illustration)
 BM Music Performance
 BS Biology
 BS Medical Laboratory Science
 BS Nutrition and Dietetics
 BS Psychology
 Intensive English Program

Graduate:

Certificate: Dietetics Internship
 MA Art Therapy
 MA Communication Arts (Interdisciplinary)
 MA Communication Arts (Media Management)
 MA Mental Health Counseling (General)
 MA Music Education
 MA Psychology (Clinical Services)
 MA Studio Art (Interior Architecture)
 MA Studio Art (Printmaking)
 MBA Bus Adm (Finance/Investment)
 MBA Bus Adm (General Management)
 MEd Instructional Leadership
 MFA Visual Arts (Clay)
 MFA Visual Arts (Painting)
 MHSA Health Services Administration
 MS Biotechnology
 MS Early Childhood Intervention
 MS Gerontology
 MS Higher Education Administration
 MS Management Information Systems
 MS Nutrition
 MSW Social Work
 Ph.D. Human Development (Health Promotion)
 PsyD Clinical Psychology

Honors Program - Majors Represented

B Pre-Physician Assistant Studies	BFA Studio Art (Illustration)
BA Art Therapy	BFA Studio Art (Painting)
BA Arts Administration (Art)	BM Music Education
BA Arts Administration (Theatre)	BM Music Performance
BA Broadcast Journalism	BM Music Therapy
BA Criminal Justice	BS Athletic Training
BA Cultural Studies	BS Biology
BA Digital Media & Broadcast Production	BS Biology (Pre-professional)
BA English	BS Biotechnology
BA English/Secondary Education	BS Communication Science & Disorders (Pre-professional)
BA History/Political Science (Pre-law)	BS Early Childhood Education
BA Philosophy	BS Early Childhood Education/Special Education PK-8
BA Spanish/Secondary Education	BS Mathematics
BBA Accounting	BS Nutrition and Dietetics
BBA Marketing	BS Psychology
BEDA Environmental Design-Architecture	BS Psychology (Clinical Practice)
BFA Design (Graphic Design)	BSN Nursing – Pre-service
BFA Design (Interior Architecture/Design)	Undeclared, Program Interest Unspecified

Honors Courses Offered in 2014-2015**Fall 2014**

ART	History of Art I 19 th Century Art	HIST	Roots of the Modern World Mickey Mouse to Manga Independent Study
BIOL	General Microbiology Biochemistry	MATH	Linear Algebra
CHEM	Organic Chemistry	MUSC	History of Music I
CSD	Speech and Language Development	PHIL	Introduction to Philosophy Political Philosophy Philosophy of Music
EDUC	Early Childhood Curriculum I	PSYC	General Psychology Special Topics: Positive Psychology Contemporary Approaches to Learning
ENGL	Composition and Rhetoric Contemporary Fantasy Children's Literature Introduction to Contemporary Am Novel Special Topics: Digital Shakespeare Business/Technical Writing Feminist Writing and Rhetoric	R ST	Modern Belief
		SPAN	Intensive Grammar Review Spanish Civilization
		UNIV	Living Responsibly in an Interdependent World

Spring 2015

ARCH	Structures II	HIST	Global History of the Twentieth Century
ART	History of Art II Art in the Modern Era Visual Concepts Computer Graphics II	MUSC	History of Music II
BIOL	Immunology	N D	Nutrition II Theory of Medical Nutrition Therapy I
CHEM	Elements of Medicinal Chemistry	PHIL	Philosophy of Mind
ENGL	Introduction to World Literature Independent Study	PSYC	Psychology in Film Stress, Coping and the Self-Concept
		R ST	Women and Religion

Enrollment in Honors Courses

Fall 2010	Fall 2011	Fall 2012	Fall 2013	Fall 2014
138	83	85	98	143

Retention and Graduation Rates for First-Time Full-Time Freshmen by Year of Entry - Fall 2003 to Fall 2014

Source: Maryland University Office of Planning and Institutional Effectiveness

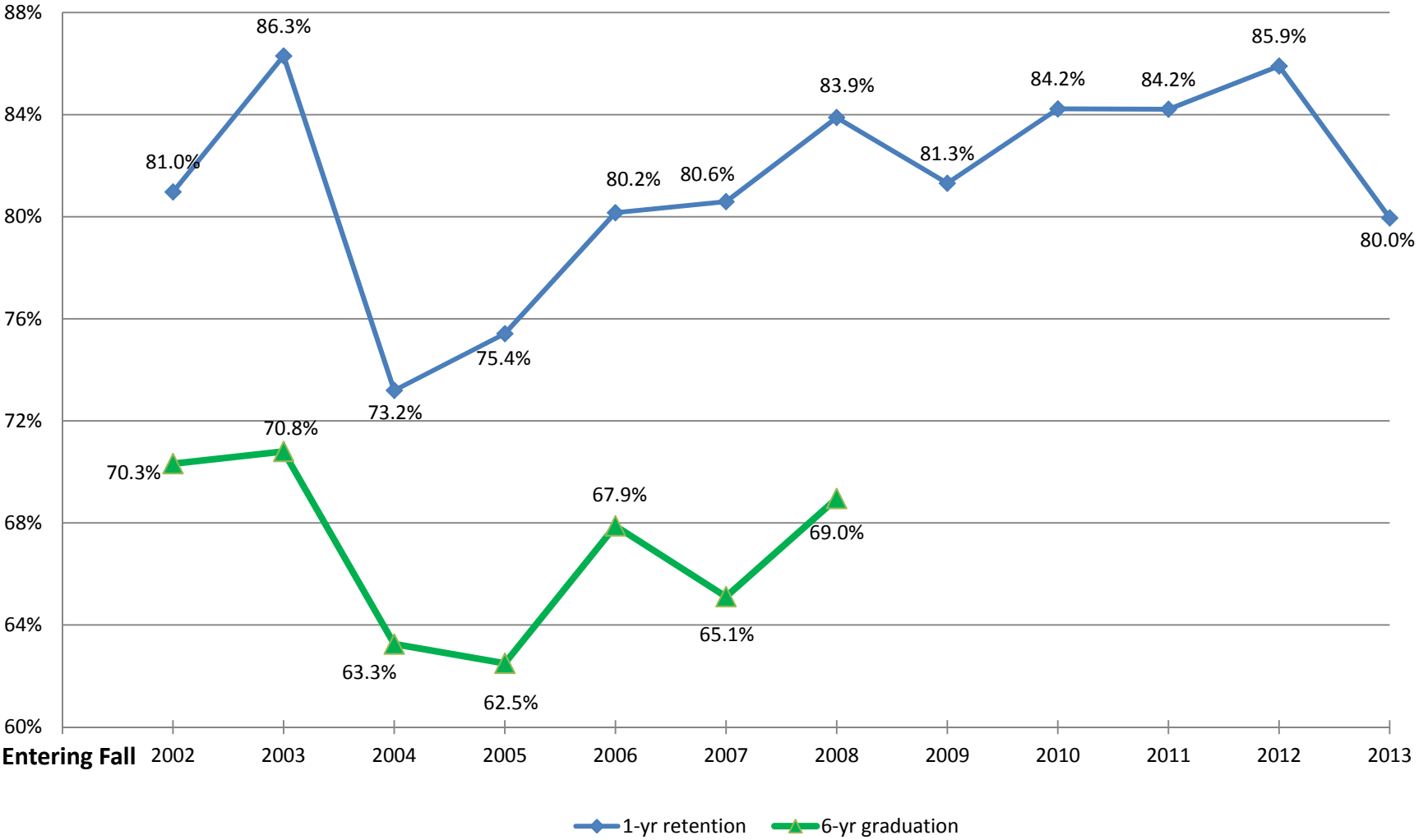
Factbook

Entering Fall Term	Retention Rates									Graduation Rates				
	1st Fall	2nd Fall	3rd Fall	4th Fall	5th Fall	6th Fall	7th Fall	8th Fall	9th Fall	within 4 yrs	within 5 yrs	within 6 yrs	within 7 yrs	within 8 yrs
2003* N	277	239	210	203	45	6	0	0	0	152	188	196	199	200
%	100%	86.3%	75.8%	73.3%	16.2%	2.2%	0.0%	0.0%	0.0%	54.9%	67.9%	70.8%	71.8%	72.2%
2004 N	332	243	221	216	61	11	2	2	1	149	200	210	211	213
%	100%	73.2%	66.6%	65.1%	18.4%	3.3%	0.6%	0.6%	0.3%	44.9%	60.2%	63.3%	63.6%	64.2%
2005* N	301	227	201	193	33	3	0	0	0	153	184	188	190	190
%	100%	75.4%	66.8%	64.1%	11.0%	1.0%	0.0%	0.0%	0.0%	50.8%	61.1%	62.5%	63.1%	63.1%
2006* N	383	307	285	270	67	9	5	3	1	197	254	260	265	268
%	100%	80.2%	74.4%	70.5%	17.5%	2.3%	1.3%	0.8%	0.3%	51.4%	66.3%	67.9%	69.2%	70.0%
2007* N	407	328	283	274	48	5	4	2		218	261	265	267	
%	100%	80.6%	69.5%	67.3%	11.8%	1.2%	1.0%	0.5%		53.6%	64.1%	65.1%	65.6%	
2008 N	422	354	306	296	51	6	1			238	284	291		
%	100%	83.9%	72.5%	70.1%	12.1%	1.4%	0.2%			56.4%	67.3%	69.0%		
2009* N	412	335	296	295	60	5				232	284			
%	100%	81.3%	72.3%	71.6%	14.6%	1.2%				56.3%	68.9%			
2010* N	450	379	348	311	62					243				
%	100%	84.2%	77.3%	69.1%	13.8%					54.0%				
2011 N	456	384	336	313						4				
%	100%	84.2%	73.7%	68.6%						0.9%				
2012 N	454	368	332											
%	100%	81.1%	73.1%											
2013* N	403	323												
%	100%	80.1%												
2014 N	368													
%	100%													

NOTE: Average 6-year graduation rate computed by Student Right to Know (SRK) formula for 4-year programs is 66.4%

*Student(s) removed from cohort

Trends in 1-Year Retention and 6-year Graduation Rates of First-time Full-time Students Fall 2002 to Fall 2013 Cohorts



ATHLETICS AND RECREATION

Intercollegiate teams are sponsored in nineteen sports with the intention to add our twentieth in 2015-16. The university is a member of the National Collegiate Athletic Association (NCAA) Division III, the Colonial States Athletic Conference (CSAC), the Eastern College Athletic Conference (ECAC) and the Landmark Conference. Ten sports are offered for women and nine for men:

Women	Men
Basketball	Baseball
Cross Country	Basketball
Field Hockey	Cross Country
Lacrosse	Golf
Soccer	Lacrosse
Softball	Soccer
Swimming/Diving	Swimming/Diving
Tennis	Tennis
Track and Field (Outdoor)	Track and Field (Outdoor)
Women's Golf*	
Volleyball	

*As of fall 2015

A selection of intramural and club sports also is available. Club sports have included: climbing, dance team, cheerleading and men's volleyball among others. A wide range of activities are offered through the intramural sports program. Traditional team activities such as basketball, volleyball, flag football, tennis and softball are available in addition to innovative programs like ultimate Frisbee and kickboard water polo. Recreation programs include land and water aerobics classes and fitness challenges.

The Center for Athletics and Wellness is a state-of-the-art facility with a fitness center, climbing wall, an elevated running track, a dance/aerobics studio, a 1500 seat arena and high tech athletic training areas. The Aquatics Center features eight lanes, one meter and three meter diving boards, spectator seating and team rooms. The major expansion of the university's athletics and recreation facilities within the last decade was designed to complement the outdoor facilities that include a lighted multipurpose turf field, tennis courts, sand volleyball court, basketball courts and three grass fields.

Athletic Honors/Achievements (2004-2014) - Team

		All Conference Team Members	
ECAC South Region Championship	1		
CSAC Overall President's Cup	1	First Team	340
CSAC Men's President's Cup	1	Second Team	304
CSAC Women's Presidents Cup	3	Honorable Mention	180
Team Conference Championships	33	All Sportsmanship Team	144
Team Conference Runners-up	34		
Conference Coach of the Year	44		

Athletic Honors/Achievements (2002-2014) – Individual*

Women's Soccer Conference Player of the Year	2002, 2008, 2009, 2012
Men's Soccer Rookie of the Year	2010, 2012
Women's Cross Country Conference Individual Champion	2004, 2006, 2010, 2012, 2013, 2014
Men's Tennis Conference Player of the Year	2008, 2012
Women's Lacrosse Player of the Year	2012
Women's Tennis Rookie of the Year	2011, 2012
Men's Soccer Player of the Year	2011, 2012
Women's Soccer Rookie of the Year	2009
Women's Lacrosse Rookie of the Year	2009
Field Hockey Rookie of the Year	2014
Women's Tennis Player of the Year	2014
ECAC Men's Soccer Player of the Year	2012

*As of fall 2014

II. PERSONNEL

Employees by Ethnicity, EEO Category and Time Status

EEO-6 CATEGORY		10-11	11-12	12-13	13-14	14-15
<u>Executive/Administrative/Managerial</u>						
Full-Time	White	46	44	46	44	45
	Other	0	3	2	1	1
Part-Time	White	0	0	0	1	1
	Other					
<u>Faculty (instructional only)</u>						
Full-Time	White	137.25	132	142	145	146
	Other	14	21	15	13	17
Part-Time	White	237	231	265	253	239
	Other	11	57	20	20	17
<u>Professional (includes librarians)</u>						
Full-Time	White	114.5	108	122	124	120
	Other	8	9	5	6	7
Part-Time	White	36	27	28	35	31
	Other	2	3	6	5	0
<u>Secretarial/Clerical</u>						
Full-Time	White	97	103	98	94	91
	Other	2	1	1	1	1
Part-Time	White	26	18	19	20	14
	Other	3	5	2	1	2
<u>Technical/Paraprofessional</u>						
Full-Time	White	18	20	22	21	20
	Other	1	1	0	1	1
Part-Time	White	5	5	2	4	4
	Other					
<u>Skilled Craft</u>						
Full-Time	White	20	22	21	21	20
	Other					
<u>Service/Maintenance</u>						
Full-Time	White	79	81	85	85	85
	Other	1	4	1	2	3
Part-Time	White	16	8	10	9	11
	Other	1	2	1	1	1
Total						
Full-Time	White	511.75	510	536	534	527
	Other	26	39	24	21	30
Part-Time	White	320	289	324	322	300
	Other	17	67	29	21	20

Full-time Employees by Gender and Ethnicity

EEO-6 CATEGORY	10-11		11-12		12-13		13-14		14-15	
	M	F	M	F	M	F	M	F	M	F
<u>Executive/Administrative/Managerial</u>										
White	22	24	20	24	21	25	19	25	16	29
Black	0	0	0	1	0	1	0	1	0	1
Other	0	0	1	1	1	0	0	0	0	0
<u>Faculty (instructional only)</u>										
White	57	80.25	63	69	61	81	63	81	62	84
Black	2	1	1	1	1	1	2	1	1	1
Hispanic	1	2	1	2	1	2	2	0	1	0
Asian/Pacific Islander	5	3	6	3	5	4	4	5	5	4
Other	0	0	2	5	1	0	0	1	4	1
<u>Professional (includes librarians)</u>										
White	31	83.5	31	77	37	85	38	86	38	82
Black	1	1	0	1	0	1	0	1	0	1
Hispanic	0	1	0	1	0	1	0	1	0	1
Asian/Pacific Islander	1	4	1	2	1	2	1	2	2	2
Other	0	0	2	2	0	0	1	0	1	0
<u>Secretarial/Clerical</u>										
White	4	93	3	100	3	95	4	90	4	87
Black	0	2	0	0	0	0	0	0	0	0
Other	0	0	0	1	0	1	0	1	0	0
<u>Technical/Paraprofessional</u>										
White	10	8	12	8	14	8	13	8	11	9
Hispanic	0	1	0	1	0	0	0	0	0	1
<u>Skilled Craft</u>										
White	20	0	22	0	21	0	21	0	20	0
<u>Service/Maintenance</u>										
White	38	41	39	42	40	45	38	47	39	46
Black	1	0	0	1	0	1	0	0	0	0
Other	0	0	2	1	0	0	1	1	1	2
Total										
White	182	329.75	190	320	197	339	196	337	190	337
Black	4	4	1	4	1	4	2	3	2	3
Hispanic	1	4	1	4	1	3	2	1	1	2
Asian/Pacific Islander	6	7	7	5	6	6	5	8	7	6
Other	0	0	7	10	2	1	2	3	6	3
	193	344.75	206	343	207	353	207	352	206	351

Number of Full-time and Pro-rata Faculty by College¹⁹

	2010	2011	2012	2013	2014
Reap College of Education and Human Development					
Full-time	29	32	32	36	34
Pro-rata	2	1	1	0	0
FTE	30	32.75	32.75	36.0	34.0
Insalaco College of Creative and Performing Arts					
Full-time	25	26	28	27	27
Pro-rata	5	6	5	8	8
FTE	27.5	29	30.5	31.0	31.0
College of Health and Human Services					
Full-time	37	40	39	35	37
Pro-rata	5	8	7	7	5
FTE	39.5	44	42.5	39.5	39.5
Munley College of Liberal Arts and Sciences					
Full-time	46	49	50	51	54
Pro-rata	6	4	4	7	3
FTE	49	51	52	54.5	55.5
School of Architecture					
Full-time	5	6	8	10	11
Pro-rata	0	0	1	1	1
FTE	5	6	8.5	10.5	11.5
Librarians					
Full-time	7	5	8	8	8
Pro-rata	1	0	0	0	0
FTE	7.5	5	8	8	8
TOTAL					
Full-time	149	158	165	167	171
Pro-rata	19	19	18	23	17
FTE	158.5	167.75	174.25	178.5	179.5
Student/Faculty Ratio	14:1	13:1	13:1	13:1	11:1

Tenure Status Among Full-time Faculty

	2010		2011		2012		2013		2014	
	N	%	N	%	N	%	N	%	N	%
Professor	22	100.0	23	100.0	23	100.0	22	95.7	21	95.5
Assoc Professor	28	68.3	34	75.6	35	72.9	39	76.5	43	81.1
Asst Professor	6	9.1	5	6.8	4	4.9	4	5.3	4	5.2
Instructor	0	0.0	0	0.0	0	0.0	0	0.0	0	0.0
Total University	56	37.3	62	40.0	62	37.6	65	40.1	68	39.8

¹⁹ Center for Interdisciplinary Studies: Faculty from other colleges teach CIS courses.

Number of Full-time Faculty by Rank and Gender

	<u>2010</u>	<u>2011</u>	<u>2012</u>	<u>2013</u>	<u>2014</u>
Professor					
Male	12	13	11	13	13
Female	10	10	12	10	9
Total	22	23	23	23	22 (12.87%)
Associate Prof.					
Male	17	19	22	23	24
Female	23	26	26	27	29
Total	40	45	48	50	53 (30.99%)
Assistant Prof.					
Male	34	42	38	35	35
Female	31	35	43	40	42
Total	65	77	81	75	77 (45.03%)
Instructor					
Male	2	0	0	1	2
Female	12	2	3	2	2
Total	14	2	3	3	4 (2.34%)
Clinical Instructor					
Male	0	0	0	1	1
Female	8	11	10	15	14
Total	8	11	10	16	15 (8.77%)
Total Full-time	149	158	165	167	171

Number of Full-time Faculty with Terminal Degrees

	2010		2011		2012		2013		2014	
	<u>N</u>	<u>%</u>	<u>N</u>	<u>%</u>	<u>N</u>	<u>%</u>	<u>N</u>	<u>%</u>	<u>N</u>	<u>%</u>
Doctorate	100	67.1	121	76.6	119	72.1	116	69.0	114	66.7
MSLS/MLIS	7	4.7	5	3.2	8	4.9	8	4.8	8	4.7
MFA/MPhys Asst/ MArch	15	10.1	17	10.8	21	12.7	22	13.1	25	14.6
JD/MD/AuD	1	0.7	0	0.0	0	0.0	2	1.2	2	1.2
Total University	123	82.6	143	90.5	148	89.7	148	88.1	149	87.1

III. FINANCES

Unrestricted Operating Revenues

	FY 11-12	FY 12-13	FY 13-14
Tuition and fees:			
Tuition:			
Undergraduate School - On Campus	\$57,630,432	\$60,066,496	\$55,928,585
Undergraduate - OCDP	34,009	100,750	-
Graduate School of Arts & Sciences	11,100,886	12,714,920	10,745,671
Graduate School of Social Work	4,533,660	2,469,025	3,817,689
Total Tuition	<u>73,298,987</u>	<u>75,351,191</u>	<u>70,491,945</u>
Less Scholarship Allowances	-30,911,661	-32,144,966	-30,526,139
Net Tuition	<u>\$42,387,326</u>	<u>\$43,206,225</u>	<u>39,965,806</u>
Fees:			
Registration and Application	85,870	95,016	97,759
General	2,521,163	2,813,770	2,640,981
Music Lessons	147,169	6,050	101,737
Student Teaching	11,550	3,210	12,664
Graduation	212,000	199,900	216,638
Orientation	148,651	178,962	132,939
Student Activities Fees	457,991	547,938	520,041
Non-credit Offerings	470,976	495,686	639,609
Miscellaneous	1,258,852	1,426,681	1,161,796
Total Fees	<u>\$5,314,222</u>	<u>\$5,767,213</u>	<u>\$5,524,164</u>
Total Tuition and Fees (Net)	<u>\$47,701,548</u>	<u>\$48,973,438</u>	<u>\$45,489,970</u>
Federal Grants and Contracts	\$864,905	\$775,529	\$651,778
State Grants and Contracts	795,567	919,471	804,443
Private Gifts and Grants	1,225,586	1,130,483	2,887,614
Income on Long-Term Investments	5,274	7,333	8,163
Other Investment Income	158,012	30,306	13,026
Net Realized Gains on Long-Term Investments	574,003	285,833	1,171,871
Sales and Services of Educational Activities	322,140	294,240	258,440
Contributed Services, Net	-	-	-
Other Sources	868,569	857,529	879,452
	<u>\$4,814,056</u>	<u>\$4,300,724</u>	<u>\$6,674,787</u>
Sales and Services of Auxiliary Enterprises:			
Food Service	\$5,852,886	\$5,617,799	\$5,475,065
Resident Halls	7,957,875	7,731,313	7,663,428
Bookstore	209,977	75,555 ²⁰	63,870
Fricchione Day Care Center	542,750	598,548	581,104
Total Sales and Services of Auxiliary Enterprises	<u>\$14,563,488</u>	<u>\$14,023,215</u>	<u>\$13,783,467</u>
Total Net Assets Released From Restrictions	3,134,955	4,545,621	3,029,942
Total Current Revenues	<u>\$70,214,047</u>	<u>\$71,842,998</u>	<u>\$68,978,166</u>

²⁰ The bookstore became an independent operation in fiscal year 2012-13.

Percent Distribution of Unrestricted Operating Revenues

	FY 11-12 % of Total	FY 12-13 % of Total	FY 13-14 % of Total
Tuition and fees:			
Tuition:			
Undergraduate School - On Campus	82.1	83.6	81.1
Undergraduate - OCDP	0.0	0.1	0.0
Graduate School of Arts & Sciences	15.8	17.7	15.6
Graduate School of Social Work	6.5	3.4	5.5
Total Tuition	104.4	104.9	102.2
Less Scholarship Allowances	-44.0	-44.7	-44.3
Net Tuition	60.4	60.1	57.9
Fees:			
Registration and application	0.1	0.1	0.1
General	3.6	3.9	3.8
Music lessons	0.2	0.0	0.1
Student teaching	0.0	0.0	0.0
Graduation	0.3	0.3	0.3
Orientation	0.2	0.2	0.2
Student Activities Fees	0.7	0.8	0.8
Non-credit offerings	0.7	0.7	0.9
Miscellaneous	1.8	2.0	1.7
Total Fees	7.6	8.0	8.0
Total Tuition and Fees (Net)	67.9	68.2	65.9
Federal Grants and Contracts	1.2	1.1	0.9
State Grants and Contracts	1.1	1.3	1.2
Private Gifts and Grants	1.7	1.6	4.2
Income on Long-Term Investments	0.0	0.0	0.0
Other Investment Income	0.2	0.0	0.0
Net Unrealized and Realized Gains on Long-Term Investments	0.8	0.4	1.7
Sales and Services of Educational Activities	0.5	0.4	0.4
Contributed Services, Net	0.0	0.0	0.0
Other Sources	1.2	1.2	1.3
	6.9	6.0	9.7
Sales and Services of Auxiliary Enterprises:			
Food service	8.3	7.8	7.9
Resident halls	11.3	10.8	11.1
Bookstore	0.3	0.1	0.1
Fricchione Day Care Center	0.8	0.8	0.8
Total Sales and Services of Auxiliary Enterprises	20.7	19.5	20.0
Total Net Assets Released From Restrictions	4.5	6.3	4.4
Total Current Revenues	100.0	100.0	100.00

Unrestricted Operating Expenditures

	FY 11-12	FY 12-13	FY 13-14
Educational and General:			
Instruction	\$27,108,806	\$27,705,032	\$28,764,023
Research	335,075	344,749	287,126
Academic Support	6,609,601	6,370,506	8,306,018
Student Services	10,142,741	10,262,375	10,824,497
Institutional Support	13,611,540	14,376,542	15,176,963
Student Aid	471,228	532,056	551,518
Educational and General Expenditures	\$58,278,991	\$59,591,260	\$63,910,145
Auxiliary Enterprises	10,438,214	10,500,351	10,121,573
Total Expenditures	\$68,717,205	\$70,091,611	\$74,031,718

Percent Distribution of Unrestricted Operating Expenditures

	FY 11-12 % of Total	FY 12-13 % of Total	FY 13-14 % of Total
Educational and General:			
Instruction	39.4	39.5	38.9
Research	0.5	0.5	0.4
Academic Support	9.6	9.1	11.2
Student Services	14.8	14.6	14.6
Institutional Support	19.8	20.5	20.5
Student Aid	0.7	0.8	0.7
Educational and General Expenditures	84.8	85.0	86.3
Auxiliary Enterprises	15.2	15.0	13.7
Total Expenditures	100.0	100.0	100.0

**Externally Sponsored Research
as a Percentage of
Unrestricted Operating Expenditures**

	<u>FY 11-12</u>	<u>FY 12-13</u>	<u>FY 13-14</u>
Total Unrestricted Operating Expenditures	\$68,717,205	\$70,091,611	\$74,031,718
Externally Sponsored Research Expenditures	\$471,228	\$532,056	\$551,518
Research Support as Percent of Total	0.69%	0.76%	0.74%

Endowment, Quasi-Endowment and Other Long-Term Investments

	<u>2011-12</u>	<u>2012-13</u>	<u>2013-14</u>
Endowment and Similar Funds:			
Quasi-Endowment, income designated for Graduate School of Arts and Sciences	\$465,451	\$465,451	\$465,451
Quasi-Endowment, income designated for scholarship aid	514,097	522,002	528,932
Quasi-Endowment, income not designated	23,282,240	21,491,366	14,195,941
Total Quasi-Endowment	<u>\$24,261,788</u>	<u>\$22,478,819</u>	<u>15,190,324</u>
Life Income Trust	18,779	18,175	18,476
Endowment	<u>18,423,008</u>	<u>19,531,461</u>	<u>20,622,359</u>
Total Endowment and Similar Funds	\$42,703,575	\$42,028,455	\$35,831,159
Other Long-Term Investments:			
Beneficial Interest in Perpetual Trusts	952,698	997,193	1,084,876
For matching funds under Federal Student Loan Program	338,405	419,411	490,917
Other	<u>534,227</u>	<u>545,738</u>	<u>546,658</u>
Total Other Long-Term Investments	<u>\$1,825,330</u>	<u>\$1,962,342</u>	<u>\$2,122,451</u>
Total Long-Term Investments	<u>\$44,528,905</u>	<u>\$43,990,797</u>	<u>\$37,953,610</u>

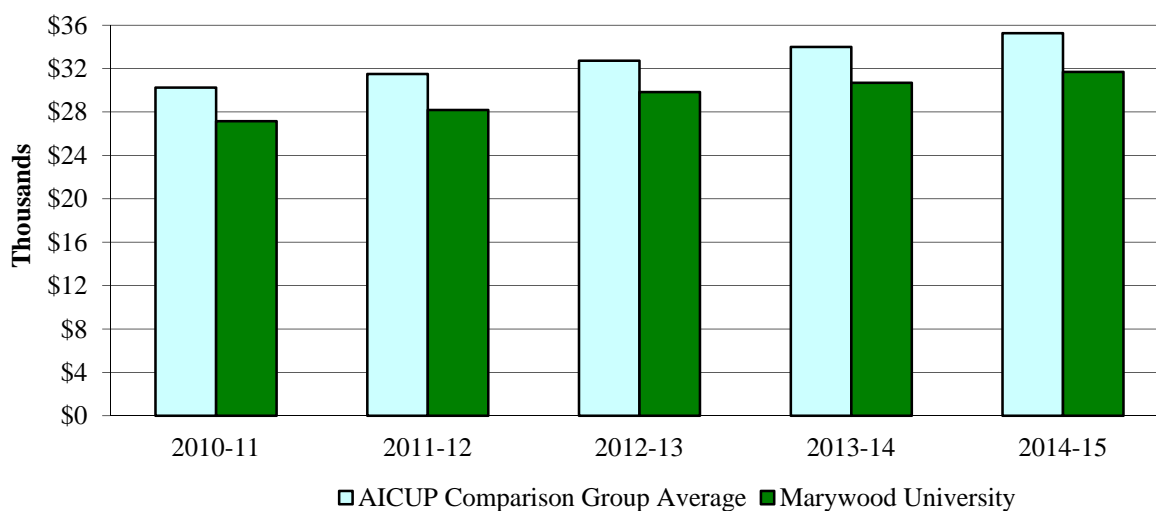
Tuition, Fees, Room and Board Charges

	<u>FY 10-11</u>	<u>FY 11-12</u>	<u>FY 12-13</u>	<u>FY 13-14</u>	<u>FY 14-15</u>
<u>Tuition Rates Per Credit</u>					
<i>Undergraduate</i>	\$590	\$600	\$630	\$630	\$630
<i>Distance Learning</i>	470	478	500	500	-
<i>Masters Level</i>	735	750	775	775	775
<i>Master of Fine Arts</i>	735	750	775	775	775
<i>Master of Social Work</i>	735	750	775	775	775
<i>Master of Public Administration</i>	735	750	775	775	775
<i>Master of Social Work (off-campus)</i>	735	750	775	775	725
<i>Master of Social Work (Bloomsburg Program)</i>	590	600	630	630	725
<i>Doctoral Level</i>	830	840	870	870	875
<i>Ph.D. (Hershey)</i>	860	870	870	870	875
<u>General Fee Per Year</u>					
<i>Full-Time</i>	\$950	\$975	\$1,050	\$1,100	\$1,375
<i>Part-Time</i>	400	425	500	550	688
<u>Student Activities Fee Per Year</u>					
<i>UG - Full-Time</i>	\$200	\$200	\$250	\$250	\$250
<i>UG - Part-Time</i>	100	100	150	150	150
<i>GR – Full- & Part-Time</i>	40	40	40	40	40
<u>Registration Fee Per Year</u>					
	\$100	\$100	\$100	\$100	\$100
<u>Room & Meals Per Year</u>					
<i>Double Room and 24 Meals/Week-\$100 PP</i>	\$12,172	\$12,520	\$12,920	\$13,566	13,900
<i>Double Room and 19 Meals/Week-\$200 PP</i>	12,172	12,520	12,920	13,566	13,900
<i>Double Room and 15 Meals/Week-\$300 PP</i>	12,172	12,520	12,920	13,566	13,900
<i>Double Room and 185 Block Plan-\$100 PP</i>	11,934	12,270	12,650	13,282	13,611
<i>Double Room and 150 Block Plan-\$100 PP</i>	11,238	11,550	11,670	12,254	12,558
<i>Single Room Fee (additional charge)</i>	1,552	1,584	1,630	1,710	1,756
<u>Other Major Fees</u>					
<i>New Student Matriculation Fee</i>	\$225	\$225	\$225	\$250	\$250
<i>Graduation Fee</i>	225	225	225	250	250
<i>Music Lessons (per half hour per credit charge in addition to tuition)</i>	395	395	395	395	395
<u>Undergraduate Cost of Attendance</u>					
<i>Tuition for Full-Time Students</i>	\$26,000	\$27,000	\$28,080	\$29,340	\$30,070
<i>Room & Meals (19 meals)</i>	12,172	12,520	12,920	13,566	13,900
<i>General Fee</i>	950	975	1,050	1,100	1,375
<i>Student Activities Fee</i>	200	200	250	250	250
Total Cost Per Year	\$39,322	\$40,695	\$42,300	\$44,256	\$45,595

**Total Cost for Tuition & Required Fees and Room and Board
Marywood University and AICUP Peer Institutions**

	2012-13 \$	2013-14 \$	2014-15 \$	most recent increase %
<u>Tuition and Fees</u>				
Marywood University	29,830	30,690	31,695	3.3
Arcadia University	35,620	36,810	38,160	3.7
Gannon University	26,526	27,546	28,368	3.0
Immaculata University	29,000	30,740	32,000	4.1
King's College	29,174	30,310	31,816	5.0
La Roche College	24,058	24,778	25,500	2.9
La Salle University	36,550	38,100	39,700	4.2
Misericordia University	27,230	28,210	29,010	2.8
St. Francis University	28,878	29,992	31,078	3.6
St. Joseph's University	37,830	39,040	40,580	3.9
Susquehanna University	37,280	38,780	40,350	4.0
University of Scranton	37,456	38,754	39,956	3.1
Villanova University	42,740	44,430	45,966	3.5
Widener University	36,382	38,028	39,830	4.7
Wilkes University	29,326	30,350	31,262	3.0
<u>Room & Board</u>				
Marywood University	12,920	13,566	13,900	2.5
Arcadia University	12,150	12,560	12,740	1.4
Gannon University	10,580	10,940	11,240	2.7
Immaculata University	11,740	12,260	12,880	5.1
King's College	11,020	11,368	11,658	2.6
La Roche College	9,732	10,024	10,324	3.0
La Salle University	12,510	13,420	13,940	3.9
Misericordia University	11,190	11,630	12,050	3.6
St. Francis University	9,900	10,346	10,760	4.0
St. Joseph's University	12,800	13,232	14,513	9.7
Susquehanna University	10,000	10,390	10,800	3.9
University of Scranton	12,804	13,186	13,566	2.9
Villanova University	11,393	11,856	12,278	3.6
Widener University	12,248	12,340	12,588	2.0
Wilkes University	12,034	12,436	12,808	3.0

Tuition and Fees: AICUP Comparison Group Average v. Marywood University



Student Financial Aid

Funding Source	FY 09-10	FY 10-11	FY 11-12	FY 12-13	FY 13-14
Institutional Aid					
Marywood University	\$26,318,023	\$28,811,004	\$30,758,668	\$32,152,485	\$30,001,974
Endowments	50,380	38,650	35,250	30,435	19,984
Institutional Aid	\$26,368,403	\$28,849,654	\$30,793,918	\$32,182,920	\$30,021,958
Federal, State, and Private Aid					
Federal	\$3,736,795	\$3,990,402	\$3,725,685	\$3,591,596	\$3,449,362
State	2,525,943	2,511,828	2,922,519	2,994,050	2,757,198
Private	129,137	74,280	84,275	100,890	73,089
Federal, State and Private Aid	\$6,391,875	\$6,576,510	\$6,732,479	\$6,686,536	\$6,279,649
Grand Total	\$32,760,278	\$35,426,164	\$37,526,397	\$38,869,456	\$36,301,607

For comparability, Pell and PHEAA grants (listed below) are included in the above federal and state sources, respectively. These amounts are excluded from the audited financial statements.

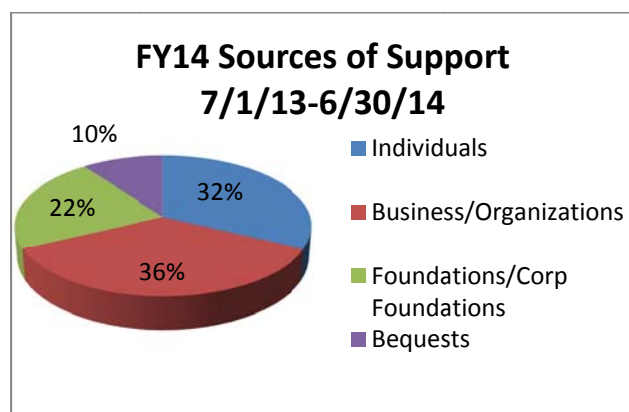
Pell Grants	\$2,995,400	\$3,290,094	\$3,230,090	\$3,053,903	\$3,054,047
PHEAA Grants	\$2,806,468	\$2,480,826	\$2,913,418	\$2,964,062	\$2,721,421

Total Gifts and Grants Purposes of Support

Purposes of Support	FY '10 <u>Amount</u>	FY '11 <u>Amount</u>	FY '12 <u>Amount</u>	FY '13 <u>Amount</u>	FY '14 <u>Amount</u>
1. Current Operations					
a. Unrestricted	194,522	204,207	252,489	207,777	484,005
b. Restricted	<u>1,407,394</u>	<u>1,260,079</u>	<u>931,918</u>	<u>4,017,978</u>	<u>803,378</u>
<i>Sub-total, Current Operations</i>	<i>1,601,916</i>	<i>1,464,286</i>	<i>1,184,407</i>	<i>4,225,755</i>	<i>1,287,383</i>
2. Endowment	1,312,918	1,540,345	919,700	899,282	770,127
3. Capital	<u>474,496</u>	<u>640,982</u>	<u>993,126</u>	<u>976,413</u>	<u>2,093,631</u>
Total	\$3,389,330	\$3,645,613	\$3,097,233	\$6,101,450	\$4,151,441

Donor Giving Levels

Giving Levels	FY '10 <u># of Donors</u>	FY '11 <u># of Donors</u>	FY '12 <u># of Donors</u>	FY '13 <u># of Donors</u>	FY '14 <u># of Donors</u>
\$10,000 and greater	38	43	38	54	66
\$5,000-\$9,999	33	24	27	28	64
\$2,000-\$4,999	71	79	98	91	94
\$1,000-\$1,999	139	105	94	78	122
\$500-\$999	151	162	117	142	181
\$250-\$499	257	254	225	206	239
\$100-\$249	1,062	1,091	920	1,054	1,013
\$1-\$99	2,300	2,403	2,215	2,045	1,951



Undergraduate Alumni Giving*

Fiscal Year	Number of Donors	% Participation
2014	2,621	14.0

*Based on gifts received.

Office of Research and Sponsored Programs

Academic Affairs Research and Program Grants and Contracts (Public and Private Funds)

Fiscal Year

2008-09	\$2,218,130	2011-12	\$1,596,452
2009-10	\$1,333,016	2012-13	\$1,784,308
2010-11	\$1,457,680	2013-14	\$2,719,472

IV. FACILITIES

Land and Building Inventory

Land (In Acres):

	<u>June 30, 2010</u>	<u>June 30, 2011</u>	<u>June 30, 2012</u>	<u>June 30, 2013</u>	<u>June 30, 2014</u>
Land in Scranton, PA	70.3	71.3	71.3	71.3	71.3
Land in Dunmore, PA	43.4	51.4	51.4	51.4	51.4
Total	113.7	122.7	122.7	122.7	122.7

Buildings:

<u>Building</u>	<u>Predominant Function</u>	<u>Usable Square Footage</u>
Adams Avenue Property (#2205)	President's Residence	5,555
Adams Avenue Property (#2305)	Administrative	2,924
Adams Avenue Property (#2349)	Student Life Residence	2,857
Bethany Hall and Garage	Student Residence	4,966
Center for Architectural Studies	Academic	25,424
Center for Athletics and Wellness	Academic/Athletics/Recreation	80,170
Center for Natural and Health Sciences	Academic	45,453
Domiano Early Childhood Center	Special	2,810
Emmanuel Hall	Student Residence	8,359
Fricchione Day Care Center	Special	8,397
Immaculata Hall	Administration/Student Residence	31,994
Insalaco Center for Studio Arts	Academic	56,020
Keith J. O'Neill Center for Healthy Families	Academic/Special	24,820
Learning Resources Center	Library	66,169
Liberal Arts Center	Academic/Administrative	70,251
Loughran Hall	Student Residence/Administrative	109,247
Madonna Hall	Student Residence	51,674
Maria Hall	Administrative	5,017
McCarty Hall	Student Residence	4,921
McGowan Center for Graduate and Professional Studies	Academic	55,252
North Washington Avenue Property (#2501)	Residence	3,421
Perpetual Help Hall	Student Residence	3,574
Power Plant and Maintenance Building	Support	19,924
Printing and Mailing Center	Support	3,674
Regina Hall	Student Residence/Administrative	56,907
Sette La Verghetta Center for Performing Arts	Academic	39,769
Shields Visual Arts Center	Academic	56,707
South Campus	Academic/Administrative	142,666
Student Center (Nazareth Hall)	Campus Life	55,942
Washington Avenue Property (#2400)	IHM Residence	3,182
Woodland Residences I	Student Residences	10,442
Woodland Residences II	Student Residences	27,463
Woodland Residences III	Student Residences	14,617
Total Square Footage		1,100,568
Net Book Value of Buildings (historical cost less accumulated depreciation)		\$133,729,373
Cost of Replacement		\$239,479,320

Leased facilities:

DeSales University - School of Social Work

University Library

	<u>2011-12</u>	<u>2012-13</u>	<u>2013-14</u>
<u>Resources</u>			
<i>Print Collection</i>			
Books and Bound Periodicals	204,708	195,420	257,584
Books Added	1,870	1,944	2,162
Print Journal Titles	77	107	97
Distinct Journal Titles (Electronic and Print)	34,057	35,169	40,423
Microfiche	364,677	0	0
Reels of Microfilm	13,582	0	0
<i>Media Collection</i>			
Art Prints	337	337	337
Audiotapes	0	0	0
Compact Discs	7,476	7,795	8,085
Computer Software	16	16	16
DVDs	4,262	4,335	4,497
Records	5,216	5,414	5,414
Slides	10,268	10,268	10,268
Sound Slidesets	14	14	14
Study Prints	418	418	418
Videorecordings	6,572	6,572	6,572
<i>Electronic Resources</i>			
Internet Databases	52	57	57
Full-Text Databases	48	46	46
<u>Expenditures</u>			
Books and Periodicals	\$219,591	\$231,210	\$216,675
Electronic Resources	103,334	111,354	147,988
Bindings	5,437	4,472	6,207
Non-Print Media	4,970	2,600	2,900
Supplies	9,937	4,615	3,187
<i>Interlibrary Loan</i>			
Borrowed	3,856	5,165	4,681
Loaned	4,329	4,532	4,979
<i>Staff</i>			
Professionals	8.0	8.0	8.0
Clerical	12.7	9.5	9.5
Student Assistants	23	20	20
Circulation – Total	21,452	18,905	13,584
Hours of Service/Week	98.5	98.5	98.5
Reference Transactions in a Typical Week	73	68	64
Gate Count in a Typical Week	4,489	N/A	N/A
No. of Presentations, Workshops, Etc.	170	156	111
No. of Students, Faculty Attending	2,702	2,079	1,586

Office of Information Technology

The Office of Information Technology (OIT) is responsible for providing technology and related support to the Marywood University campus. This central organization of all IT resources on campus is made up of five divisions: User Support Services, Application Services, Network & Systems Administration Services, Web Development, and Enterprise Resources.

User Support Services

User Support Services provides Help Desk, Academic Computing and Training support. The Help Desk provides first level hardware, software, and network support to faculty, staff and students. A public walk-up window is housed on the main floor of the Library.

Academic computing staff assist faculty in the use of information technology for the creation, organization, analysis, and presentation of scholarly, scientific, and curricular resources. In courses using our learning management system (Moodle), syllabi, course information, chat, assignment, and test capabilities are all available online.

One-on-one and group training is conducted by various User Support staff members on applications such as Microsoft Office, Google Apps, SPSS, Moodle, and other specialized packages such as Colleague and the MarywoodYOU Portal.

User Support also employs a lab supervisor and student work study lab assistants who troubleshoot basic problems and maintain the computer labs located throughout campus.

Application Programming Services

Application Programming Services supports administrators and staff in management and student services, and gives ongoing technical support for effective data and process operations. This includes programming for the Colleague ERP system and auxiliary systems, customized report services and analytics and database operations and maintenance.

Network and System Administration

Marywood University is committed to providing high quality technology for its students, faculty and staff. The Marywood data infrastructure began in 1987 and continues to grow with added fiber optic backbone, VOIP, data and CATV wiring, desktop and laptop computers, and mobile devices. The fiber backbone connects all major classroom, administrative buildings, and residence halls. Buildings are wired for telephony, data and video. Over 270 wireless access points are located through all campus buildings, including residence halls. The University has two divergent connections to the Internet providing over 600M of bandwidth.

Web Development

The Web Team comprises all of the pieces that make the webpage possible, from policy, to design, to implementation. They are responsible for the organization and maintenance of the website and have an array of skills, such as programming, graphic design, photography, and videography that helps make department pages functional and unique.

Enterprise Resources

The Enterprise Resources Office ensures the Ellucian ERP system and related technologies serve internal and external users, maintain and execute a structured enhancement plan, continually improve processes and provide access to timely and accurate reporting to aid in tactical and strategic planning.

Computer Labs

The Office of Information Technology maintains computer labs and drop-in areas in various buildings on campus. A 24/7 computing facility is located in our largest dormitory, Loughran Hall. Most labs are Windows-based PCs with Macintosh computers in buildings housing graphic arts or education. All have a high-speed Internet connection, scanners, pay per page laser printing, and Microsoft Office, as well as a number of specialized programs as needed by various departments.

Peer-to-Peer Policy Statement

Marywood University prohibits Peer to Peer (P2P) network traffic from the campus network because of its widespread use in distributing illegal or copyrighted material. The Office of Information Technology reserves the right to remove any computer in question from the network entirely if it is found to be distributing or collecting illegal or copyrighted material, or using excessive amounts of network bandwidth to the detriment of other computers on the network.

Definitions

On the Internet, P2P is a type of transient Internet network that allows a group of computer users with the same networking program to connect with each other and directly access files from one another's hard drives. The files can include music, videos, photos, games and other files.

These P2P programs include, but are not limited to, BitTorrent, Limewire, Gnutella, Vuze, Ares and Ants. Marywood University blocks the use of peer-to-peer applications on all network segments. The use of these applications can expose considerable vulnerabilities. P2P networks have been used to distribute viruses, malware and corrupted or mislabeled files, a threat that can severely impact university operations and online academic research. Malware exposure is a primary staging platform for identity and electronic financial theft.

Marywood University expects that all computers and networks on the campus will be used in a manner consistent with the Conditions of Computer Use Policy and compliant with applicable law. Marywood University is under no obligation to protect a user from a complaint or action arising from violation, or alleged violation, of the law. Users should understand that the fact that material is available for free on the Internet does not mean that accessing such material is authorized by third party rights-holders.

Marywood University prohibits the download and distribution of any copyrighted material, such as music, video, photos and software. Disproportionate bandwidth usage and copyright infringement are violations of the University's Conditions of Computer Use Policy.

Some Legal Alternatives for Downloading: AOL Music, ESPN360, Hulu Movies & TV, iTunes Movies, Music & TV, MTV Video, MySpace Music, Netflix Movies & TV, Pandora, VH1 Videos, Xbox Live Marketplace.

V. ACCREDITATIONS

Marywood University Accreditations/Approvals

Regional

Marywood University is accredited by the **Middle States Commission on Higher Education**,
3524 Market Street, Philadelphia, PA 19104
Phone: 267-284-5000

The Commission on Higher Education is the unit of the Middle States Association of Colleges and Schools that accredits degree-granting colleges and universities in the Middle States region, which includes Delaware, the District of Columbia, Maryland, New Jersey, New York, Pennsylvania, Puerto Rico, the U.S. Virgin Islands, and several locations abroad.

Professional

Business and Managerial Science Programs granting the B.B.A. Degrees at the Undergraduate Level and the M.B.A. and M.S. in Management Information System Degrees at the Graduate Level

Accreditation Council for Business Schools and Programs,
7007 College Boulevard, Suite 420, Overland Park, KS 66211
Phone: 913-339-9356

The Nursing Program granting the B.S.N.

Accreditation Commission for Education in Nursing
3343 Peachtree Road NE, Suite 850, Atlanta, GA 30326
Phone: 404-975-5000

The Didactic Program, Coordinated Program, and Internship and Distance Internship Programs in the Nutrition and Dietetics Department

Accreditation Council for Education in Nutrition and Dietetics,
120 South Riverside Plaza, Suite 2000, Chicago, IL 60606
Phone: 312-899-0040

The Master's Degree in Physician Assistant Studies

Accreditation Review Committee on Education for the Physician Assistant, Inc.,
12000 Findley Road, Suite 240, Duluth, GA 30097
Phone: 770-476-1224

The Graduate Art Therapy Program of the Department of Art
American Art Therapy Association, Inc.,
5999 Stevenson Ave., Alexandria, VA 22304
Phone: 888-290-0878 or 1-703-212-2238

The Undergraduate Music Therapy Program
American Music Therapy Association, Inc.
8455 Colesville Road, Suite 1000, Silver Spring, MD 20910
Phone: 301-589-3300

The Doctor of Psychology (Psy.D.) program in Clinical Psychology is accredited as a doctoral program in clinical psychology by the **American Psychological Association (APA)**,
Office of Program Consultation and Accreditation,
750 First Street, NE, Washington, DC 20002-4242
Phone: 202-336-5500

The Athletic Training Program in the Health and Physical Education Department
Commission on Accreditation of Athletic Training Education,
2201 Double Creek Drive, Suite 5006, Round Rock, TX 78664
Phone: 512-733-9700

The Nursing Program granting the B.S.N.

Commission on Collegiate Nursing Education,
One Dupont Circle, NW, Suite 530, Washington, D.C. 20036
Phone: 202-887-6791

Counseling Programs in Elementary Counseling, Secondary School Counseling and Mental Health Counseling
Council for Accreditation of Counseling and Related Educational Programs,
5999 Stevenson Avenue, Alexandria, VA 22304
Phone: 703-823-9800 ext. 301

The Masters Program in Speech-Language Pathology
Council on Academic Accreditation, American Speech-Language-Hearing Association,
10801 Rockville Pike, Rockville, MD 20852
Phone: 800-498-2071

The Masters and Baccalaureate of Social Work degree programs in the School of Social Work and Administrative Studies
Council on Social Work Education,
1725 Duke Street, Suite 500, Alexandria, VA 22314
Phone: 703-683-8080

Programs in Art and Design of the Department of Art
National Association of Schools of Art and Design,
11250 Roger Bacon Drive, Suite 21, Reston, VA 20190
Phone: 703-437-0700

Programs in Music
National Association of Schools of Music,
11250 Roger Bacon Drive, Suite 21, Reston, VA 20190
Phone: 703-437-0700

Programs for the preparation of elementary, secondary, K-12 and special education teachers and for the preparation of other school personnel including school psychologists, guidance counselors, principals, superintendents, librarians, reading specialists, speech and language pathologists, home school visitors, and supervisory personnel
National Council for Accreditation of Teacher Education
2010 Massachusetts Ave NW, Suite 500, Washington, DC 20036
Phone: 202-466-7496

VI. STRATEGIC PLAN GOALS AND OBJECTIVES

Marywood University

STRATEGIC PLAN GOALS AND OBJECTIVES 2010 - 2015

- GOAL 1: Create both academic and physical infrastructure to provide a learning environment that enables students to succeed academically and professionally.**
- Objective A:** *Enhance the quality of the Marywood educational experience.*
 - Objective B:** *Enhance and promote Marywood University's academic reputation.*
 - Objective C:** *Continue to expand research opportunities for faculty and students.*
 - Objective D:** *Improve physical environment for delivering instruction, conducting research, and accommodating alternative learning styles.*
- GOAL 2: Create a culturally diverse and global educational experience to educate students to live responsibly in a diverse and interdependent world.**
- Objective A:** *Increase the number of culturally diverse students, faculty, and staff.*
 - Objective B:** *Enhance curriculum to reflect the current global perspective.*
 - Objective C:** *Develop more sensitive and positive attitudes and behaviors toward cultural diversity by faculty, staff and students including attention to providing a welcoming and supportive campus.*
 - Objective D:** *Increase opportunities for study abroad and other cultural exchange experiences for students and faculty.*
- GOAL 3: Align resources to achieve institutional goals, with a focus on environmental stewardship.**
- Objective A:** *Improve information services and access for students, faculty, staff, and external audiences.*
 - Objective B:** *Improve financial position through revenue enhancement activity.*
 - Objective C:** *Improve the quality and efficiency of infrastructure.*
 - Objective D:** *Align human resource initiatives to institutional goals.*
 - Objective E:** *Create a campus-wide initiative to implement Sustainable Design Practices in all building and campus maintenance and operations, building renovations, and new construction.*